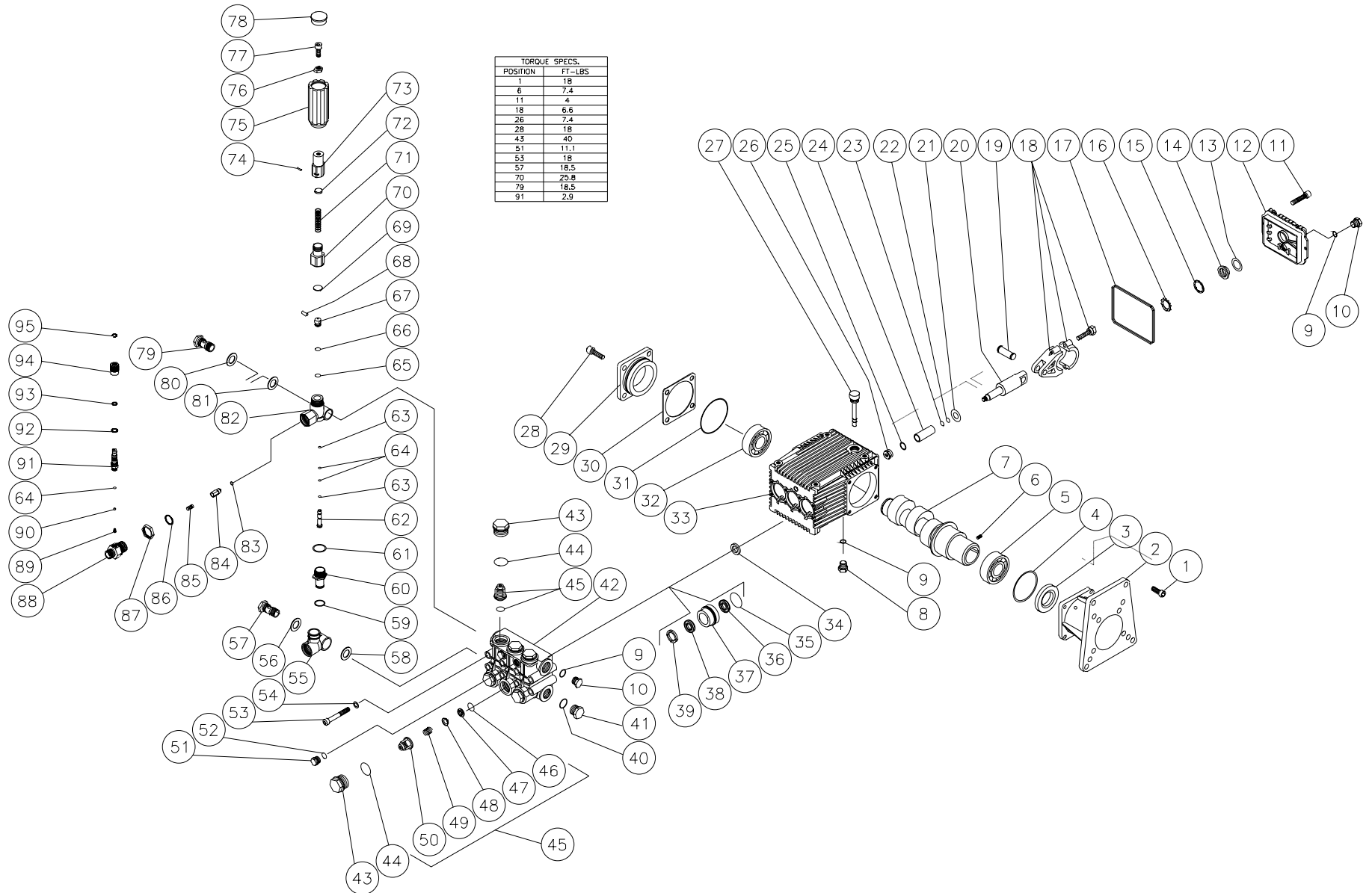


# PUMP ASSEMBLY (3-0188)



3-0188-011999-RD

PUMP ASSEMBLY (3-0188)											
REF. #	DESCRIPTION	PART #	QTY.	REF. #	DESCRIPTION	PART #	QTY.	REF. #	DESCRIPTION	PART #	QTY.
1	Bolt	27-8432	4	35	O-ring	25-0384	3	70	Guide Spring	8-0474	1
2	Flange	46-0714	1	36	Low Pressure Seal (See 70-0177)	N/A Sep.	3	71	Spring	49-0132	1
3	Oil Seal	26-0194	1	37	Packing Retainer	46-0708	3	72	Spring Button	8-0475	1
4	O-Ring	25-0397	1	38	V-Packing (See 70-0177)	N/A Sep.	3	73	Adjustment	8-0476	1
5	Roller Bearing	48-0062	1	39	Support Ring (See 70-0178)	N/A Sep.	3	74	Pin	8-0477	1
6	Set Screw	27-8886	1	40	O-ring	25-0372	1	75	Unloader Knob	7-0141	1
7	Crankshaft	46-0734	1	41	Plug	39-0088	1	76	Nut	30-3025	1
8	Plug	39-0102	1	42	Manifold	46-0711	1	77	Bolt	27-8433	1
9	O-ring	25-0325	3	43	Valve Cap	39-0095	6	78	Cap	7-0142	1
10	Plug	39-0086	2	44	O-ring	25-0160	6	79	Adapter	8-0448	1
11	Bolt	27-8885	6	45	Single Valve Assembly (Inc. 46-50) (See 70-0179)	N/A Sep.	6	80	Washer	8-0449	1
12	Crankshaft Cover	46-0719	1	46	O-ring	25-0386	6	81	Washer	8-0450	1
13	O-ring	25-0370	1	47	Valve Seat (See 70-0179)	N/A Sep.	6	82	Unloader Body	8-0451	1
14	Oil Sight Glass	46-0670	1	48	Valve Plate (See 70-0179)	N/A Sep.	6	83	O-ring	25-0437	1
15	Reflector	46-0824	1	49	Valve Spring (See 70-0179)	N/A Sep.	6	84	Check Valve	8-0454	1
16	Retainer	46-0671	1	50	Valve Cage (See 70-0179)	N/A Sep.	6	85	Spring	49-0123	1
17	O-ring	25-0398	1	51	Plug	39-0096	2	86	O-ring	25-0372	1
18	Connecting Rod	46-0697	3	52	O-ring	25-0387	2	87	Nut	8-0497	1
19	Piston Pin	46-0698	3	53	Head Bolt	27-8440	8	88	Injector Adapter	8-0498	1
20	Plunger Rod	46-0699	3	54	Lockwasher	29-0154	8	89	Detergent Injector Spring (See 70-0232)	N/A Sep.	1
21	Washer	46-0700	3	55	Inlet Bypass Adapter	8-0437	1	90	Ball (See 70-0232)	N/A Sep.	1
22	Back-up Ring	25-0404	3	56	Washer	8-0440	1	91	Barb	8-0499	1
23	O-ring	25-0382	3	57	Adapter	8-0438	1	92	O-ring (See 70-0232)	N/A Sep.	1
24	Piston	46-0701	3	58	Washer	8-0439	1	93	O-ring (See 70-0232)	N/A Sep.	1
25	Washer	26-0191	3	59	O-ring (See 70-0180)	N/A Sep.	1	94	Adjustable Detergent Knob	7-0152	1
26	Nut	30-6020	3	60	Nipple	8-0441	1	95	Snap Ring (See 70-0232)	N/A Sep.	1
27	Oil Dipstick	39-0090	1	61	O-ring (See 70-0180)	N/A Sep.	1		High Pressure Seals (Includes 3 each 35, 36, 38)	70-0177	
28	Bolt	27-8884	4	62	Piston	8-0442	1		Support Rings (Includes 3 each 39)	70-0178	
29	Bearing Cap	46-0703	1	63	Back-up Ring (See 70-0180)	N/A Sep.	2		Valves (Includes 6 each 46-50)	70-0179	
30	Shim- 0.1mm (Qty. Varies 1-3)	46-0704	-	64	O-ring	25-0371	3		Unloader (Includes 55-85)	8-0456	
-	Shim- 0.2mm (Qty. Varies 1-3)	46-0705	-	65	O-ring (See 70-0180)	N/A Sep.	1		Unloader Repair (Includes 59, 61, 63-66, 83)	70-0180	
31	O-ring	25-0380	1	66	Back-up Ring (See 70-0180)	N/A Sep.	1		Injector (Includes 64, 86-95)	70-0232	
32	Bearing	48-0061	1	67	Poppet	8-0443	1		Injector Repair (Includes 64, 86, 89, 90, 92, 93, 95)	70-0233	
33	Crankshaft	46-0811	1	68	Pin	8-0444	1				
34	Oil Seal	26-0190	3	69	Spring Button	8-0445	1				