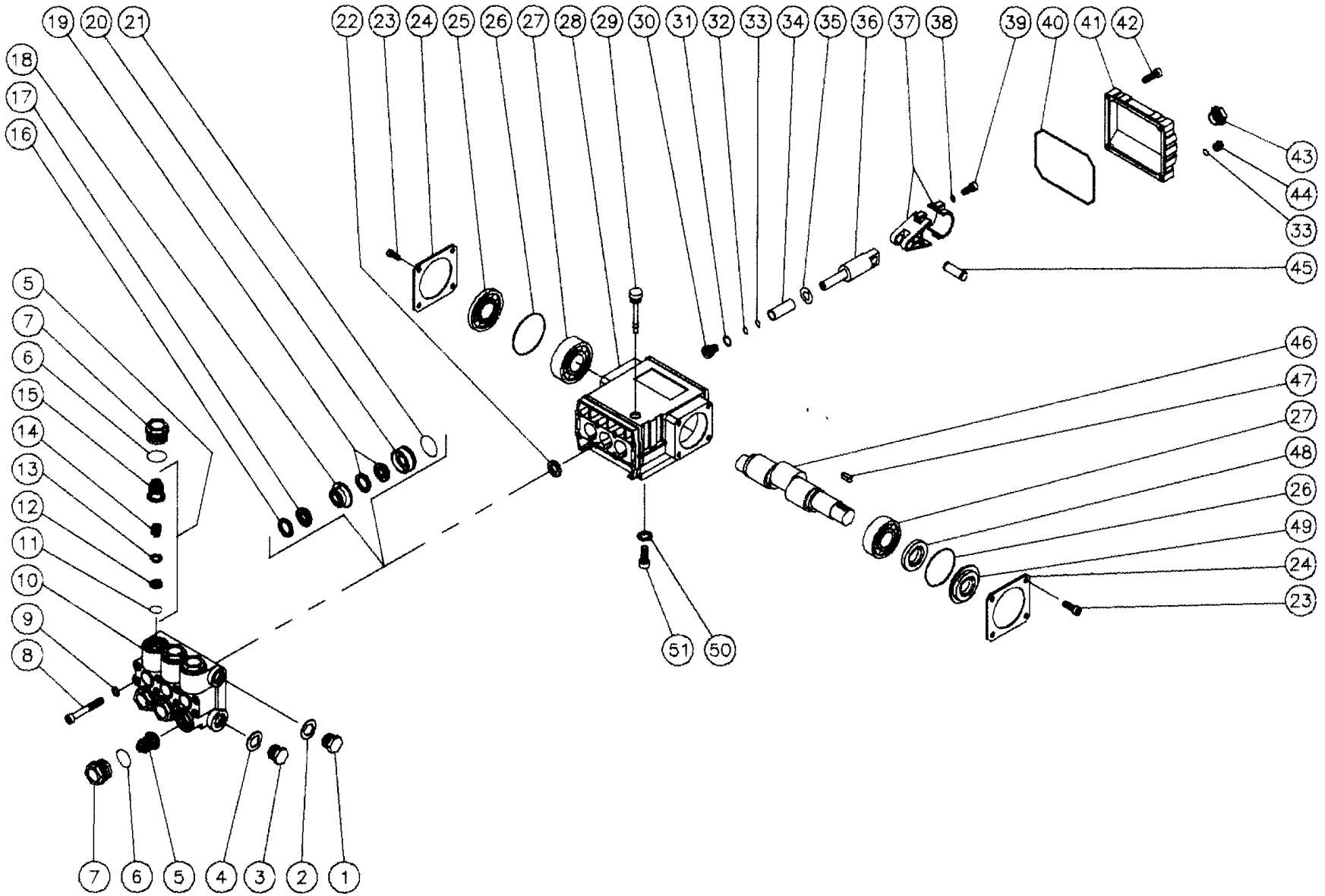


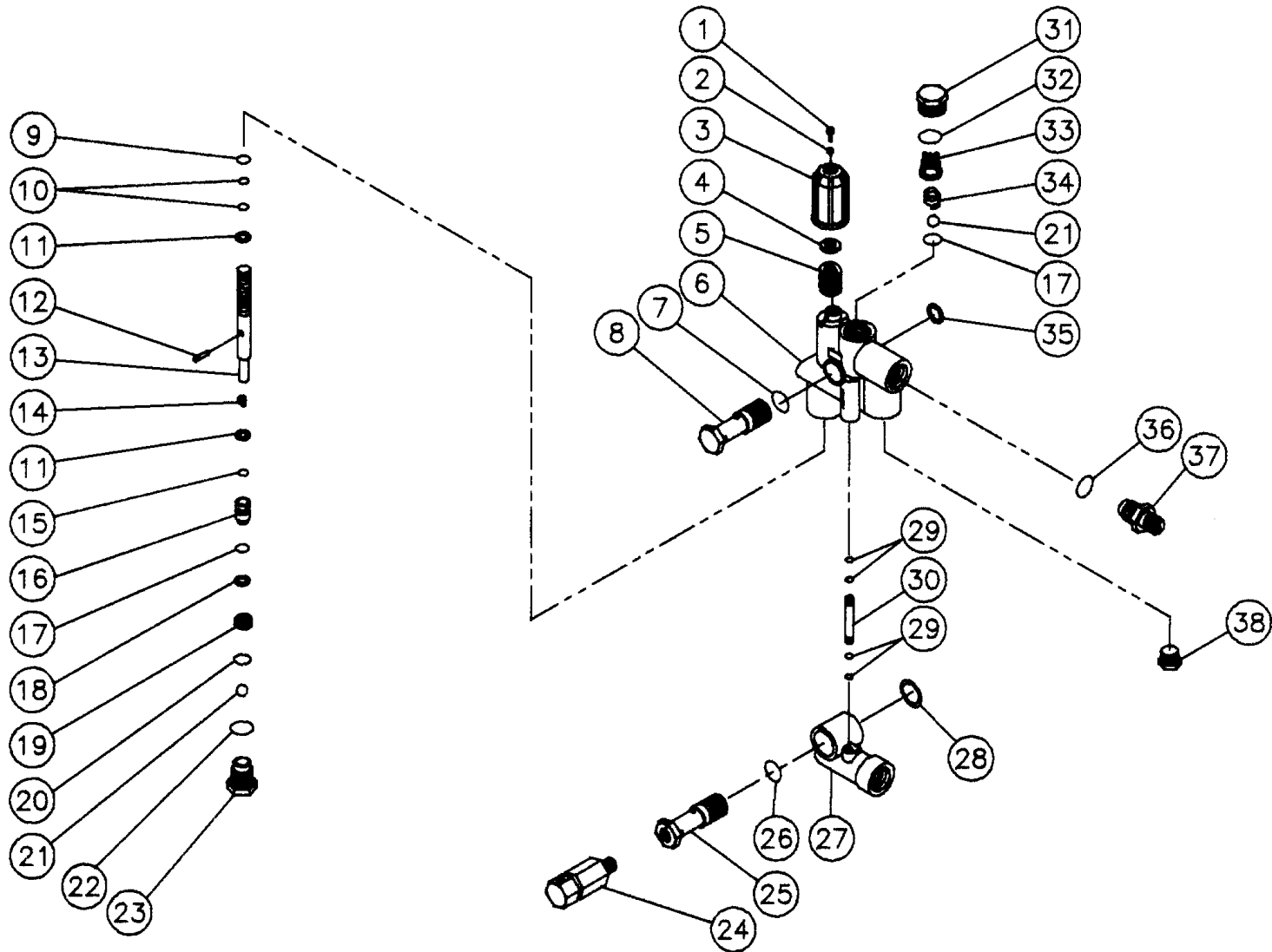
# PUMP ASSEMBLY (3-0080)



OMPMP019 / 122195JTR

PUMP ASSEMBLY (3-0080)								
REF #	DESCRIPTION	PART #	QTY		REF #	DESCRIPTION	PART #	QTY
1	Plug	39-0018	1		28	Crankcase	46-0075	1
2	Washer	28-0600	1		29	Oil Dip Stick	46-0143	1
3	Plug	39-0019	1		30	Piston Screw	46-0069	3
4	Washer	28-0601	1		31	Washer	28-0400	3
5	Valve Assembly (11-15) (See kit 70-0009)	N/A Sep.	6		32	Ceramic Plunger	46-0078	3
6	O-ring	25-0012	6		33	O-ring	25-0014	4
7	Valve Plug	39-0020	6		34	Back Up Ring	46-0109	3
8	Bolt	27-8439	8		35	Flinger Washer	46-0146	3
9	Lockwasher	29-0154	8		36	Piston Rod	46-0080	3
10	Pump Manifold	46-0083	1		37	Connecting Rod	46-0231	3
11	O-ring (See kit 70-0009)	N/A Sep.	6		38	Washer	28-0201	6
12	Valve Seat (See kit 70-0009)	N/A Sep.	6		39	Bolt	27-8405	6
13	Valve Plate (See kit 70-0009)	N/A Sep.	6		40	Cover Gasket	26-0081	1
14	Valve Spring (See kit 70-0009)	N/A Sep.	6		41	Crankcase Cover	46-0085	1
15	Valve Cage (See kit 70-0009)	N/A Sep.	6		42	Bolt	27-8401	5
16	Head Ring (See kit 852-0012)	N/A Sep.	6		43	Oil Level Indicator	46-0114	1
17	V-packing (See kit 852-0012)	N/A Sep.	6		44	Plug	39-0017	1
18	Intermediate Ring	46-0089	3		45	Connecting Rod Pin	43-0031	3
19	Low Pressure Seal (See 852-0012)	N/A	3		46	Crankshaft	46-0230	1
20	Low Pressure Seal Retainer	46-0081	3		47	Key	43-0028	1
21	O-ring	25-0048	3		48	Oil Seal	26-0048	1
22	Oil Seal	26-0046	3		49	Spacer - Bearing	46-0087	1
23	Bolt	27-8000	8		50	Lockwasher	46-0605	4
24	Oil Retainer	46-0084	2		51	Bolt	46-0606	4
25	Spacer	46-0088	1			Valve Kit (Includes 6 each of 5 OR 11-15)	70-0009	6
26	O-ring	25-0060	2			Packing Kit (Includes 16, 17, 20)	852-0012	6
27	Bearing	48-0011	2					

# UNLOADER ASSEMBLY (8-0316)



OMGEN195 / 022795BAR

**UNLOADER ASSEMBLY (8-0316)**

REF. #	DESCRIPTION	PART #	QTY.	REF. #	DESCRIPTION	PART #	QTY.
1	Screw	27-8409	1	21	Ball	8-0201	2
2	Nut	30-3024	1	22	O-ring	25-0160	1
3	Pressure Regulating Knob	7-0050	1	23	Cap-Brass	39-0039	1
4	Spring Guide	8-0332	1	24	Thermo Valve	22-0148	1
5	Spring	49-0047	1	25	Fixing Screw	8-0333	1
6	Valve Body	8-0218	1	26	O-ring	25-0053	1
7	O-ring	25-0231	1	27	Inlet Body-Aluminum	46-0242	1
8	Fixing Screw	8-0224	1	28	Washer-Aluminum	28-0601	1
9	Back-up Ring	25-0137	1	29	O-ring	25-0161	4
10	O-ring	25-0138	2	30	By-pass Tube-Brass	8-0223	1
11	Washer	28-0209	2	31	Cap-Brass	39-0040	1
12	Pin	43-0051	1	32	O-ring	25-0136	1
13	Piston Guide	8-0219	1	33	Valve Guide	8-0225	1
14	Spring	49-0049	1	34	Spring	49-0046	1
15	O-ring	25-0163	1	35	Washer	28-0600	1
16	Drive Piston	8-0220	1	36	O-ring	25-0051	1
17	O-ring	25-0050	2	37	Nipple-Brass	8-0130	1
18	Back-up Ring	8-0284	1	38	Cap-Brass	39-0042	1
19	Valve Seat	8-0221	1		Unloader Repair Kit (Inc. 5, 7, 9, 10, 14, 15, 17-22, 25, 28, 31-33)	70-0020	1
20	O-ring	25-0159	1				