

YVB75KTPF21

Pressure Trapping Unloader w/Fixed Injector



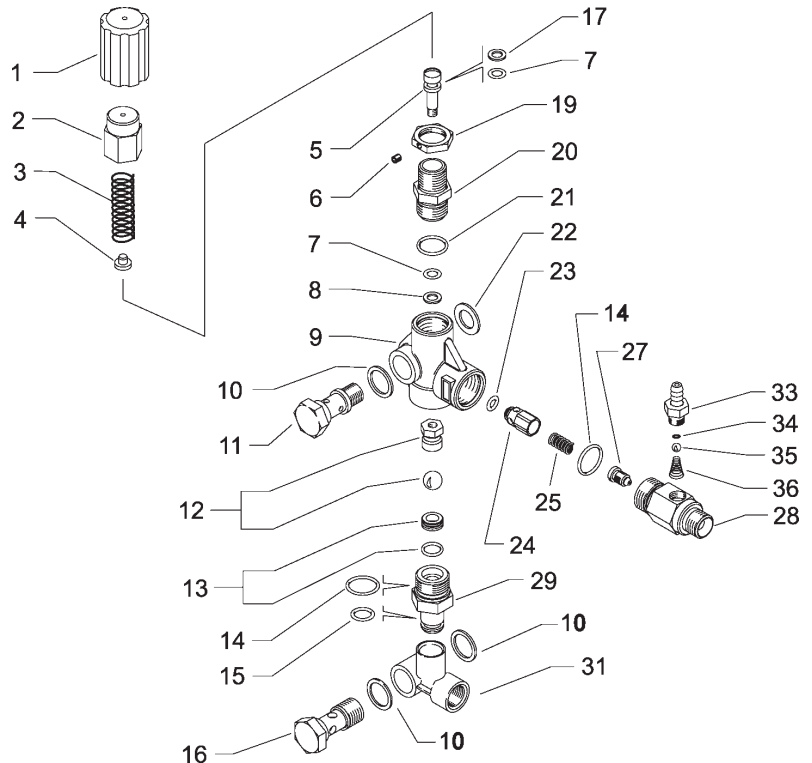
SPECIFICATIONS

| | | |
|---------------------|---|-------------|
| Part Number | YVB75KTPF21 | |
| Operating Pressure | 3200 PSI | |
| Maximum Pressure | 3650 PSI | |
| Maximum Flow | 8.0 GPM | |
| Maximum Temperature | 195°F | |
| Port Size: | Inlet | 3/8" BSPP-F |
| | Discharge | 3/8" BSPP-M |
| Banjo Size: | Inlet | 3/8" BSPP-M |
| | Discharge | 1/4" BSPP-M |
| Dimensions | 3.8" x 1.8" x 5.7" | |
| Weight | 1.89 lb. | |
| Material | Brass, Stainless Steel, Plastic, Buna-N | |

General Pump recommends using a safety relief device in conjunction with this unloader valve when installed on a positive displacement pump. General Pump assumes no responsibility for this valve when used in a customer's high pressure system.

PARTS LIST

| No. | Part No. | Kit Description | Qty. |
|---|-------------|-------------------------------|------|
| KIT YKITVB7 * Unloader Repair Kit (Valve Only) 1 | | | |
| 1. | Y60031584 | Plastic knob | 1 |
| 2. | Y60030431 | Brass cap | 1 |
| 3. | Y60031361 | White spring | 1 |
| 4. | Y60031061 | Spring seat. zincplated | 1 |
| 5. | Y60070451 | S.S. piston | 1 |
| 6. | Y16210000 | Grub screw M4x4 | 1 |
| 7. | Y10316900 * | O-ring 2.62 x 6.02 mm | 2 |
| 8. | Y10402400 * | Backup ring 11.6 x 7 mm | 1 |
| 9. | Y60078435 | Brass valve body | 1 |
| 10. | Y14410000 | Washer 3/8 Bsp rubber + steel | 3 |
| 11. | Y60095331 | Hollow screw 1/4 Bsp-brass | 1 |
| 12. | Y60170821 * | S.S. shutter M6 | 1 |
| 13. | Y60025920 * | Seat assy | 1 |
| 14. | Y10307002 * | O-ring 1.78 x 18.77 mm | 2 |
| 15. | Y10310996 | O-ring 2.4 x 10.3 viton | 1 |
| 16. | Y60095231 | Hollow screw 3/8 Bsp-brass | 1 |
| 17. | Y10402300 * | Backup ring 11 x 64 mm | 1 |
| 19. | Y60101831 | Lock nut M18x1 | 1 |
| 20. | Y60070831 | Piston housing | 1 |
| 21. | Y10306801 * | O-ring 1.78 x 17.17 mm | 1 |
| 22. | Y14381322 | Alum washer 13.2x22x1.5mm | 1 |
| 23. | Y10321300 * | O-ring 3 x 6 mm | 1 |
| 24. | Y60005231 | Hex check valve | 1 |
| 25. | Y60005351 | S.S. spring | 1 |
| 27. | Y21021351 | Injector orifice 2.1mm | 1 |
| 28. | Y21026131 | Injector body 3/8M Bsp | 1 |
| 29. | Y60078231 | Seat holder L=16mm | 1 |
| 31. | Y60095135 | Manifold | 1 |
| 33. | Y21000331 | Fixed hose barb | 1 |
| 34. | Y10304900 | O-ring 1.78 x 5.28 mm | 1 |
| 35. | Y14742001 | 7/32" ball | 1 |
| 36. | Y21016051 | Conical spring | 1 |



YVB75KTPF21

Pressure Trapping Unloader w/Fixed Injector

APPLICATION

This product is to be used with clean, fresh water. For different or corrosive liquids, contact GP Companies Inc. technical support department. With not-clean liquids, appropriate filtration should be installed.

Select the valve based on the nominal operating rating: system rated pressure, max flow and max temperature.

Under no circumstances should the pressure of the system exceed the **maximum** rated pressure of any component.

When installed on hot water cleaners, this valve is to be installed before the boiler.

INSTALLATION

On a system that produces hot water, consider installing safety devices which limit the accidental increase of the fluid temperature. Always install a safety valve to protect the operator and system.

Choose a correct nozzle size, able to discharge regularly, on bypass, at least 5% of the total flow of the system, in order to achieve a constant pressure, and avoid troublesome pressure spikes.

When the nozzle wears, the pressure drops. After installing a new nozzle, re-adjust the system to the original pressure setting.

PROBLEMS & SOLUTIONS

| PROBLEMS | PROBABLE CAUSES | SOLUTIONS |
|--|---|---|
| Unloader cycles | Damaged check valve o-ring Fitting leaking Restricted bypass | Replace Check and repair Clean or adapt |
| Unloader does not come up to pressure | Unloader not properly sized Piston o-ring worn out Foreign materials among seat and shutter Nozzle worn out. | Select a new unloader Replace Clean the seat Replace |
| Pressure spikes | Spring totally compressed Excessive flow in bypass There is not a min. 5% of total flow in bypass | Loosen unloader adjustment Change unloader Change size of nozzle Adjust unloader and/or replace nozzle |
| Unloader does not bypass at low pressure | Check valve jammed Check valve o-ring worn out Foreign materials on check valve | Clean or replace Replace Clean |

DIMENSIONAL DRAWING

