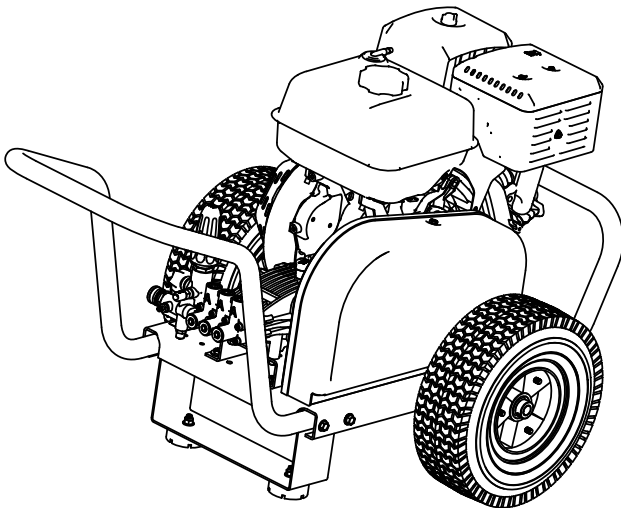


ITEM	PART NO	DESCRIPTION	QTY.
1	7103380	FRAME ASSY., 21 x 15.25 (BLACK)	1
2	7106191	KIT, WHEEL, POWER WASHER WHEEL & COLLAR	2
3	7108796	FOOT ASSEMBLY KIT, WATERBLASTER SERIES FLAT BLACK	1
4	7108893	WB3200 REAR HANDLE SRV ASSY	1
5	7108892	WB3200 FRONTHANDLE SRV ASSY	1
6	100562	ENGINE, SHINERAY 420CC HRZ BLACK RECOIL	1
7	7105453	KEY, SHAFT 1/4" X 1/4" X 1-1/2"	1
8	7103594	ENGINE MOUNT HARDWARE KIT	1
9	7109237	PUMP, SERVICE ASSEMBLY, 530007 C-45 BELTDRIVE	1
9.1	530007	PUMP, 4200PSI @ 4.0 GPM, 3400 RPM BELT DRIVE 24MM SHAFT (C45)	1
9.2	7101037	PUMP BUMPER	1
9.3	7104880	BRACKET, COMET PUMP HAT FLAT BLACK (WB)	1
10	7109108	HARDWARE KIT, PUMP	1
11	7103596	ENGINE ADJUSTING BLOCK SVC ASSY KIT	1
12	7109688	PULLY KIT 23 X 500 X SH	1
13	7109113	BELT GUARD SVC ASSY, WB3200	1
13.1	7108529	BELTGUARD, 18" REAR STEEL PAINTED SILVER	2
13.2	7108528	BELTGUARD, 18" FRONT FORMED STEEL PAINTED SILVER	1
14	7103599	BELT GUARD TENSIONER KIT	1
15	7101683	NOZZLE SET, 4.0 5PC 1/4" QC-M	1
16	7100389	GROMMET, 7/16" ID	6
17	7100551	LANCE, 48" INSULATED	1
18	7108134	GUN,5075PSI 12GPM 3/8NPTF IN 1/4NPTF	1
19	7103774	Hose 3/8 X 50 X 4500 MH SWL RIG 2PC QC	1
20	7107109	KIT, SOAP HOSE & FILTER	1
* 21	7102389	MANUAL, OWNERS, WATER BLASTER SERIES	1
* 22	7102045	TOOL, NOZZLE CLEANING, UNIVERSAL	1



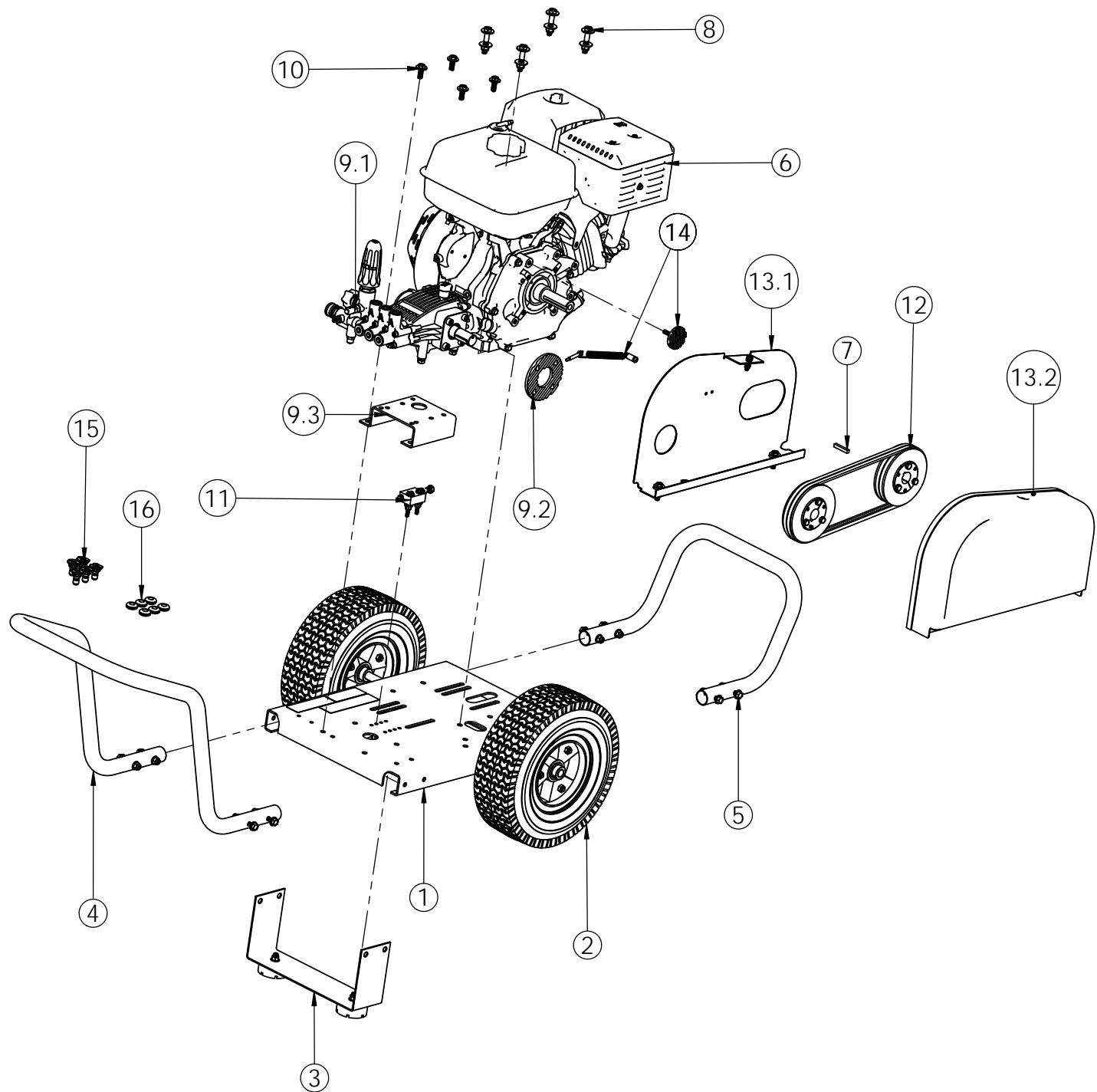
\* NOT SHOWN  
† NOT SOLD SEPERATELY

	NAME	DATE
DRAWN	HB	3/7/16
CHECKED	DH	March 2017
ENG APPR.	SW	March 2017
MFG APPR.	-	-
Q.A. APPR.	CG	March 2017
SERVICE APPR.	DH	March 2017

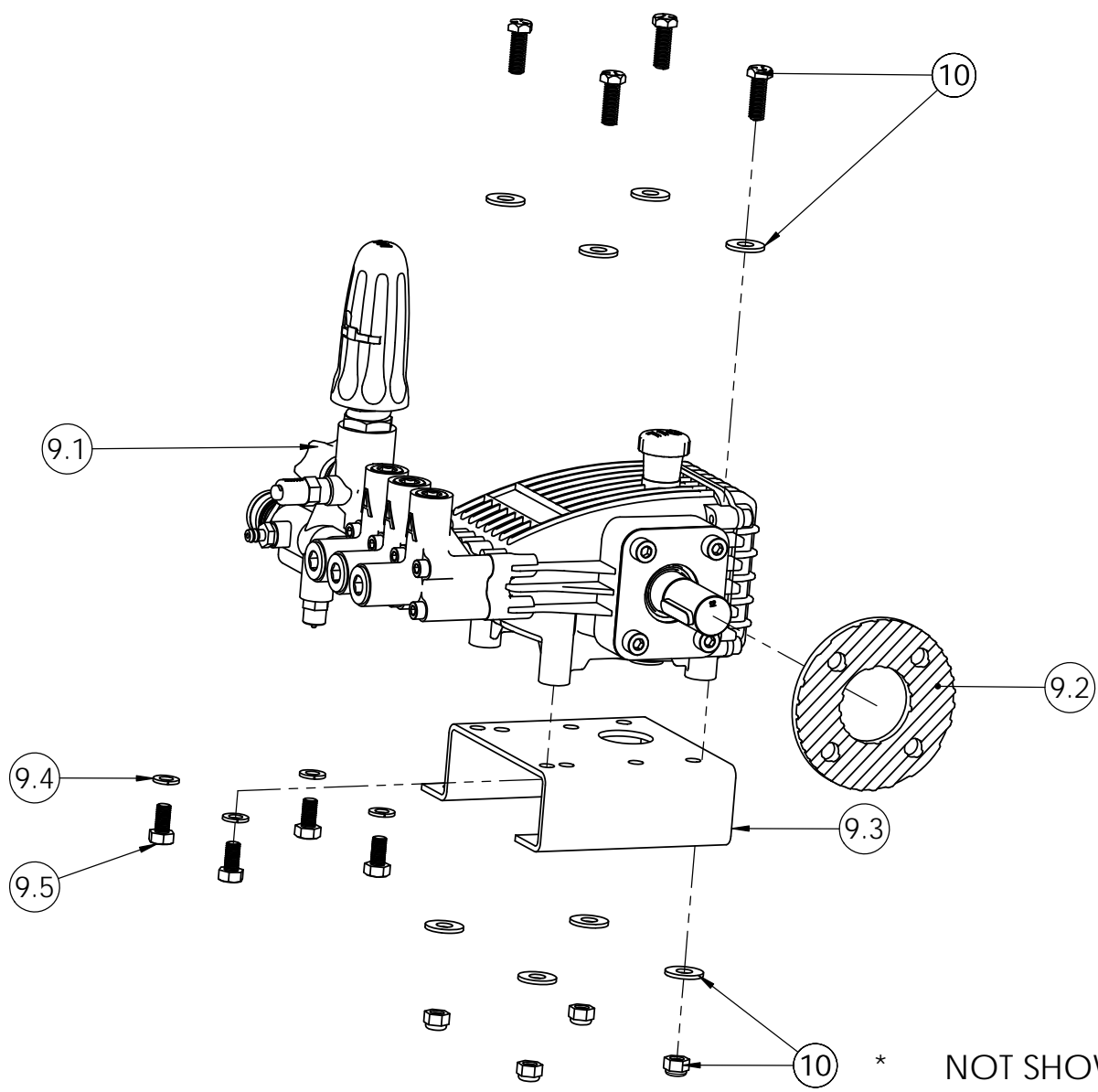
**PROPRIETARY AND CONFIDENTIAL**  
THE INFORMATION CONTAINED IN THIS DRAWING IS THE SOLE PROPERTY OF FNA-GROUP. ANY REPRODUCTION IN PART OR AS A WHOLE WITHOUT THE WRITTEN PERMISSION OF FNA-GROUP IS PROHIBITED.

**FNA-GROUP**  
 1265 INDUSTRIAL STREET, DECATUR, AR 72722  
 TITLE:  
**60824 WB4400@ 4.0 SHINERAY**

SIZE	DWG. NO.	REV.
<b>A</b>	<b>60824</b>	<b>A</b>
SCALE: 1:12	ECN#: DC17-0091	SHEET 1 OF 4



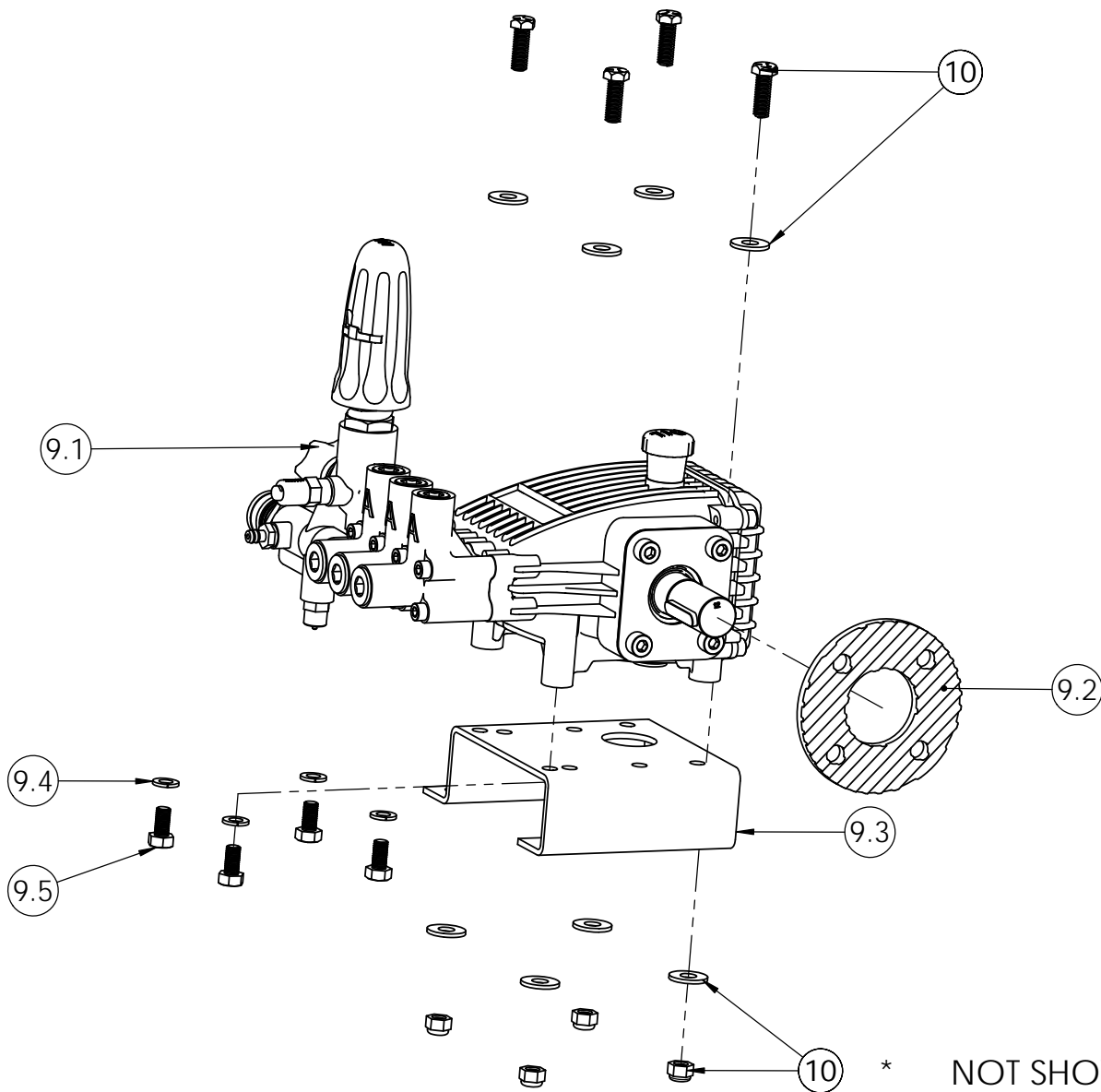
ITEM	PART NO	DESCRIPTION	QTY.
9	7109237	PUMP, SERVICE ASSEMBLY, 530007 C-45 BELTDRIVE	1
9.1	530007	PUMP, 4200PSI @ 4.0 GPM, 3400 RPM BELT DRIVE 24MM SHAFT (C45)	1
9.2	7101037	PUMP BUMPER	1
9.3	7104880	BRACKET, COMET PUMP HAT FLAT BLACK (WB)	1
† 9.4		WASHER, SPLIT-LOCK 5/16" RUST RESISTANT	4
† 9.5		BOLT, M8-1.25 X 16 HHCS ZINC PLATED	4
10	7109108	HARDWARE KIT, PUMP	1



\* NOT SHOWN  
† NOT SOLD SEPERATELY

SIZE	DWG. NO.	REV.
<b>A</b>	60824	<b>A</b>
SCALE: 1:4	ECN#: DC17-0091	SHEET 3 OF 4

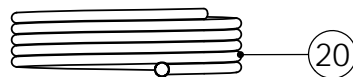
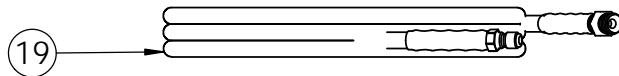
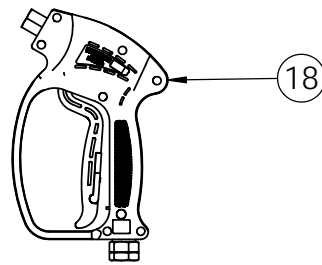
ITEM	PART NO	DESCRIPTION	QTY.
9	7109237	PUMP, SERVICE ASSEMBLY, 530007 C-45 BELTDRIVE	1
9.1	530007	PUMP, 4200PSI @ 4.0 GPM, 3400 RPM BELT DRIVE 24MM SHAFT (C45)	1
9.2	7101037	PUMP BUMPER	1
9.3	7104880	BRACKET, COMET PUMP HAT FLAT BLACK (WB)	1
† 9.4		WASHER, SPLIT-LOCK 5/16" RUST RESISTANT	4
† 9.5		BOLT, M8-1.25 X 16 HHCS ZINC PLATED	4
† 10	7109108	HARDWARE KIT, PUMP	1



\* NOT SHOWN  
† NOT SOLD SEPERATELY

SIZE	DWG. NO.	REV.
<b>A</b>	60824	<b>A</b>
SCALE: 1:4	ECN#: DC17-0091	SHEET 3 OF 4

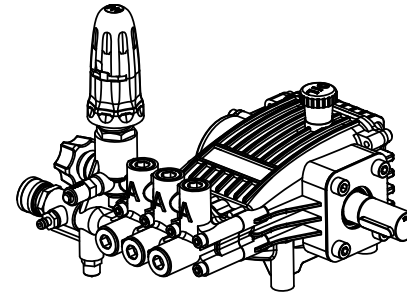
ITEM	PART NO	DESCRIPTION	QTY.
17	7100551	LANCE, 48" INSULATED	1
18	7108134	GUN, 5075PSI 12GPM 3/8NPTF IN 1/4NPTF	1
19	7103774	Hose 3/8 X 50 X 4500 MH SWL RIG 2PC QC	1
20	7107109	KIT, SOAP HOSE & FILTER	1



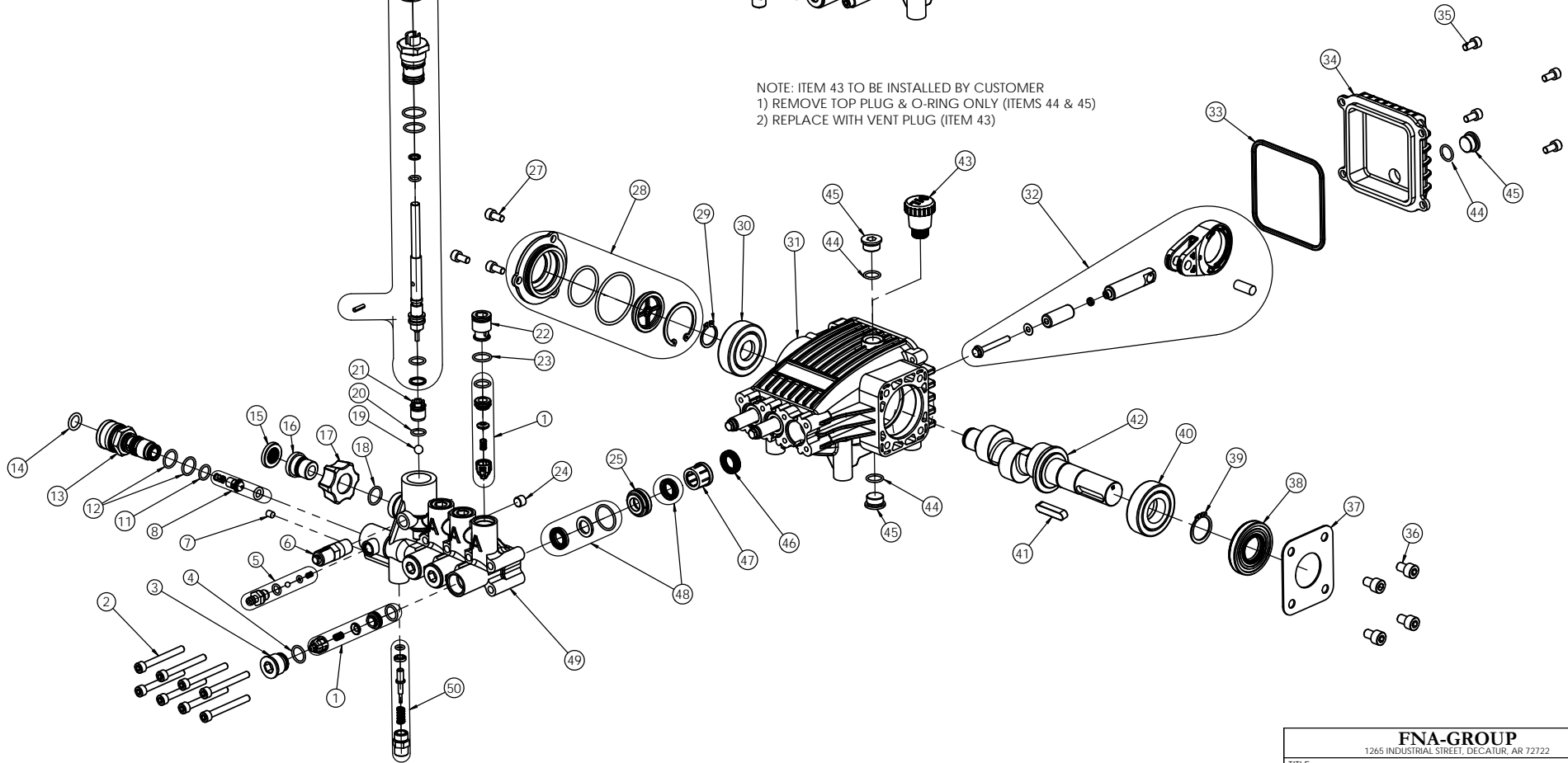
TORQUE SPECIFICATIONS			
ITEM	FT-LB	IN-LB	N-M
2	9	106	12
3	15	177	20
6	13	159	18
7	3	35	4
13	15	177	20
16	15	177	20
22	15	177	20
24	7	80	9
26	15	177	20
27	7	80	9
35	7	80	9
36	19	222	25
50	13	159	18

REV.	DESCRIPTION	REVISIONS		
		ECN#	APPROVED	DATE
A	NEW RELEASE	DC16-0189	D.H.	6/10/16

# 530007 PUMP SERVICE DRAWING



NOTE: ITEM 43 TO BE INSTALLED BY CUSTOMER  
 1) REMOVE TOP PLUG & O-RING ONLY (ITEMS 44 & 45)  
 2) REPLACE WITH VENT PLUG (ITEM 43)

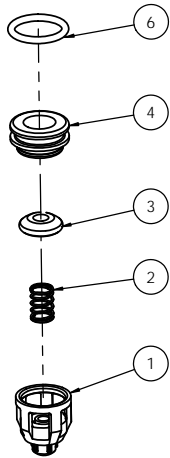


<b>FNA-GROUP</b> 1265 INDUSTRIAL STREET, DECATUR, AR 72722		
TITLE: PUMP, 4200PSI @ 4.0 GPM, 3400 RPM BELT DRIVE 24MM SHAFT (C45)		
SIZE <b>C</b>	DWG. NO. <b>530007</b>	REV <b>A</b>
WEIGHT: 14.352 lbs		SCALE: 1:3
		SHEET 1 OF 6

# 530007 PARTS LIST

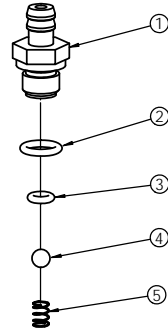
ITEM	PART NO.	DESCRIPTION	QTY
1	7108750	CAGE, VALVE	6
		SPRING, VALVE	
		DISK, VALVE	
		O-RING	
		SEAT, VALVE	
2	7106692	SCREW	8
3	7106693	PLUG	3
4	7106694	O-RING	3
5	7104228	HOSE BARB	1
		O-RING	
		O-RING	
		BALL, SOAP VALVE	
6	7101359	SPRING, SOAP VALVE	1
		VALVE, THERMAL RELIEF	
7	7109053	PLUG	1
8	7109054	O-RING, CHECK VALVE	1
		CORE, NON-RETURN CHECK VALVE	
		SPRING, CHECK VALVE	
11	7106699	O-RING	1
12	7106700	O-RING	2
13	7106701	QUICK CONNECT CONNECTOR, OUTLET	1
14	7106702	O-RING	1
15	7000123	SCREEN, WATER INLET	1
16	7106703	INLET, CONNECTOR	1
17	7105705	NUT, HAND TIGHT	1
18	7106704	O-RING	1
19	7109055	BALL	1
20	7109056	O-RING	2
21	7109057	UNLOADER VALVE SEAT	1
22	7106707	PLUG	3
23	7106700	O-RING	3
24	7106647	PLUG	1
25	7106710	RETAINER	3
26	7109058	UNLOADER CAP	1
		CAP LOCKER	
		NUT M6	
		SCREW	
		UNLOADER NUT	
		SET SCREW	
		UNLOADER SPRING	
		UNLOADER VALVE CAP	
		O-RING, 15X1.8	
		O-RING, 14X1.8	
		BACK UP RING	
		O-RING, 5.6X1.8	
		LOCK PIN	
		STEM ASSY	
O-RING, 9X1.8			
BACK UP RING			

ITEM	PART NO.	DESCRIPTION	QTY
27	7106721	SCREW	3
28	7106709	COVER, SIDE	1
		O-RING	
		O-RING	
		SIGHT GLASS	
29	7106714	RING Ø40, RETAINING	1
		RING Ø20, RETAINING	
30	7109059	BEARING, NUP 304E	1
31	7109086	CRANKCASE	1
32	7109061	BOLT	3
		GASKET	
		PLUNGER, CERAMIC	
		RING	
		PLUNGER, POLE, BASE	
33	7106719	CONNECTING ROD	1
		PIN, CONNECTING ROD	
		O-RING	
34	7109062	CRANKCASE, END COVER	1
35	7106721	SCREW	4
36	7109071	SCREW	4
37	7109072	BAFFLE	1
38	7109073	OIL SEAL	1
39	7109074	RING Ø25, RETAINING	1
40	7109075	BEARING NUP 205E	1
41	7109076	KEY	1
42	7109077	CRANKSHAFT	1
43	7108868	VENT CAP	1
44	7106730	O-RING	3
45	7105721	PLUG	3
46	7106731	OIL SEAL	3
47	7109064	RETAINER, SEAL	3
		SEAL, LOW PRESSURE	
		O-RING	
		RING, ANTI-EXT	
48	7106733	SEAL, HIGH PRESSURE	1
49	7109065	MANIFOLD	1
50	7106628	VALVE CAP, PRESSURE BOOST	1
		SPRING, BOOST VALVE	
		VALVE, PRESSURE BOOST	
		BACK RING	
51	7108989	O-RING	1
		OIL SEAL KIT	
52	7108991	PLUNGER KIT	1
53	7109066	UNLOADER KNOB KIT	1
54	7109067	MANIFOLD KIT	1
55	7109078	CRANKCASE KIT	1



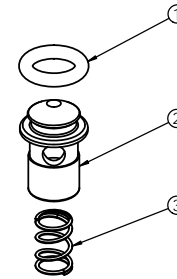
① PART NO. 7108750  
VALVE KIT

ITEM	QTY	DESCRIPTION
1	6	CAGE, VALVE
2	6	SPRING, VALVE
3	6	DISK, VALVE
4	6	SEAT, VALVE
5	6	O-RING



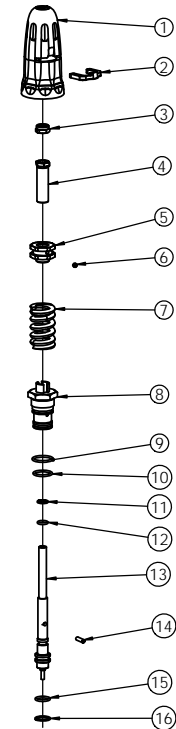
⑤ PART NO. 7104228  
SOAP INJECTOR KIT

ITEM	QTY	DESCRIPTION
1	1	HOSE BARB
2	1	O-RING
3	1	O-RING
4	1	BALL, SOAP VALVE
5	1	SPRING, SOAP VALVE



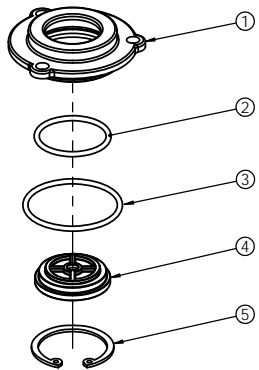
⑧ PART NO. 7109054  
UNLOADER CHECK VALVE KIT

ITEM	QTY	DESCRIPTION
1	1	O-RING, CHECK VALVE
2	1	CORE, CHECK VALVE
3	1	SPRING, CHECK VALVE



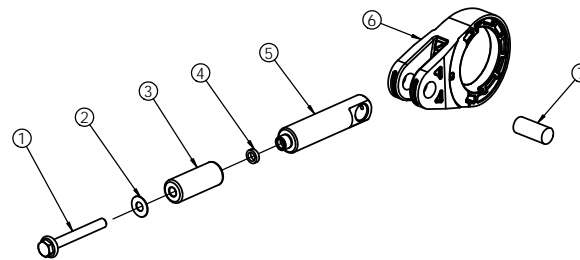
②⑥ PART NO. 7109058  
UNLOADER KIT

ITEM	QTY	DESCRIPTION
1	1	UNLOADER CAP
2	1	CAP LOCKER
3	1	NUT M8
4	1	SCREW
5	1	UNLOADER NUT
6	1	SET SCREW
7	1	UNLOADER SPRING
8	1	UNLOADER VALVE CAP
9	1	O-RING, 19X1.8
10	1	O-RING, 17X1.8
11	1	BACK UP RING
12	1	O-RING, 8X1.8
13	1	STEM ASSY
14	1	LOCK PIN
15	1	O-RING, 12.5X1.8
16	1	BACK UP RING



②⑧ PART NO. 7106709  
CRANKCASE SIGHTGLASS KIT

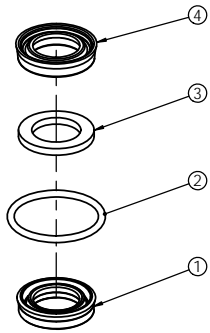
ITEM	QTY	DESCRIPTION
1	1	COVER, SIDE
2	1	O-RING
3	1	O-RING
4	1	SIGHT GLASS
5	1	RING Ø40, RETAINING



③② PART NO. 7109061  
CONNECTING ROD KIT

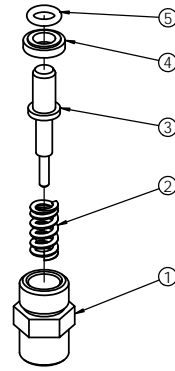
ITEM	QTY	DESCRIPTION
1	3	BOLT
2	3	GASKET
3	3	PLUNGER, CERAMIC
4	3	RING
5	3	PLUNGER, POLE, BASE
6	3	CONNECTING ROD
7	3	PIN, CONNECTING ROD





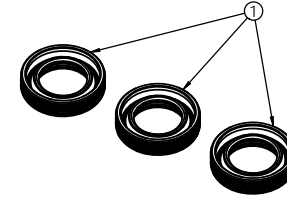
48 PART NO. 7106733  
HIGH AND LOW PRESSURE SEAL KIT

ITEM	QTY	DESCRIPTION
1	3	SEAL, LOW PRESSURE
2	3	O-RING
3	3	RING, ANTI-EXT
4	3	SEAL, HIGH PRESSURE



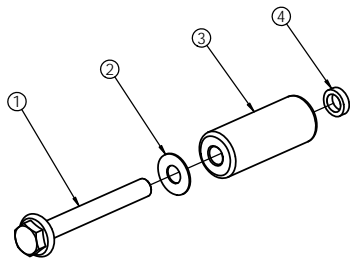
50 PART NO. 7106628  
PRESSURE BOOST VALVE KIT

ITEM	QTY	DESCRIPTION
1	1	VALVE CAP, PRESSURE BOOST
2	1	SPRING, BOOST VALVE
3	1	VALVE, PRESSURE BOOST
4	1	BACK RING
5	1	O-RING



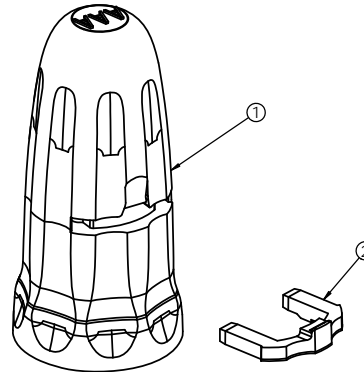
51 PART NO. 7108989  
OIL SEAL KIT

ITEM	QTY	DESCRIPTION
1	3	OIL SEAL



52 PART NO. 7108991  
PLUNGER KIT

ITEM	QTY	DESCRIPTION
1	3	BOLT
2	3	GASKET
3	3	PLUNGER, CERAMIC
4	3	RING

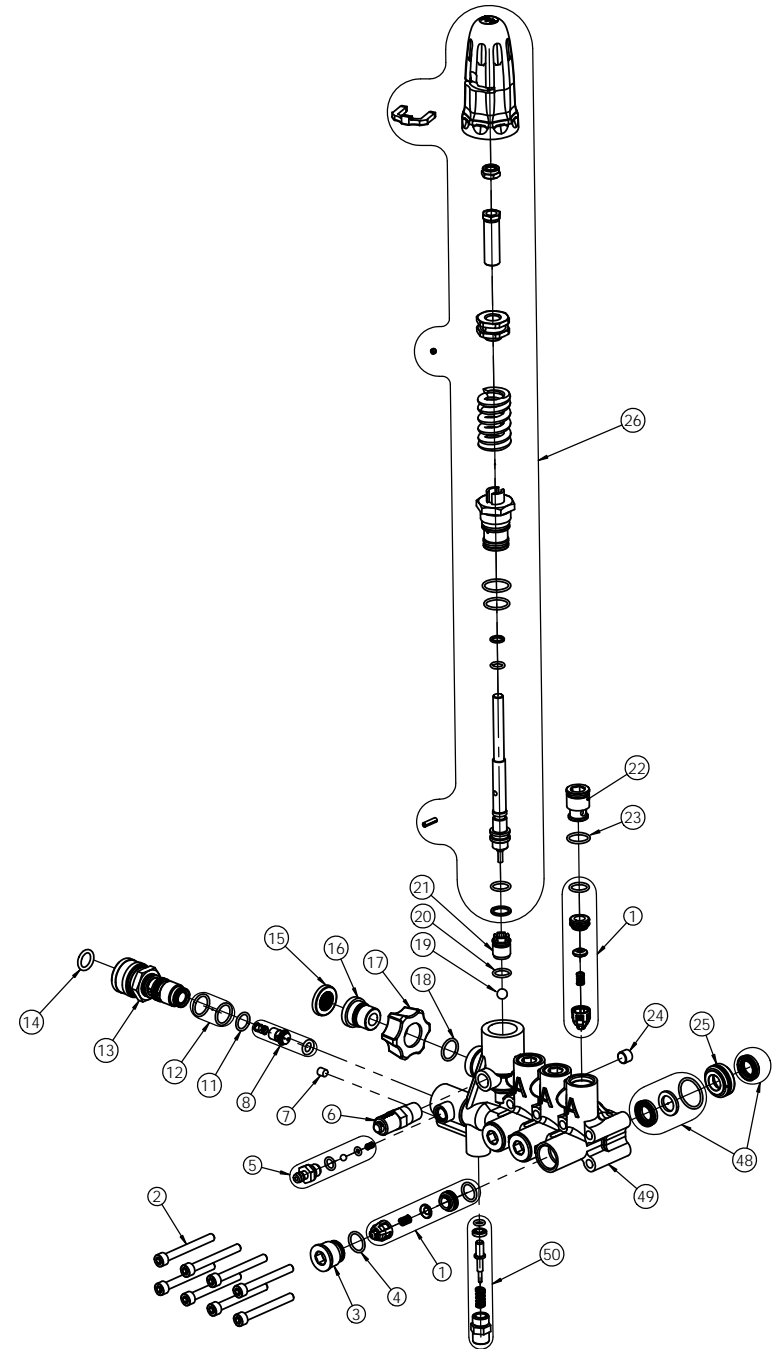


53 PART NO. 7109066  
UNLOADER KNOB KIT

ITEM	QTY	DESCRIPTION
1	1	UNLOADER CAP
2	1	CAP LOCKER

54 PART NO. 7109067  
MANIFOLD KIT

ITEM	QTY	DESCRIPTION		
1	6	CAGE, VALVE		
		SPRING, VALVE		
		DISK, VALVE		
		O-RING		
		SEAT, VALVE		
2	8	SCREW		
3	3	PLUG		
4	3	O-RING		
5	1	HOSE BARB		
		O-RING		
		O-RING		
		BALL, SOAP VALVE		
		SPRING, SOAP VALVE		
6	1	VALVE, THERMAL RELIEF		
7	1	PLUG		
8	1	O-RING, CHECK VALVE		
		CORE, NON-RETURN CHECK VALVE		
		SPRING, CHECK VALVE		
11	1	O-RING		
12	2	O-RING		
13	1	QUICK CONNECT CONNECTOR, OUTLET		
14	1	O-RING		
15	1	SCREEN, WATER INLET		
16	1	INLET, CONNECTOR		
17	1	NUT, HAND TIGHT		
18	1	O-RING		
19	1	BALL		
20	2	O-RING		
21	1	UNLOADER VALVE SEAT		
22	3	PLUG		
23	3	O-RING		
24	1	PLUG		
25	3	RETAINER		
26	1	UNLOADER CAP		
		CAP LOCKER		
		NUT M6		
		SCREW		
		UNLOADER NUT		
		SET SCREW		
		UNLOADER SPRING		
		UNLOADER VALVE CAP		
		O-RING, 15X1.8		
		O-RING, 14X1.8		
		BACK UP RING		
		O-RING, 5.6X1.8		
		LOCK PIN		
		STEM ASSY		
		O-RING, 9X1.8		
		BACK UP RING		
		SEAL, LOW PRESSURE		
		O-RING		
		48	1	RING, ANTI-EXT
		49	1	SEAL, HIGH PRESSURE
50	1	MANIFOLD		
		VALVE CAP, PRESSURE BOOST		
		SPRING, BOOST VALVE		
		VALVE, PRESSURE BOOST		
		BACK RING		
		O-RING		



55 **PART NO. 7109078**  
CRANKCASE KIT

ITEM	QTY	DESCRIPTION
27	3	SCREW
28	1	COVER, SIDE
		O-RING
		SIGHT GLASS
		RING Ø40, RETAINING
29	1	RING Ø20, RETAINING
30	1	BEARING, NUP 304E
31	1	CRANKCASE
32	3	BOLT
		GASKET
		PLUNGER, CERAMIC
		RING
		PLUNGER, POLE, BASE
		CONNECTING ROD
		PIN, CONNECTING ROD
33	1	O-RING
34	1	CRANKCASE, END COVER
35	4	SCREW
36	4	SCREW
37	1	BAFFLE
38	1	OIL SEAL
39	1	RING Ø25, RETAINING
40	1	BEARING NUP 205E
41	1	KEY
42	1	CRANKSHAFT
43	1	VENT CAP
44	3	O-RING
45	3	PLUG
46	3	OIL SEAL
47	3	RETAINER, SEAL

