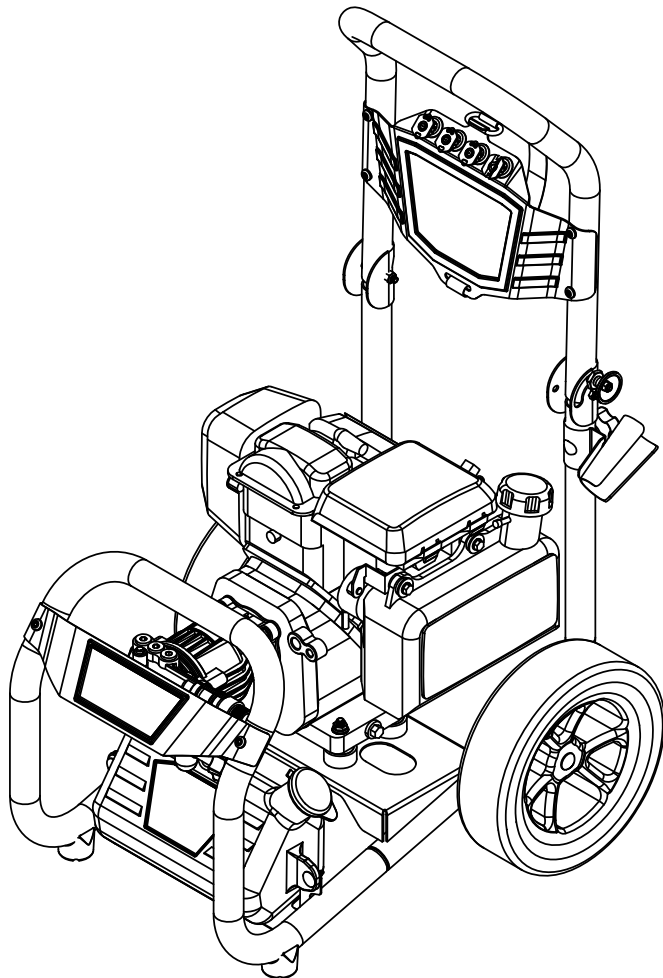
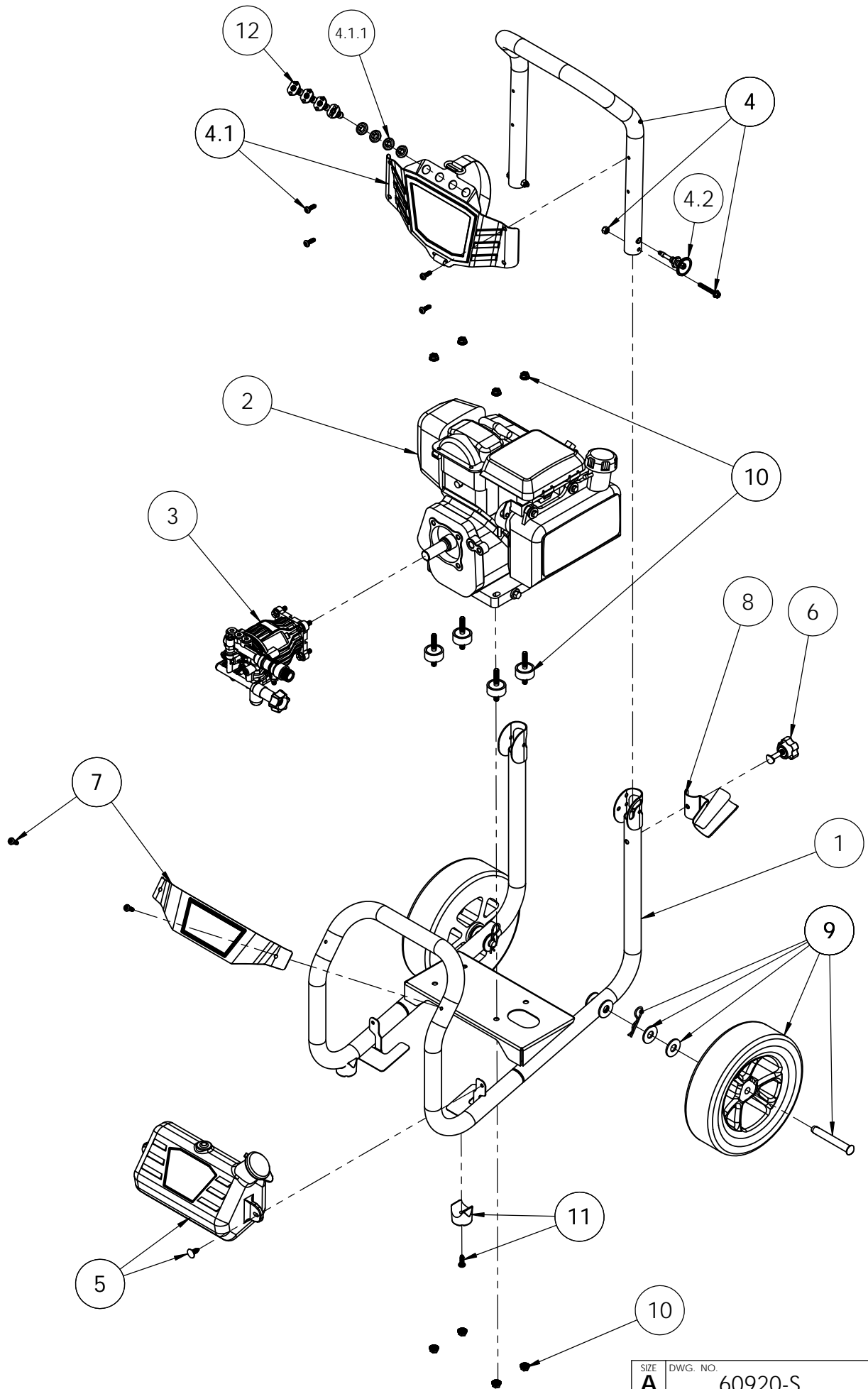


ITEM NO.	PART NO.	DESCRIPTION	QTY.
1	7110387	FRAME ASSY, BLACK, 12" C-C, MS60920	1
2	7107312	ENGINE SVC ASSY, HONDA GC190 W/ LABELS	1
3	7109581	PUMP, SVC ASSY	1
4	7110769	HANDLE SERVICE ASSY, 60920	1
4.1	7110768	DASHBOARD SERVICE ASSY, UPPER, 60920	1
4.1.1	7106833	HOLDER, NOZZLE SINGLE	4
4.2	7110341	SPRING-ASSISTED PLUNGER	1
5	7110767	SOAP TANK SVC ASSY, 60920	1
6	7107941	KNOB-BOLT ASSEMBLY	1
7	7110770	DASHBOARD SERVICE ASSY, LOWER, 60920	1
8	7110492	STEEL GUN HOLDER, PAINTED SILVER, 1.25" OD TUBE	1
9	7110764	WHEEL SVC ASSY, 60920	2
10	7108382	HARDWARE KIT, ENGINE MOUNT VIBRATION DAMPING	1
11	7105468	FOOT, SVC KIT FITTED RUBBER AND SCREW	2
12	7108546	NOZZLE, 4 PC 1PCSS 1/4QC 0,15,40,&PSOAP	1

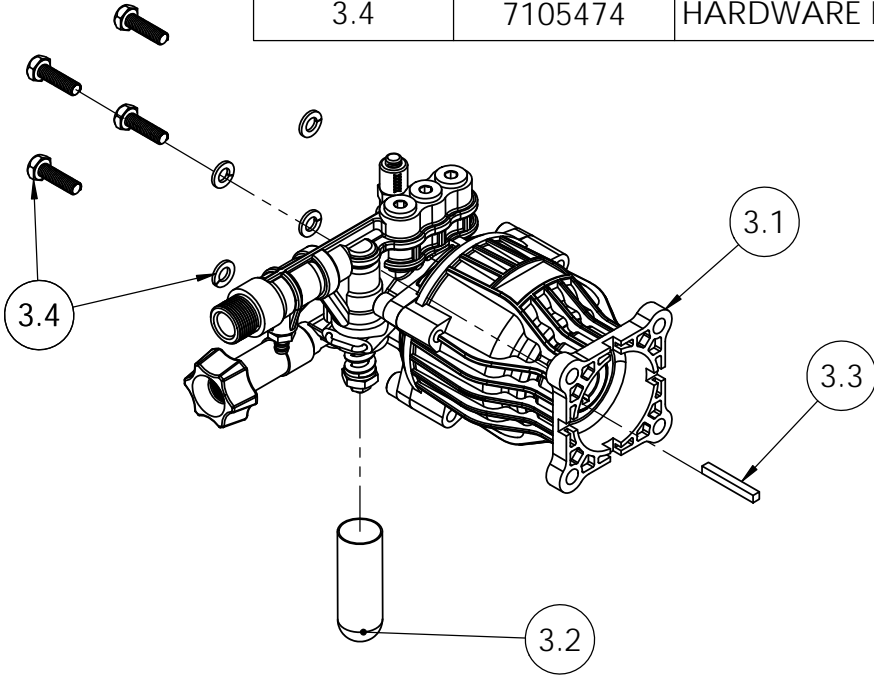


NAME			DATE		
DRAWN	JHS	JAN 2018	FNA-GROUP 1265 INDUSTRIAL STREET, DECATUR, AR 72722 TITLE: MS60920 3200PSI @ 2.5GPM		
CHECKED	DH/OSW	JAN 2018			
ENG APPR.	OSW	JAN 2018			
MFG APPR.	-	-			
O.A. APPR.	-	-			
SERVICE APPR.	DH	JAN 2018	PROPRIETARY AND CONFIDENTIAL THE INFORMATION CONTAINED IN THIS DRAWING IS THE SOLE PROPERTY OF FNA-GROUP. ANY REPRODUCTION IN PART OR AS A WHOLE WITHOUT THE WRITTEN PERMISSION OF FNA-GROUP IS PROHIBITED.		
SIZE	DWG. NO.		REV.		
A	60920-S		A		
SCALE:	N/A	ECN# EC180020	SHEET 1 OF 3		



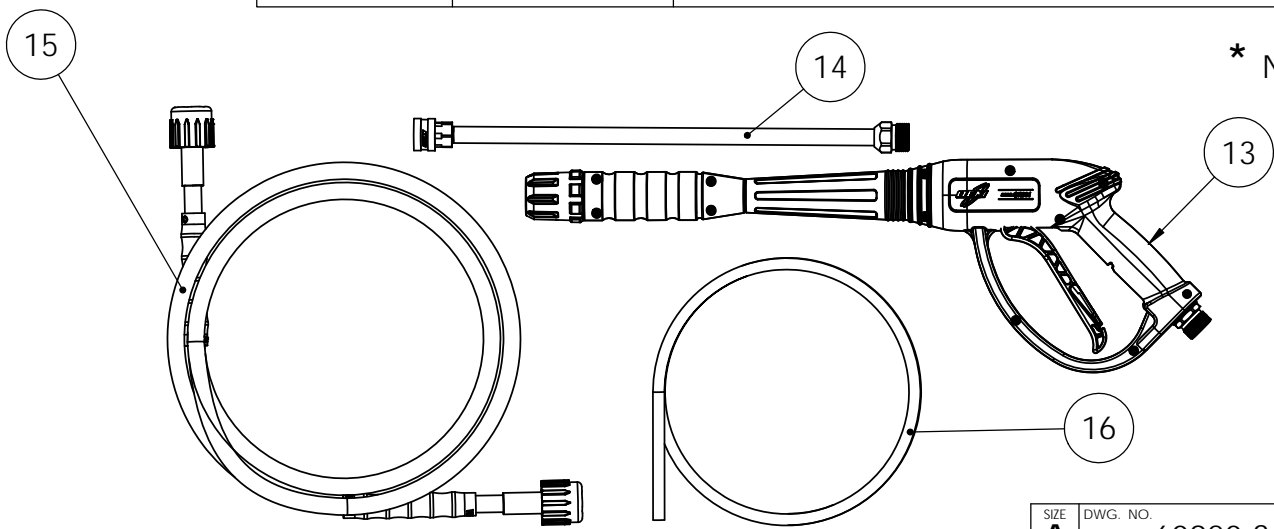
SIZE	DWG. NO.	REV.
A	60920-S	A
SCALE: N/A	WEIGHT: 70.335 lbs	SHEET 2 OF 3

ITEM NO.	PART NUMBER	DESCRIPTION	QTY.
3	7109581	PUMP, SVC ASSY	1
3.1	520004	PUMP, HORZ, 12mmx12DEG, P/B, AL UNIHEAD	1
3.2		CAP, UNLOADER COVER 1 1/2" x 5/8" BLACK	1
3.3	7101506	KEY, SHAFT 3/16 X 3/16 X 1-1/2	1
3.4	7105474	HARDWARE KIT, PUMP MOUNTING	1



t NOT SOLD SEPERATELY

ITEM NO.	PART NUMBER	DESCRIPTION	QTY.
13	7109565	GUN, 3600PSI 8GPM M22(M) X M22(F) OEM	1
14	7103550	LANCE, 16" W/ 1/4 QC AND M22(M)	1
15	7108545	HOSE, MORFLEX 1/4" x 50' x 3100PSI M22 x M22	1
16	7107745	HOSE, SOAP CLEAR 5.7MM X 8.9MM OD	1
* 17	7102045	TOOL, NOZZLE CLEANING, UNIVERSAL	1



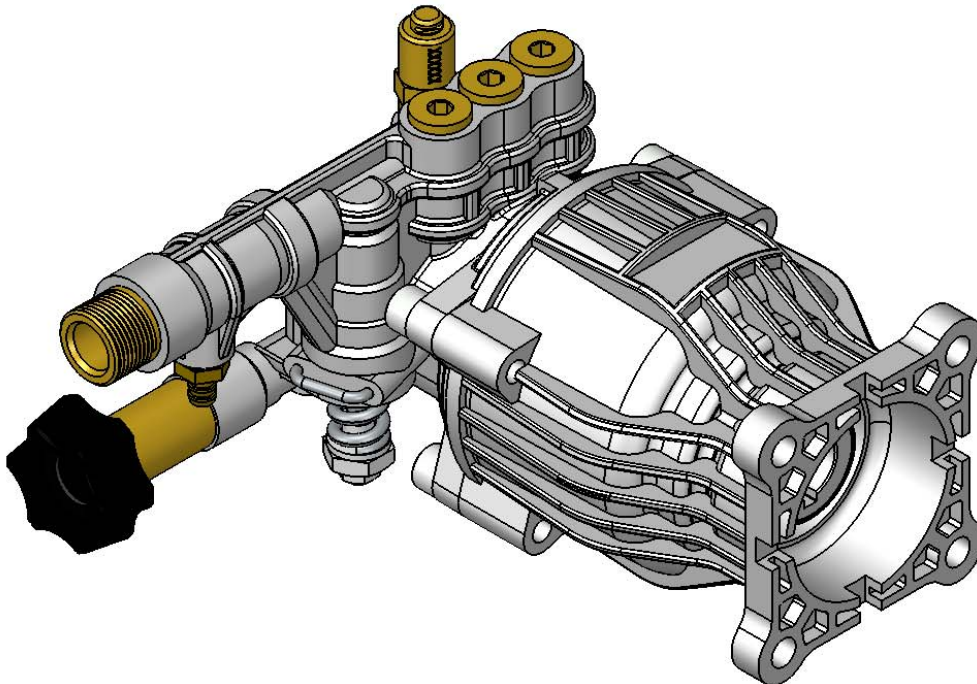
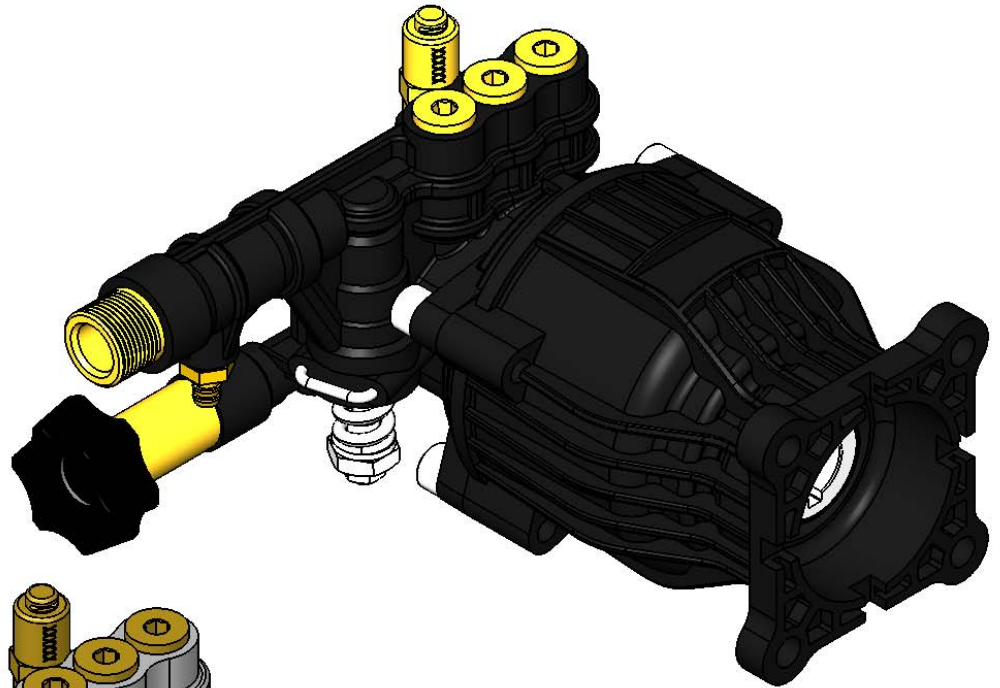
* NOT SHOWN

OEM HORIZONTAL AXIAL PUMP IPL

PUMPS COVERED IN THIS IPL

520004

520006



	NAME	DATE
DRAWN	JHS	AUG 2017
CHECKED	DH/OSW	AUG 2017
ENG APPR.	OSW	AUG 2017
MFG APPR.	-	-
O.A. APPR.	-	-
SERVICE APPR.	DH	AUG 2017

PROPRIETARY AND CONFIDENTIAL
 THE INFORMATION CONTAINED IN THIS DRAWING IS THE SOLE PROPERTY OF FNA-GROUP. ANY REPRODUCTION IN PART OR AS A WHOLE WITHOUT THE WRITTEN PERMISSION OF FNA-GROUP IS PROHIBITED.

FNA-GROUP

1265 INDUSTRIAL STREET, DECATUR, AR 72722

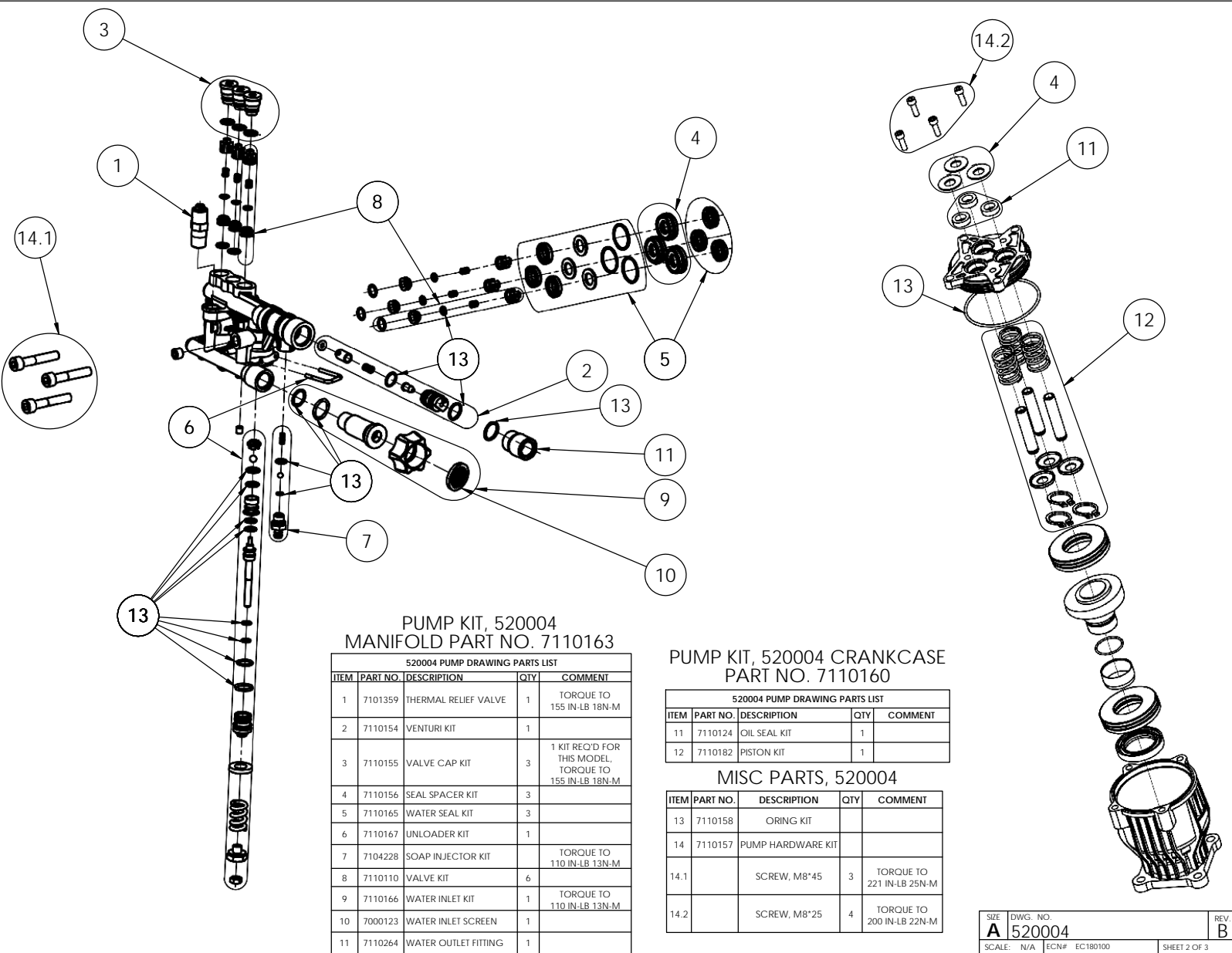
TITLE:

OEM HORIZONTAL AXIAL PUMPS 520004 520006

SIZE	DWG. NO.	REV.
A	520004 520006	B
SCALE:	N/A	ECN# EC180100

SHEET 1 OF 3

Version: 2018



PUMP KIT, 520004
MANIFOLD PART NO. 7110163

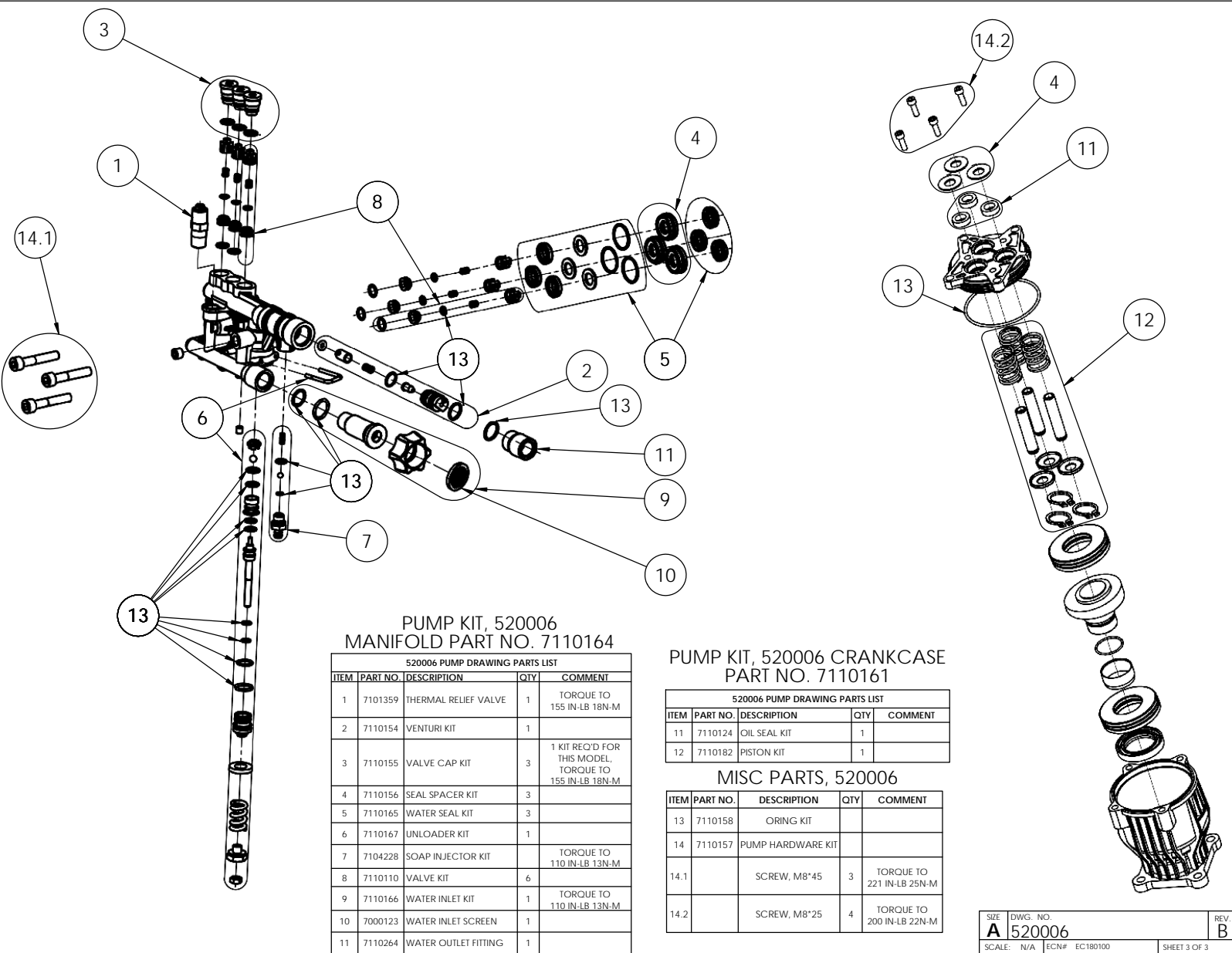
520004 PUMP DRAWING PARTS LIST				
ITEM	PART NO.	DESCRIPTION	QTY	COMMENT
1	7101359	THERMAL RELIEF VALVE	1	TORQUE TO 155 IN-LB 18N-M
2	7110154	VENTURI KIT	1	
3	7110155	VALVE CAP KIT	3	1 KIT REQ'D FOR THIS MODEL, TORQUE TO 155 IN-LB 18N-M
4	7110156	SEAL SPACER KIT	3	
5	7110165	WATER SEAL KIT	3	
6	7110167	UNLOADER KIT	1	
7	7104228	SOAP INJECTOR KIT		TORQUE TO 110 IN-LB 13N-M
8	7110110	VALVE KIT	6	
9	7110166	WATER INLET KIT	1	TORQUE TO 110 IN-LB 13N-M
10	7000123	WATER INLET SCREEN	1	
11	7110264	WATER OUTLET FITTING	1	

PUMP KIT, 520004 CRANKCASE
PART NO. 7110160

520004 PUMP DRAWING PARTS LIST				
ITEM	PART NO.	DESCRIPTION	QTY	COMMENT
11	7110124	OIL SEAL KIT	1	
12	7110182	PISTON KIT	1	

MISC PARTS, 520004

ITEM	PART NO.	DESCRIPTION	QTY	COMMENT
13	7110158	ORING KIT		
14	7110157	PUMP HARDWARE KIT		
14.1		SCREW, M8*45	3	TORQUE TO 221 IN-LB 25N-M
14.2		SCREW, M8*25	4	TORQUE TO 200 IN-LB 22N-M



PUMP KIT, 520006
MANIFOLD PART NO. 7110164

520006 PUMP DRAWING PARTS LIST				
ITEM	PART NO.	DESCRIPTION	QTY	COMMENT
1	71101359	THERMAL RELIEF VALVE	1	TORQUE TO 155 IN-LB 18N-M
2	7110154	VENTURI KIT	1	
3	7110155	VALVE CAP KIT	3	1 KIT REQ'D FOR THIS MODEL, TORQUE TO 155 IN-LB 18N-M
4	7110156	SEAL SPACER KIT	3	
5	7110165	WATER SEAL KIT	3	
6	7110167	UNLOADER KIT	1	
7	7104228	SOAP INJECTOR KIT		TORQUE TO 110 IN-LB 13N-M
8	7110110	VALVE KIT	6	
9	7110166	WATER INLET KIT	1	TORQUE TO 110 IN-LB 13N-M
10	7000123	WATER INLET SCREEN	1	
11	7110264	WATER OUTLET FITTING	1	

PUMP KIT, 520006 CRANKCASE
PART NO. 7110161

520006 PUMP DRAWING PARTS LIST				
ITEM	PART NO.	DESCRIPTION	QTY	COMMENT
11	7110124	OIL SEAL KIT	1	
12	7110182	PISTON KIT	1	

MISC PARTS, 520006

ITEM	PART NO.	DESCRIPTION	QTY	COMMENT
13	7110158	ORING KIT		
14	7110157	PUMP HARDWARE KIT		
14.1		SCREW, M8*45	3	TORQUE TO 221 IN-LB 25N-M
14.2		SCREW, M8*25	4	TORQUE TO 200 IN-LB 22N-M