



Performance Under Pressure

PARTS LIST FOR
CW-5004-OME3
(AFTER SERIAL #10235166)

Motor Horsepower:	15 HP
Pump Oil Grade:	Mi-T-M Pump Oil #AW-4085-0016
Pump Oil Capacity:	31.0 oz.
Nozzle Size:	3.5

This Parts Listing has been compiled for your benefit. You can be assured your Mi-T-M Cold Water Pressure Washer was constructed and designed with quality and performance in mind using over 25 years experience in the pressure washer business. Each component has been rigorously tested to insure the highest level of acceptance.

The contents of this Parts Listing are based on the latest product information available at the time of publication. Mi-T-M reserves the right to make changes in price, color, materials, equipment, specifications or models at any time without notice.

WARNING

THIS IS A PROFESSIONAL HIGH PRESSURE, COLD WATER PRESSURE WASHER. CAUTION SHOULD BE OBSERVED WHEN USING OR REPAIRING THIS UNIT! READ AND FOLLOW THE SAFETY WARNINGS LISTED BELOW BEFORE ATTEMPTING ANY REPAIRS ON THIS PRESSURE WASHER!

SAFETY WARNINGS

1. NEVER alter or modify the equipment. Be sure any accessory items and system components being used will withstand the pressure developed. Use only genuine Mi-T-M parts for repair of your pressure washer. Failure to do so can cause hazardous operating conditions and will VOID warranty.
2. NEVER make adjustments on machinery while the unit is connected to the power source. Turning over the machinery by hand during adjustment or cleaning might start the machinery, causing serious injury to the operator.
3. Know how to stop and bleed pressures quickly. Be thoroughly familiar with controls.
4. Before servicing the unit, turn unit off, relieve the water pressure and allow the unit to cool down. Do not make repairs while the unit is running. Service in a clean, dry, flat area.
5. After testing the machine, DO NOT leave the pressurized unit unattended. Shut off the unit and release trapped pressure before leaving.

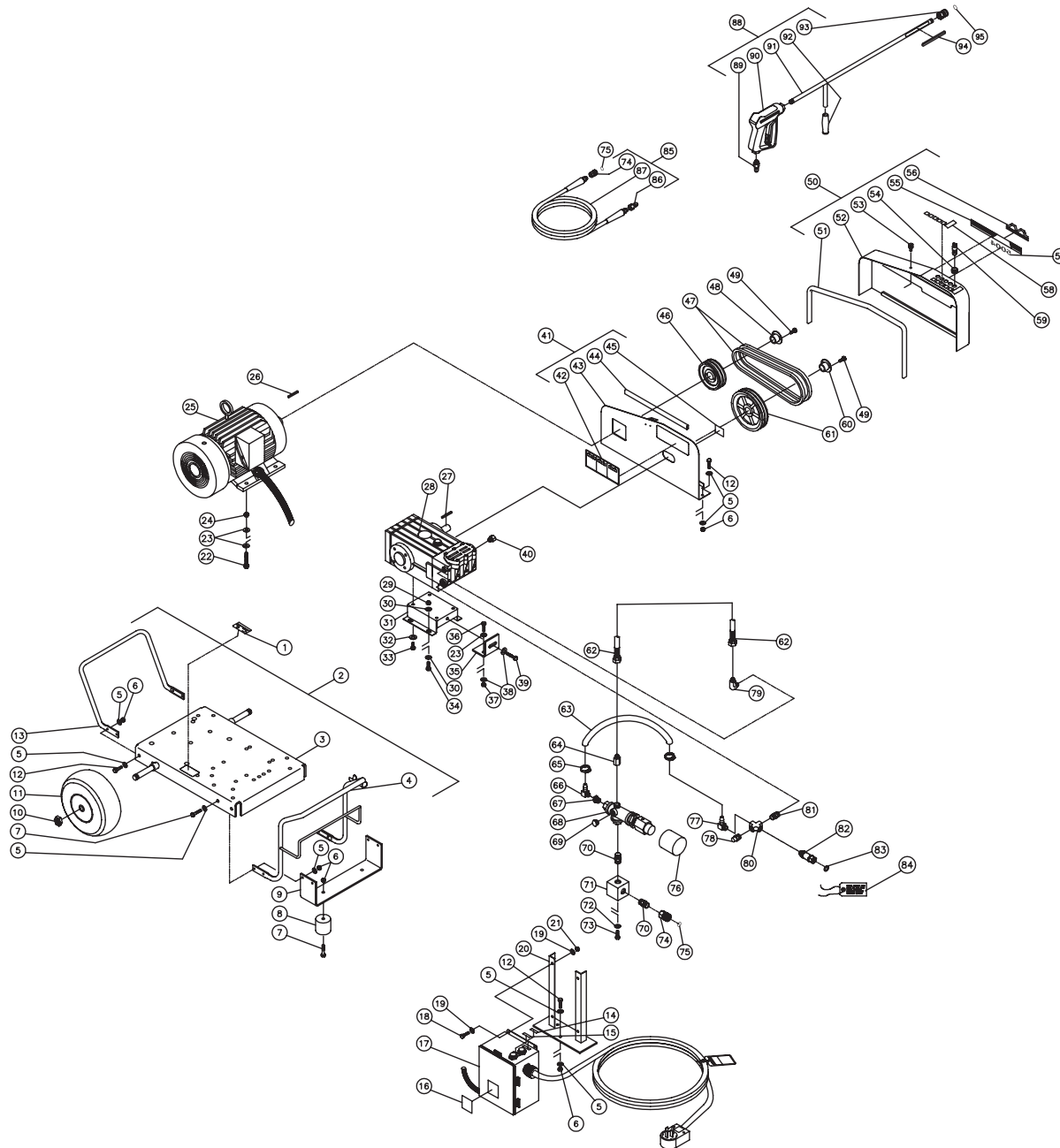
Table of Contents

SPECIFICATIONS	3
FRAME ASSEMBLY FOR CW-5004-0ME3 (AFTER SERIAL #10235166)	4
PUMP ASSEMBLY (3-0261)	6
UNLOADER ASSEMBLY (8-0522)	8
GUN ASSEMBLY (16-0343)	10
CONTROL BOX ASSEMBLY (230 VOLT) (AFTER SERIAL #10154637)	12
WIRING SCHEMATIC (230 VOLT)	14
WIRING DIAGRAM (230 VOLT)	15
CONTROL BOX ASSEMBLY (CX-0057 OPTION) (460 VOLT)	16
WIRING SCHEMATIC (460 VOLT)	18
WIRING DIAGRAM (460 VOLT)	19

SPECIFICATIONS

MODEL NUMBER	CW-5004-0ME3
Operating Pressure (PSI/Bar):	5000/344.7
High Pressure Nozzle:	3.5
Water Volume (GPM/lpm):	4.0/15.1
Motor:	Totally enclosed fan cooled, circuit breaker thermal overload protection, 35ft. power supply cord.
Horsepower	15.0
Voltage	230
Phase	Three
Amps	40
Pump:	Belt Driven, Oil Bath, Triplex Piston
Oil Type	Mi-T-M Pump Oil #AW-4085-0016
Oil Capacity (oz./liters)	31.0/.92
Plungers	Ceramic
Manifold	Forged Brass
Valves	Stainless Steel
Unloader	Preset
Heat Dump Valve	Relieves heated water during unloader bypass stage
Unit Net Weight w/Marathon (lbs/Kg)	379/172
Unit Shipping Weight w/Marathon (lbs/Kg)	520/236
Unit Net Weight w/Baldor (lbs/Kg)	424/192
Unit Shipping Weight w/Baldor (lbs/Kg)	565/256
Unit Net Dimension (in/cm)	45.5Lx32.5Wx30H/ 115.5Lx82.5Wx76.5H
Unit Shipping Dimension (in/cm)	48.5Lx30.5Wx35.5H/ 123Lx77.5Wx90H

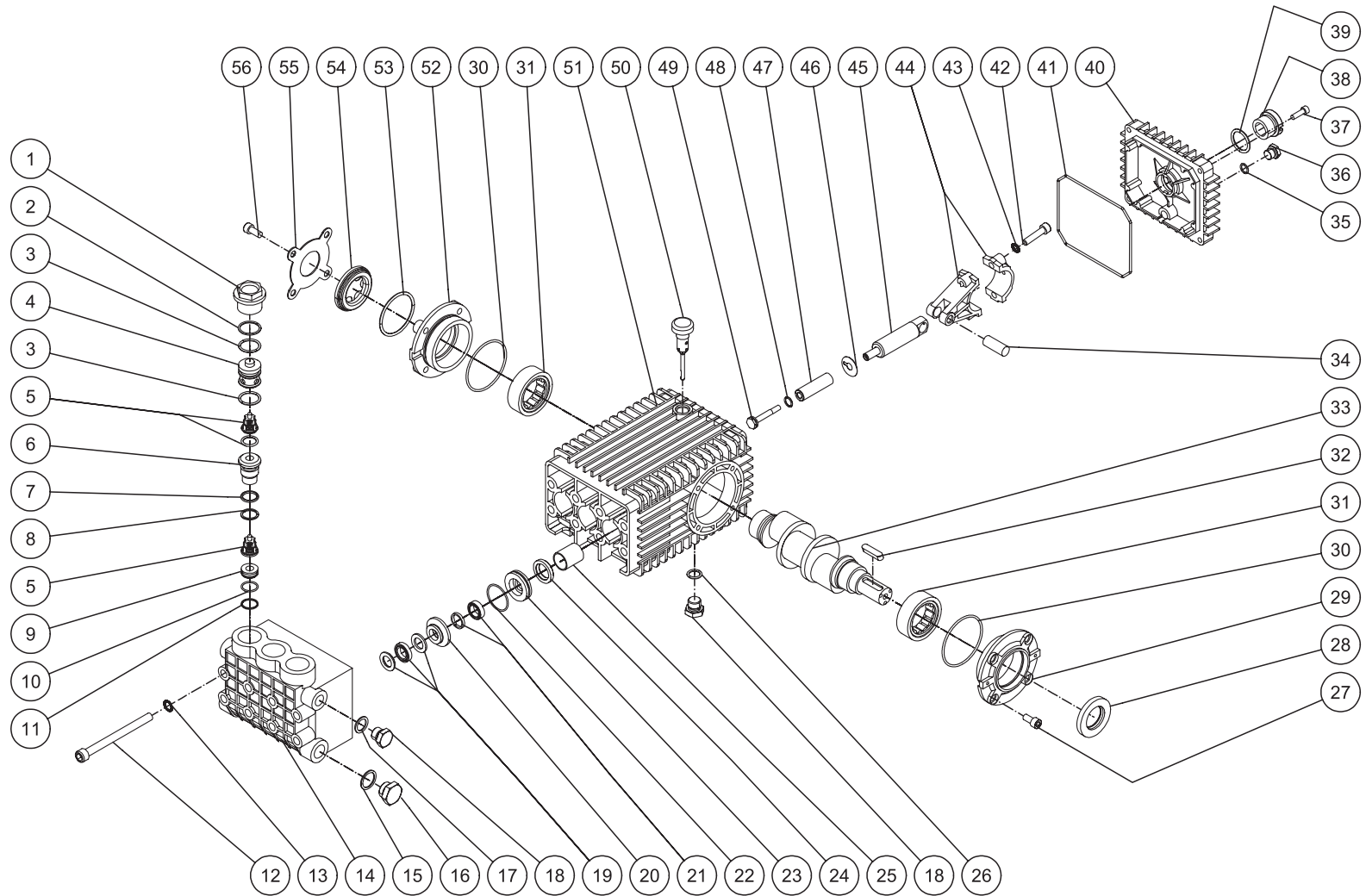
FRAME ASSEMBLY FOR CW-5004-0ME3 (AFTER SERIAL #10235166)



CW-5004-0ME3-012109-CAW

FRAME ASSEMBLY FOR CW-5004-0ME3 (AFTER SERIAL #10235166)											
REF. #	DESCRIPTION	PART #	QTY.	REF. #	DESCRIPTION	PART #	QTY.	REF. #	DESCRIPTION	PART #	QTY.
1	Decal- Data Plate	N/A	1	34	Bolt	27-0166	4	65	Hose Clamp	42-0011	2
2	Base Plate Assembly (Inc. 3-13)	851-0333	1	35	Brace Tightener	13-0003A01	1	66	Fitting	23-0050	1
3	Base Plate	5-0137A01	1	36	Bolt	27-0119	2	67	Bushing	23-0016	1
4	Handle	7-0102A01	1	37	Locknut	30-0159	2	68	Unloader	8-0522	1
5	Washer	28-0003	30	38	Washer	28-0023	3	69	Plug	39-0017	1
6	Locknut	30-0157	17	39	Bolt	27-0576	1	70	Nipple Fitting	24-0024	2
7	Bolt	27-0068	6	40	Safety Relief Valve	22-0319	1	71	Manifold Block	51-0012	1
8	Isolator	14-0008	2	41	Beltguard Back Assembly (Inc. 43-46)	851-0335	1	72	Washer	29-0008	2
9	Underbracket	13-0015A01	1	42	Decal- Warning/Caution/Operation	34-0925	1	73	Bolt	27-0116	2
10	Jamnut	30-0117	2	43	Beltguard Back (See 851-0335)	N/A Sep.	1	74	Quick Connect Socket	17-0041	2
11	Wheel	14-0006	2	44	Edging *(Two Feet Required)	33-0020	1	75	O-ring (Replacement Only)	25-0123	-
12	Bolt	27-0067	11	45	Decal- Warning: Beltguard Cover	34-0575	1	76	Shrink Tube *(One Foot Required)	33-0272	1
13	Handle	7-0105A01	1	46	Sheave	10-0108	1	77	Elbow	23-0418	1
14	Decal- Stop	34-0249	1	47	Belt	11-0047	2	78	Heat-Dump Valve	22-0005	1
15	Decal- Run	34-0250	1	48	Bushing	9-0072	1	79	Fitting	24-0092	1
16	Decal- Do not Spray	34-0391	1	49	Bolt w/Bushing	27-0068	6	80	Cross Fitting	23-0071	1
17	Control Box - 230V (See Exploded Drawing)	N/A Sep.	1	50	Beltguard Cover Assembly (Inc. 50-57)	850-0242	1	81	Fitting	23-0012	1
-	Control Box - 480V (See Exploded Drawing)	N/A Sep.	1	51	Edging *(Four Feet Required)	33-0020	1	82	Filter Assembly	19-0206	1
18	Bolt	27-0015	4	52	Beltguard Cover (See 850-0242)	N/A Sep.	1	83	Garden Hose Gasket	26-0001	1
19	Washer	28-0002	8	53	Fastner	33-0197	1	84	Tag- Water Supply Inlet	34-0097	1
20	Bracket	13-0127A01	1	54	Grommet	33-0001	5	85	Pressure Hose Assembly (Inc. 75, 87-88)	851-0317	1
21	Locknut	30-0155	4	55	Decal- Mi-T-M Stripe	34-2189	1	86	Quick Connect Plug	17-0006	1
22	Bolt	31-5033	4	56	Mi-T-M Logo	34-2169	1	87	Pressure Hose	15-0178	1
23	Washer	28-0006	8	57	Decal- Die Cut 5004	34-2217	1	88	Gun/Wand Assembly (Inc. 90-94)	851-0309	1
24	Locknut	30-0163	4	58	Decal- Die Cut Nozzles	34-0500	1	89	Quick Connect Plug	17-0005	1
25	Motor- 15 H.P.	2-0018	1	59	Spray Nozzle- 0003.5	18-0257	1	90	Gun	16-0343	1
26	Key	43-0078	1	60	Spray Nozzle- 1503.5	18-0258	1	91	Wand- w/ 36" Handle	16-0342A01	1
27	Key w/Pump	43-0028	1	-	Spray Nozzle- 2503.5	18-0259	1	92	Grip Handle	7-0002	1
28	Pump	3-0261	1	-	Spray Nozzle- 4003.5	18-0260	1	93	Quick Connect Socket	17-0036	1
29	Locknut	30-0161	4	-	Bushing	9-0073	1	94	Decal- Risk of Injection	34-0572	1
30	Washer	28-0030	8	61	Sheave	10-0107	1	95	O-ring (Replacement Only)	25-0122	-
31	Pump Bracket	5-0101A01	1	62	Hose	15-0177	1	*Must Order in One Foot Lengths			
32	Washer w/Pump	29-0054	4	63	By-Pass Hose *(Two Feet Required)	15-0007	1				
33	Bolt w/Pump	27-8042	4	64	Adapter	24-0150	1				

PUMP ASSEMBLY (3-0261)

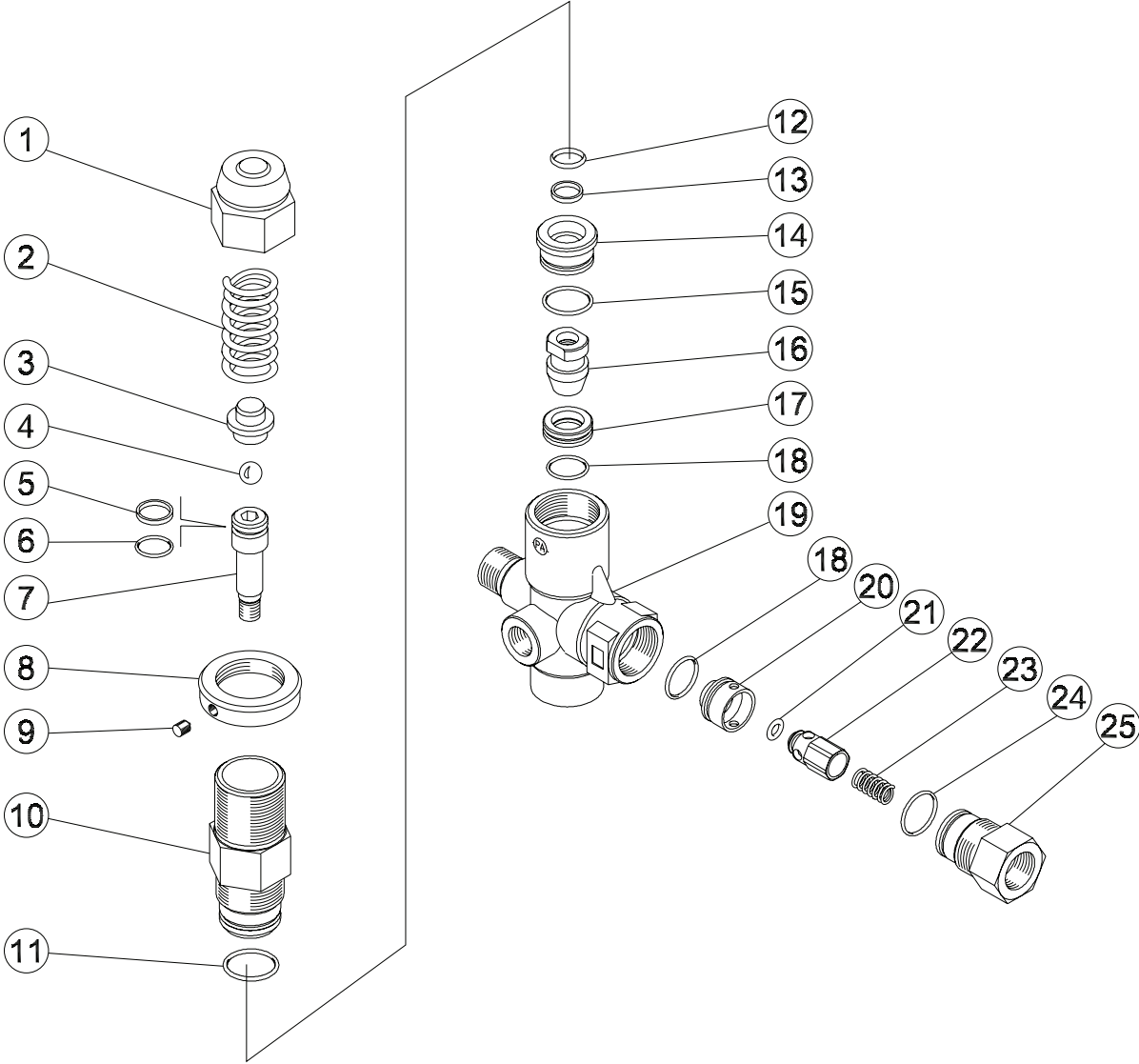


3-0261-122007-JJT

PUMP ASSEMBLY (3-0261)

REF. #	DESCRIPTION	PART #	QTY.	REF. #	DESCRIPTION	PART #	QTY.	REF. #	DESCRIPTION	PART #	QTY.
1	Valve Plug	46-1203	3	21	Low Pressure Seal (See 70-0434)	N/A Sep.	3	41	O-ring	25-0339	1
2	Backup Ring	25-0592	3	22	O-ring	25-0015	3	42	Bolt	27-8435	6
3	O-ring	25-0139	6	23	Low Pressure Seal Retainer (See 70-0434)	N/A Sep.	3	43	Lockwasher	29-1014	1
4	Cap	46-1206	3	24	Oil Seal	26-0047	3	44	Connecting Rod	46-1211	3
5	Valve Assembly (See 70-0431)	N/A Sep.	6	25	Bushing	9-0029	3	45	Piston Rod	46-1213	3
6	Guide	46-1205	3	26	O-ring	25-0052	1	46	Slinger Washer	46-1214	3
7	O-ring	25-0160	3	27	Bolt	27-8431	4	47	Plunger	46-1215	3
8	Backup Ring	25-0430	3	28	Oil Seal	26-0049	1	48	O-ring	25-0310	3
9	Spacer	46-1204	3	29	Crankcase Open Cover	46-1217	1	49	Bolt	46-1216	3
10	O-ring	25-0130	3	30	O-ring	25-0590	2	50	Oil Dipstick	46-0144	1
11	Backup Ring	25-0591	3	31	Bearing	46-0085	2	51	Crankcase	46-1209	1
12	Bolt	27-8073	8	32	Key	46-0602	1	52	Crankcase Sightglass Cover	46-1208	1
13	Lockwasher	29-0155	8	33	Crankshaft	46-1210	1	53	O-ring	25-0060	1
14	Manifold	46-1202	1	34	Connecting Rod Pin	43-0118	3	54	Sightglass	46-0574	1
15	Washer	28-1038	1	35	O-ring	25-0014	1	55	Sightglass Cover	46-1207	1
16	Hex Plug	39-0019	1	36	Hex Plug	39-0017	1	56	Bolt	27-8433	4
17	Washer	28-1002	1	37	Bolt	27-8812	4		Oil Seal Kit (Inc. 3 each 24)	70-0432	
18	Hex Plug	39-0018	2	38	Sight Glass	46-1163	1		Valve Kit (Inc. 6 each 5)	70-0431	
19	High Pressure Seal Assembly (See 70-0434)	N/A Sep.	3	39	O-ring	25-0059	1		Low/High Pressure Seals (Inc. 3 each 19, 21)	70-0433	
20	High Pressure Intermediate Seal Retainer (See 70-0434)	N/A Sep.	3	40	Crankcase Cover	46-1212	1		Packing Kit (Inc. 1 each 19-23)	70-0434	

UNLOADER ASSEMBLY (8-0522)

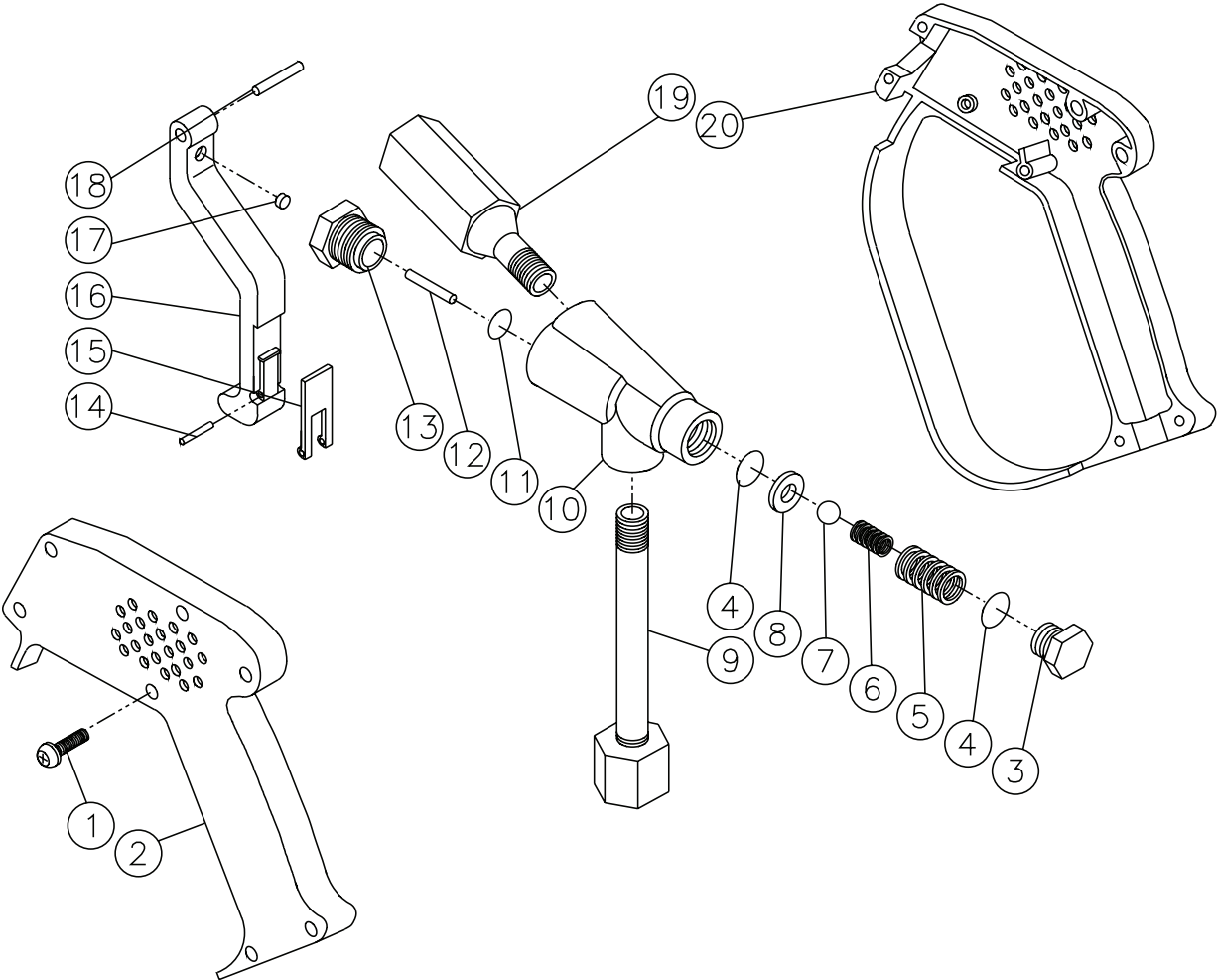


8-0522-120501-RD

UNLOADER ASSEMBLY (8-0522)

REF. #	DESCRIPTION	PART #	QTY.	REF. #	DESCRIPTION	PART #	QTY.
1	Brass Cap	8-0534	1	15	O-ring	25-0368	1
2	Spring	49-0149	1	16	Shutter	8-0540	1
3	Spring Guide	8-0535	1	17	Seat	8-0541	1
4	Ball	8-0318	1	18	O-ring	25-0220	2
5	Back-up Ring (See 70-0342)	N/A Sep.	1	19	Valve Body	8-0542	1
6	O-ring (See 70-0342)	N/A Sep.	1	20	Check Valve Seat	8-0543	1
7	Piston	8-0536	1	21	O-ring	25-0369	1
8	Lock Ring	8-0537	1	22	Check Valve	8-0486	1
9	Set Screw	8-0408	1	23	Spring	49-0150	1
10	Piston Housing	8-0538	1	24	O-ring	25-0325	1
11	O-ring	25-0189	1	25	Nipple	8-0485	1
12	Back-up Ring (See 70-0343)	N/A Sep.	1		Upper Seal Kit (Inc. 5, 6)	70-0342	1
13	O-ring (See 70-0343)	N/A Sep.	1		Lower Seal Kit (Inc. 12, 13)	70-0343	1
14	Spacer	8-0539	1				

GUN ASSEMBLY (16-0343)

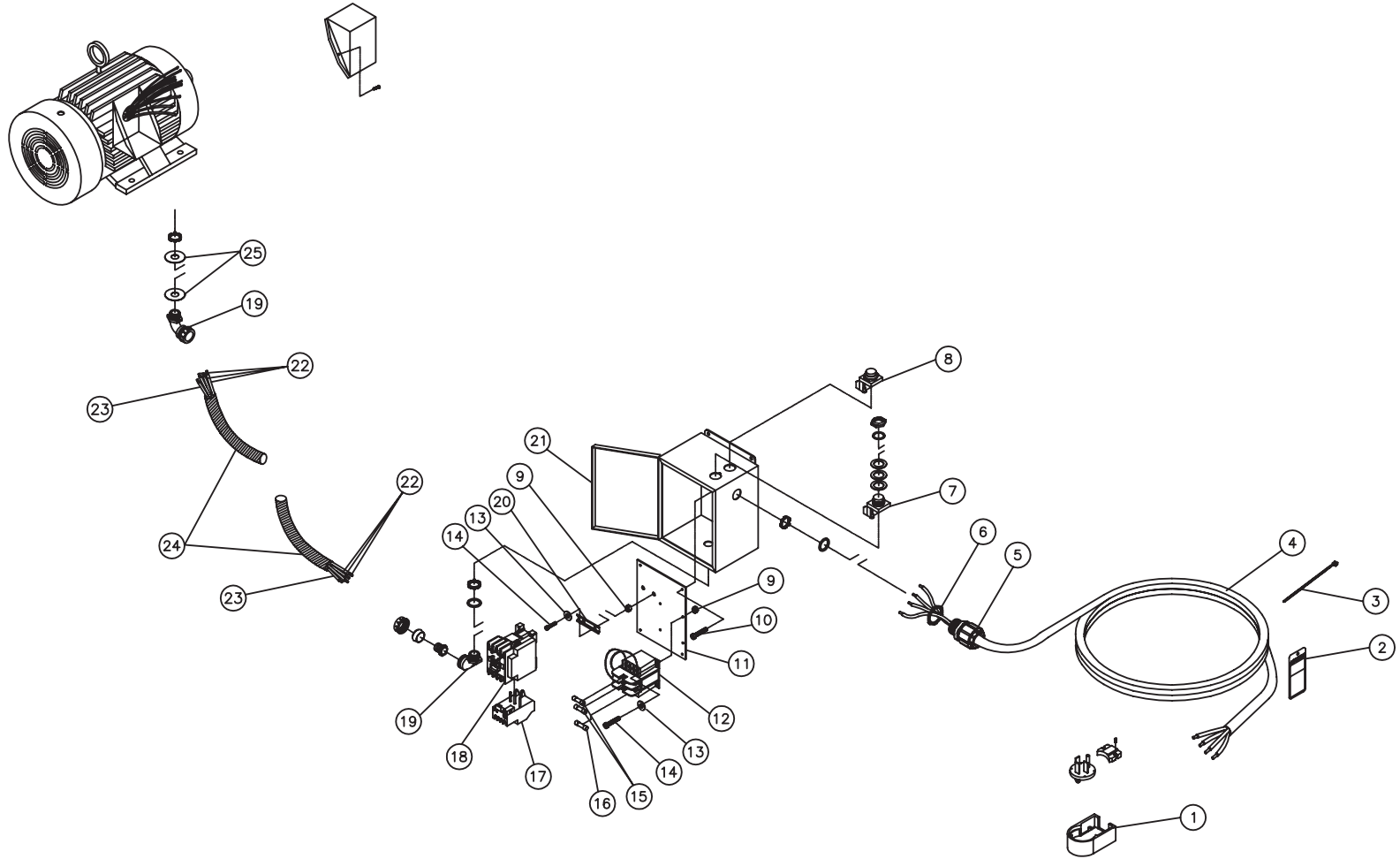


16-0343-042800-RD

GUN ASSEMBLY (16-0343)

REF. #	DESCRIPTION	PART #	QTY.	REF. #	DESCRIPTION	PART #	QTY.
1	Screw	27-8851	7	12	Control Pin (See 70-0213)	N/A Sep.	1
2	Housing- Left Side	16-0344	1	13	Guide Sleeve	16-0048	1
3	Cap	23-0336	1	14	Lock Pin	43-0025	1
4	O-ring (See 70-0213)	N/A Sep.	2	15	Safety Lock	16-0347	1
5	Spring (See 70-0213)	N/A Sep.	1	16	Trigger	16-0348	1
6	Valve Spring (See 70-0213)	N/A Sep.	1	17	Cam Trigger (See 70-0213)	N/A Sep.	1
7	Valve Ball (See 70-0213)	N/A Sep.	1	18	Pin	43-0024	1
8	Valve Seat (See 70-0213)	N/A Sep.	1	19	Discharge Tube Assembly	16-0349	1
9	Inlet Tube Assembly	16-0345	1	20	Housing- Right Side	16-0350	1
10	Valve Body	16-0346	1		Repair Kit (Inc. 4-8, 11, 12, 17)	70-0213	
11	O-ring (See 70-0213)	N/A Sep.	1				

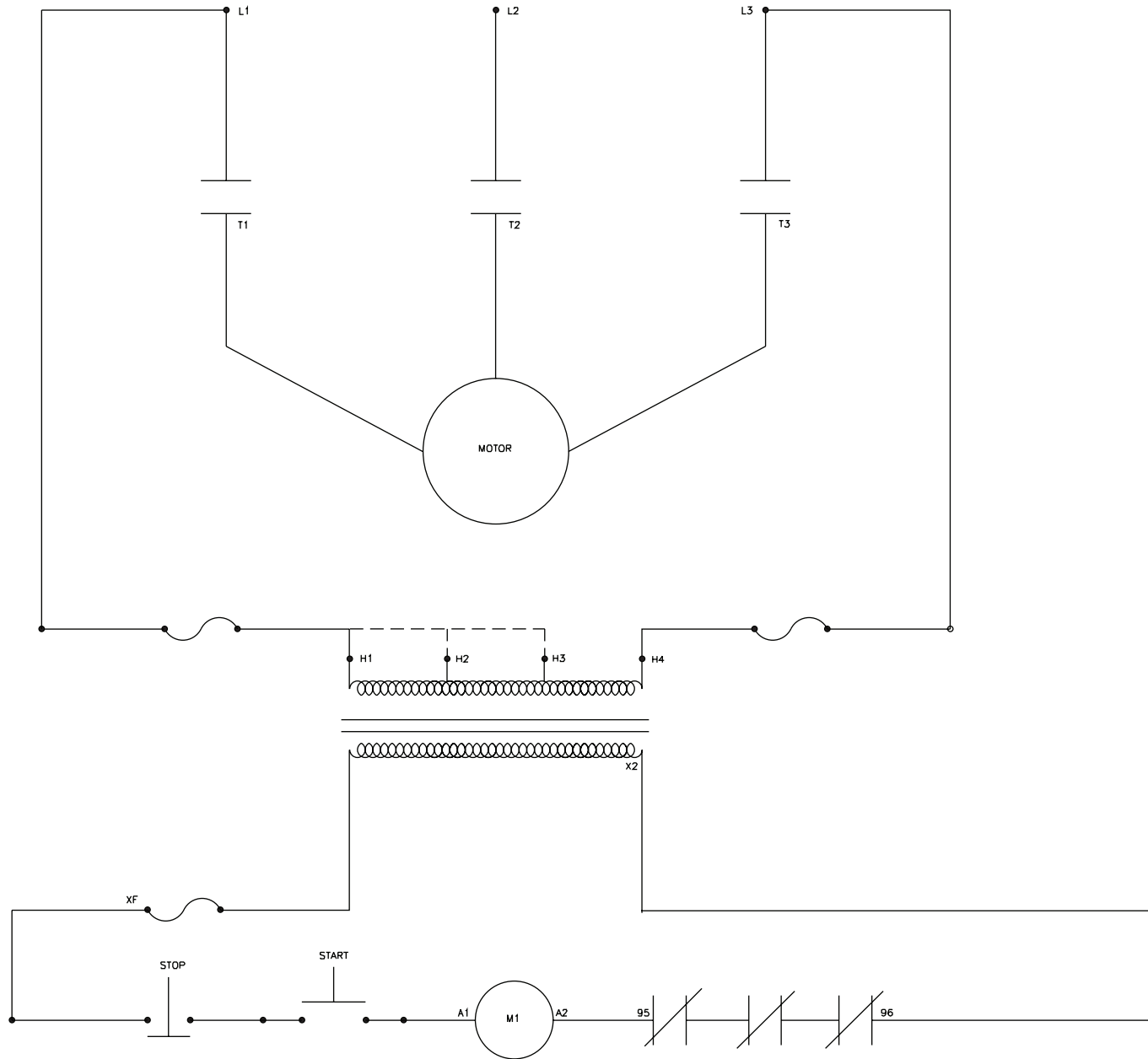
CONTROL BOX ASSEMBLY (230 VOLT) (AFTER SERIAL #10154637)



CW-A-0001-092904-AJG

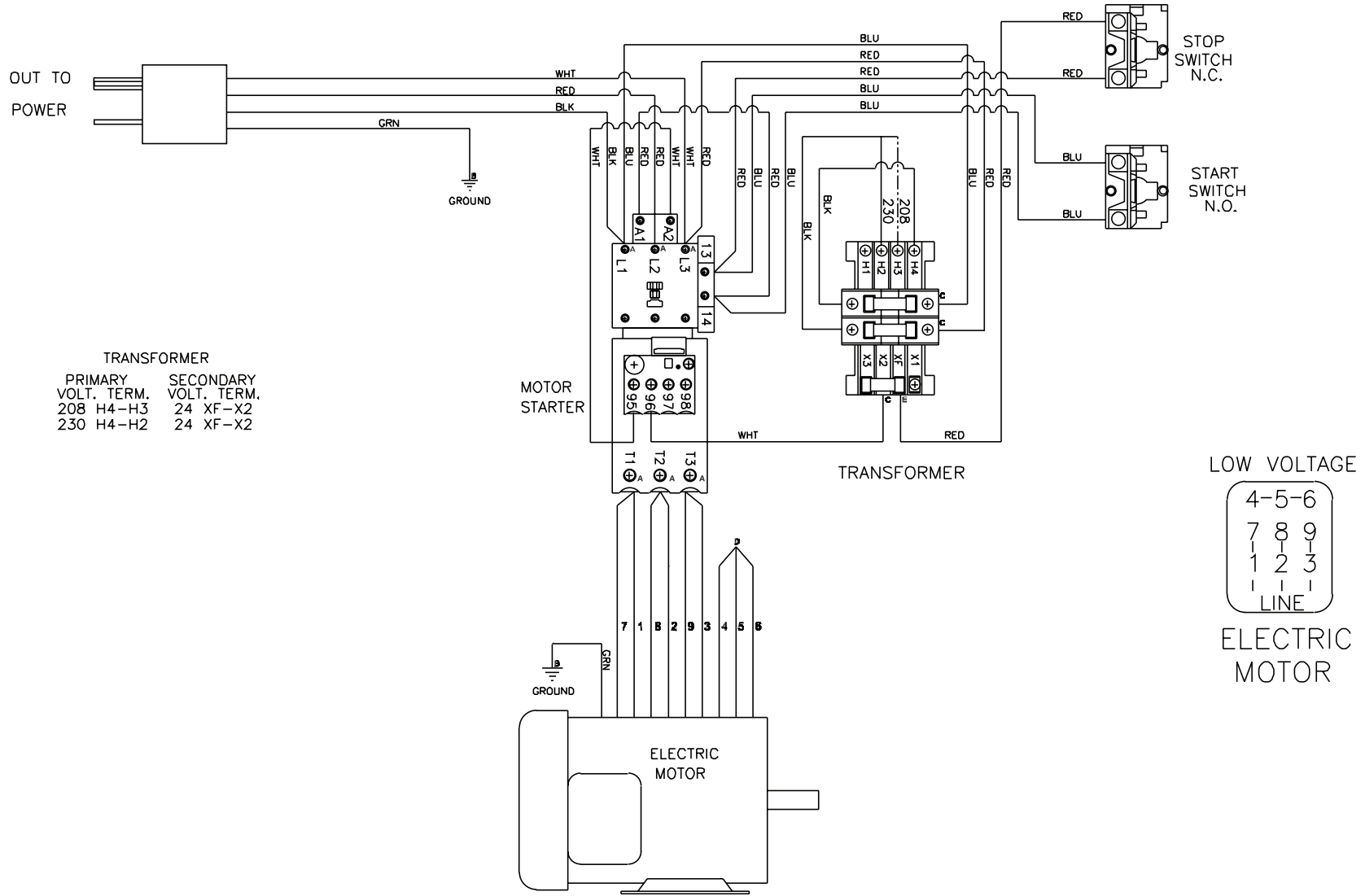
CONTROL BOX ASSEMBLY (230 VOLT) (AFTER SERIAL #10154637)							
REF #	DESCRIPTION	PART #	QTY	REF #	DESCRIPTION	PART #	QTY
1	Plug	32-0647	1	14	Bolt	27-8927	6
2	Tag- Warning: Risk of Electrocution	34-1035	1	15	Fuse- 600V	32-0469	2
3	Cable Tie	33-0022	1	16	Fuse- 125V	32-0619	1
4	Cord *(Ten Feet Required)	32-0123	1	17	Overload Relay	32-0490	1
5	Cord Strain Relief	9-0048	1	18	Contactora	32-0598	1
6	Nut	32-0515	1	19	Conduit	32-0487	2
7	Switch- Red	32-0306	1	20	Din Rail *(One Foot Required)	32-0316	1
8	Switch- Green	32-0305	1	21	Control Box	32-0455	1
9	Locknut	30-8152	6	22	Wire- Black *(Six Feet Required)	32-0501	1
10	Bolt (See 32-0455)	N/A Sep.	4	23	Wire- Green *(Two Feet Required)	32-0622	1
11	Panel	32-0456	1	24	Conduit *(One Foot Required)	32-0486	1
12	Transformer	32-0618	1	25	Washer	32-0648	2
13	Washer	28-0010	6	*Must Order in One Foot Lengths			

WIRING SCHEMATIC (230 VOLT)



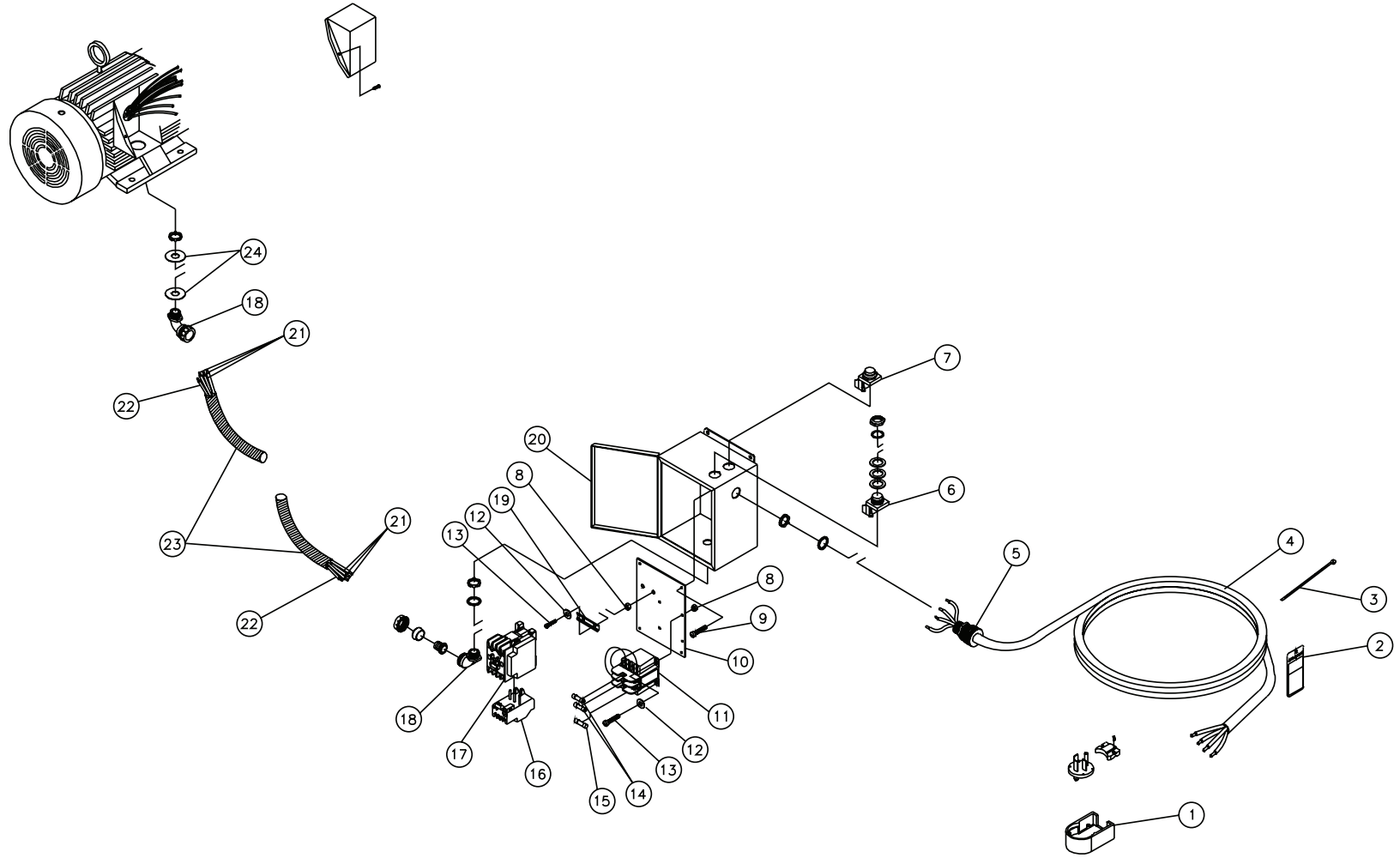
CW-WD-0001-112700-RD

WIRING DIAGRAM (230 VOLT)



CW-WD-0002-070501-EDW

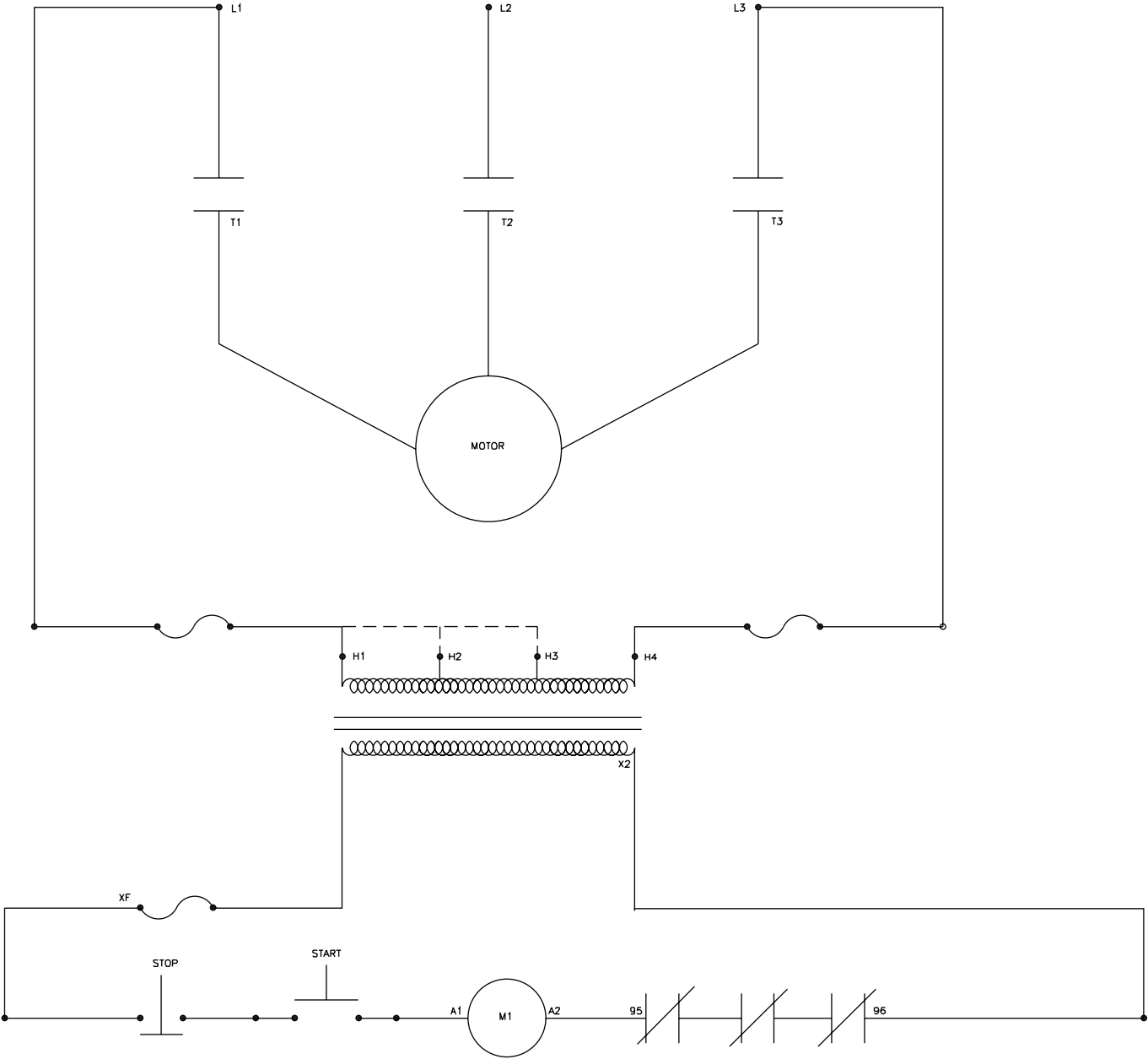
CONTROL BOX ASSEMBLY (CX-0057 OPTION) (460 VOLT)



CW-A-0002-060899-RD

CONTROL BOX ASSEMBLY (CX-0057 OPTION) (460 VOLT)							
REF #	DESCRIPTION	PART #	QTY	REF #	DESCRIPTION	PART #	QTY
1	Plug	32-0146	1	14	Fuse- 600V	32-0325	2
2	Tag- Warning: Risk of Electrocutio	34-1035	1	15	Fuse- 125V	32-0323	1
3	Cable Tie	33-0022	1	16	Overload Relay	32-0483	1
4	Cord *(Ten Feet Required)	32-0023	1	17	Contacto	32-0597	1
5	Cord Strain Relief	9-0046	1	18	Conduit	32-0487	2
6	Switch- Red	32-0306	1	19	Din Rail *(One Foot Required)	32-0316	1
7	Switch- Green	32-0305	1	20	Control Box	32-0455	1
8	Locknut	30-8152	6	21	Wire- Black *(Six Feet Required)	32-0501	1
9	Bolt (See 32-0455)	N/A Sep.	4	22	Wire- Green *(Two Feet Required)	32-0622	1
10	Panel	32-0456	1	23	Conduit *(One Foot Required)	32-0486	1
11	Transformer	32-0313	1	24	Washer	32-0648	2
12	Washer	28-0010	6	*Must Order in One Foot Lengths			
13	Bolt	27-8927	6				

WIRING SCHEMATIC (460 VOLT)



CW-WD-0001-112700-RD

WIRING DIAGRAM (460 VOLT)

