



Mi-T-M® CORPORATION ■ Peosta, IA 52068

ILLUSTRATED PARTS LISTING

FOR PRESSURE WASHER MODEL(S):

CW-2205-0MB0

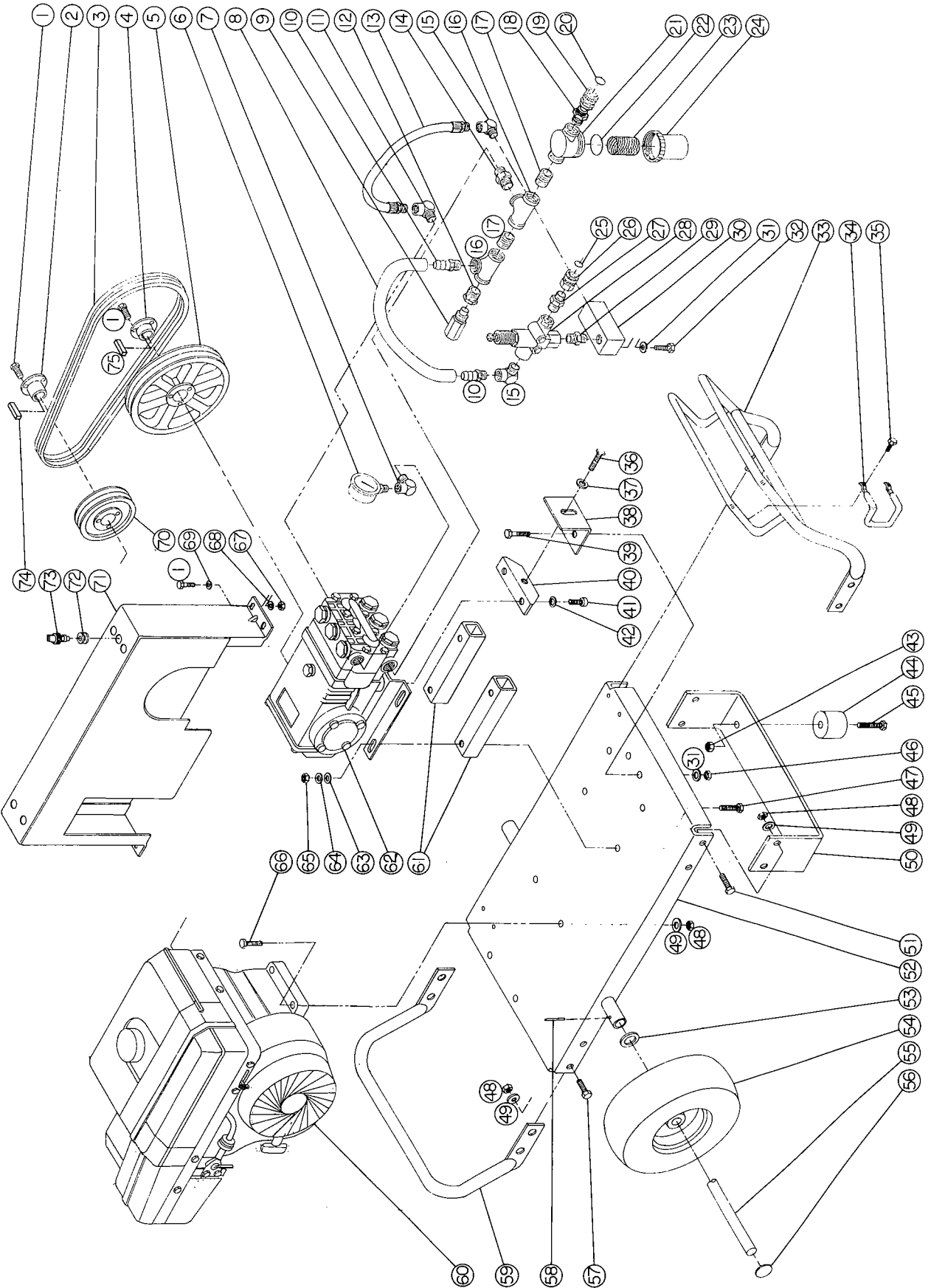
(SERIAL #000001-)

CW-2205-0MB0 PARTS LISTING KEY	
PUMP PART#:	3-0008
GEAR REDUCTION PART#:	NA
UNLOADER PART #:	8-0031
GUN/WAND ASSEMBLY PART #:	851-0095
GUN PART #:	16-0001

SPECIFICATIONS:

MAXIMUM PRESSURE 2200 PSI
 MAXIMUM FLOW 4.5 GPM
 NOZZLE SIZE #6
 PUMP OIL CAPACITY 33.8 OZ.
 PUMP OIL GRADE SAE #30W NON-DET
 ENGINE OIL CAPACITY 40 OZ.
 ENGINE OIL GRADE #30-SE-SC-SF-SD
 FUEL TANK CAPACITY 160 OZ.
 RECOMMENDED FUEL LEAD FREE

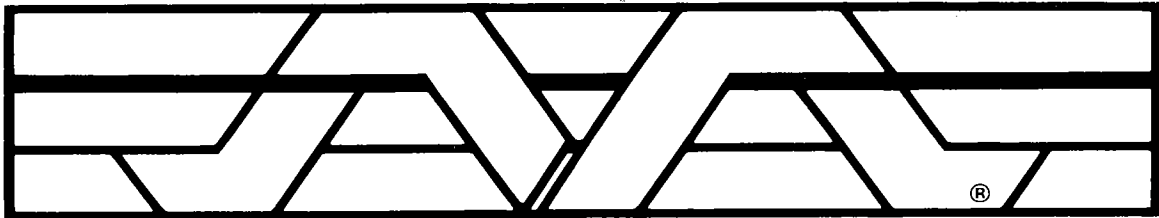
MODEL CW-2205-0MB0 (OLD)



CW-220

MB0 (OLD)

Ref. No.	Description	Part No.	Ref. No.	Description	Part No.
1	Bolt.....	27-0015	46	Hex nut.....	30-0006
2	Bushing engine shaft.....	9-0005	47	Bolt.....	27-0173
3	Belts.....	11-0005	48	Hex nut.....	30-0004
4	Bushing pump shaft.....	9-0017	49	Lockwasher.....	29-0007
5	Sheave-pump.....	10-0037	50	Underbracket.....	13-0042
6	Pressure gauge.....	22-0007	51	Bolt.....	27-0067
7	Elbow.....	24-0004	52	Base plate.....	5-0005
8	Bypass hose.....	15-0035	53	Flatwasher.....	28-0008
9	Heat dump valve.....	22-0005	54	Wheel.....	14-0006
10	Hose barb.....	23-0007	55	Axle.....	20-0007
11	Elbow.....	24-0005	56	Hub cap.....	33-0018
12	Hex bushing.....	23-0023	57	Bolt.....	27-0066
13	Hose assembly.....	15-0024	58	Roll pin.....	43-0002
14	Hex nipple.....	23-0012	59	Rear handle.....	7-0011
15	Elbow.....	24-0006	60	Engine-9 H.P. Briggs & Stratton Vanguard.....	1-0054
16	Tee-all female.....	23-0009	61	Pump mounts.....	13-0028
17	Close nipple.....	23-0003	62	Pump complete.....	3-0008
18	Hex nipple.....	23-0026	63	Flatwasher.....	28-0005
19	Garden hose swivel.....	23-0021	64	Lockwasher.....	29-0009
20	Garden hose gasket.....	26-0001	65	Hex nut.....	30-0008
21	Strainer cap.....	19-0024	66	Bolt.....	27-0070
22	Strainer gasket.....	26-0072		Bolt (through angle).....	27-0072
23	Stainless steel screen.....	19-0015	67	Hex nut.....	30-0002
24	Strainer bowl.....	19-0025	68	Lockwasher.....	29-0006
	Strainer complete (includes items 21-24).....	19-0004	69	Flatwasher.....	28-0002
25	O-ring.....	25-0123	70	Sheave-engine.....	10-0029
26	Quick connect socket.....	17-0004	71	Beltguard.....	6-0001
27	Hex nipple.....	23-0018	72	Grommet.....	33-0001
28	Unloader valve complete.....	8-0031	73	Nozzle, 0006.....	18-0013
29	Hex nipple.....	24-0031	73	Nozzle, 1506.....	18-0014
30	Manifold block.....	51-0001	73	Nozzle, 2506.....	18-0043
31	Lockwasher.....	29-0008	73	Nozzle, 4006.....	18-0044
32	Bolt.....	27-0116	74	Key motor shaft.....	43-0039
33	Front handle.....	7-0010	75	Key pump shaft.....	43-0048
34	Wand holder.....	20-0181			
35	Hex washer head screw.....	27-3061			
36	Bolt-full thread.....	27-0576			
37	Flatwasher.....	28-0023			
38	Tightner angle plate.....	13-0003			
39	Bolt.....	27-0117			
40	Pump tightener bracket with nut.....	13-0050			
41	Screw.....	27-8471			
42	Washer.....	29-0055			
43	Hex locknut.....	30-0157			
44	Isolator.....	14-0008			
45	Bolt.....	27-0068			



Mi-T-M[®] CORPORATION