



***Performance Under Pressure***

PARTS LIST FOR  
***CW-1003-SME1***  
***CW-2004-SME1***  
(AFTER SERIAL #10375000)

Motor Horsepower:	
CW-1003-SME1:	2.0 H.P.
CW-2004-SME1:	6.0 H.P.
Pump Oil Grade:	Mi-T-M Pump Oil #AW-4085-0016
Pump Oil Capacity:	41 oz.
Nozzle Size:	
CW-1003-SME1:	5.0
CW-2004-SME1:	5.5

This Parts Listing has been compiled for your benefit. You can be assured your Mi-T-M Cold Water Pressure Washer was constructed and designed with quality and performance in mind using over 25 years experience in the pressure washer business. Each component has been rigorously tested to insure the highest level of acceptance.

The contents of this Parts Listing are based on the latest product information available at the time of publication. Mi-T-M reserves the right to make changes in price, color, materials, equipment, specifications or models at any time without notice.

**WARNING**

THIS IS A PROFESSIONAL HIGH PRESSURE, COLD WATER PRESSURE WASHER. CAUTION SHOULD BE OBSERVED WHEN USING OR REPAIRING THIS UNIT! READ AND FOLLOW THE SAFETY WARNINGS LISTED BELOW BEFORE ATTEMPTING ANY REPAIRS ON THIS PRESSURE WASHER!

**SAFETY WARNINGS**

1. NEVER alter or modify the equipment. Be sure any accessory items and system components being used will withstand the pressure developed. Use only genuine Mi-T-M parts for repair of your pressure washer. Failure to do so can cause hazardous operating conditions and will VOID warranty.
2. NEVER make adjustments on machinery while the unit is connected to the engine without first removing the ignition cable from the spark plug. Turning over the machinery by hand during adjustment or cleaning might start the engine and machinery with it, causing serious injury to the operator.
3. Know how to stop and bleed pressures quickly. Be thoroughly familiar with controls.
4. Before servicing the unit, turn unit off, relieve the water pressure and allow the unit to cool down. Do not make repairs while the unit is running. Service in a clean, dry, flat area. Block the wheels to prevent the unit from moving. Be especially careful to properly dispose of any flammable materials.
5. After testing the machine, DO NOT leave the pressurized unit unattended. Shut off the unit and release trapped pressure before leaving.

**Table of Contents**

**SPECIFICATIONS.....3**

**FRAME ASSEMBLY FOR CW-1003-SME1 (AFTER SERIAL #10165216) .....4**

**FRAME ASSEMBLY FOR CW-1003-SME1 (AFTER SERIAL #10165216) .....6**

**FRAME ASSEMBLY FOR CW-2004-SME1 (AFTER SERIAL #10165216) .....8**

**FRAME ASSEMBLY FOR CW-2004-SME1 (AFTER SERIAL #10165216) .....10**

**ELECTRIC BOX ASSEMBLY.....12**

**ELECTRIC BOX ASSEMBLY.....14**

**PUMP ASSEMBLY (3-0202 AND 3-0203) (After Serial #10375000) .....16**

**DUAL LANCE ASSEMBLY (16-0416) .....18**

**DETERGENT INJECTOR (AW-8300-0000) .....20**

**WIRING SCHEMATIC .....21**

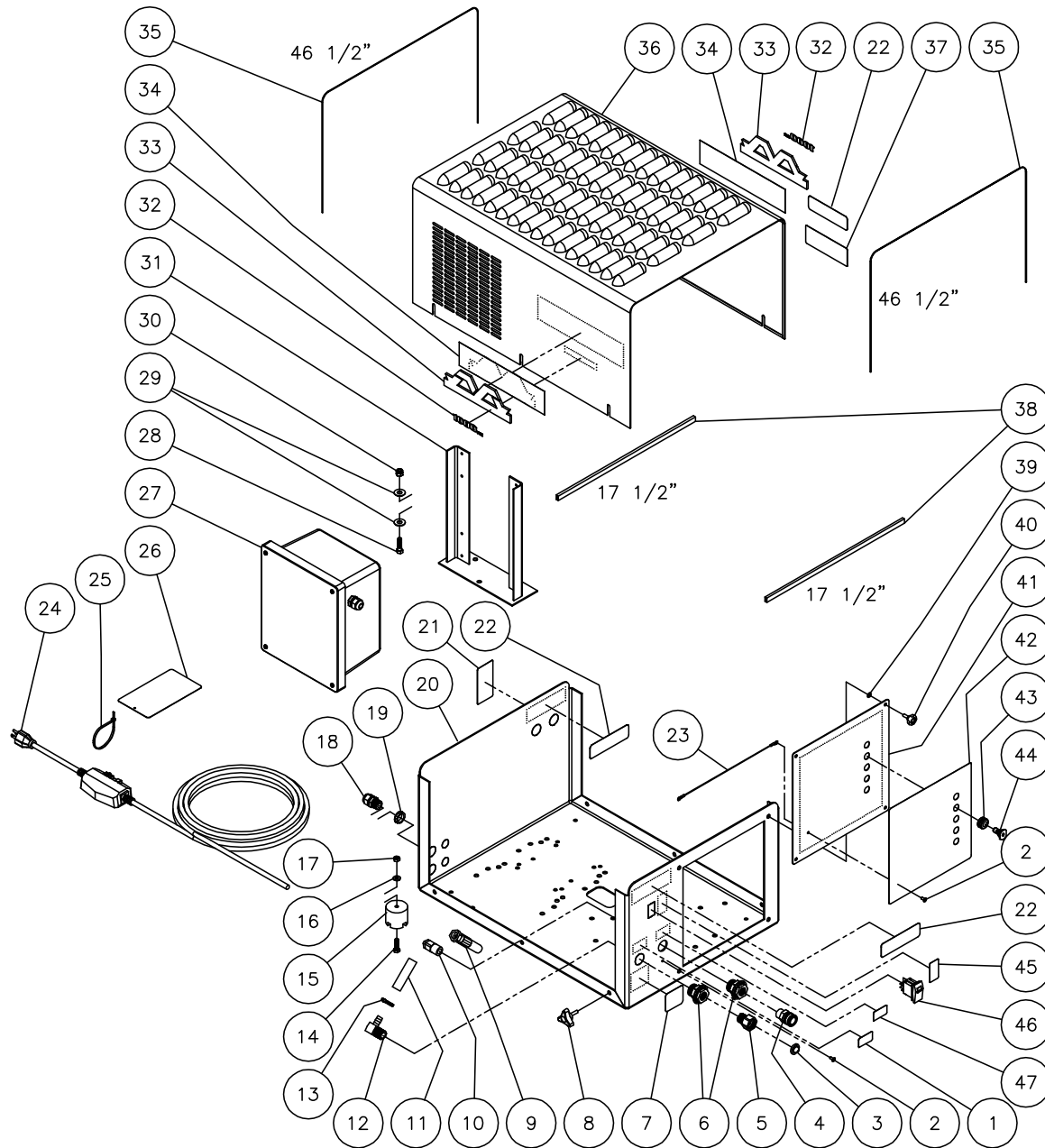
**WIRING DIAGRAM.....22**

**NOTES .....23**

## SPECIFICATIONS

MODEL NUMBER	CW-1003-SME1	CW-2004-SME1
Operating Pressure (PSI/Bar):	1000/68.9	2000/137.9
High Pressure Nozzle:	5.0	5.5
Water Volume (GPM/lpm):	2.5/9.5	3.9/14.5
Motor:	Open drip proof, manual reset thermal overload protection, 40ft. power supply cord w/ Ground Fault Circuit Interrupter (GFCI)	Totally enclosed fan cooled, manual reset thermal overload protection, 40ft. power supply cord w/ Ground Fault Circuit Interrupter (GFCI)
Horsepower	2.0	6.0
Voltage	120	230
RPM	1725	
Phase	Single	
Amps	18.8	24.1
Pump:	Belt Driven, Oil Bath, Triplex Piston	
Oil Type	Mi-T-M Pump Oil #AW-4085-0016	
Oil Capacity (oz./liters)	41/1.2	
Plungers	Ceramic	
Manifold	Forged Brass	
Valves	Stainless Steel	
Unloader	Pre-Set at the factory	
Thermal Relief Valve	Relieves heated water during unloader bypass stage	
Detergent Injector	Adjustable low pressure down stream from pump	
Unit Net Dimension (in/cm)	29.5Lx20.5Wx15H/75Lx52Wx38H	
Unit Shipping Dimension (in/cm)	48Lx30Wx34H/122Lx76Wx86H	

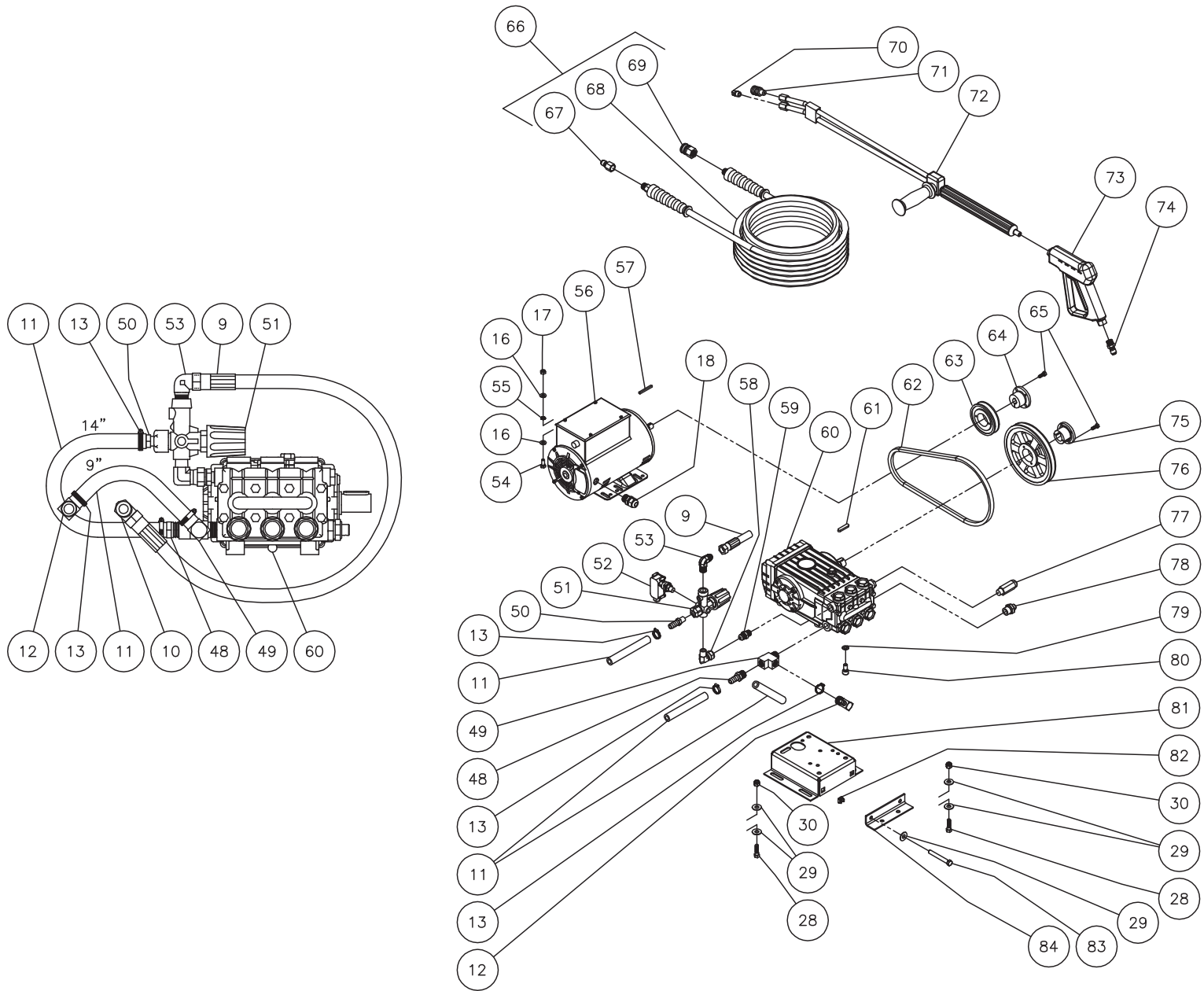
# FRAME ASSEMBLY FOR CW-1003-SME1 (AFTER SERIAL #10165216)



CW-1003-SME1-060805-DLG

FRAME ASSEMBLY FOR CW-1003-SME1 (AFTER SERIAL #10165216)											
REF #	DESCRIPTION	PART #	QTY	REF #	DESCRIPTION	PART #	QTY	REF #	DESCRIPTION	PART #	QTY
1	Decal- Inlet (See 34-9027)	N/A Sep.	1	31	Electric Box Bracket	13-0140A01	1	58	Elbow	24-0046	1
2	Rivet	53-0009	2	32	Decal- Die Cut 1000	34-1459	2	59	Nipple	24-0002	1
3	Inlet Washer Filter w/Screen	19-0001	1	33	Decal- Mi-T-M Logo	62-0120	2	60	Pump	3-0203	1
4	Quick Connect Socket	17-0029	1	34	Decal- Mi-T-M Stripe	34-0972	2	61	Pump Key	43-0048	1
5	Garden Hose	23-0095	1	35	Edging *(Eight Feet Required)	33-0423	1	62	Belt	11-0004	1
6	Tank Adapter	23-0365	2	36	Top Cover	21-0195	1	63	Sheave	10-0049	1
7	Decal- Warning: Backflow (See 34-9027)	N/A Sep.	1	37	Decal- Caution: Hot Discharge Fluid (See 34-9027)	N/A Sep.	1	64	Bushing	9-0037	1
8	Three Prong Knob	7-0168	6	38	Edging *(Fourteen Feet Required)	33-0020	1	65	Bolt	27-0015	4
9	Hose	15-0221	1	39	Retaining Washer	28-1045	4	66	High Pressure Hose Assembly (Inc. 67-69)	851-0262	1
10	Elbow	24-0074	1	40	Screw Cover	62-0057	4	67	Quick Connect Plug	17-0006	1
11	Bypass Inlet Hose *(Two Feet Required)	15-0007	1	41	Front Panel	21-0194	1	68	Hose	15-0146	1
12	Elbow	23-0418	2	42	Decal- Control Panel (See 34-9027)	N/A Sep.	1	69	Quick Connect Socket	17-0004	1
13	Worm Clamp	42-0011	4	43	Grommet	33-0002	5	70	Nozzle- 4060	18-0110	1
14	Bolt	27-5024	4	44	Nozzle- 0005	18-0003	1	71	Quick Connect Socket	17-0028	1
15	Isolator	14-0008	4	-	Nozzle- 1505	18-0004	1	72	Dual Lance	16-0416	1
16	Washer	28-0122	12	-	Nozzle- 2505	18-0153	1	73	Trigger Gun	16-0001	1
17	Locknut	30-5158	8	-	Nozzle- 4005	18-0180	1	74	Quick Connect Plug	17-0005	1
18	Strain Relief	32-0437	2	45	Decal- ON/OFF (See 34-9027)	N/A Sep.	1	75	Bushing	9-0017	1
19	Locknut	32-0108	1	46	ON/OFF Switch	32-0801	1	76	Sheave	10-0066	1
20	Frame	21-0193	1	47	Decal- Outlet (See 34-9027)	N/A Sep.	1	77	Safety Relief Valve	22-0376	1
21	Decal- Data Plate	N/A	1	48	Hose Barb	23-0045	1	78	Thermal Relief Valve	22-0371	1
22	Decal- Warning: Risk of Injury (See 34-9027)	N/A Sep.	3	49	Street Tee	23-0124	1	79	Lockwasher	29-0055	4
23	Lanyard	33-0424	1	50	Hose Barb	23-0120	1	80	Screw	27-8471	4
24	Cord w/GFCI	32-0215	1	51	Unloader Assembly	8-0361	1	81	Pump Hat	5-0153A18	1
25	Cable Tie	33-0022	1	52	Pressure Switch	22-0171	1	82	Clip Nut	30-6025	2
26	Hang Tag- Warning: Risk of Electrocution	34-1035	1	53	Elbow	24-0092	1	83	Bolt	27-0576	2
27	Electric Box Assembly	N/A	1	54	Screw	27-5066	4	84	Tension Bracket	20-0584A18	1
28	Bolt	27-9563	9	55	Lockwasher	29-0154	4		Decal Kit (Inc. 1, 7, 22, 37, 42, 45, 47)	34-9027	
29	Flatwasher	28-0123	20	56	Motor- 2.0 H.P.	2-0119	1	*Must Order in Foot Lengths			
30	Locknut	30-5159	9	57	Key	43-0078	1				

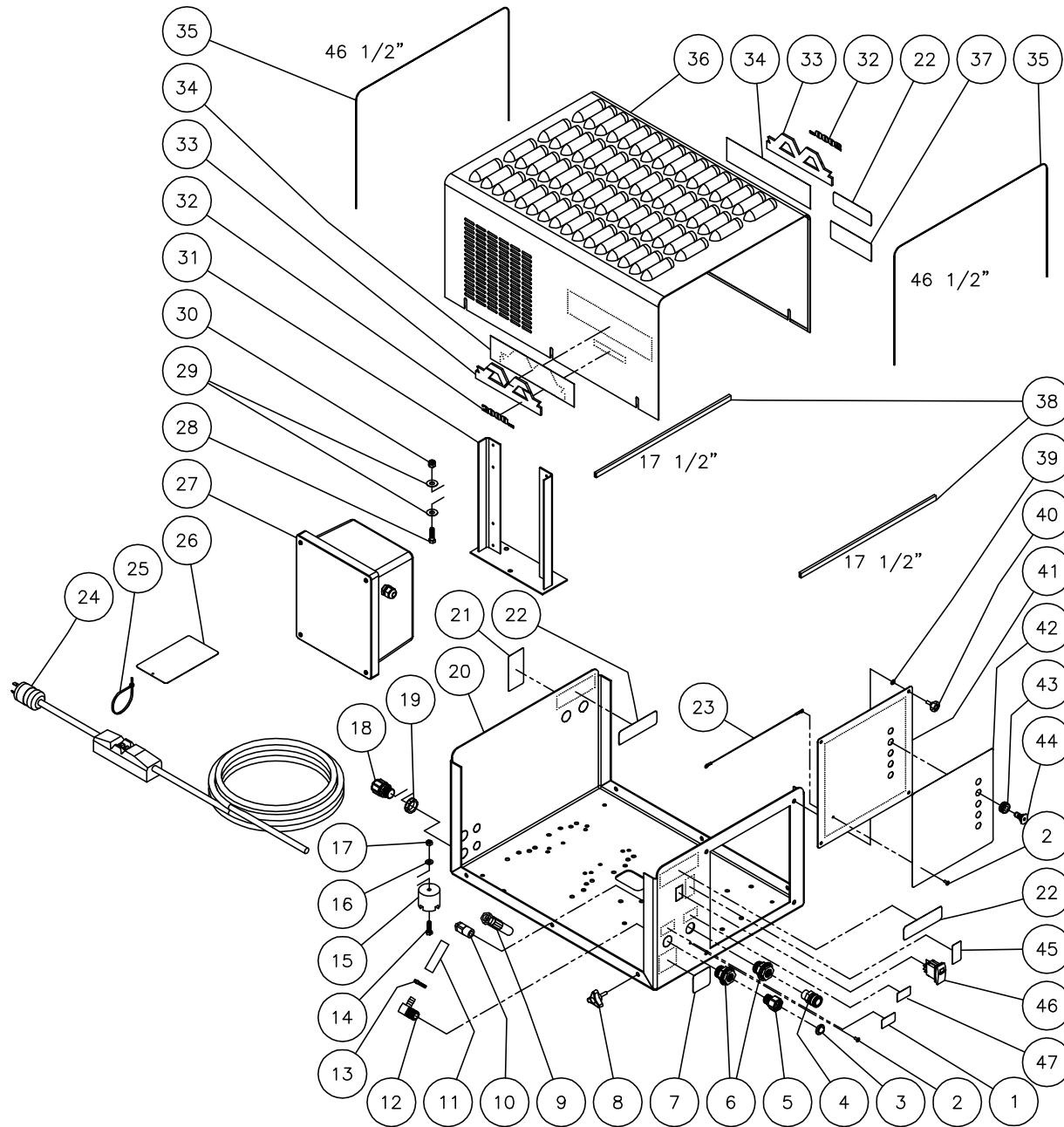
# FRAME ASSEMBLY FOR CW-1003-SME1 (AFTER SERIAL #10165216)



CW-1003-SME1-060805-DLG

FRAME ASSEMBLY FOR CW-1003-SME1 (AFTER SERIAL #10165216)											
REF #	DESCRIPTION	PART #	QTY	REF #	DESCRIPTION	PART #	QTY	REF #	DESCRIPTION	PART #	QTY
1	Decal- Inlet (See 34-9027)	N/A Sep.	1	31	Electric Box Bracket	13-0140A01	1	58	Elbow	24-0046	1
2	Rivet	53-0009	2	32	Decal- Die Cut 1000	34-1459	2	59	Nipple	24-0002	1
3	Inlet Washer Filter w/Screen	19-0001	1	33	Decal- Mi-T-M Logo	62-0120	2	60	Pump	3-0203	1
4	Quick Connect Socket	17-0029	1	34	Decal- Mi-T-M Stripe	34-0972	2	61	Pump Key	43-0048	1
5	Garden Hose	23-0095	1	35	Edging *(Eight Feet Required)	33-0423	1	62	Belt	11-0004	1
6	Tank Adapter	23-0365	2	36	Top Cover	21-0195	1	63	Sheave	10-0049	1
7	Decal- Warning: Backflow (See 34-9027)	N/A Sep.	1	37	Decal- Caution: Hot Discharge Fluid (See 34-9027)	N/A Sep.	1	64	Bushing	9-0037	1
8	Three Prong Knob	7-0168	6	38	Edging *(Fourteen Feet Required)	33-0020	1	65	Bolt	27-0015	4
9	Hose	15-0221	1	39	Retaining Washer	28-1045	4	66	High Pressure Hose Assembly (Inc. 67-69)	851-0262	1
10	Elbow	24-0074	1	40	Screw Cover	62-0057	4	67	Quick Connect Plug	17-0006	1
11	Bypass Inlet Hose *(Two Feet Required)	15-0007	1	41	Front Panel	21-0194	1	68	Hose	15-0146	1
12	Elbow	23-0418	2	42	Decal- Control Panel (See 34-9027)	N/A Sep.	1	69	Quick Connect Socket	17-0004	1
13	Worm Clamp	42-0011	4	43	Grommet	33-0002	5	70	Nozzle- 4060	18-0110	1
14	Bolt	27-5024	4	44	Nozzle- 0005	18-0003	1	71	Quick Connect Socket	17-0028	1
15	Isolator	14-0008	4	-	Nozzle- 1505	18-0004	1	72	Dual Lance	16-0416	1
16	Washer	28-0122	12	-	Nozzle- 2505	18-0153	1	73	Trigger Gun	16-0001	1
17	Locknut	30-5158	8	-	Nozzle- 4005	18-0180	1	74	Quick Connect Plug	17-0005	1
18	Strain Relief	32-0437	2	45	Decal- ON/OFF (See 34-9027)	N/A Sep.	1	75	Bushing	9-0017	1
19	Locknut	32-0108	1	46	ON/OFF Switch	32-0801	1	76	Sheave	10-0066	1
20	Frame	21-0193	1	47	Decal- Outlet (See 34-9027)	N/A Sep.	1	77	Safety Relief Valve	22-0376	1
21	Decal- Data Plate	N/A	1	48	Hose Barb	23-0045	1	78	Thermal Relief Valve	22-0371	1
22	Decal- Warning: Risk of Injury (See 34-9027)	N/A Sep.	3	49	Street Tee	23-0124	1	79	Lockwasher	29-0055	4
23	Lanyard	33-0424	1	50	Hose Barb	23-0120	1	80	Screw	27-8471	4
24	Cord w/GFCI	32-0215	1	51	Unloader Assembly	8-0361	1	81	Pump Hat	5-0153A18	1
25	Cable Tie	33-0022	1	52	Pressure Switch	22-0171	1	82	Clip Nut	30-6025	2
26	Hang Tag- Warning: Risk of Electrocution	34-1035	1	53	Elbow	24-0092	1	83	Bolt	27-0576	2
27	Electric Box Assembly	N/A	1	54	Screw	27-5066	4	84	Tension Bracket	20-0584A18	1
28	Bolt	27-9563	9	55	Lockwasher	29-0154	4		Decal Kit (Inc. 1, 7, 22, 37, 42, 45, 47)	34-9027	
29	Flatwasher	28-0123	20	56	Motor- 2.0 H.P.	2-0119	1	*Must Order in Foot Lengths			
30	Locknut	30-5159	9	57	Key	43-0078	1				

# FRAME ASSEMBLY FOR CW-2004-SME1 (AFTER SERIAL #10165216)



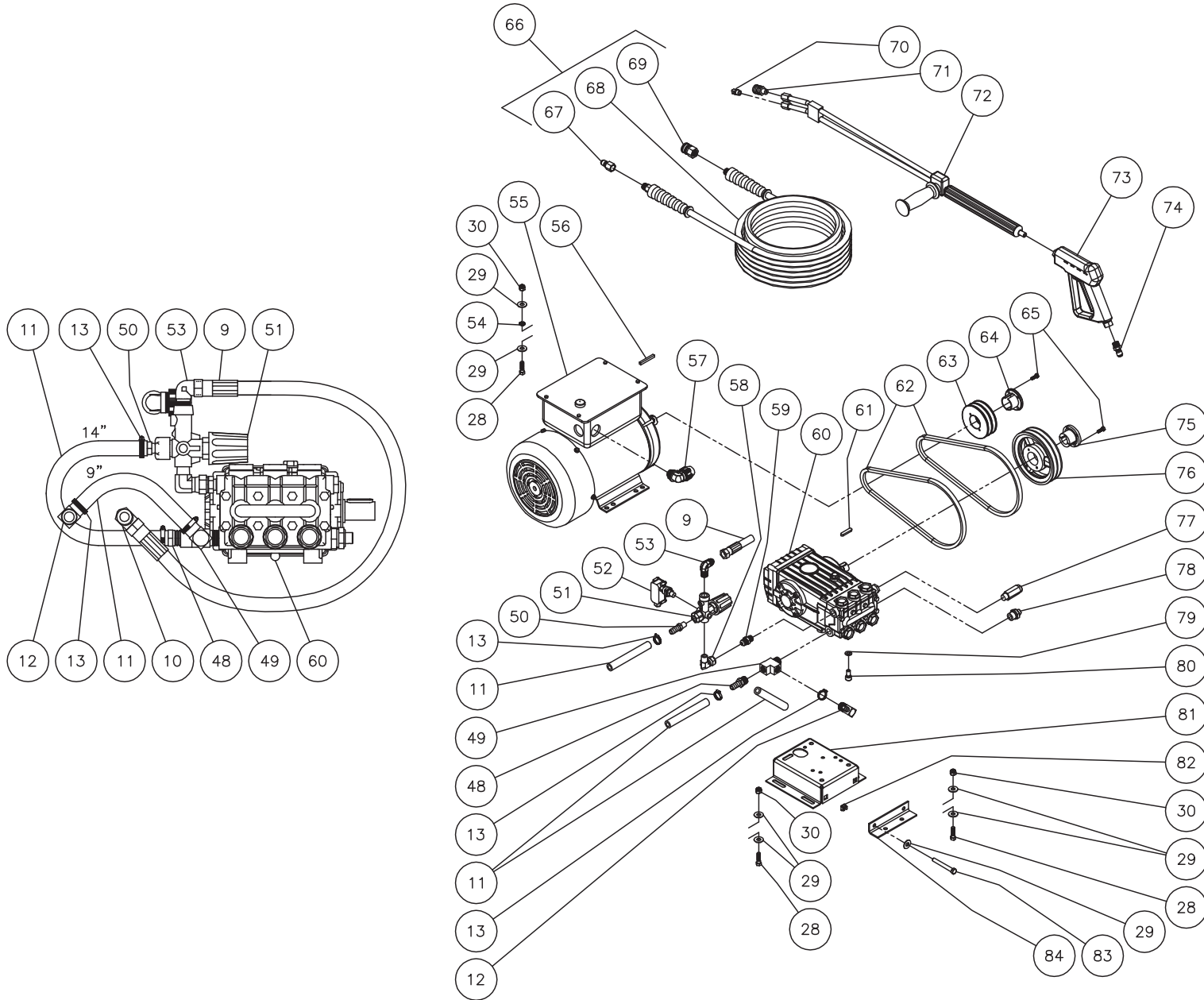
CW-2004-SME1-060805-DLG



## FRAME ASSEMBLY FOR CW-2004-SME1 (AFTER SERIAL #10165216)

REF #	DESCRIPTION	PART #	QTY	REF #	DESCRIPTION	PART #	QTY	REF #	DESCRIPTION	PART #	QTY
1	Decal- Inlet (See 34-9027)	N/A Sep.	1	31	Electric Box Bracket	13-0140A01	1	58	Elbow	24-0046	1
2	Rivet	53-0009	2	32	Decal- Die Cut 2000	34-0771	2	59	Nipple	24-0002	1
3	Inlet Washer Filter w/Screen	19-0001	1	33	Decal- Mi-T-M Logo	62-0120	2	60	Pump	3-0202	1
4	Quick Connect Socket	17-0029	1	34	Decal- Mi-T-M Stripe	34-0972	2	61	Pump Key	43-0048	1
5	Garden Hose	23-0095	1	35	Edging *(Eight Feet Required)	33-0423	1	62	Belt	11-0031	2
6	Tank Adapter	23-0365	2	36	Top Cover	21-0195	1	63	Sheave	10-0067	1
7	Decal- Warning: Backflow (See 34-9027)	N/A Sep.	1	37	Decal- Caution: Hot Discharge Fluid (See 34-9027)	N/A Sep.	1	64	Bushing	9-0010	1
8	Three Prong Knob	7-0168	6	38	Edging *(Fourteen Feet Required)	33-0020	1	65	Bolt	27-0015	4
9	Hose	15-0221	1	39	Retaining Washer	28-1045	4	66	High Pressure Hose Assembly (Inc. 67-69)	851-0262	1
10	Elbow	24-0074	1	40	Screw Cover	62-0057	4	67	Quick Connect Plug	17-0006	1
11	Bypass Inlet Hose *(Two Feet Required)	15-0007	1	41	Front Panel	21-0194	1	68	Hose	15-0146	1
12	Elbow	23-0418	2	42	Decal- Control Panel (See 34-9027)	N/A Sep.	1	69	Quick Connect Socket	17-0004	1
13	Worm Clamp	42-0011	4	43	Grommet	33-0002	5	70	Nozzle- 4060	18-0110	1
14	Bolt	27-5024	4	44	Nozzle- 0005.5	18-0035	1	71	Quick Connect Socket	17-0028	1
15	Isolator	14-0008	4	-	Nozzle- 1505.5	18-0041	1	72	Dual Lance	16-0416	1
16	Washer	28-0122	4	-	Nozzle- 2505.5	18-0062	1	73	Trigger Gun	16-0001	1
17	Locknut	30-5158	4	-	Nozzle- 4005.5	18-0132	1	74	Quick Connect Plug	17-0005	1
18	Cord Relief	9-0046	1	45	Decal- ON/OFF (See 34-9027)	N/A Sep.	1	75	Bushing	9-0017	1
19	Locknut	32-0292	1	46	ON/OFF Switch	32-0801	1	76	Sheave	10-0104	1
20	Frame	21-0193	1	47	Decal- Outlet (See 34-9027)	N/A Sep.	1	77	Safety Relief Valve	22-0376	1
21	Decal- Data Plate	N/A	1	48	Hose Barb	23-0045	1	78	Thermal Relief Valve	22-0371	1
22	Decal- Warning: Risk of Injury (See 34-9027)	N/A Sep.	3	49	Street Tee	23-0124	1	79	Lockwasher	29-0055	4
23	Lanyard	33-0424	1	50	Hose Barb	23-0120	1	80	Screw	27-8471	4
24	Cord w/GFCI	32-0334	1	51	Unloader Assembly	8-0361	1	81	Pump Hat	5-0153A18	1
25	Cable Tie	33-0022	1	52	Pressure Switch	22-0171	1	82	Clip Nut	30-6025	2
26	Hang Tag- Warning: Risk of Electrocutation	34-1035	1	53	Elbow	24-0092	1	83	Bolt	27-0576	2
27	Electric Box Assembly	N/A	1	54	Lockwasher	29-0155	4	84	Tension Bracket	20-0584A18	1
28	Bolt	27-9563	13	55	Motor- 6.0 H.P.	2-0141	1		Decal Kit (Inc. 1, 7, 22, 41, 44, 46)	34-9027	
29	Flatwasher	28-0123	28	56	Key	43-0078	1		*Must Order in Foot Lengths		
30	Locknut	30-5159	13	57	Conduit Elbow	32-0254	1				

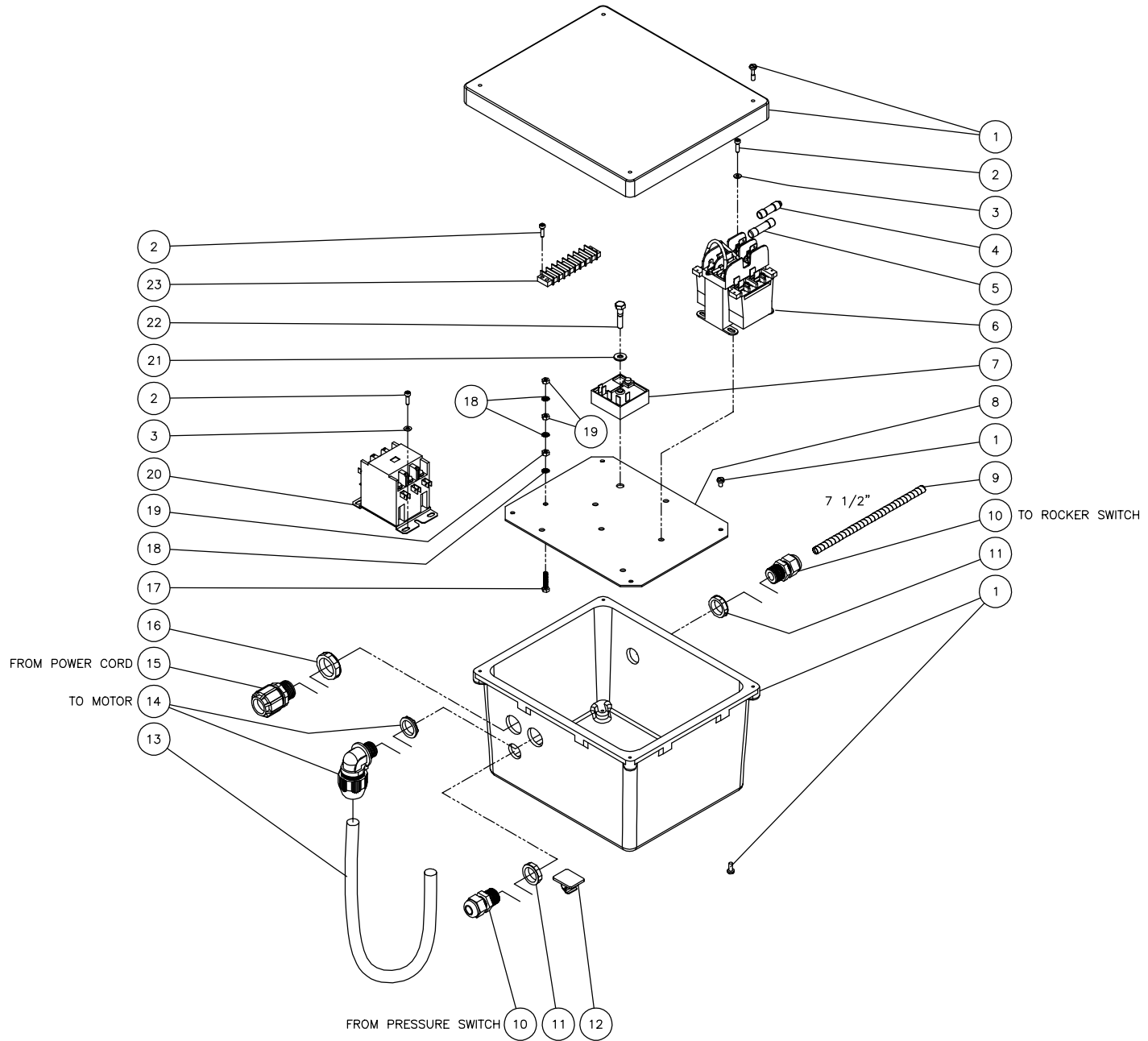
# FRAME ASSEMBLY FOR CW-2004-SME1 (AFTER SERIAL #10165216)



CW-2004-SME1-060805-DLG

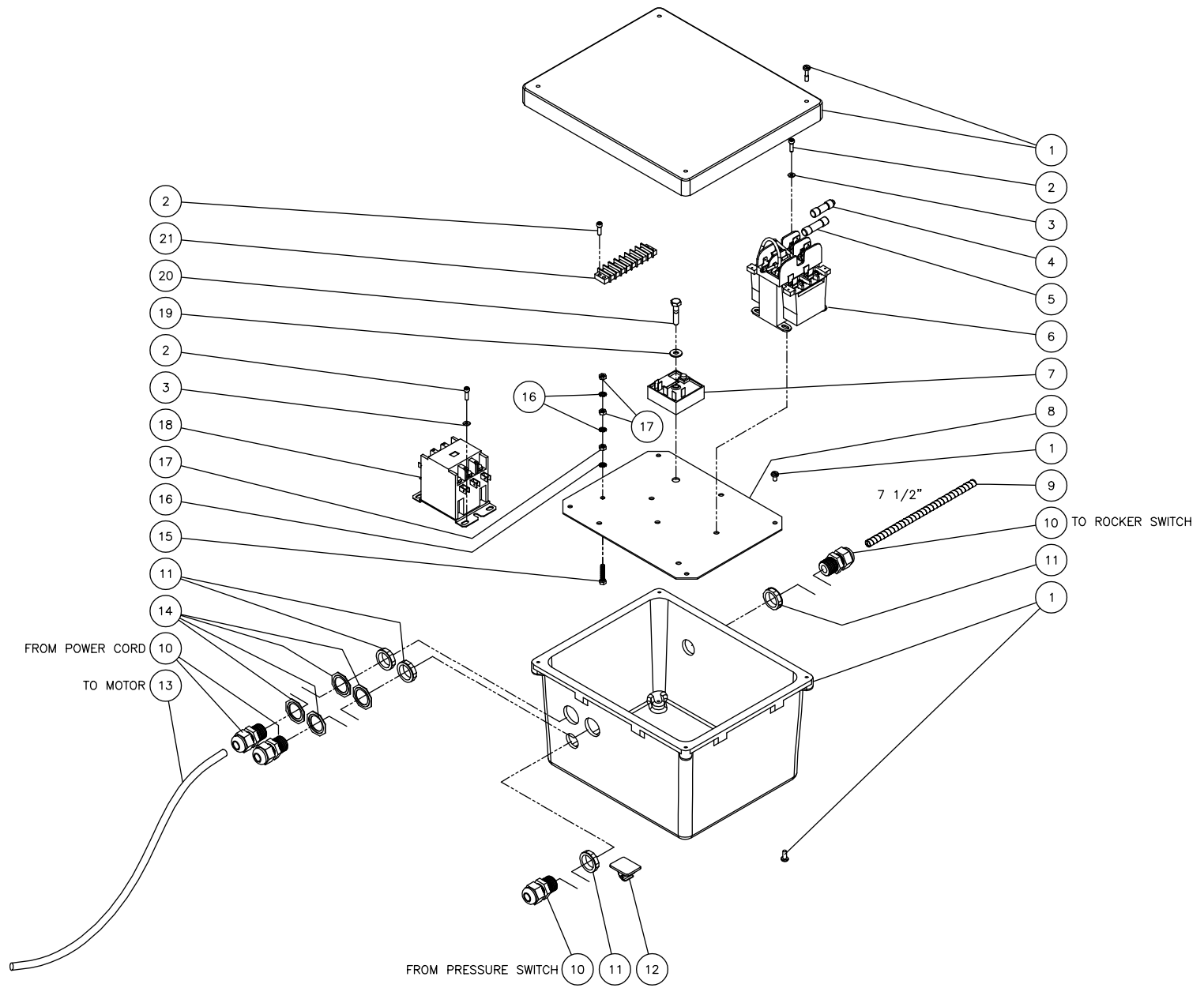
FRAME ASSEMBLY FOR CW-2004-SME1 (AFTER SERIAL #10165216)											
REF #	DESCRIPTION	PART #	QTY	REF #	DESCRIPTION	PART #	QTY	REF #	DESCRIPTION	PART #	QTY
1	Decal- Inlet (See 34-9027)	N/A Sep.	1	31	Electric Box Bracket	13-0140A01	1	58	Elbow	24-0046	1
2	Rivet	53-0009	2	32	Decal- Die Cut 2000	34-0771	2	59	Nipple	24-0002	1
3	Inlet Washer Filter w/Screen	19-0001	1	33	Decal- Mi-T-M Logo	62-0120	2	60	Pump	3-0202	1
4	Quick Connect Socket	17-0029	1	34	Decal- Mi-T-M Stripe	34-0972	2	61	Pump Key	43-0048	1
5	Garden Hose	23-0095	1	35	Edging *(Eight Feet Required)	33-0423	1	62	Belt	11-0031	2
6	Tank Adapter	23-0365	2	36	Top Cover	21-0195	1	63	Sheave	10-0067	1
7	Decal- Warning: Backflow (See 34-9027)	N/A Sep.	1	37	Decal- Caution: Hot Discharge Fluid (See 34-9027)	N/A Sep.	1	64	Bushing	9-0010	1
8	Three Prong Knob	7-0168	6	38	Edging *(Fourteen Feet Required)	33-0020	1	65	Bolt	27-0015	4
9	Hose	15-0221	1	39	Retaining Washer	28-1045	4	66	High Pressure Hose Assembly (Inc. 67-69)	851-0262	1
10	Elbow	24-0074	1	40	Screw Cover	62-0057	4	67	Quick Connect Plug	17-0006	1
11	Bypass Inlet Hose *(Two Feet Required)	15-0007	1	41	Front Panel	21-0194	1	68	Hose	15-0146	1
12	Elbow	23-0418	2	42	Decal- Control Panel (See 34-9027)	N/A Sep.	1	69	Quick Connect Socket	17-0004	1
13	Worm Clamp	42-0011	4	43	Grommet	33-0002	5	70	Nozzle- 4060	18-0110	1
14	Bolt	27-5024	4	44	Nozzle- 0005.5	18-0035	1	71	Quick Connect Socket	17-0028	1
15	Isolator	14-0008	4	-	Nozzle- 1505.5	18-0041	1	72	Dual Lance	16-0416	1
16	Washer	28-0122	4	-	Nozzle- 2505.5	18-0062	1	73	Trigger Gun	16-0001	1
17	Locknut	30-5158	4	-	Nozzle- 4005.5	18-0132	1	74	Quick Connect Plug	17-0005	1
18	Cord Relief	9-0046	1	45	Decal- ON/OFF (See 34-9027)	N/A Sep.	1	75	Bushing	9-0017	1
19	Locknut	32-0292	1	46	ON/OFF Switch	32-0801	1	76	Sheave	10-0104	1
20	Frame	21-0193	1	47	Decal- Outlet (See 34-9027)	N/A Sep.	1	77	Safety Relief Valve	22-0376	1
21	Decal- Data Plate	N/A	1	48	Hose Barb	23-0045	1	78	Thermal Relief Valve	22-0371	1
22	Decal- Warning: Risk of Injury (See 34-9027)	N/A Sep.	3	49	Street Tee	23-0124	1	79	Lockwasher	29-0055	4
23	Lanyard	33-0424	1	50	Hose Barb	23-0120	1	80	Screw	27-8471	4
24	Cord w/GFCI	32-0334	1	51	Unloader Assembly	8-0361	1	81	Pump Hat	5-0153A18	1
25	Cable Tie	33-0022	1	52	Pressure Switch	22-0171	1	82	Clip Nut	30-6025	2
26	Hang Tag- Warning: Risk of Electrocutation	34-1035	1	53	Elbow	24-0092	1	83	Bolt	27-0576	2
27	Electric Box Assembly	N/A	1	54	Lockwasher	29-0155	4	84	Tension Bracket	20-0584A18	1
28	Bolt	27-9563	13	55	Motor- 6.0 H.P.	2-0141	1		Decal Kit (Inc. 1, 7, 22, 41, 44, 46)	34-9027	
29	Flatwasher	28-0123	28	56	Key	43-0078	1	*Must Order in Foot Lengths			
30	Locknut	30-5159	13	57	Conduit Elbow	32-0254	1				

# ELECTRIC BOX ASSEMBLY



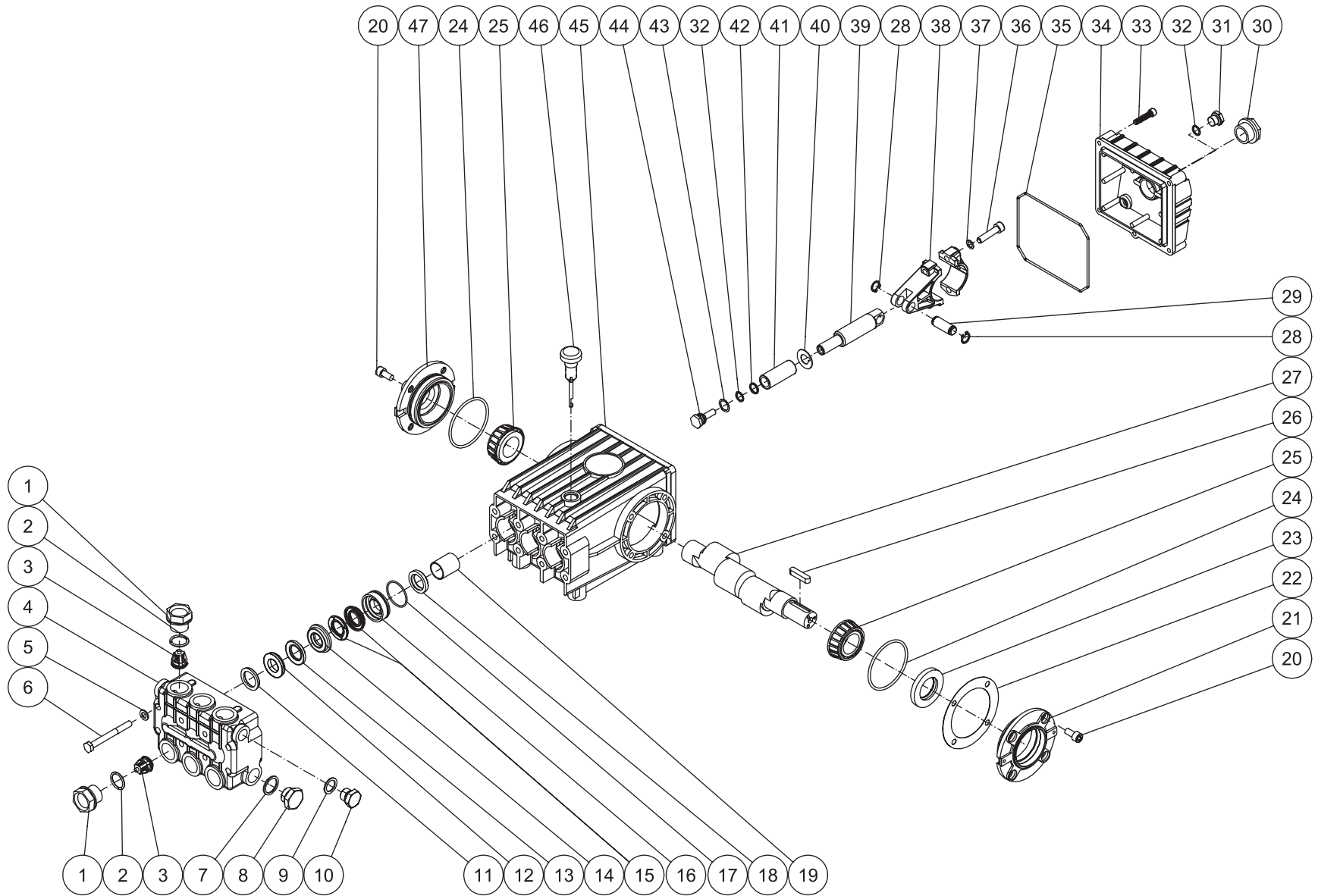
<b>ELECTRICAL BOX ASSEMBLY</b>			
<b>REF. #</b>	<b>DESCRIPTION</b>	<b>PART #</b>	<b>QTY.</b>
1	Electrical Box	32-0799	1
2	Bolt	27-8835	6
3	Washer	28-0010	4
4	Fuse- 0.5A	32-0467	2
5	Fuse- 0.6A	32-0471	1
6	Transformer	32-0324	1
7	Timer Switch	32-0800	1
8	Electrical Panel	20-0723A01	1
9	Wrap *(One Foot Required)	33-0114	1
10	Strain Relief	32-0437	2
11	Locknut	32-0108	2
12	Wire Clips	33-0264	1
13	Conduit Flex *(Two Feet Required)	32-0253	1
14	Conduit Elbow	32-0254	1
15	Cord Relief	9-0046	1
16	Locknut	32-0292	1
17	Bolt	27-8807	1
18	Lockwasher	28-1009	3
19	Hex Nut	30-6001	3
20	Contactor	32-0810	1
21	Washer	28-0002	1
22	Bolt	27-0017	1
23	Terminal Strip	32-0436	1
*Must Order in One Foot Lengths			

# ELECTRIC BOX ASSEMBLY



ELECTRICAL BOX ASSEMBLY			
REF. #	DESCRIPTION	PART #	QTY.
1	Electrical Box	32-0799	1
2	Bolt	27-8835	6
3	Washer	28-0010	4
4	Fuse- 0.5A	32-0467	2
5	Fuse- 0.6A	32-0471	1
6	Transformer	32-0324	1
7	Timer Switch	32-0800	1
8	Electrical Panel	20-0723A01	1
9	Wrap *(One Foot Required)	33-0114	1
10	Strain Relief	32-0437	4
11	Locknut	32-0108	4
12	Wire Clips	33-0264	1
13	Cord *(Two Feet Required)	32-0445	1
14	Washer	32-0814	4
15	Bolt	27-8807	1
16	Locknut	28-1009	3
17	Hex Nut	30-6001	3
18	Contactactor	32-0810	1
19	Washer	28-0002	1
20	Bolt	27-0017	1
21	Terminal Strip	32-0436	1
*Must Order in One Foot Lengths			

# PUMP ASSEMBLY (3-0202 AND 3-0203) (After Serial #10375000)

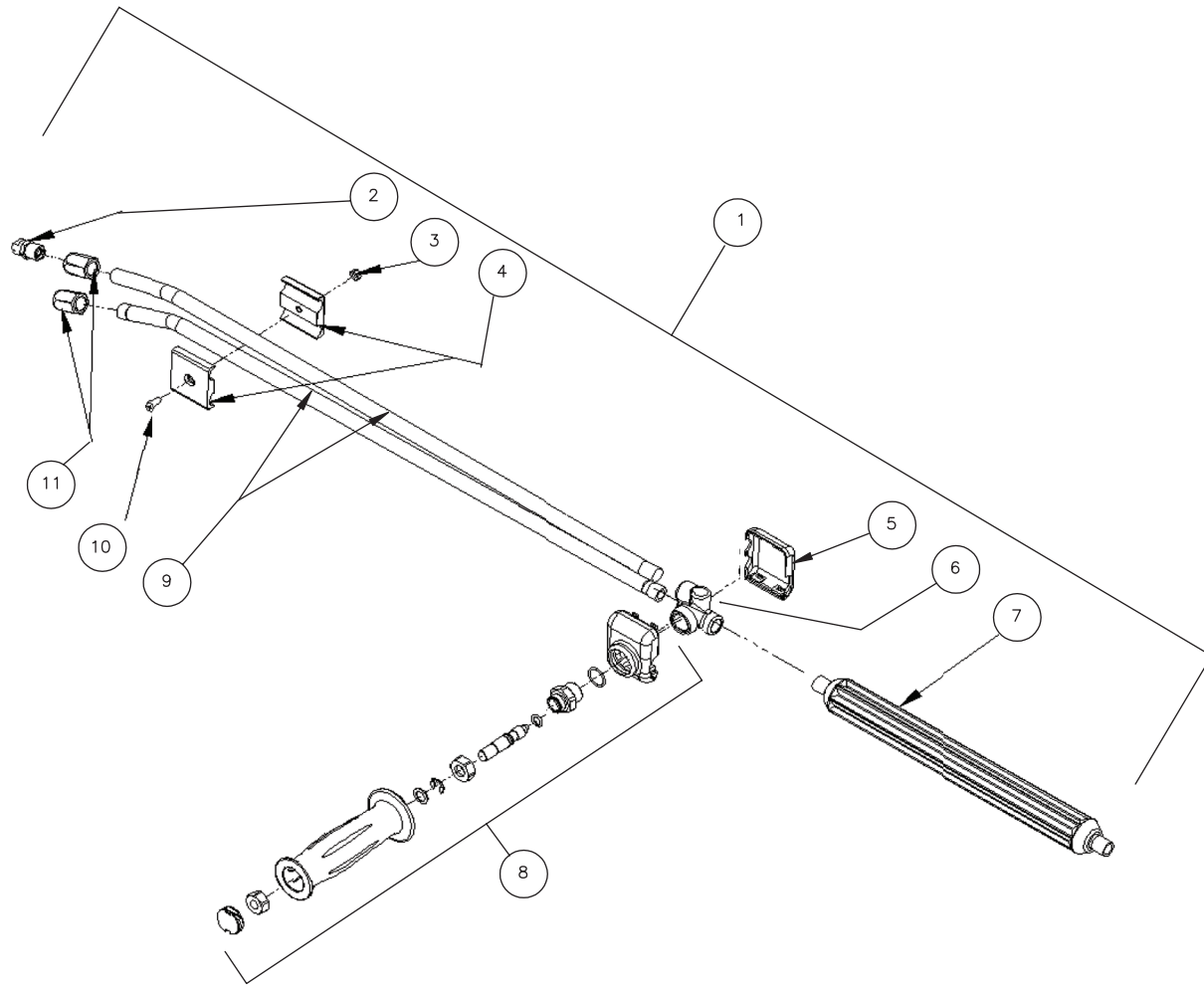


3-0202\_3-0203-010408-JJT



PUMP ASSEMBLY											
REF. #	DESCRIPTION	PART #	QTY.	REF. #	DESCRIPTION	PART #	QTY.	REF. #	DESCRIPTION	PART #	QTY.
1	Valve Plug	46-0889	6	18	Oil Seal	26-0047	3	35	O-ring Cover	25-0339	1
2	O-ring	25-0012	6	19	Bushing	9-0029	3	36	Bolt	27-8435	6
3	Valve Assembly (See 70-0009)	N/A Sep.	6	20	Bolt	27-8431	8	37	Lockwasher	29-0154	6
4	Manifold	46-0890	1	21	Crankcase Open Cover	46-0296	1	38	Connecting Rod	46-0051	3
5	Flatwasher	28-1039	8	22	Shim	46-0113	1	39	Piston Rod	46-0056	3
6	Bolt	27-8185	8	23	Oil Seal	26-0049	1	40	Washer	46-0146	3
7	Washer	28-1038	2	24	O-ring	25-0013	2	41	Plunger	46-0052	3
8	Plug	39-0019	2	25	Bearing	48-0012	2	42	Back-up Ring	46-0109	3
9	Washer	28-1002	2	26	Key	43-0048	1	43	Washer	28-0400	3
10	Plug	39-0018	2	27	Crankshaft	N/A	1	44	Bolt	46-0069	3
11	O-ring (See 70-0030)	N/A Sep.	3	28	Retaining Ring	46-0103	6	45	Crankcase	46-0047	1
12	V-Packing	26-0098	3	29	Connecting Rod Pin	43-0032	3	46	Oil Dip Stick	46-0144	1
13	Ring	25-0207	3	30	Oil Level Indicator	46-0114	1	47	Crankcase Cover	46-0336	1
14	High Pressure Intermediate Seal Retainer	46-0659	3	31	Plug	39-0017	1		Valve Kit (6 each 3)	70-0009	
15	Low Pressure Seal	N/A Sep.	3	32	O-ring	25-0014	4		Head Ring Kit (3 each 11)	70-0030	
16	Low Pressure Seal Retainer	46-0057	3	33	Bolt	27-8404	5		V-Packing Kit (3 each 12, 13, 15)	70-0147	
17	O-ring	25-0015	3	34	Crankcase Cover	46-0295	1		Intermediate Retainer Kit (3 each 13, 14)	70-0148	
									V-Packing Assembly (3 each 11-17)	852-0122	

# DUAL LANCE ASSEMBLY (16-0416)

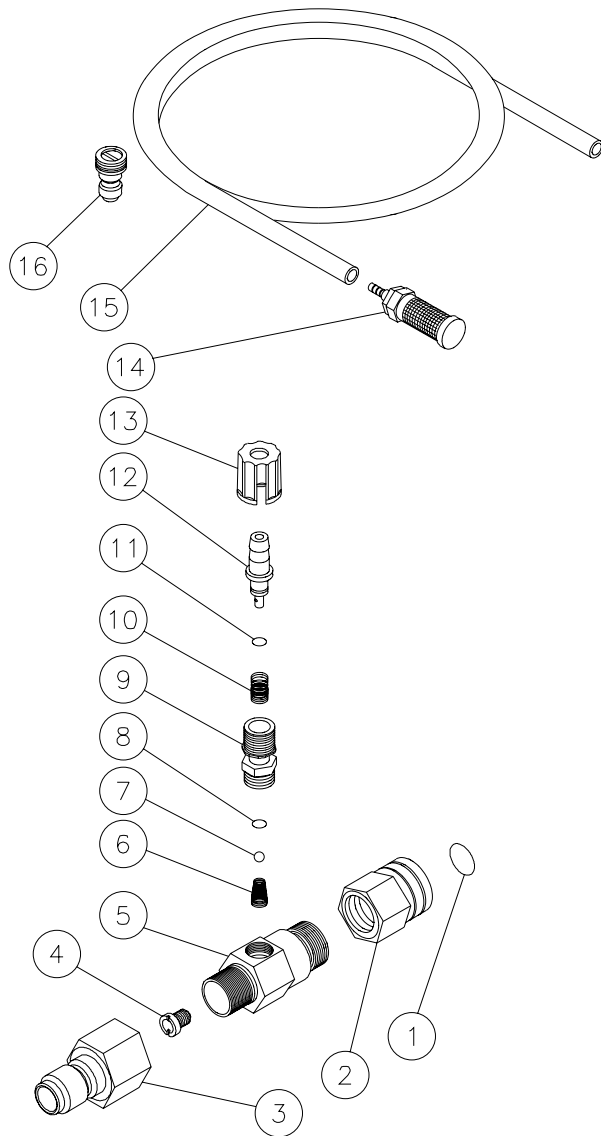


16-0416\_16-0417-102405-RZ

<b>DUAL LANCE ASSEMBLY (16-0416)</b>			
<b>REF. #</b>	<b>DESCRIPTION</b>	<b>PART #</b>	<b>QTY.</b>
1	Dual Lance Assembly - 36" (Inc. 2-11)	16-0416	1
2	Detergent Nozzle	18-0110	1
3	Nut	30-6001	1
4	Clamp	16-0420	2
5	Lower Valve Cover (See 16-0416)	N/A Sep.	1
6	Housing (See 16-0416)	N/A Sep.	1
7	Lance	16-0419	1
8	Handle Repair Kit	70-0419	1
9	Lance (See 16-0416)	N/A Sep.	2
10	Screw	27-8196	1
11	Nozzle Adapter	24-0280	2

# DETERGENT INJECTOR (AW-8300-0000)

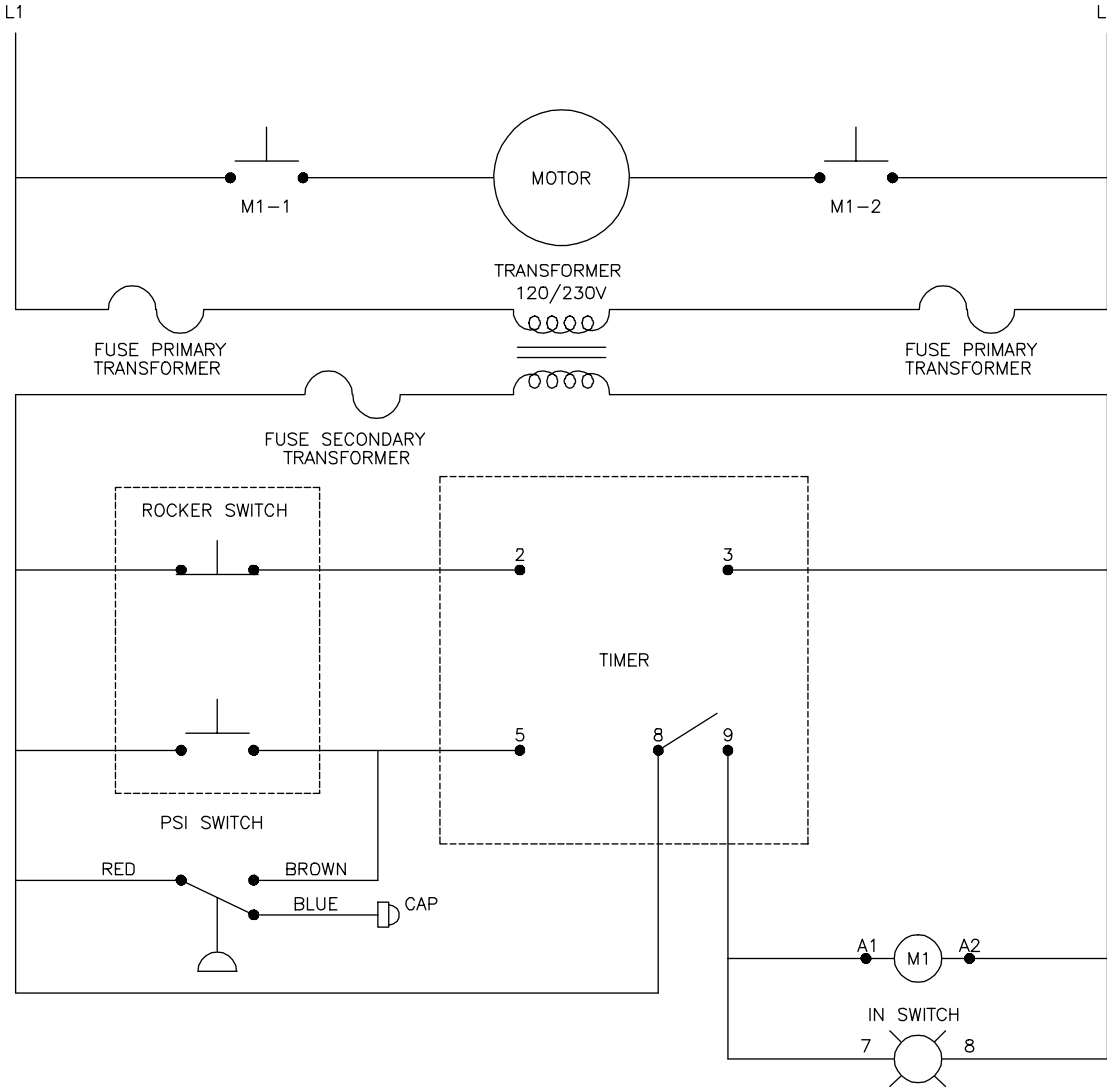
OMGEN276-052898-DCE



DETERGENT INJECTOR (AW-8300-0000)			
REF. #	DESCRIPTION	PART #	QTY.
1	O-ring	25-0123	1
2	Quick Connect	17-0004	1
3	Quick Connect	17-0006	1
4	Orifice- 2.1 MM	50-0057	1
5	Injector Body (Brass)	N/A	1
6	Spring (See 852-0056)	N/A Sep	11
7	Ball (See 852-0056)	N/A Sep	1
8	O-Ring (See 852-0056)	N/A Sep	1
9	Piston Retainer	50-0156	1
10	Spring	49-0056	1
11	O-ring (See 852-0056)	N/A Sep	1
12	Adjustable Shutter Barb	50-0157	1
13	Adjustment Knob - Black Plastic	50-0158	1
14	Detergent Strainer	19-0050	1
15	Detergent Hose *(Six feet required)	15-0021	1
16	Detergent Nozzle	18-0148	1
	Injector Repair Kit (Inc. 6, 7, 8, 11)	852-0056	
	Detergent Injector 2.1mm orifice (Inc. 4-13)	50-0052	
*Must Order in One Foot Lengths			

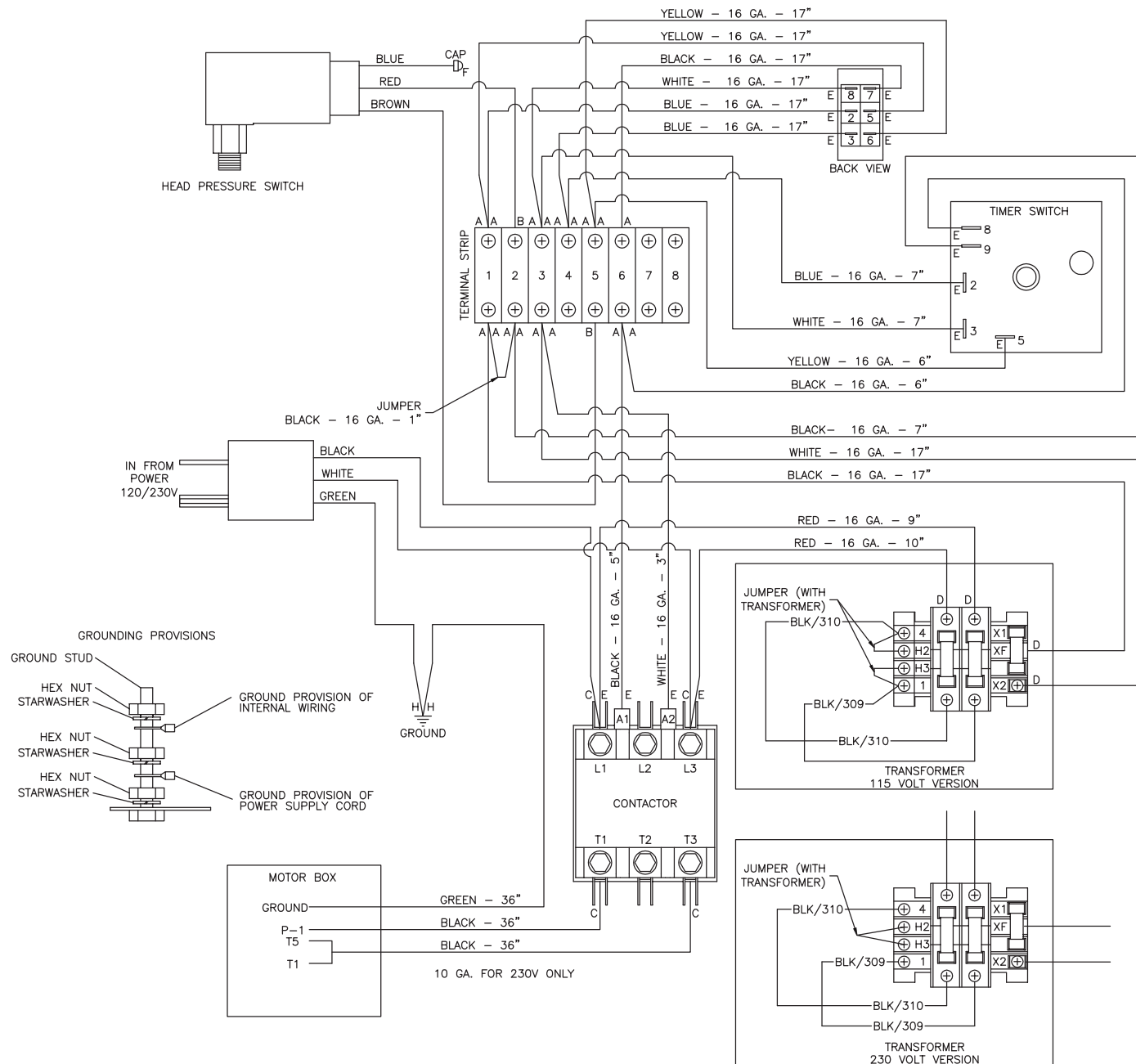
OMGEN276-052898-DCE

# WIRING SCHEMATIC



CW-1003/2004-SME1 WIRE  
 SCHEMATIC-062204-DLG

# WIRING DIAGRAM



CW-1003/2004-SME1 WIRE  
DIAGRAM-062204-DLG

---

## NOTES

Manufactured by Mi-T-M  
8650 Enterprise Drive, Peosta IA 52068  
563-556-7484/ Fax 563-556-1235