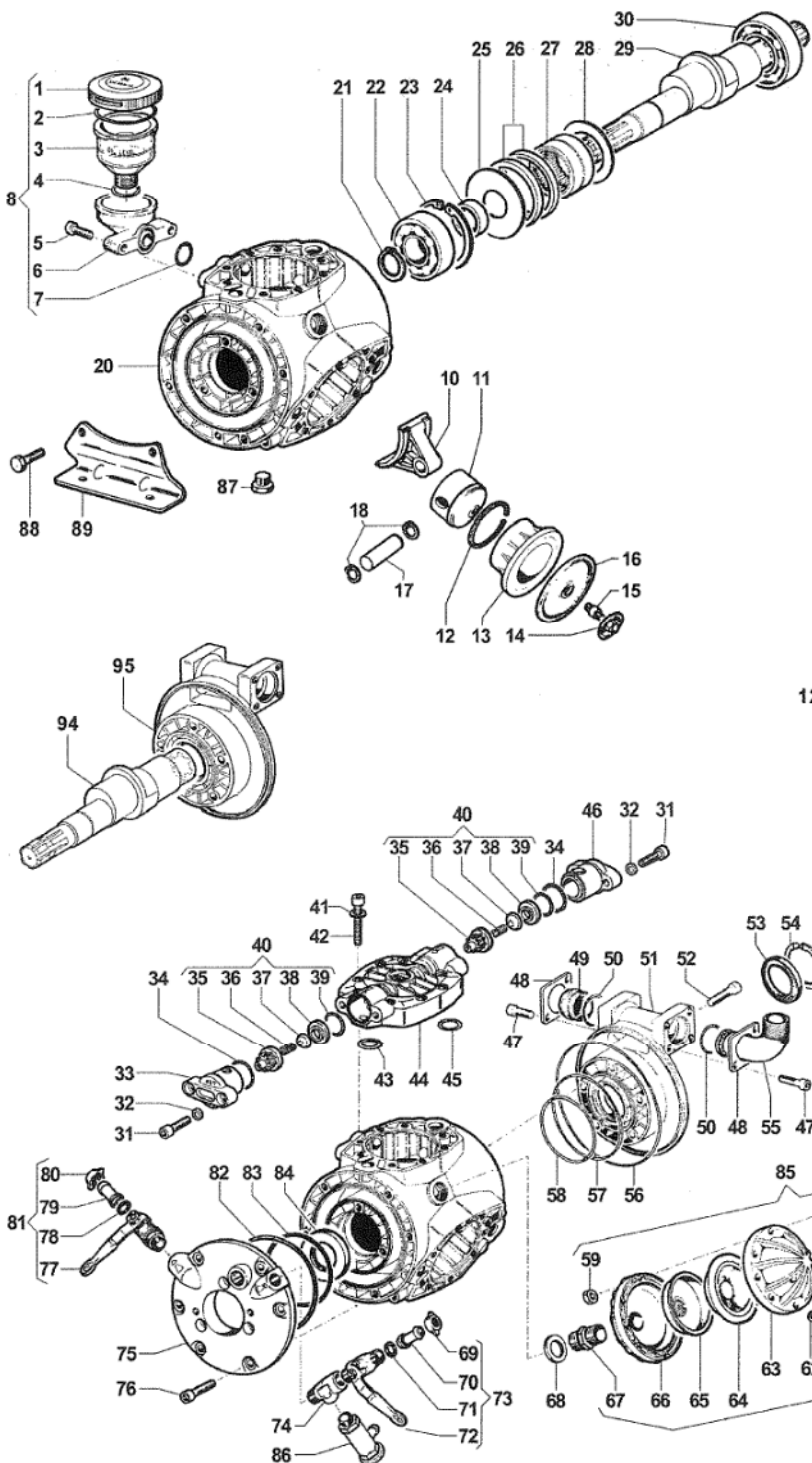


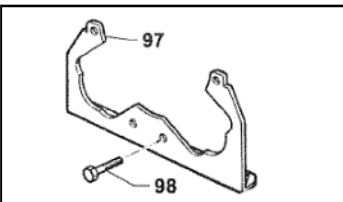
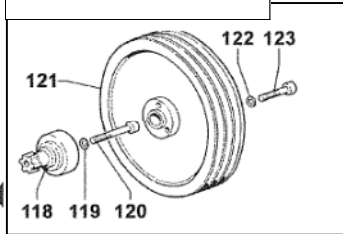


# APS101 / APS121

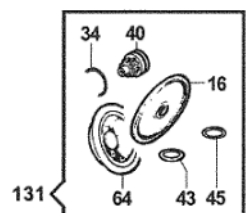
APS101 / APS121



Pulley kit for female shaft side



Versions with reinforced mounting brackets (APS101S / APS121S)



PRICES SUBJECT TO CHANGE WITHOUT NOTICE.

#	PART #	DESCRIPTION	NOTE	QTY
1	0402.0143.00	CAP		1
2	1210.0373.00	O-RING	3,53X73,03	1
3	0421.0012.00	OIL CUP		1
4	1210.0002.00	O-RING	2,62X20,7	1
5	3609.0058.00	SCREW	M8x22	2
6	3002.0566.00	COMPENSATOR SUPPORT		1
7	1210.0110.00	O-RING	3,53x24,99	1
8	1208.0018.00	VOLUMETRIC COMPENS. KIT		1
10	0205.0061.00	CONNECTING ROD ASSEMBLY		1
11	2409.0068.00	PISTON	70	3
12	0020.0001.00	COMPRESSION RING	70x3Xx2,8	3
13	0400.0071.00	APS121 PISTON SLEEVE	70	3
	0400.0070.00	APS101 PISTON SLEEVE	70	3
14	0602.0011.00	DISC		3
15	2419.0042.00	STUD BOLT	12x30/11X11	3
16	1800.0012.00	DIAPHRAGM	BUNA	3
	1800.0058.00	DIAPHRAGM	DESMOPAN	3
	1800.0031.00	DIAPHRAGM	VITON	3
17	3011.0003.00	CONNECTING ROD PIN	18x57	3
18	3020.0006.00	RETAINING CLIP	18	6
20	0403.0126.00	PUMP CRANKCASE		1
21	3019.0018.00	OUTER SEEGER	40	1
22	0438.0049.00	BALL BEARING	40x90X23	1
23	3020.0002.00	RETAINING CLIP	90	1
24	0601.0226.00	SPACER	40x55X16	1
25	2813.0075.00	CONNECTING ROD WASHER	40X107X4,7	1
26	0010.0023.00	CONNECTING ROD RING	99x88x8	2
27	0437.0004.00	ROLLER BEARING	60x78x40	1
28	2813.0074.00	CONNECTING ROD WASHER	60,5x96x5	1
29	0001.0281.00	APS121 THROUGHSHAFT	1"3/8 M-M	1
	0001.0311.00	APS101 THROUGHSHAFT	1"3/8 M-M	1
30	0438.0011.00	BALL BEARING	55x100x21	1
31	3609.0009.00	SCREW	M10x35	12
32	2811.0098.00	WASHER	10,5x18x2	12
33	3202.0218.00	PLUG		3
34	1210.0385.00	O-RING	2,62x45,69	6
35	1205.0030.00	SUCT./DELIVERY VALVE CAGE		6
36	1802.0015.00	SPRING (WIRE 0,8)	e11x17	6
37	3604.0009.00	SUCTION/DELIVERY VALVE		6
38	3009.0014.00	SUCT./DELIVERY VALVE SEAT		6
39	1210.0114.00	O-RING	3,53x36,1	6
40	1220.0034.00	SUCT./DEL. VALVE ASSY KIT		6
41	2811.0025.00	WASHER	13x20x2,5	24
42	3609.0057.00	SCREW	M12x65	24
43	1210.0047.00	O-RING	2,62X22,22	3
44	3218.0099.00	PUMP MANIFOLD		3
45	1210.0145.00	O-RING	2,62x28x25	3
46	3202.0219.00	PLUG		3
47	3609.0164.00	SCREW	M8x16	4
48	2404.0135.00	HOSE TAIL FIXING PLATE		2

#	PART #	DESCRIPTION	NOTE	QTY
49	3202.0199.00	PLUG		1
50	1210.0489.00	O-RING	3x33	2
51	1009.0097.00	FLANGE		1
52	3609.0009.00	SCREW	M10x35	5
53	0019.0089.00	OIL SEAL	55x72x8	1
54	3020.0007.00	RETAINING CLIP	72	1
55	2801.0055.00	ELBOW COUPLING	40	1
56	1210.0359.00	O-RING	3,53x196,4	1
57	1210.0353.00	O-RING	2,62x145,72	1
58	1210.0361.00	O-RING	3,53x98,02	1
59	0604.0015.00	NUT	M8	8
60	3607.0025.00	HEXAGONAL SCREW	M8x45	8
61	3610.0003.00	AIR VALVE		1
62	1209.0033.00	GASKET	14x7,5x2	2
63	0003.0027.00	PRESSURE ACCUMULATOR		1
64	1800.0034.00	DIAPHRAGM		1
65	0460.0036.00	DIAPHRAGM SUPPORT CAP		1
66	0002.0031.00	PRESSURE ACCUMULATOR		1
67	2000.0024.00	NIPPLE	G3/4-G3/4	1
68	0601.0284.00	SPACER	36x27x3	1
69	1200.0038.00	WING NUT	1/2" GAS	1
70	2802.0020.00	DELIVERY HOSE TAIL	10x13	1
71	1209.0013.00	GASKET	12x18X2	1
72	2826.0032.00	RIGHT TAP		1
73	1214.0016.00	COMPLETE RIGHT TAP		1
74	2803.0354.00	"T" COUPLING		1
75	1009.0099.00	FLANGE		19
76	3609.0009.00	SCREW	M10x35	1
77	2826.0031.00	LEFT TAP		1
78	1209.0013.00	GASKET	12x18X2	1
79	2802.0020.00	DELIVERY HOSE TAIL	10x13	1
80	1200.0038.00	WING NUT	1/2" GAS	1
81	1214.0017.00	COMPLETE LEFT TAP		1
82	1210.0355.00	O-RING	2,62x164,77	1
83	1210.0351.00	O-RING	2,62x120,32	1
84	0019.0087.00	OIL SEAL	40x80x10	1
85	1225.0014.00	PULSATION DAMPNER		1
86	1219.0041.00	SAFETY VALVE ASSY.		1
87	3200.0007.00	PLUG	3/8 GAS	1
88	3607.0220.00	HEXAGONAL SCREW	M10x30	4
89	2400.0046.00	PUMP MOUNTING BRACKET		2

#	PART #	DESCRIPTION	NOTE	QTY
97	2400.0083.00	SPECIAL PUMP BRACKET		2
98	3607.0220.00	HEXAGONAL SCREW	M10x30	4

#	PART #	DESCRIPTION	NOTE	QTY
131	5026.0089.00	REBUILD KIT		1