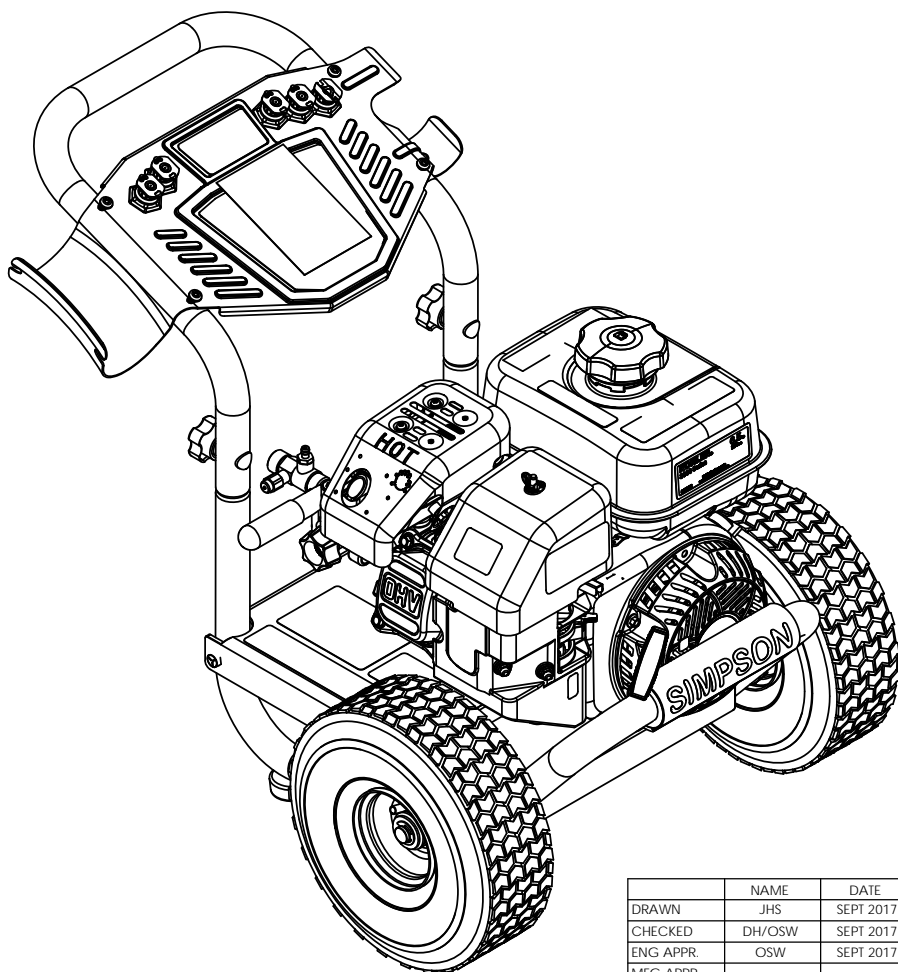


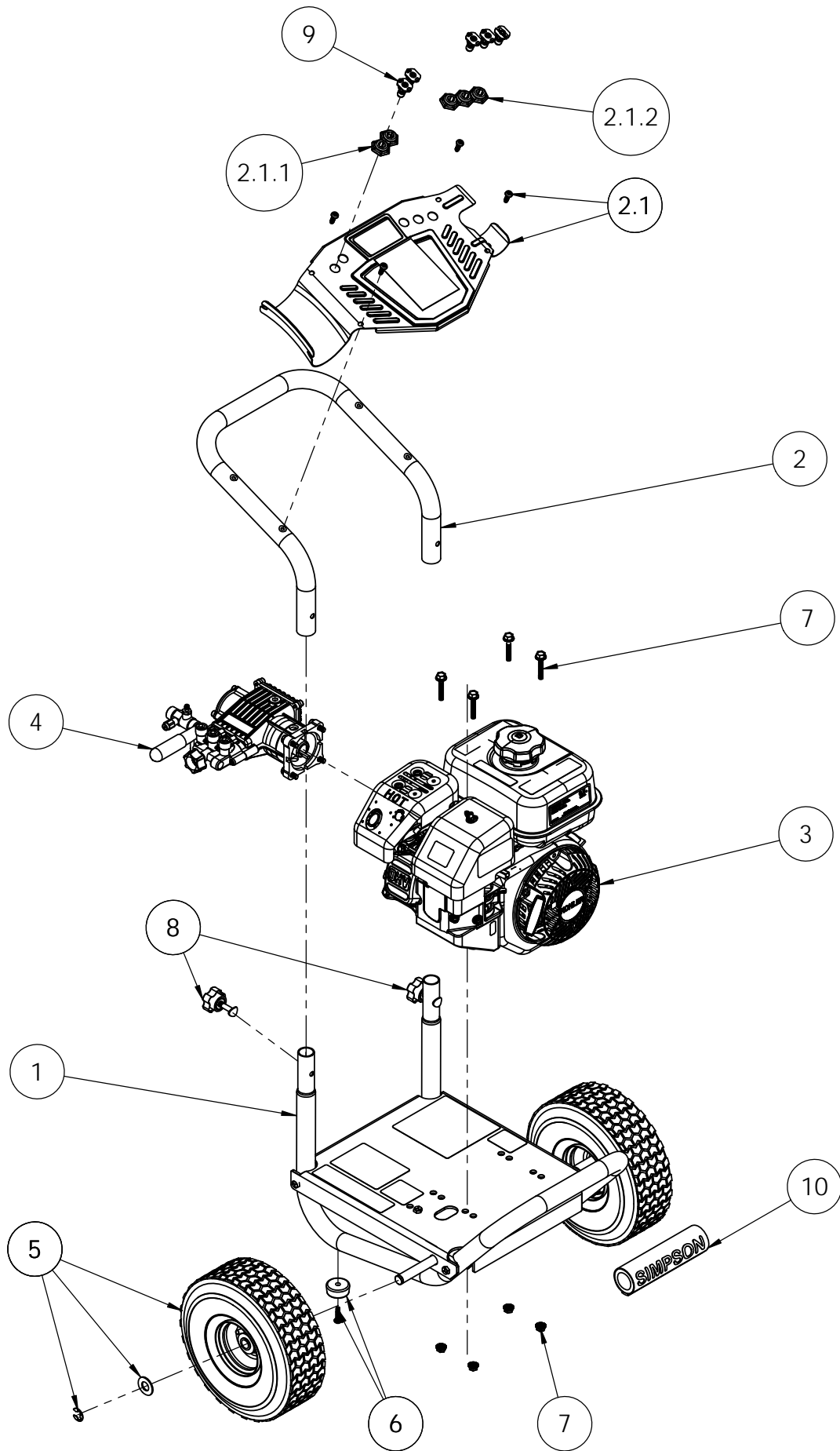
ITEM	PART NO	QTY.	DESCRIPTION
1	7107250	1	BASE FRAME, SVC ASSY W/ LABELS ALUMINUM
2	7107251	1	HANDLE, REAR SERVICE ASSEMBLY WITH LABELS
2.1	7110285	1	ALH3225 DASHBOARD KIT
2.1.1	7107067	1	HOLDER, NOZZLE 2PC RUBBER STRIP
2.1.2	7107068	1	HOLDER, NOZZLE 3PC RUBBER STRIP
3	7107223	1	ENGINE SVC ASSY, KOHLER SH265
4	7106573	1	PUMP, SERVICE ASSEMBLY
5	7105013	1	WHEEL, SERVICE KIT
6	7107262	2	FOOT KIT, SERVICE KIT
7	7103750	1	MOUNTING KIT, ENGINE
8	7103279	2	HARDWARE KIT, HANDLE MOUNTING
9	7104818	1	NOZZLE, #2.80 5PCSET 0, 15, 25, 40 & SOAP
10	7106671	1	HANDLE GRIP, SIMPSON BLACK W/ WHITE LETTERING



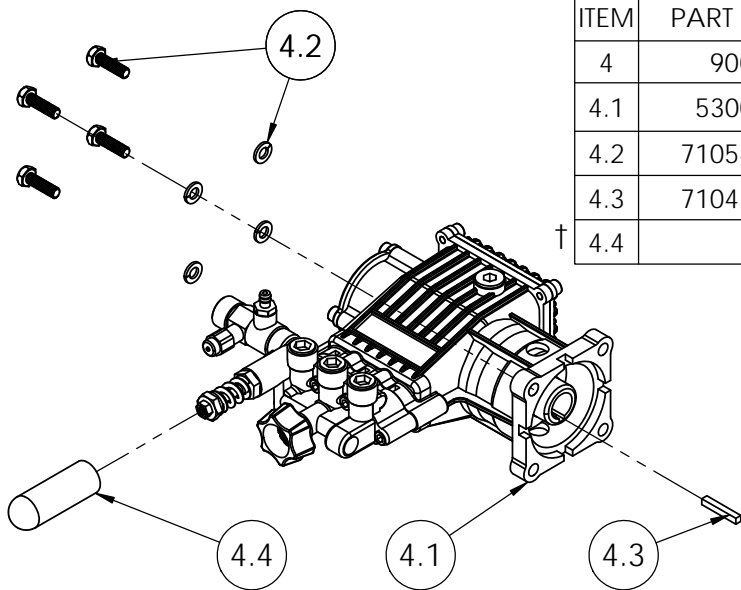
	NAME	DATE
DRAWN	JHS	SEPT 2017
CHECKED	DH/OSW	SEPT 2017
ENG APPR.	OSW	SEPT 2017
MFG APPR.	-	-
Q.A. APPR.	-	-
SERVICE APPR.	DH	SEPT 2017

PROPRIETARY AND CONFIDENTIAL
 THE INFORMATION CONTAINED IN THIS DRAWING IS THE SOLE PROPERTY OF FNA-GROUP. ANY REPRODUCTION IN PART OR AS A WHOLE WITHOUT THE WRITTEN PERMISSION OF FNA-GROUP IS PROHIBITED.

FNA-GROUP		
1265 INDUSTRIAL STREET, DECATUR, AR 72722		
TITLE:		
ALH3225 SIMPSON 3200PSI @ 2.5GPM		
SIZE	DWG. NO.	REV.
A	60686, 60774	D
SCALE: N/A	ECN # EC17-0297	SHEET 1 OF 3



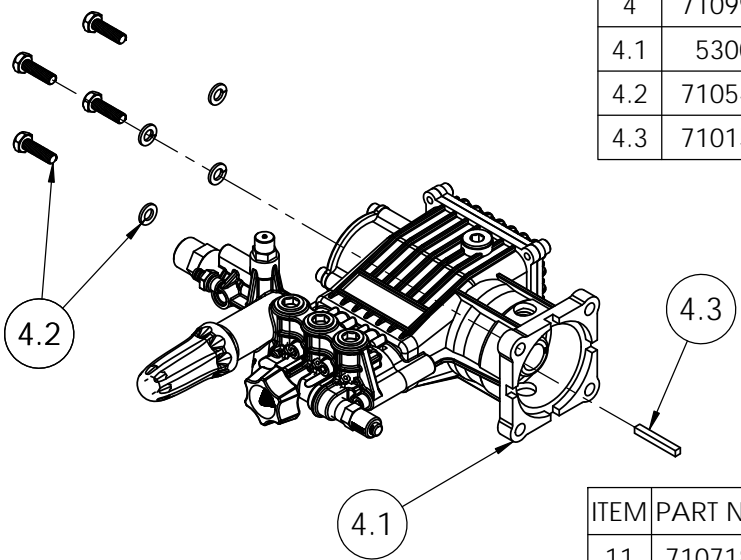
SIZE	DWG. NO.	REV.
A	60686, 60774	D
SCALE: N/A	ECN # EC17-0297	SHEET 2 OF 3



ITEM	PART NO	QTY.	DESCRIPTION
4	90037	1	PUMP, SERVICE ASSEMBLY
4.1	530011	1	PUMP, 3400PSI @ 2.3GPM HORIZONTAL-TRIPLEX
4.2	7105474	1	HARDWARE KIT, PUMP MOUNTING
4.3	7104174	1	KEY, SHAFT 3/16" x 3/16" x 1 1/4"
† 4.4		1	CAP, UNLOADER COVER 1 1/2" x 5/8" BLACK

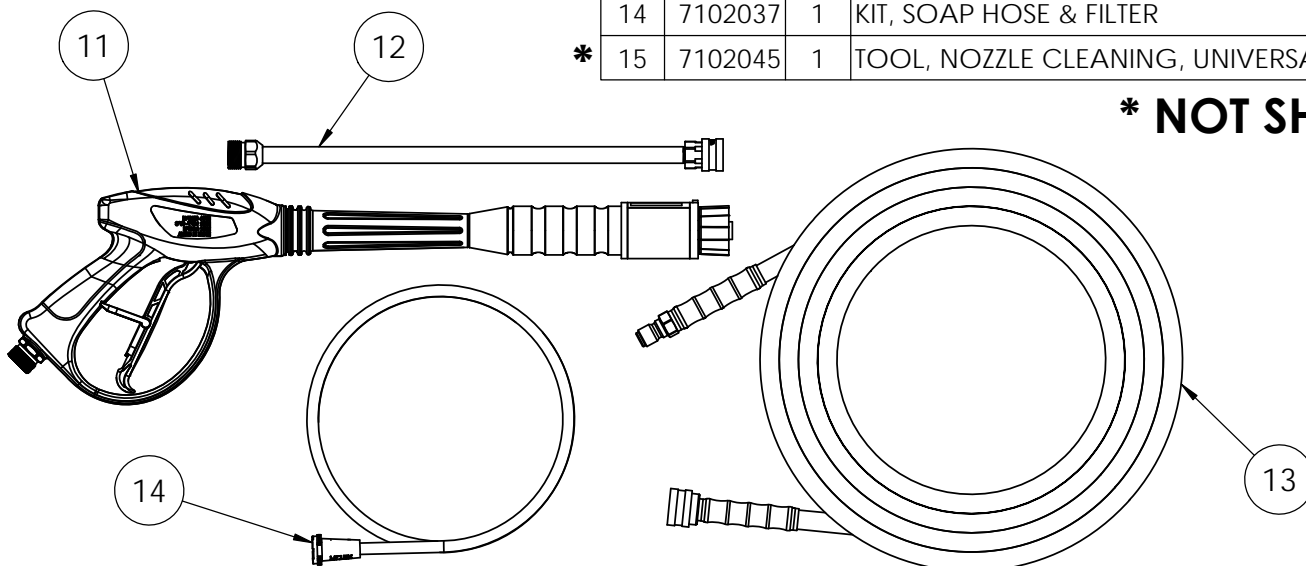
† NOT SOLD SEPERATELY

530011 PUMP SERVICE ASSY
P/N 90037
S/N 000000→1802831



ITEM	PART NO	QTY.	DESCRIPTION
4	7109932	1	PUMP SERVICE ASSY KIT
4.1	530017	1	PUMP, CY SERIES, HORIZ TRIPLEX, 12x8.2
4.2	7105474	1	HARDWARE KIT, PUMP MOUNTING
4.3	7101506	1	KEY, SHAFT 3/16 X 3/16 X 1-1/2

530017 PUMP SERVICE ASSY
P/N 7109932
S/N 1802832→PRESENT



ITEM	PART NO	QTY.	DESCRIPTION
11	7107182	1	GUN, 4500PSI, 6.6GPM, M22(M) W/DIAL-N-WASH
12	7103550	1	LANCE, 16" W/ 1/4 QC AND M22(M)
13	7107184	1	HOSE, 5/16" x 35' x 3700PSI MORFLEX M22
14	7102037	1	KIT, SOAP HOSE & FILTER
* 15	7102045	1	TOOL, NOZZLE CLEANING, UNIVERSAL

*** NOT SHOWN**