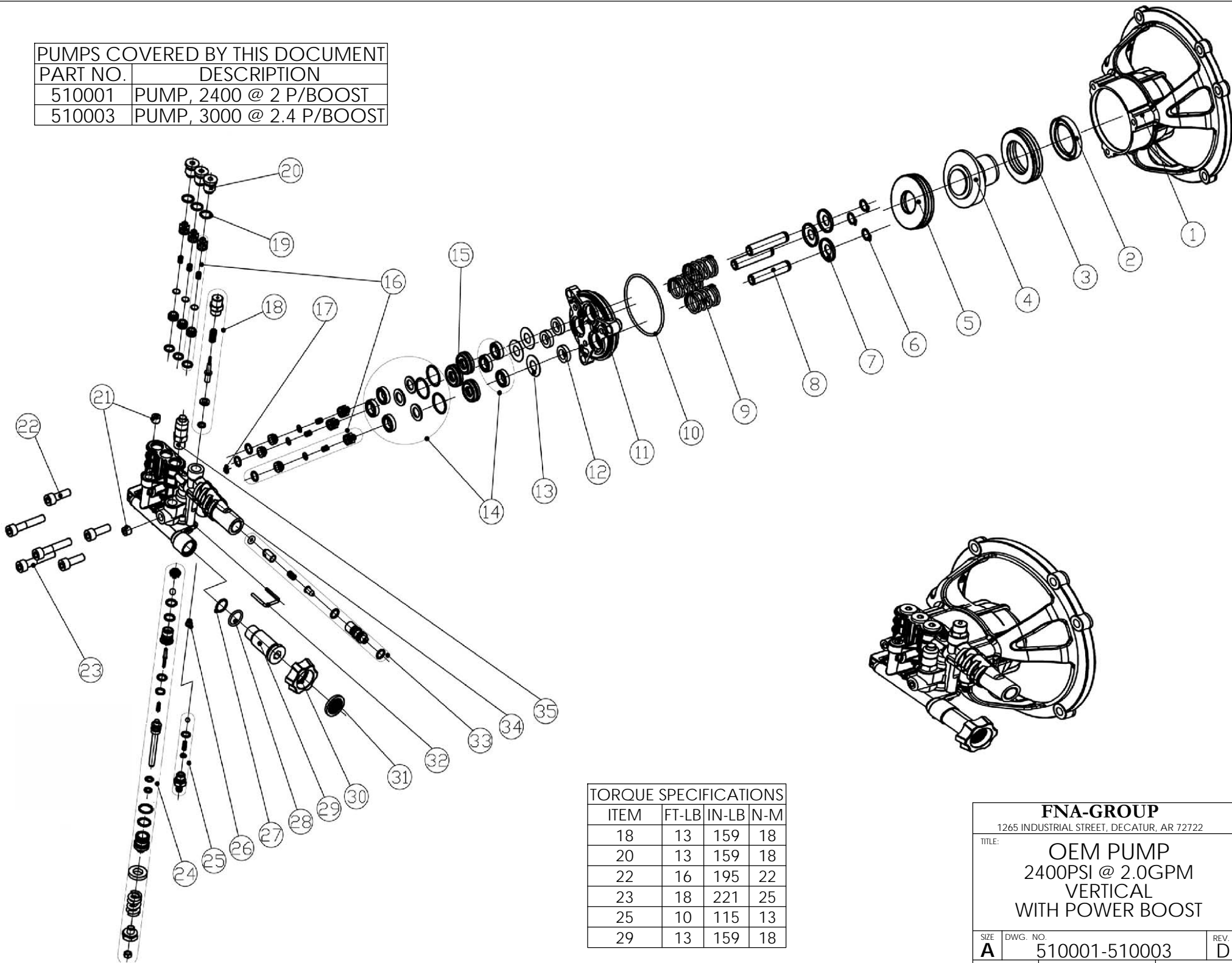
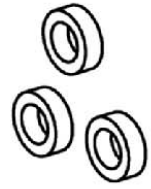


| PUMPS COVERED BY THIS DOCUMENT |                          |
|--------------------------------|--------------------------|
| PART NO.                       | DESCRIPTION              |
| 510001                         | PUMP, 2400 @ 2 P/BOOST   |
| 510003                         | PUMP, 3000 @ 2.4 P/BOOST |



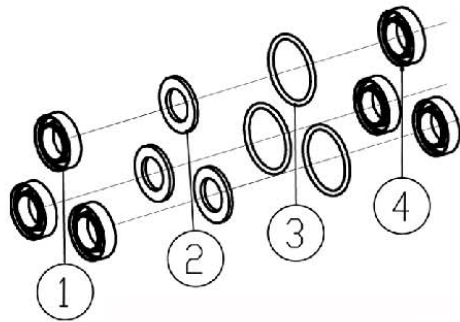
| TORQUE SPECIFICATIONS |       |       |     |
|-----------------------|-------|-------|-----|
| ITEM                  | FT-LB | IN-LB | N-M |
| 18                    | 13    | 159   | 18  |
| 20                    | 13    | 159   | 18  |
| 22                    | 16    | 195   | 22  |
| 23                    | 18    | 221   | 25  |
| 25                    | 10    | 115   | 13  |
| 29                    | 13    | 159   | 18  |

|  |                      |                |
|--|----------------------|----------------|
| <b>FNA-GROUP</b>   |                      |                |
| 1265 INDUSTRIAL STREET, DECATUR, AR 72722  |                      |                |
| TITLE:   |                      |                |
| <b>OEM PUMP</b><br><b>2400PSI @ 2.0GPM</b><br><b>VERTICAL</b><br><b>WITH POWER BOOST</b> |                      |                |
| SIZE   | DWG. NO.             | REV.           |
| <b>A</b>   | <b>510001-510003</b> | <b>D</b>       |
| SCALE:   | N/A                  | ECN# DC15-0145 |
|  |                      | SHEET 1 OF 6   |



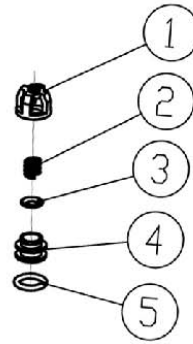
12 PART NO. 7106662

| OIL SEAL KIT |     |             |
|--------------|-----|-------------|
| ITEM         | QTY | DESCRIPTION |
| 1            | 3   | SEAL, OIL   |



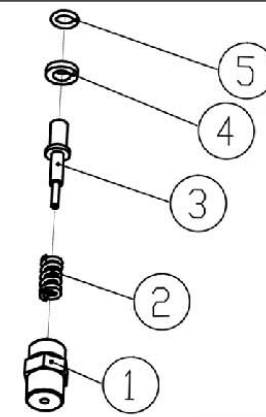
14 PART NO. 7106664

| WATER SEAL KIT |     |                    |
|----------------|-----|--------------------|
| ITEM           | QTY | DESCRIPTION        |
| 1              | 3   | HIGH PRESSURE SEAL |
| 2              | 3   | BACK RING          |
| 3              | 3   | O-RING             |
| 4              | 3   | LOW PRESSURE SEAL  |



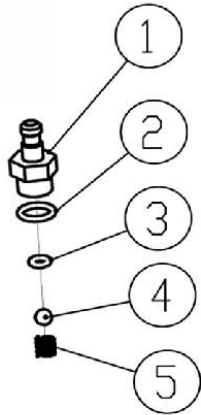
16 PART NO. 7104223

| VALVE KIT |     |             |
|-----------|-----|-------------|
| ITEM      | QTY | DESCRIPTION |
| 1         | 6   | VALVE CASE  |
| 2         | 6   | SPRING      |
| 3         | 6   | VALVE PLATE |
| 4         | 6   | VALVE SEAT  |
| 5         | 6   | O-RING      |



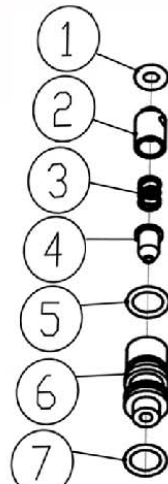
18 PART NO. 7106628

| BOOST VALVE KIT |     |              |
|-----------------|-----|--------------|
| ITEM            | QTY | DESCRIPTION  |
| 1               | 1   | VALVE CASE   |
| 2               | 1   | VALVE SPRING |
| 3               | 1   | VALVE POLE   |
| 4               | 1   | VALVE PLATE  |
| 5               | 1   | O-RING       |



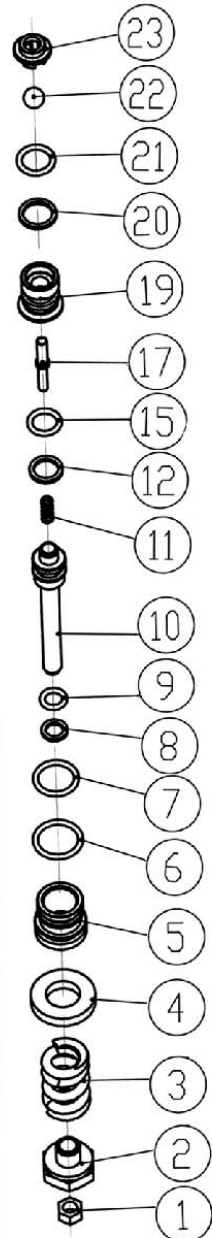
25 PART NO. 7104228

| SOAP INJECTOR KIT |     |             |
|-------------------|-----|-------------|
| ITEM              | QTY | DESCRIPTION |
| 1                 | 1   | HOSE BARB   |
| 2                 | 1   | O-RING      |
| 3                 | 1   | O-RING      |
| 4                 | 1   | STEEL BALL  |
| 5                 | 1   | SPRING      |



33 PART NO. 7106630

| VENTURI TUBE KIT |     |                    |
|------------------|-----|--------------------|
| ITEM             | QTY | DESCRIPTION        |
| 1                | 1   | O-RING             |
| 2                | 1   | CHECK VALVE CORE   |
| 3                | 1   | CHECK VALVE SPRING |
| 4                | 1   | NOZZLE             |
| 5                | 1   | O-RING             |
| 6                | 1   | VENTURI TUBE       |
| 7                | 1   | O-RING             |



24 PART NO. 7104226

| UNLOADER KIT |     |               |
|--------------|-----|---------------|
| ITEM         | QTY | DESCRIPTION   |
| 1            | 1   | NUT           |
| 2            | 1   | ADJUSTING NUT |
| 3            | 1   | SPRING        |
| 4            | 1   | SEATING RING  |
| 5            | 1   | VALVE SHEATH  |
| 6            | 1   | O-RING        |
| 7            | 1   | O-RING        |
| 8            | 1   | CHECKING RING |
| 9            | 1   | O-RING        |
| 10           | 1   | VALVE POLE    |
| 11           | 1   | SPRING        |
| 12           | 1   | CHECKING RING |
| 15           | 1   | O-RING        |
| 17           | 1   | PIN           |
| 19           | 1   | UPPER SEAT    |
| 20           | 1   | CHECKING RING |
| 21           | 1   | O-RING        |
| 22           | 1   | STEEL BALL    |
| 23           | 1   | BACK SEAT     |

# 510001 PUMP DRAWING PARTS LIST

| ITEM | PART NO. | DESCRIPTION              | QTY PER PUMP | COMMENT                      |
|------|----------|--------------------------|--------------|------------------------------|
| 1    |          | Case                     | 1            |                              |
| 2    |          | Oil Seal                 | 1            |                              |
| 3    |          | Thrusting Bearing 2      | 1            |                              |
| 4    |          | Back Ring, Wobble Plate  | 1            |                              |
|      |          | O-Ring                   | 1            |                              |
|      |          | Wobble Plate             | 1            |                              |
| 5    |          | Thrusting Bearing 1      | 1            |                              |
| 6    |          | Clip                     | 3            |                              |
| 7    |          | Spring Base              | 3            |                              |
| 8    |          | Plunger                  | 3            |                              |
| 9    |          | Spring, Plunger          | 3            |                              |
| 10   |          | O-Ring                   | 1            |                              |
| 11   |          | Base, Plunger            | 1            |                              |
| 12   | 7105741  | Oil Seal                 | 3            | Oil Seal Kit                 |
| 13   |          | Back Ring                | 3            |                              |
| 14   | 7106627  | High Pressure Water Seal | 3            | Water Seal Kit               |
|      |          | Back Ring                |              |                              |
|      |          | O-Ring                   |              |                              |
|      |          | Low Pressure Water Seal  |              |                              |
| 15   | 7106643  | Back Ring                | 3            |                              |
| 16   | 7104223  | Valve Case               | 6            | Valve Kit (INLET AND OUTLET) |
|      |          | Spring                   |              |                              |
|      |          | Valve Plate              |              |                              |
|      |          | Valve Seat               |              |                              |
|      |          | O-Ring                   |              |                              |
| 17   | 7106644  | O-Ring                   | 1            |                              |
| 18   | 7108157  | Boost Valve Case         | 1            | Boost Plug Kit               |
|      |          | Boost Valve Spring       |              |                              |
|      |          | Boost Valve Pole         |              |                              |
|      |          | Boost Valve Plate        |              |                              |
|      |          | O-Ring                   |              |                              |
| 19   | 7106645  | O-Ring                   | 3            |                              |
| 20   | 7106646  | Plug                     | 3            |                              |
| 21   | 7106647  | Plug                     | 2            |                              |
| 22   | 7106648  | Screw                    | 3            |                              |
| 23   | 7106649  | Screw                    | 3            |                              |

# 510001 PUMP DRAWING PARTS LIST

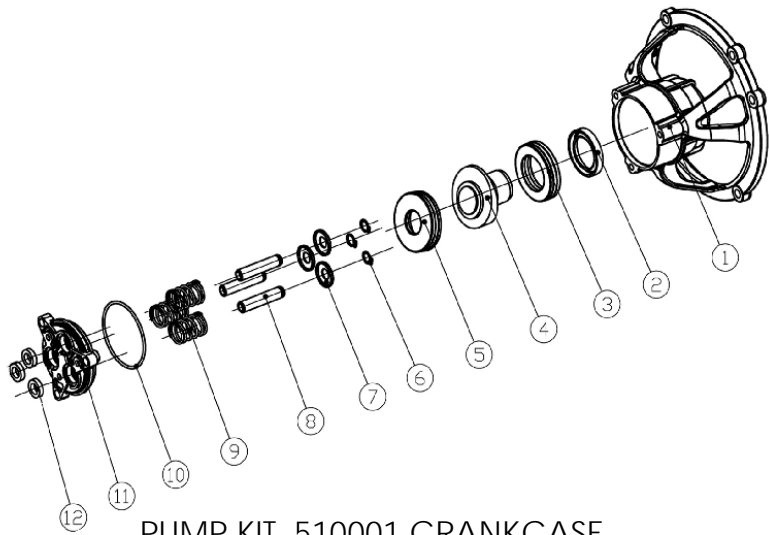
| ITEM       | PART NO. | DESCRIPTION            | QTY PER PUMP | COMMENT           |
|------------|----------|------------------------|--------------|-------------------|
| 24         | 7104226  | Nut                    | 1            | Unloader Kit      |
|            |          | Adjusting Nut          |              |                   |
|            |          | Spring                 |              |                   |
|            |          | Seating Ring           |              |                   |
|            |          | Valve Sheath           |              |                   |
|            |          | O-Ring                 |              |                   |
|            |          | O-Ring                 |              |                   |
|            |          | Checking Ring          |              |                   |
|            |          | O-Ring                 |              |                   |
|            |          | Valve Pole             |              |                   |
|            |          | Spring                 |              |                   |
|            |          | Checking Ring          |              |                   |
|            |          | O-Ring                 |              |                   |
|            |          | Pin                    |              |                   |
|            |          | Upper Seat             |              |                   |
|            |          | Checking Ring          |              |                   |
|            |          | O-Ring                 |              |                   |
| Steel Ball |          |                        |              |                   |
| Back Seat  |          |                        |              |                   |
| 25         | 7104228  | Nozzle                 | 1            | Soap Injector Kit |
|            |          | O-Ring                 |              |                   |
|            |          | O-Ring                 |              |                   |
|            |          | Steel Ball             |              |                   |
| Spring     |          |                        |              |                   |
| 26         | 7106650  | Venturi Tube Back Ring | 1            |                   |
| 27         | 7106651  | O-Ring                 | 1            |                   |
| 28         | 7106652  | O-Ring                 | 1            |                   |
| 29         | 7106653  | Inlet Connector        | 1            |                   |
| 30         | 7105705  | Garden Hose Nut        | 1            |                   |
| 31         | 7000123  | Filter Gasket          | 1            |                   |
| 32         | 7106655  | U-Pin                  | 1            |                   |
| 33         | 7106630  | O-Ring                 | 1            | Venturi Tube Kit  |
|            |          | Checking Valve Core    |              |                   |
|            |          | Checking Valve Spring  |              |                   |
|            |          | Nozzle                 |              |                   |
|            |          | O-Ring                 |              |                   |
|            |          | Venturi Tube           |              |                   |
| O-Ring     |          |                        |              |                   |
| 34         |          | Pump Head              | 1            |                   |
| 35         | 7101359  | Thermal Relief Valve   | 1            |                   |

## 510003 PUMP DRAWING PARTS LIST

| ITEM | PART NO. | DESCRIPTION              | QTY PER PUMP | COMMENT                      |
|------|----------|--------------------------|--------------|------------------------------|
| 1    |          | Case                     | 1            |                              |
| 2    |          | Oil Seal                 | 1            |                              |
| 3    |          | Thrusting Bearing 2      | 1            |                              |
| 4    |          | Back Ring, Wobble Plate  | 1            |                              |
|      |          | O-Ring                   | 1            |                              |
|      |          | Wobble Plate             | 1            |                              |
| 5    |          | Thrusting Bearing 1      | 1            |                              |
| 6    |          | Clip                     | 3            |                              |
| 7    |          | Spring Base              | 3            |                              |
| 8    |          | Plunger                  | 3            |                              |
| 9    |          | Spring, Plunger          | 3            |                              |
| 10   |          | O-Ring                   | 1            |                              |
| 11   |          | Base, Plunger            | 1            |                              |
| 12   | 7105741  | Oil Seal                 | 3            | Oil Seal Kit                 |
| 13   |          | Back Ring                | 3            |                              |
| 14   | 7106627  | High Pressure Water Seal | 3            | Water Seal Kit               |
|      |          | Back Ring                |              |                              |
|      |          | O-Ring                   |              |                              |
|      |          | Low Pressure Water Seal  |              |                              |
| 15   | 7106643  | Back Ring                | 3            |                              |
| 16   | 7104223  | Valve Case               | 6            | Valve Kit (INLET AND OUTLET) |
|      |          | Spring                   |              |                              |
|      |          | Valve Plate              |              |                              |
|      |          | Valve Seat               |              |                              |
|      |          | O-Ring                   |              |                              |
| 17   | 7106644  | O-Ring                   | 1            |                              |
| 18   | 7108157  | Boost Valve Case         | 1            | Boost Plug Kit               |
|      |          | Boost Valve Spring       |              |                              |
|      |          | Boost Valve Pole         |              |                              |
|      |          | Boost Valve Plate        |              |                              |
|      |          | O-Ring                   |              |                              |
| 19   | 7106645  | O-Ring                   | 3            |                              |
| 20   | 7106646  | Plug                     | 3            |                              |
| 21   | 7106647  | Plug                     | 2            |                              |
| 22   | 7106648  | Screw                    | 3            |                              |
| 23   | 7106649  | Screw                    | 3            |                              |

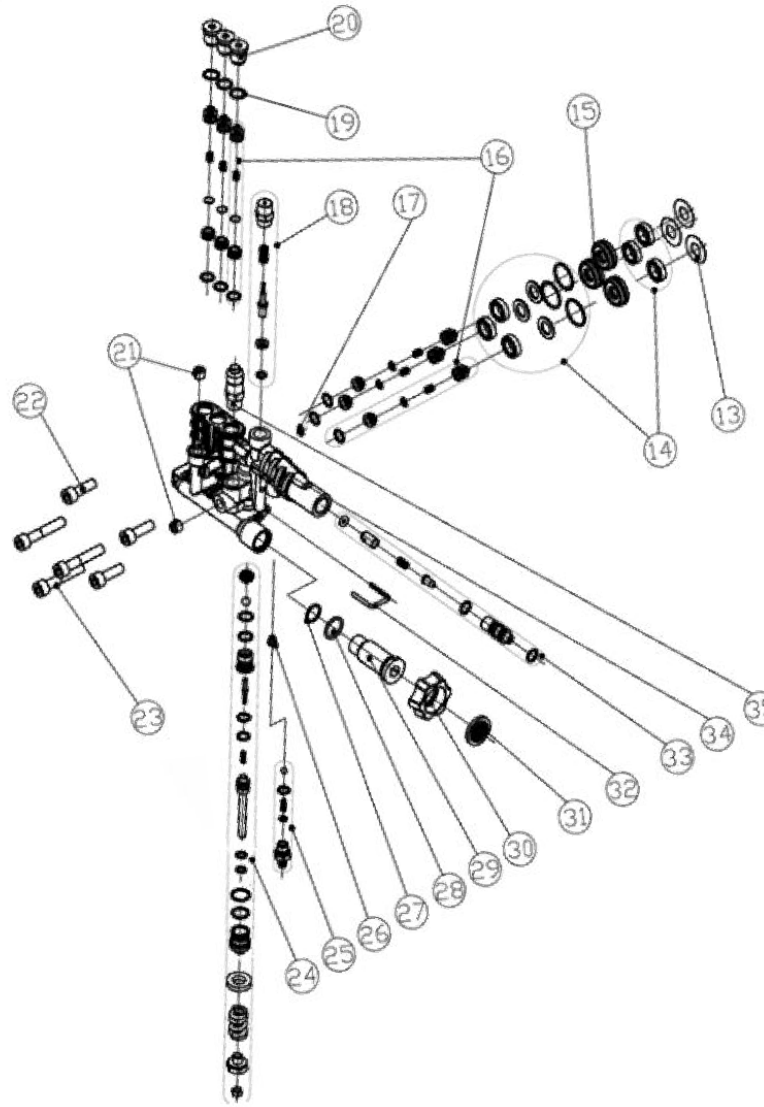
## 510003 PUMP DRAWING PARTS LIST

| ITEM       | PART NO. | DESCRIPTION            | QTY PER PUMP | COMMENT           |
|------------|----------|------------------------|--------------|-------------------|
| 24         | 7104226  | Nut                    | 1            | Unloader Kit      |
|            |          | Adjusting Nut          |              |                   |
|            |          | Spring                 |              |                   |
|            |          | Seating Ring           |              |                   |
|            |          | Valve Sheath           |              |                   |
|            |          | O-Ring                 |              |                   |
|            |          | O-Ring                 |              |                   |
|            |          | Checking Ring          |              |                   |
|            |          | O-Ring                 |              |                   |
|            |          | Valve Pole             |              |                   |
|            |          | Spring                 |              |                   |
|            |          | Checking Ring          |              |                   |
|            |          | O-Ring                 |              |                   |
|            |          | Pin                    |              |                   |
|            |          | Upper Seat             |              |                   |
|            |          | Checking Ring          |              |                   |
|            |          | O-Ring                 |              |                   |
| Steel Ball |          |                        |              |                   |
| Back Seat  |          |                        |              |                   |
| 25         | 7104228  | Nozzle                 | 1            | Soap Injector Kit |
|            |          | O-Ring                 |              |                   |
|            |          | O-Ring                 |              |                   |
|            |          | Steel Ball             |              |                   |
|            |          | Spring                 |              |                   |
| 26         | 7106650  | Venturi Tube Back Ring | 1            |                   |
| 27         | 7106651  | O-Ring                 | 1            |                   |
| 28         | 7106652  | O-Ring                 | 1            |                   |
| 29         | 7106653  | Inlet Connector        | 1            |                   |
| 30         | 7105705  | Garden Hose Nut        | 1            |                   |
| 31         | 7000123  | Filter Gasket          | 1            |                   |
| 32         | 7106655  | U-Pin                  | 1            |                   |
| 33         | 7106630  | O-Ring                 | 1            | Venturi Tube Kit  |
|            |          | Checking Valve Core    |              |                   |
|            |          | Checking Valve Spring  |              |                   |
|            |          | Nozzle                 |              |                   |
|            |          | O-Ring                 |              |                   |
|            |          | Venturi Tube           |              |                   |
| O-Ring     |          |                        |              |                   |
| 34         |          | Pump Head              | 1            |                   |
| 35         | 7101359  | Thermal Relief Valve   | 1            |                   |



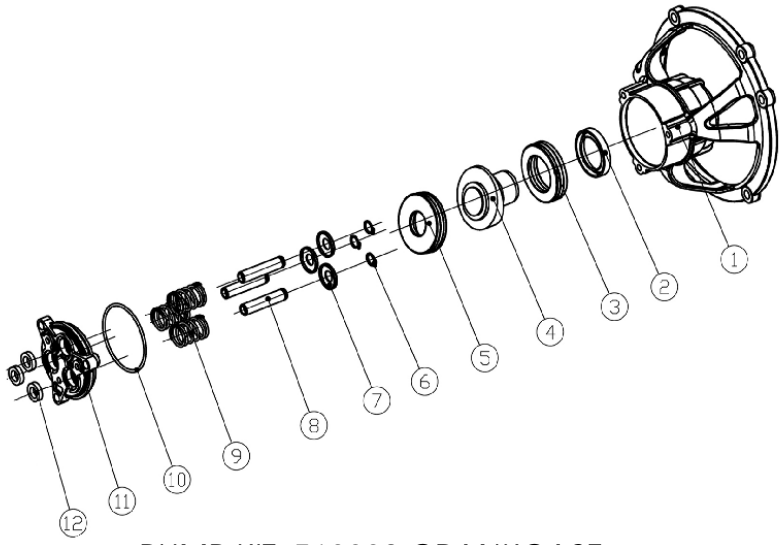
PUMP KIT, 510001 CRANKCASE  
PART NO. 7107339

| 510003 PUMP DRAWING PARTS LIST |          |                         |     |              |
|--------------------------------|----------|-------------------------|-----|--------------|
| ITEM                           | PART NO. | DESCRIPTION             | QTY | COMMENT      |
| 1                              |          | Case                    | 1   |              |
| 2                              |          | Oil Seal                | 1   |              |
| 3                              |          | Thrusting Bearing 2     | 1   |              |
| 4                              |          | Back Ring, Wobble Plate | 1   |              |
|                                |          | O-Ring                  | 1   |              |
|                                |          | Wobble Plate            | 1   |              |
| 5                              |          | Thrusting Bearing 1     | 1   |              |
| 6                              |          | Clip                    | 3   |              |
| 7                              |          | Spring Base             | 3   |              |
| 8                              |          | Plunger                 | 3   |              |
| 9                              |          | Spring, Plunger         | 3   |              |
| 10                             |          | O-Ring                  | 1   |              |
| 11                             |          | Base, Plunger           | 1   |              |
| 12                             | 7106662  | Oil Seal                | 3   | Oil Seal Kit |



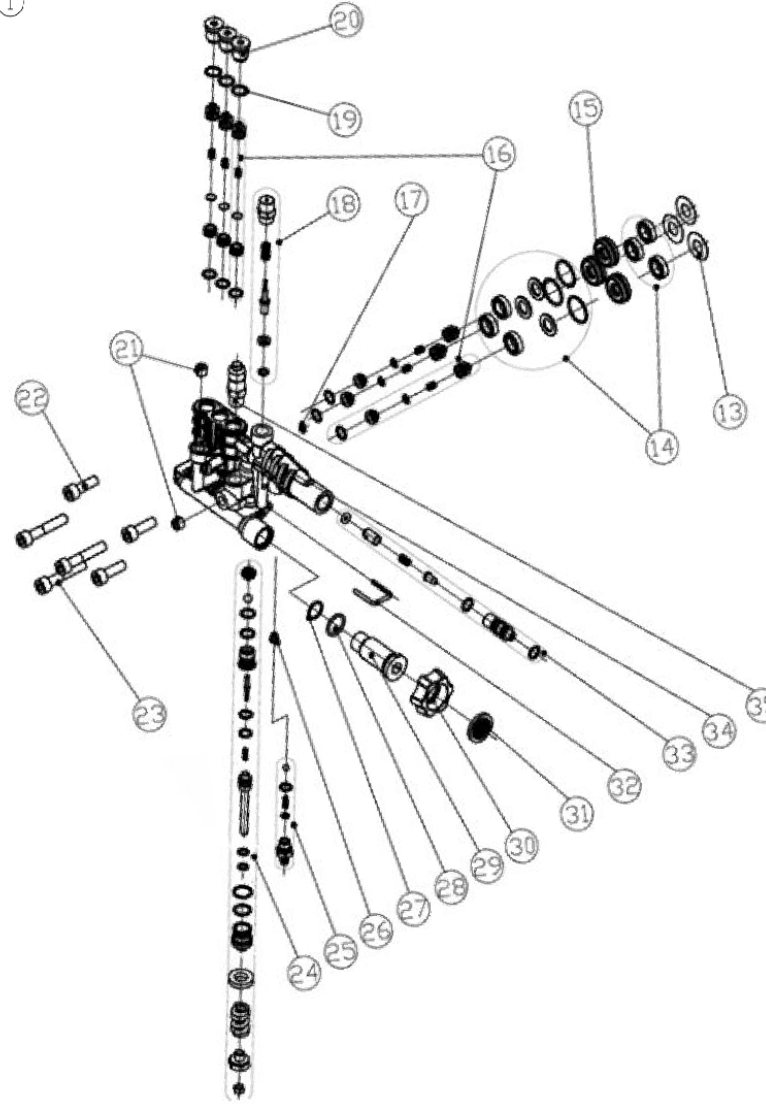
PUMP KIT, 510001 MANIFOLD  
PART NO. 7107340

| 510001 PUMP DRAWING PARTS LIST |          |                          |     |                              |
|--------------------------------|----------|--------------------------|-----|------------------------------|
| ITEM                           | PART NO. | DESCRIPTION              | QTY | COMMENT                      |
| 13                             |          | Back Ring                | 3   |                              |
| 14                             | 7106627  | High Pressure Water Seal |     |                              |
|                                |          | Back Ring                | 3   | Water Seal Kit               |
|                                |          | O-Ring                   |     |                              |
|                                |          | Low Pressure Water Seal  |     |                              |
| 15                             | 7106643  | Back Ring                | 3   |                              |
| 16                             | 7104223  | Valve Case               |     |                              |
|                                |          | Spring                   |     |                              |
|                                |          | Valve Plate              | 6   | Valve Kit (INLET AND OUTLET) |
|                                |          | Valve Seat               |     |                              |
|                                |          | O-Ring                   |     |                              |
| 17                             | 7106644  | O-Ring                   | 1   |                              |
| 18                             | 7108157  | Boost Valve Case         |     |                              |
|                                |          | Boost Valve Spring       |     |                              |
|                                |          | Boost Valve Pole         | 1   | Boost Plug Kit               |
|                                |          | Boost Valve Plate        |     |                              |
|                                |          | O-Ring                   |     |                              |
| 19                             | 7106645  | O-Ring                   | 3   |                              |
| 20                             | 7106646  | Plug                     | 3   |                              |
| 21                             | 7106647  | Plug                     | 2   |                              |
| 22                             | 7106648  | Screw                    | 3   |                              |
| 23                             | 7106649  | Screw                    | 3   |                              |
| 24                             | 7104226  | Nut                      |     |                              |
|                                |          | Adjusting Nut            |     |                              |
|                                |          | Spring                   |     |                              |
|                                |          | Seating Ring             |     |                              |
|                                |          | Valve Sheath             |     |                              |
|                                |          | O-Ring                   |     |                              |
|                                |          | O-Ring                   |     |                              |
|                                |          | Checking Ring            |     |                              |
|                                |          | O-Ring                   |     |                              |
|                                |          | Valve Pole               | 1   | Unloader Kit                 |
|                                |          | Spring                   |     |                              |
|                                |          | Checking Ring            |     |                              |
|                                |          | O-Ring                   |     |                              |
|                                |          | Pin                      |     |                              |
|                                |          | Upper Seat               |     |                              |
|                                |          | Checking Ring            |     |                              |
|                                |          | O-Ring                   |     |                              |
|                                |          | Steel Ball               |     |                              |
|                                |          | Back Seat                |     |                              |
| 25                             | 7104228  | Nozzle                   |     |                              |
|                                |          | O-Ring                   | 1   | Soap Injector Kit            |
|                                |          | O-Ring                   |     |                              |
|                                |          | Steel Ball               |     |                              |
|                                |          | Spring                   |     |                              |
| 26                             | 7106650  | Venturi Tube Back Ring   | 1   |                              |
| 27                             | 7106651  | O-Ring                   | 1   |                              |
| 28                             | 7106652  | O-Ring                   | 1   |                              |
| 29                             | 7106653  | Inlet Connector          | 1   |                              |
| 30                             | 7105705  | Garden Hose Nut          | 1   |                              |
| 31                             | 7000123  | Filter Gasket            | 1   |                              |
| 32                             | 7106655  | U-Pin                    | 1   |                              |
| 33                             | 7106630  | O-Ring                   |     |                              |
|                                |          | Checking Valve Core      |     |                              |
|                                |          | Checking Valve Spring    |     |                              |
|                                |          | Nozzle                   | 1   | Venturi Tube Kit             |
|                                |          | O-Ring                   |     |                              |
|                                |          | Venturi Tube             |     |                              |
|                                |          | O-Ring                   |     |                              |
| 34                             |          | Pump Head                | 1   |                              |
| 35                             | 7101359  | Thermal Relief Valve     | 1   |                              |



PUMP KIT, 510003 CRANKCASE  
PART NO. 7107341

| 510003 PUMP DRAWING PARTS LIST |          |                         |     |              |
|--------------------------------|----------|-------------------------|-----|--------------|
| ITEM                           | PART NO. | DESCRIPTION             | QTY | COMMENT      |
| 1                              |          | Case                    | 1   |              |
| 2                              |          | Oil Seal                | 1   |              |
| 3                              |          | Thrusting Bearing 2     | 1   |              |
| 4                              |          | Back Ring, Wobble Plate | 1   |              |
|                                |          | O-Ring                  | 1   |              |
|                                |          | Wobble Plate            | 1   |              |
| 5                              |          | Thrusting Bearing 1     | 1   |              |
| 6                              |          | Clip                    | 3   |              |
| 7                              |          | Spring Base             | 3   |              |
| 8                              |          | Plunger                 | 3   |              |
| 9                              |          | Spring, Plunger         | 3   |              |
| 10                             |          | O-Ring                  | 1   |              |
| 11                             |          | Base, Plunger           | 1   |              |
| 12                             | 7106662  | Oil Seal                | 3   | Oil Seal Kit |



PUMP KIT, 510003 MANIFOLD  
PART NO. 7107342

| 510003 PUMP DRAWING PARTS LIST |          |                          |     |                                 |
|--------------------------------|----------|--------------------------|-----|---------------------------------|
| ITEM                           | PART NO. | DESCRIPTION              | QTY | COMMENT                         |
| 13                             |          | Back Ring                | 3   |                                 |
| 14                             | 7106627  | High Pressure Water Seal |     | Water Seal Kit                  |
|                                |          | Back Ring                | 3   |                                 |
|                                |          | Low Pressure Water Seal  |     |                                 |
| 15                             | 7106643  | Back Ring                | 3   |                                 |
| 16                             | 7104223  | Valve Case               |     | Valve Kit<br>(INLET AND OUTLET) |
|                                |          | Spring                   | 6   |                                 |
|                                |          | Valve Plate              |     |                                 |
|                                |          | Valve Seat               |     |                                 |
|                                |          | O-Ring                   |     |                                 |
| 17                             | 7106644  | O-Ring                   | 1   |                                 |
| 18                             | 7108157  | Boost Valve Case         |     | Boost Plug Kit                  |
|                                |          | Boost Valve Spring       | 1   |                                 |
|                                |          | Boost Valve Pole         |     |                                 |
|                                |          | Boost Valve Plate        |     |                                 |
|                                |          | O-Ring                   |     |                                 |
| 19                             | 7106645  | O-Ring                   | 3   |                                 |
| 20                             | 7106646  | Plug                     | 3   |                                 |
| 21                             | 7106647  | Plug                     | 2   |                                 |
| 22                             | 7106648  | Screw                    | 3   |                                 |
| 23                             | 7106649  | Screw                    | 3   |                                 |
| 24                             | 7104226  | Nut                      |     | Unloader Kit                    |
|                                |          | Adjusting Nut            |     |                                 |
|                                |          | Spring                   |     |                                 |
|                                |          | Seating Ring             |     |                                 |
|                                |          | Valve Sheath             |     |                                 |
|                                |          | O-Ring                   |     |                                 |
|                                |          | O-Ring                   |     |                                 |
|                                |          | Checking Ring            |     |                                 |
|                                |          | O-Ring                   |     |                                 |
|                                |          | Valve Pole               |     |                                 |
|                                |          | Spring                   |     |                                 |
|                                |          | Checking Ring            |     |                                 |
|                                |          | O-Ring                   |     |                                 |
|                                |          | Pin                      |     |                                 |
|                                |          | Upper Seat               |     |                                 |
|                                |          | Checking Ring            |     |                                 |
|                                |          | O-Ring                   |     |                                 |
|                                |          | Steel Ball               |     |                                 |
|                                |          | Back Seat                |     |                                 |
|                                |          | Nozzle                   |     |                                 |
| 25                             | 7104228  | O-Ring                   |     | Soap Injector Kit               |
|                                |          | O-Ring                   | 1   |                                 |
|                                |          | Steel Ball               |     |                                 |
|                                |          | Spring                   |     |                                 |
| 26                             | 7106650  | Venturi Tube Back Ring   | 1   |                                 |
| 27                             | 7106651  | O-Ring                   | 1   |                                 |
| 28                             | 7106652  | O-Ring                   | 1   |                                 |
| 29                             | 7106653  | Inlet Connector          | 1   |                                 |
| 30                             | 7105705  | Garden Hose Nut          | 1   |                                 |
| 31                             | 7000123  | Filter Gasket            | 1   |                                 |
| 32                             | 7106655  | U-Pin                    | 1   |                                 |
| 33                             | 7106630  | O-Ring                   |     | Venturi Tube Kit                |
|                                |          | Checking Valve Core      | 1   |                                 |
|                                |          | Checking Valve Spring    |     |                                 |
|                                |          | Nozzle                   |     |                                 |
|                                |          | O-Ring                   |     |                                 |
|                                |          | Venturi Tube             |     |                                 |
|                                |          | O-Ring                   |     |                                 |
| 34                             |          | Pump Head                | 1   |                                 |
| 35                             | 7101359  | Thermal Relief Valve     | 1   |                                 |