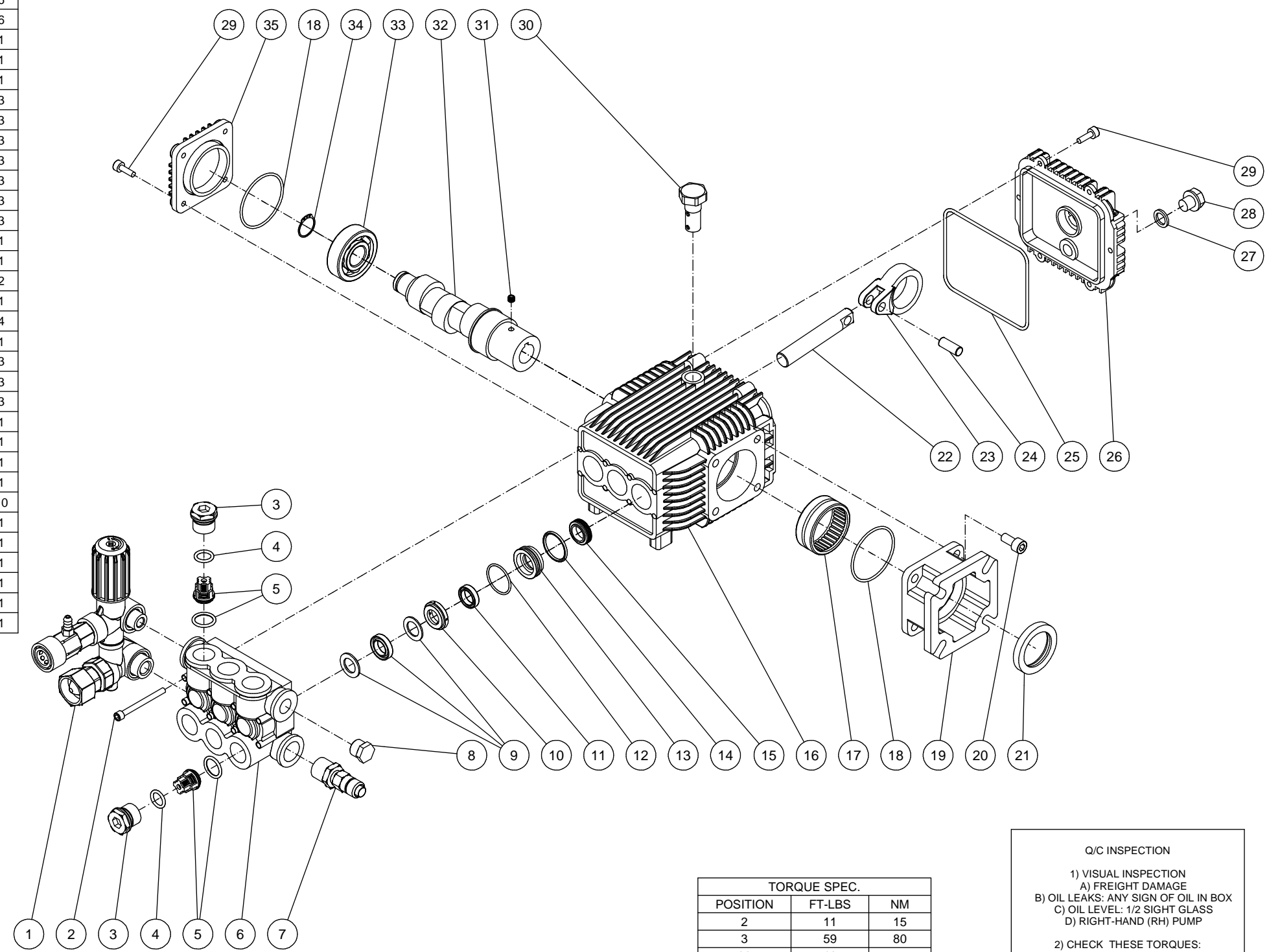


ITEM	DESCRIPTION	PART #	VENDOR	P/L	QTY
1	UNLOADER ASSY - B13233	8-0632	B13233		1
2	BOLT - M6-1.00P x 55mm	27-0898	B12011		8
3	VALVE PLUG - M22-1.50P	39-0231	B12004		6
4	O-RING - Ø18.38mm X Ø2.62mm	25-0622	B12005		6
5	VALVE ASSEMBLY W/O-RING	70-0502	B12002		6
6	MANIFOLD HEAD - BRASS	46-1503	B12001		1
7	VALVE - THERMAL RELIEF 1/2M 145F	22-0005	N/A		1
8	PLUG - BRASS 3/8-19BSPP x 17mm	39-0102	AR1989600		1
9	HIGH PRESSURE PACKING (SEE 70-0501)	70-0501	B12013	SEE KIT	3
10	SEAL COMPACTION RING - BRASS	46-1311	B12008		3
11	LOW PRESSURE SEAL - Ø22mm X Ø15mm X 5mm (SEE 70-0501)	70-0501	B12012	SEE KIT	3
12	O-RING - Ø26.7mm X Ø1.78mm (SEE 70-0501)	70-0501	B12007	SEE KIT	3
13	RETAINER RING - LP	46-1312	B12006		3
14	O-RING Ø15 X 2.5MM	25-0663	B12115		3
15	OIL SEAL - Ø24mm X Ø15mm X 6mm	46-1313	B11018		3
16	CRANKCASE - ALUMINUM	N/A	B11011		1
17	NEEDLE BEARING - Ø52mm X Ø43mm X 20mm	48-0096	B11027		1
18	O-RING - Ø51.8mm X Ø2.2mm	25-0603	B11005		2
19	FLANGE	46-1314	B11006		1
20	HSHCS - M8-1.25P X 16MM	27-8431	B11030		4
21	OIL SEAL - Ø50mm X Ø36mm X 7mm	26-0320	B11008		1
22	PISTON- CERAMIC COATED	46-1504	B11011		3
23	CONNECTING ROD - Ø33mm	N/A	B11009		3
24	PISTON - WRIST PIN	46-1505	B11010		3
25	O-RING - 105mm X Ø2.62mm	25-0604	B11084		1
26	CRANKCASE COVER W/SIGHT GLASS	46-1317	B11088		1
27	GASKET - Ø17.5mm X Ø12mm X 2mm	26-0322	N61015		1
28	DRAIN PLUG - M13-1.30P X 10.0mm	39-0232	N61014		1
29	SCREW - M6-1.00P X 16.0mm	27-8401	B11029		10
30	DIPSTICK COMPLETE W/ O-RING	70-0503	B41017		1
31	HSSS - M6-1.00P X 6 MM UNI5923	27-8886	AR820440		1
32	CRANKSHAFT - STROKE 6.50mm	N/A	B11051		1
33	BALL BEARING - 6304	48-0063	B11026		1
34	SNAP RING - EXTERNAL - Ø19mm	46-1506	B11028		1
35	COVER, CRANKSHAFT	46-1507	B11004		1

PUMP ASSEMBLY				SHAFT	RPM	MAX	MAX	OIL			SHAFT DIA I.D.
Mi-T-M#	VENDOR#	BORE	STROKE	MARKED	RATED	GPM/LPM	PSI/BAR	oz/mL	INLET	OUTLET	in/mm
3-0297	1506.5M	15mm	6.5mm	#6.5	3400	2.50/9.46	3000/206.84	16.9/500	1/2-14 BSPP	3/8"NPT	0.75/19.05



TORQUE SPEC.		
POSITION	FT-LBS	NM
2	11	15
3	59	80
20	18	24.4
30	7.4	10

Q/C INSPECTION

1) VISUAL INSPECTION  
A) FREIGHT DAMAGE  
B) OIL LEAKS: ANY SIGN OF OIL IN BOX  
C) OIL LEVEL: 1/2 SIGHT GLASS  
D) RIGHT-HAND (RH) PUMP

2) CHECK THESE TORQUES:  
A) HEAD BOLTS - 11 FT-LBS  
B) VALVE CAPS - 59 FT-LBS

3) ACL 6.5  
LEVEL I

REPLACEMENT KITS					
KIT #	VENDOR #	DESCRIPTION	ITEMS	# OF ASSEMBLIES	# OF CYLINDERS
70-0501	B11102	KITS - PACKINGS	9, 11, 12	3, 3, 3	3
70-0502	B11106	KITS - VALVES W/ O-RING	5	6	3

# Mi-T-M Corporation

SCALE: NTS      DATE: 8/26/14      DRAWING SIZE: B      APPD:      DRAWN BY: JDK

## PUMP - 1506.5M

DRAWING/PART NO:  
3-0297

M:\Drawings\Part Numbers\03\3-0297.iam