

ITEM	DESCRIPTION	PART #	VENDOR	P/L	QTY
1	CAP VALVE	46-0889	98222800		6
2	O-RING 20.69 X 2.62MM	25-0012	90384700		6
3	VALVE ASSEMBLY (SEE KIT 70-0009)	22-0056	36703201	SEE KIT	6
4	MANIFOLD	46-0890	47121741		1
5	WASHER-ZI M15 X M8 X 1.5MM	28-1039	96702000		8
6	HSHCS-M8-1.25 X 70MM	27-8185	99320600		8
7	WASHER-ALUM M27 X M21 X 1.5MM	28-1038	96751400		2
8	PLUG/HEX - BRASS 1/2-14 BSPP-F	39-0019	98217600		2
9	WASHER - ALUM - O.D. 22 X I.D. 17.2 X 1.5mm	28-1002	12401900		2
10	PLUG/HEX - BRASS 3/8-19 BSPP-F	39-0018	98210000		2
11	HEAD RING (SEE KIT 70-0030 & 852-0122)	70-0030	47100051	SEE KIT	3
12	V-PACKING 20 X 35 X 7.5/4.5 (SEE KIT 70-0147 & 852-0122)	26-0098	90270500	SEE KIT	3
13	O-RING (SEE KIT 70-0147, 70-0148 & 852-0122)	25-0207	90270400	SEE KIT	3
14	INTERMEDIATE RETAINER-20MM (SEE KIT 70-0148)	46-0659	47216970	SEE KIT	3
15	LOW PRESSURE SEAL - 20mm (SEE KIT 70-0147 & 852-0122)	26-0197	90271000	SEE KIT	3
16	LOW PRESSURE SEAL RETAINER - BRASS	46-0057	47080570		3
17	O-RING - 34.65 X 1.78mm (SEE KIT 852-0122)	25-0015	90361600	SEE KIT	3
18	OIL SEAL - 22 X 32 X 5.5	26-0047	90162500		3
19	BUSHING/BEARING - 22 X 25 X 30mm	9-0029	90912600		3
20	HSHCS - M8-1.25P X 16MM	27-8431	99303900		8
21	CRANKCASE COVER OPEN	46-0296	47150022		1
22	SHIM	46-0113	97567800		1
23	OIL SEAL - 30 X 55 X 7	26-0049	90164800		1
24	O-RING 2-11/16 X 2-7/8	25-0013	90391300		2
25	BEARING TAPERED ROLLER	48-0012	91837800		2
26	PUMP KEY 7MM X 8MM X 35MM	43-0048	91489000		1
27	CRANKSHAFT	46-0050	47021735		1
28	RETAINING RING	46-0103	90055700		6
29	PIN/CONNECTING ROD	43-0032	97738000		3
30	INDICATOR - OIL LEVEL - G 3/4	46-0114	97596800		1
31	PLUG/HEX - BRASS G1/4	39-0017	98204100		1
32	O-RING 7/16 X 9/16	25-0014	90358500		4
33	HSHCS - M6-1.0P X 30MM	27-8404	99191200		5
34	CRANKCASE COVER	46-0295	47160122		1
35	O-RING - 133.02 X 2.62mm	25-0339	90392200		1
36	HSHCS - M8 - 1.25P x 35mm	27-8435	99309900		6
37	LOCKWASHER - ZI M8	29-0154	96701400		6
38	CONNECTING ROD	46-0051	47030001		3
39	PISTON GUIDE	46-0056	47050554		3
40	SLINGER WASHER	46-0146	96728600		3
41	PLUNGER CERAMIC 14 X 20 X 50 LG	46-0052	47040409		3
42	ANTI EXTRUSION RING	46-0109	660067		3
43	WASHER-COPPER 7/32 X 3/8 X .02	28-0400	96728000		3
44	NUT/PISTON	46-0069	47219566		3
45	CRANKCASE	46-0047	47010522		1
46	OIL DIP STICK	46-0144	98210600		1
47	CRANKCASE COVER CLOSED	46-0336	47150122		1

Q/C INSPECTION

1) VISUAL INSPECTION
A) FREIGHT DAMAGE
B) OIL LEAKS: ANY SIGN OF OIL IN BOX
C) OIL LEVEL: 1/2 SIGHT GLASS
D) RIGHT-HAND (RH) PUMP

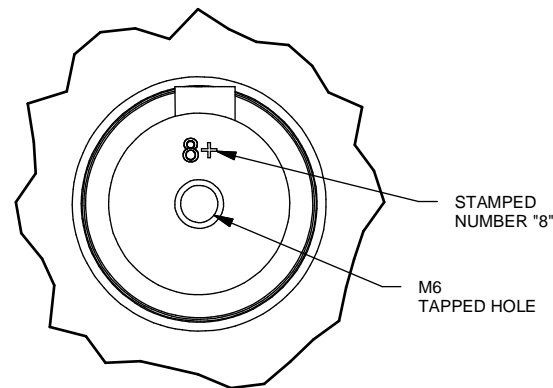
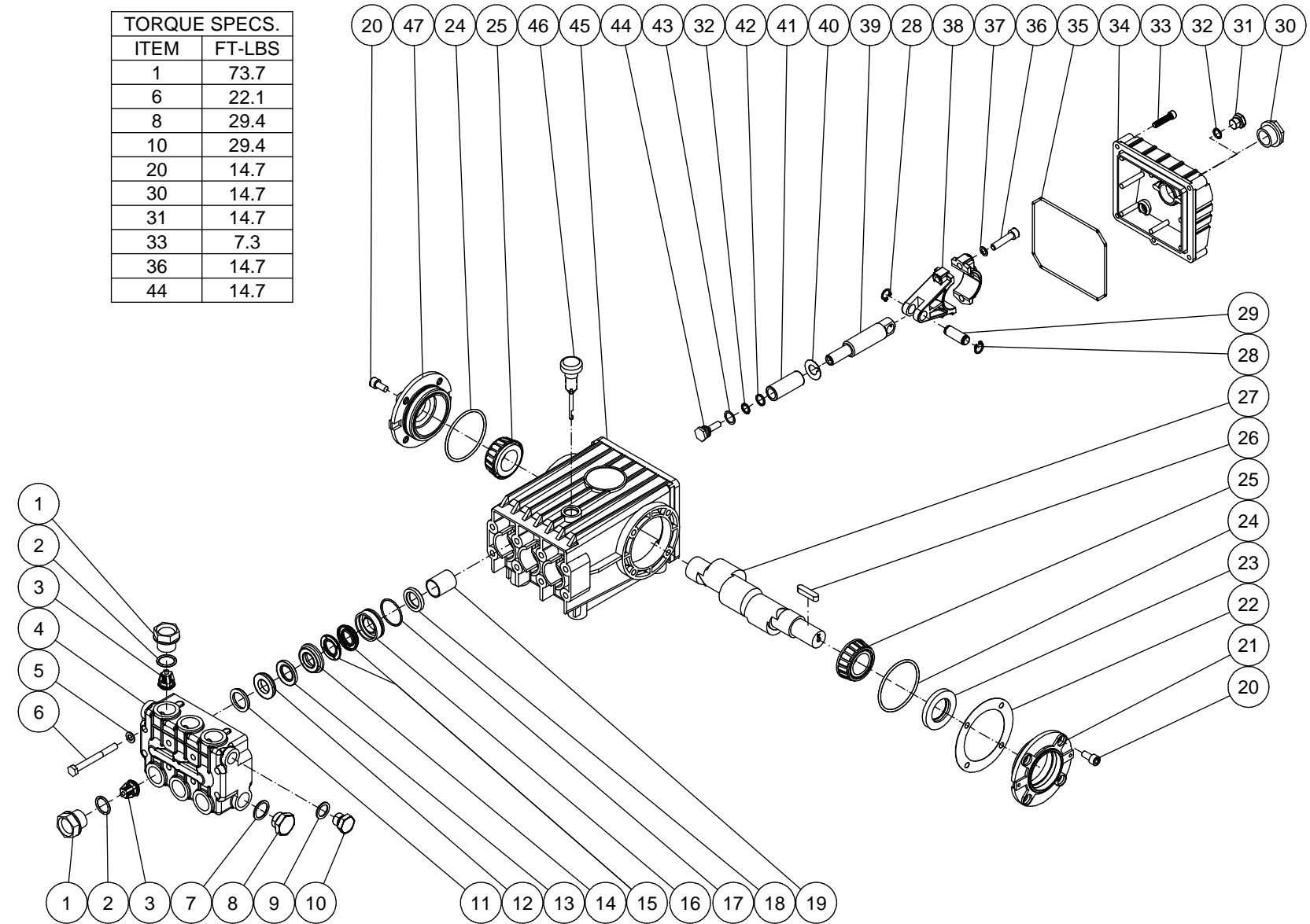
2) CHECK THESE TORQUES:
A) HEAD BOLTS - 22 FT-LBS
B) VALVE CAPS - 73.7 FT-LBS
C) PLUNGER RETAINER - 15 FT-LBS
D) CONNECTING ROD SCREWS - 15 FT-LBS

3) IDENTIFY BEARING: BEARING/TAPPER ROLLER # 32206A
MUST BE OF PREMIUM QUALITY SKF, FAG OR TIMKEN

4) ACL 6.5
LEVEL I

Mi-T-M #	VENDOR #	BORE	STROKE	MAX RPM	MAX GPM	MAX PSI	OIL	INLET	OUTLET	SHAFT DIA.
3-0202	PW-3555	20mm	16mm	1450	5.60	3500	40.6 oz	1/2"-14 BSPP-F	3/8"-19 BSPP-F	24mm

TORQUE SPECS.	
ITEM	FT-LBS
1	73.7
6	22.1
8	29.4
10	29.4
20	14.7
30	14.7
31	14.7
33	7.3
36	14.7
44	14.7



PUMP IDENTIFICATION
END OF CRANKSHAFT

COLD WATER SERIAL #10375000
HOT WATER SERIAL #15045000

REPLACEMENT KITS					
Mi-T-M KIT#	GENERAL KIT #	DESCRIPTION	ITEMS	# OF ASSEMBLIES	# OF CYLINDERS
70-0009	KIT #1	VALVES	3	6	3
70-0030	KIT #7	HEAD RING	11	3	3
70-0147	KIT #69	V-PACKING	12, 13, 15	3	3
70-0148	KIT #71	INTERMEDIATE RETAINER	13, 14	3	3
852-0122	KIT #7 & #69	V-PACKING ASSY	11-13, 15, 17	3	3

Mi-T-M Corporation

PUMP - 5.5 GPM @ 3500 PSI

SCALE: NTS DATE: 4/29/14 DRAWING SIZE: B APP'D: DRAWN BY: CH

DRAWING/PART NO:
3-0202