

PowerBOSS™

Illustrated Parts List

Questions? Help is just a moment away!

Call: **Pressure Washer Helpline**

1-800-743-4115 M-F 8-5 CT

020309
(3000 PSI)



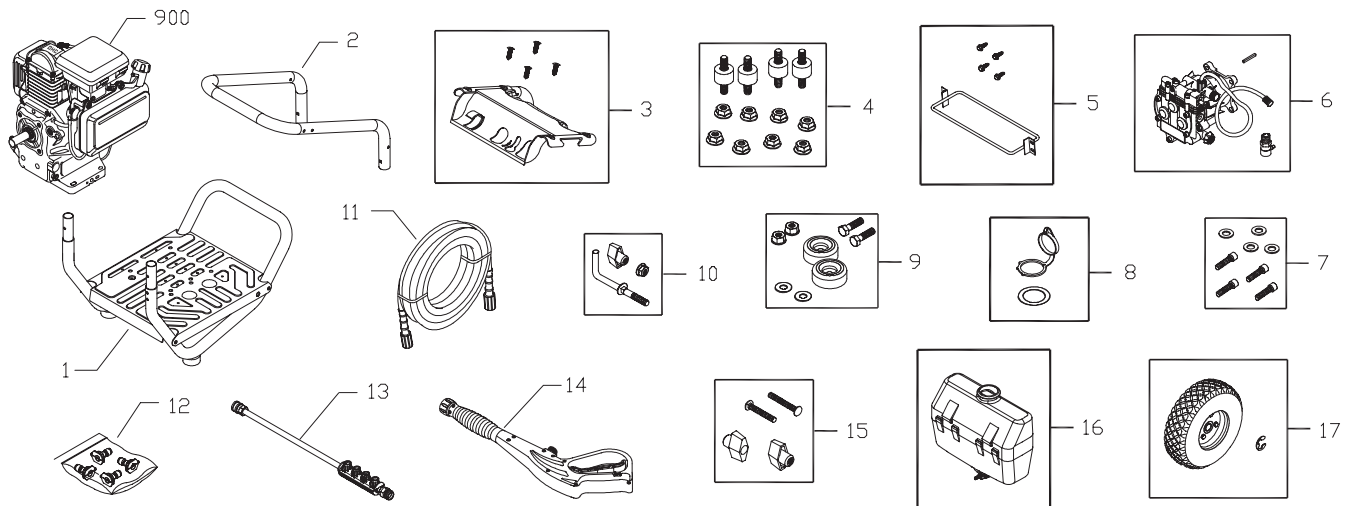
PowerBOSS™ is a trademark of Briggs & Stratton Power Products.

PowerBOSS™ es una marca registrada de Briggs & Stratton Power Products.

BRIGGS & STRATTON POWER PRODUCTS GROUP, LLC
JEFFERSON, WISCONSIN, U.S.A.

Model No. 020309 (3000 PSI (206.8 BARS) Pressure Washer) Manual No. 203789A Revision B (05/02/2007)

Exploded View and Parts List - Main Unit



| Item | Part # | Description |
|------|-----------|--------------------------------------|
| 1 | 203188GS | ASSY, Base |
| 2 | B201499GS | HANDLE |
| 3 | 203174GS | KIT, Billboard Assy, w/Decal & Clips |
| | 195964GS | Clips, Tree |
| 4 | 192134GS | KIT, Engine Mounting Hardware |
| 5 | 195856GS | KIT, Wireform |
| 6 | 198347GS | ASSY, Pump |
| | 194298GS | Valve, Thermal Relief |
| | 23139DGS | Key |
| 7 | 192131GS | KIT, Pump Mounting Hardware |
| 8 | 202763GS | KIT, Cap, Chem Tank |
| 9 | 192310GS | KIT, Vibration Mount |
| 10 | 194264GS | KIT, Hook |
| 11 | 196006GS | HOSE |
| 12 | 202514GS | KIT, Nozzle |
| | 198841GS | Nozzle, QC, Black |
| | 195983WGS | Nozzle, QC, Red |
| | 195983XGS | Nozzle, QC, Yellow |
| | 195983ZGS | Nozzle, QC, White |
| 13 | 192198GS | EXTENSION, w/Nozzle Holder |
| 14 | 199117GS | GUN |
| 15 | B2203GS | KIT, Handle Fastening |

| Item | Part # | Description |
|------|----------|------------------|
| 16 | 199229GS | ASSY, Chem, Tank |
| | 192980GS | Kit, Valve |
| 17 | 194509GS | KIT, Wheel |
| | 191265GS | E-Ring |
| 900 | § | ENGINE |

Items Not Illustrated:

| | |
|-----------|----------------------|
| 203830GS | MANUAL, Operator's |
| 87815GS | GOGGLES |
| BB3061BGS | OIL BOTTLE |
| 191267SGS | AXLE |
| 194524GS | DECAL, Honda Choke |
| 201787GS | DECAL, Honda Shroud |
| 201819GS | DECAL, Honda Recoil |
| 194256GS | KIT, Tag/Warning Srv |

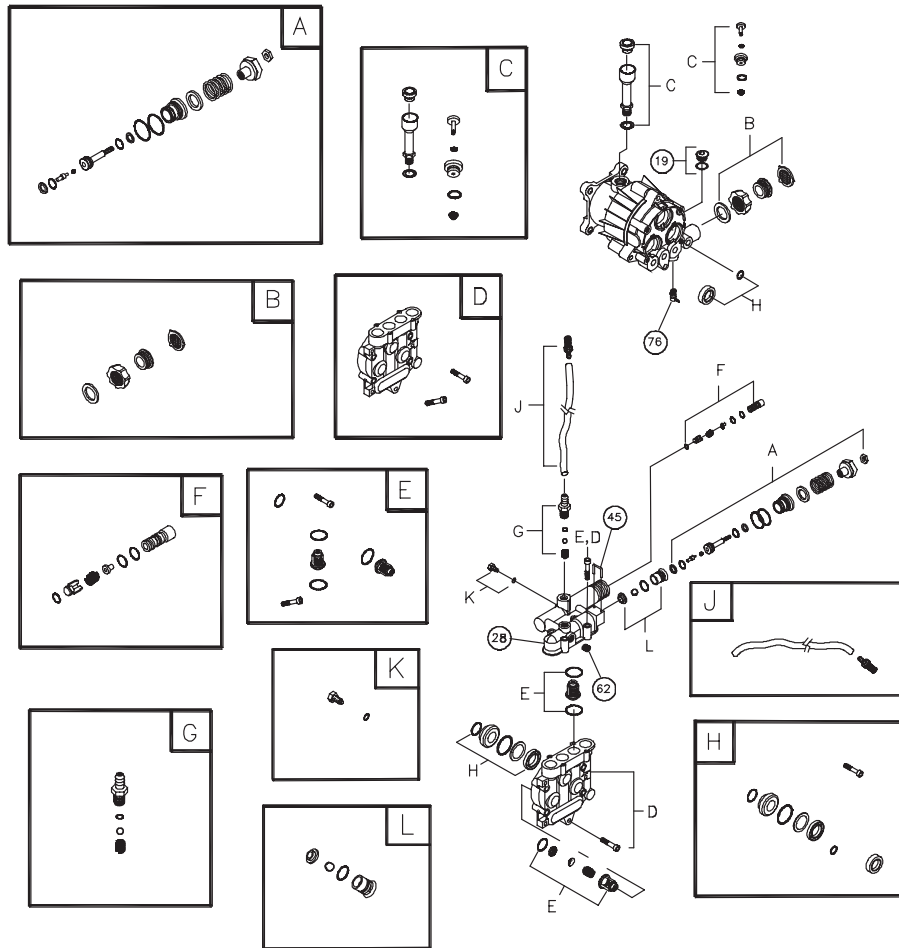
Optional Accessories

| | |
|------|-------------|
| 6048 | KIT, O-Ring |
| 6039 | PUMP SAVER |

§ - Contact Engine Manufacturer

Copyright © 2007 Briggs & Stratton Power Products Group, LLC. All rights reserved. No part of this material may be reproduced or transmitted in any form by any means without the express written permission of Briggs & Stratton Power Products Group, LLC.

Exploded View and Parts List - Pump



| Item | Part # | Description |
|------|----------|-------------------------|
| 19 | 190571GS | CAP, Oil |
| 28 | 198102GS | MANIFOLD |
| 45 | 190578GS | PIN |
| 62 | 190581GS | CAP, 1/8 |
| 76 | 194298GS | THERMAL RELIEF |
| A | 190594GS | KIT, UNLOADER |
| B | 190670GS | KIT, WATER INLET |
| C | 190669GS | KIT, BREATHER TUBE |
| D | 193808GS | KIT, HEAD BRASS |
| E | 193806GS | KIT, CHECK VALVES |
| F | 190592GS | KIT, INLET CHECK |
| G | 190593GS | KIT, CHEMICAL INJECTION |
| H | 193807GS | KIT, SEAL SET |
| J | 189971GS | KIT, CHEMICAL HOSE |
| K | 193971GS | KIT, PIPE FITTING |
| L | 193972GS | KIT, UNLOADER SEAT |

Items Not Illustrated:

| | |
|----------|--------------------------|
| 190585GS | OIL BOTTLE |
| B2384GS | FILTER, Inlet |
| 186452GS | FILTER, Inlet, Bag of 10 |

Optional Accessories

| | |
|------|-------------|
| 6039 | PUMP SAVER |
| 6048 | KIT, O-Ring |

NOTE: Item letters A - L are service kits and include all parts shown within the box.