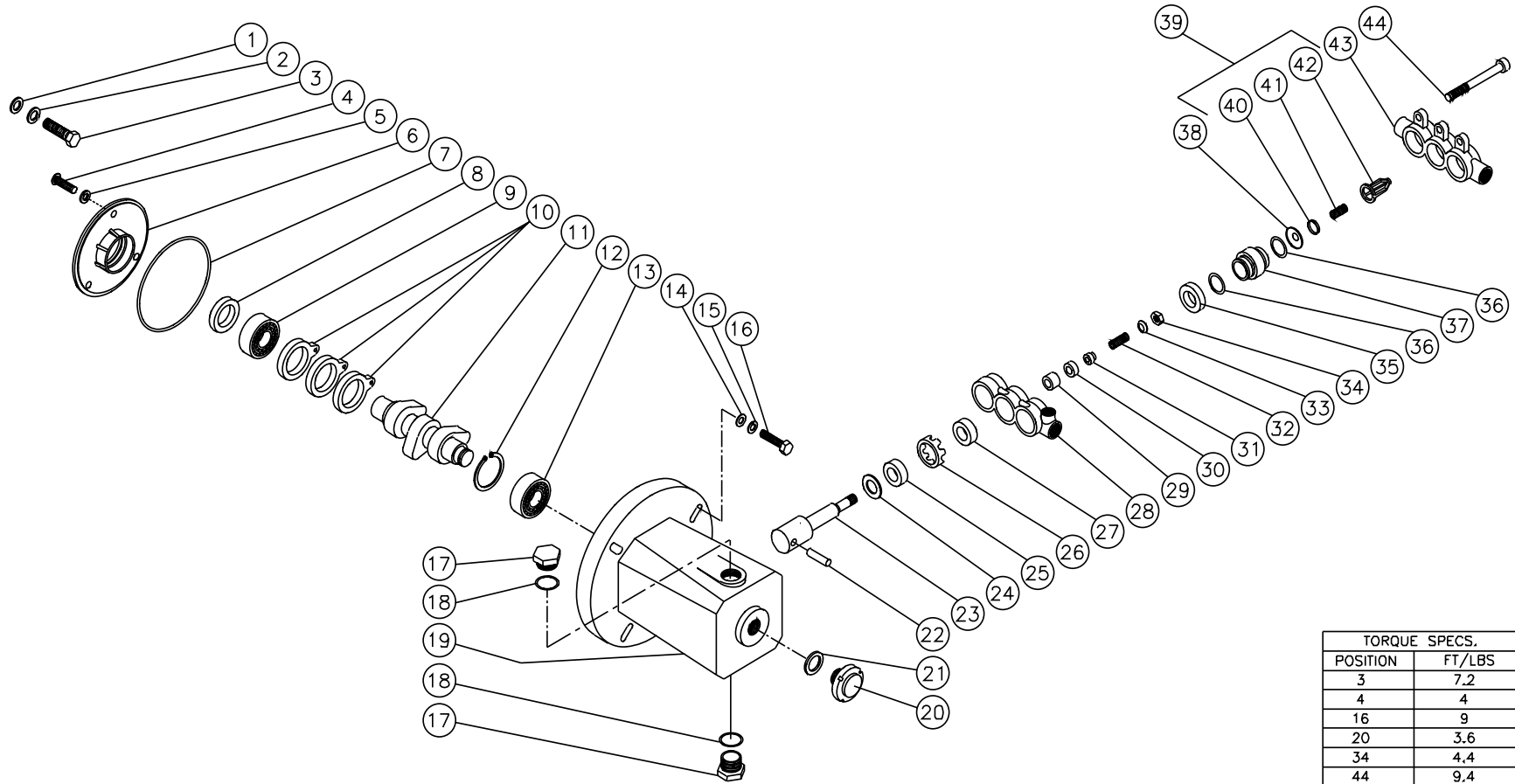


HIGH PRESSURE PUMP (3-0143)



TORQUE SPECS.	
POSITION	FT/LBS
3	7.2
4	4
16	9
20	3.6
34	4.4
44	9.4

OMPMP035-110498-BAR

HIGH PRESSURE PUMP (3-0143)								
REF #	DESCRIPTION	PART #	QTY		REF #	DESCRIPTION	PART #	QTY
1	Flatwasher	28-0003	4		25	Oil Seal	26-0156	3
2	Lockwasher	46-0483	4		26	Seal Retainer	46-0303	3
3	Bolt	27-0091	4		27	Low Pressure Seal (See 70-0129)	N/A Sep.	3
4	Bolt	46-0318	3		28	Manifold Inlet	46-0304	1
5	Flatwasher	26-0159	3		29	Plunger	46-0305	3
6	Cover-Rear	46-0297	1		30	Valve Inlet	46-0306	3
7	O-ring	25-0308	1		31	Spacer	46-0307	3
8	Oil Seal	26-0155	1		32	Spring	49-0064	3
9	Bearing-Inner	48-0027	1		33	Washer	46-0316	3
10	Connecting Rod, Bronze	46-0681	3		34	Nut	46-0317	3
11	Crankshaft	46-0680	1		35	Seal-High Pressure (See 70-0129)	N/A Sep.	3
12	Snap Ring	46-0300	1		36	O-ring (See 70-0129 or 70-0167)	N/A Sep.	6
13	Bearing-Outer	48-0028	1		37	Discharge Valve Adapter	46-0683	3
14	Flatwasher (See 70-0096)	N/A Sep.	4		38	Valve Seat	46-0682	3
15	Lockwasher (See 70-0096)	N/A Sep.	4		39	Valve Assembly (Inc. 39-41) (See 70-0167)	N/A Sep.	3
16	Bolt (See 70-0096)	N/A Sep.	4		40	Discharge Valve (See 70-0167)	N/A Sep.	3
17	Plug	39-0057	2		41	Valve Spring (See 70-0167)	N/A Sep.	3
18	O-ring	25-0199	2		42	Valve Spring Retainer (See 70-0167)	N/A Sep.	3
19	Crankcase	46-0301	1		43	Manifold Outlet	46-0311	1
20	Oil Level Gauge	22-0123	1		44	Bolt	46-0315	6
21	Gasket	26-0139	1			Bolt Mount Kit (4 each 14-16)	70-0096	
22	Piston Rod Pin	43-0063	3			Seal Kit (3 each 27, 35, 36)	70-0129	
23	Piston Rod	46-0684	3			Valve Kit (6 each 36, 3 ea. 37-39)	70-0167	
24	Washer	46-0314	3			Inlet Valve Kit (3 ea. 30-34, 36)	70-0160	