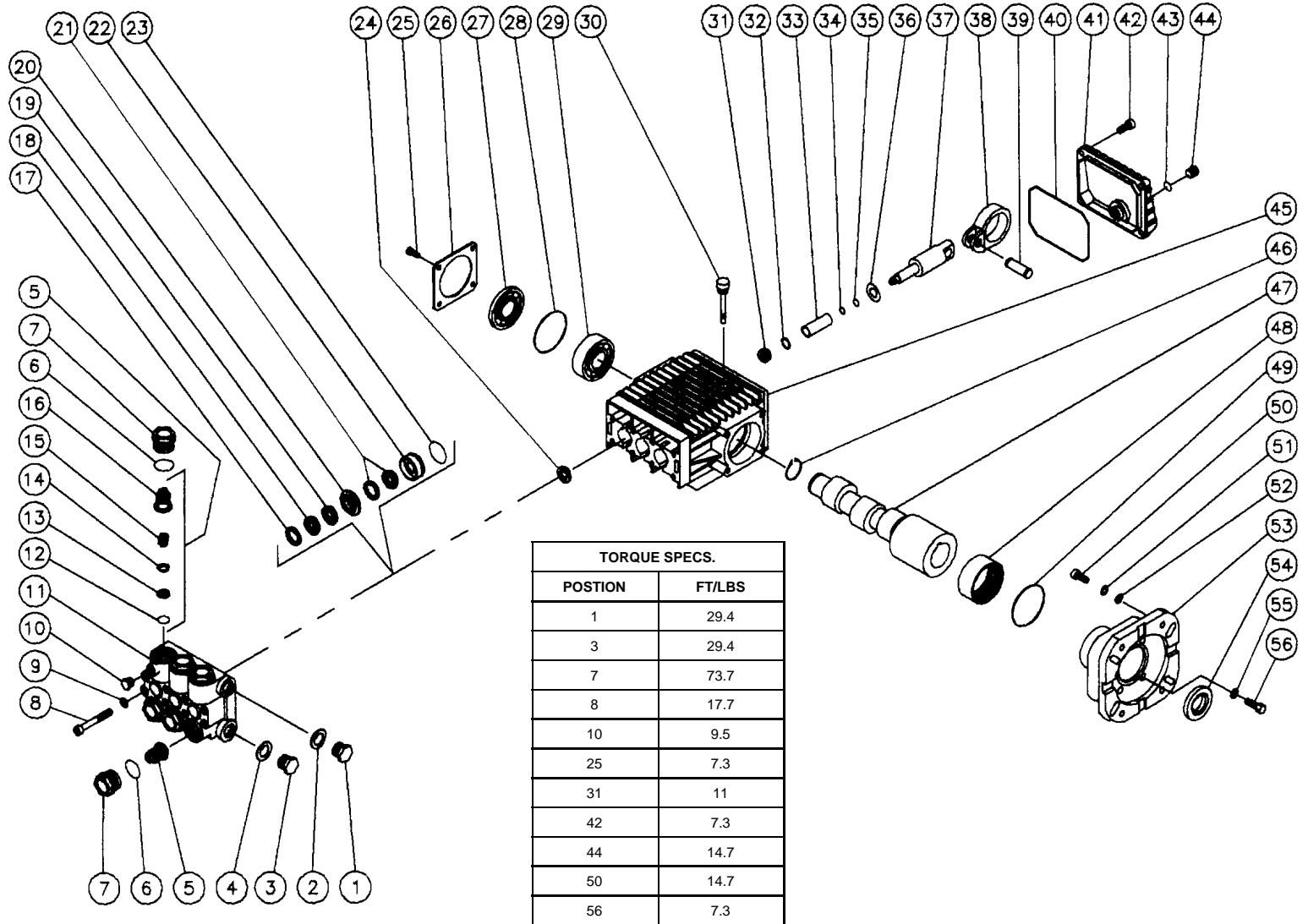


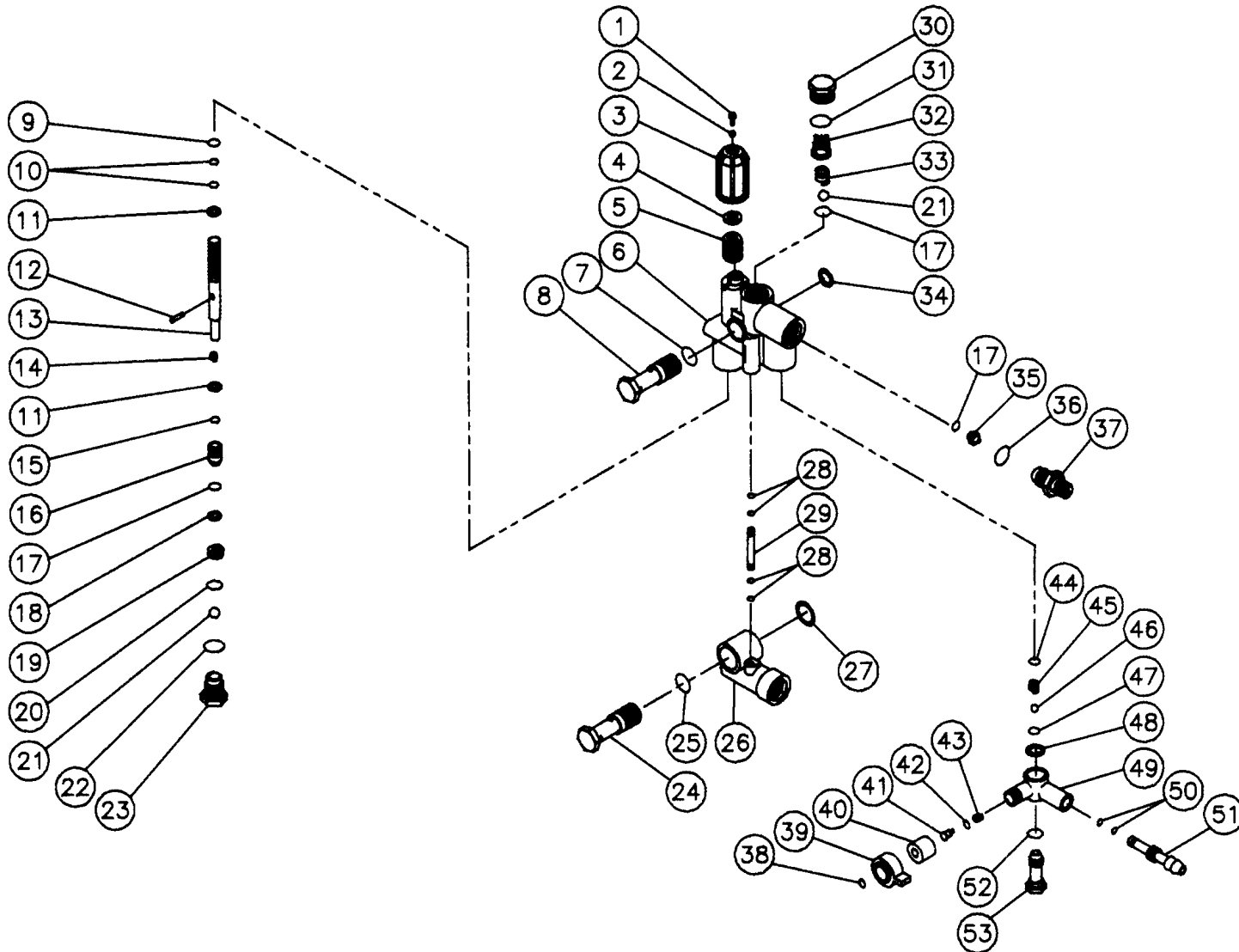
# PUMP ASSEMBLY (3-0120)



OMPMP017 -110195-BAR

PUMP ASSEMBLY (3-0120)								
REF #	DESCRIPTION	PART #	QTY		REF #	DESCRIPTION	PART #	QTY
1	Plug	39-0018	1		31	Nut	46-0168	3
2	Washer	28-0600	1		32	Washer	46-0166	3
3	Plug	39-0019	1		33	Plunger	46-0228	3
4	Washer	28-0601	1		34	O-ring	25-0045	3
5	Valve Assembly (See 70-0028)	N/A Sep.	6		35	Back-up Ring	25-0143	3
6	O-ring	25-0012	6		36	Flinger Washer	28-1018	3
7	Valve Plug	39-0071	6		37	Piston Guide	46-0573	3
8	Bolt	27-8439	8		38	Connecting Rod	46-0572	3
9	Lockwasher	29-0154	8		39	Connecting Rod Pin	43-0079	3
10	Plug	39-0032	1		40	O-ring	25-0317	1
11	Pump Manifold	46-0566	1		41	Crankcase cover	46-0571	1
12	O-ring (See 70-0028)	N/A Sep.	6		42	Bolt	27-8401	5
13	Valve Seat (See 70-0028)	N/A Sep.	6		43	O-ring	25-0014	1
14	Valve Plate (See 70-0028)	N/A Sep.	6		44	Plug	39-0017	1
15	Valve Spring (See 70-0028)	N/A Sep.	6		45	Crankcase	46-0570	1
16	Valve Cage (See 70-0028)	N/A Sep.	6		46	Snap Ring	46-0104	1
17	Head Ring (See 852-0047)	N/A Sep.	6		47	Crankshaft	46-0569	1
18	V-Packing (See 852-0047)	N/A Sep.	6		48	Needle Bearing	48-0040	1
19	Re-stop V-Packing (See 852-0047)	N/A Sep.	3		49	O-ring	25-0316	1
20	High Pressure Intermediate Seal	46-0223	3		50	Bolt	27-0118	4
21	Low Pressure Seal	N/A	3		51	Lockwasher	29-0008	4
22	Low Pressure Seal Retainer	46-0567	3		52	Washer	28-0023	4
23	O-ring	25-0048	3		53	Flange	38-0038	1
24	Oil Seal (See 70-0125)	26-0046	3		54	Oil Seal	26-0181	1
25	Bolt	27-8000	4		55	Lockwasher	29-0153	4
26	Retainer	46-0084	1		56	Bolt	27-8404	4
27	Oil Level Indicator	46-0574	1			Valve Kit (Inc. 6 each 12-16)	70-0028	
28	O-ring	25-0060	1			V-Packing Kit (Inc. 3 each 17-19, 21, 23)	852-0047	
29	Ball Bearing	48-0050	1			Retainer Kit (Inc. 3 each 22 & 23)	70-0125	
30	Oil Dipstick	46-0143	1					

# UNLOADER ASSEMBLY (8-0216)



UNLOADER ASSEMBLY (8-0216)								
REF. #	DESCRIPTION	PART #	QTY.		REF. #	DESCRIPTION	PART #	QTY.
1	Screw	27-8409	1		29	By-pass Tube	8-0223	1
2	Nut	30-3024	1		30	Cap	39-0040	1
3	Pressure Regulating Knob	7-0050	1		31	O-ring	25-0136	1
4	Spring Guide	8-0332	1		32	Valve Guide	8-0225	1
5	Spring	49-0047	1		33	Spring	49-0046	1
6	Valve Body-Brass	8-0218	1		34	Washer	28-0600	1
7	O-ring	25-0231	1		35	Orifice	8-0126	1
8	Fixing Screw-Brass	8-0224	1		36	O-ring	25-0051	1
9	Anti-Extrusion Ring	25-0137	1		37	Nipple	8-0130	1
10	O-ring	25-0138	2		38	Snap Ring	8-0229	1
11	Washer	28-0209	2		39	Injector Regulating Knob	7-0051	1
12	Pin	43-0051	1		40	Knob Insert	8-0228	1
13	Piston Guide	8-0219	1		41	Shutter	8-0227	1
14	Spring	49-0049	1		42	O-ring	25-0046	1
15	O-ring	25-0163	1		43	Spring	49-0019	1
16	Drive Piston	8-0220	1		44	O-ring	25-0120	1
17	O-ring	25-0050	3		45	Spring	49-0020	1
18	Back-up Ring	8-0284	1		46	Ball	50-0012	1
19	Valve Seat	8-0221	1		47	O-ring	25-0045	1
20	O-ring	25-0159	1		48	Washer	28-0400	1
21	Ball	8-0201	1		49	Injector Body	8-0226	1
22	O-ring	25-0160	1		50	O-ring	25-0132	2
23	Cap	39-0039	1		51	Hose Barb	8-0177	1
24	Fixing Screw	8-0222	1		52	O-ring	25-0014	1
25	O-ring	25-0053	1		53	Valve Seat	8-0174	1
26	Inlet Body	46-0242	1			Unloader Repair Kit (Includes: 5,7,9,10,14,15,17-22,25,28,31-33)	70-0020	1
27	Washer	28-0601	4			Detergent Repair Kit (Includes: 17, 35,42-47,50,52)	70-0021	1
28	O-ring	25-0161	1					