



IPC Integrated Professional Cleaning

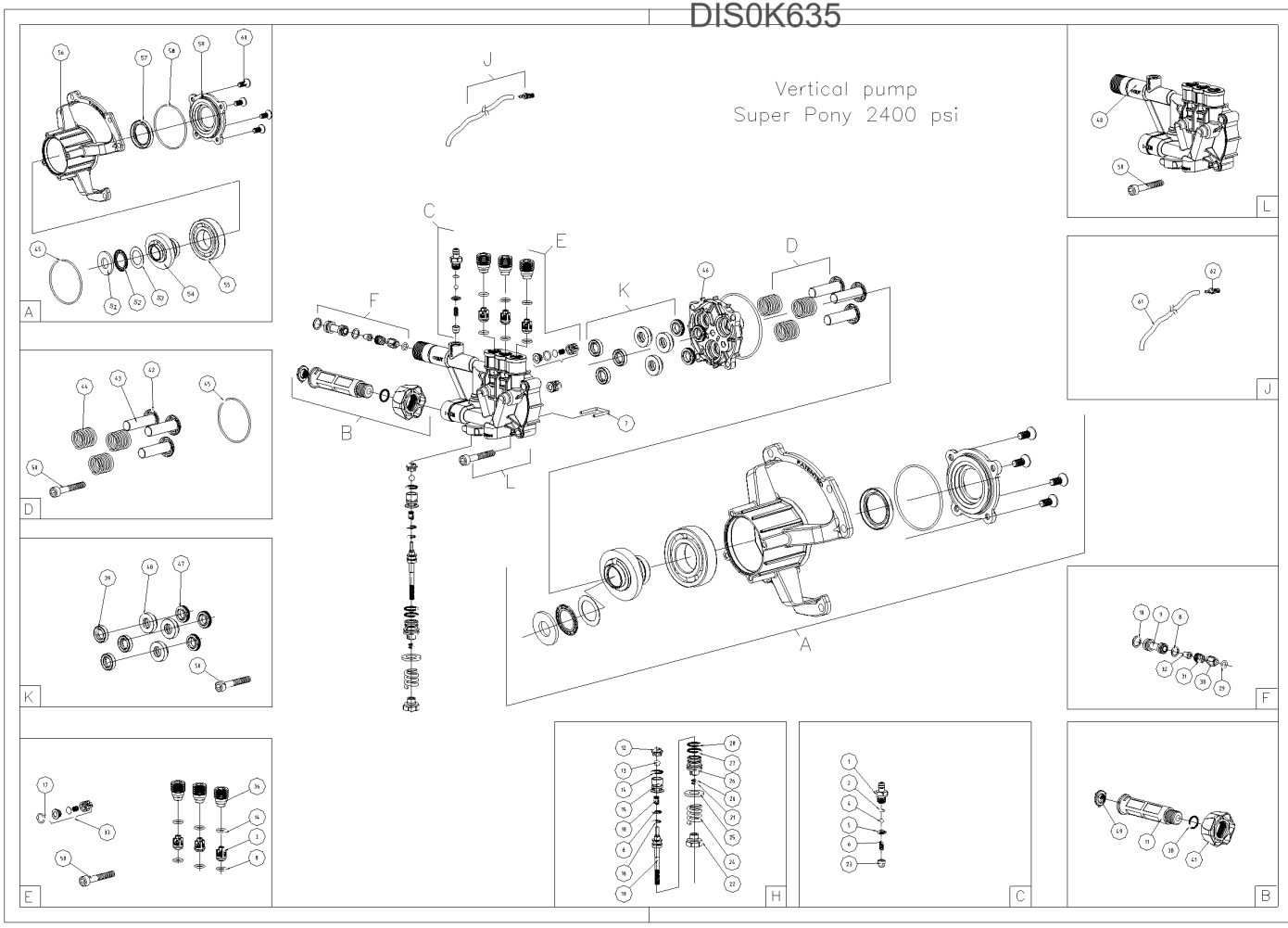
IPCFaip

Spare Parts List

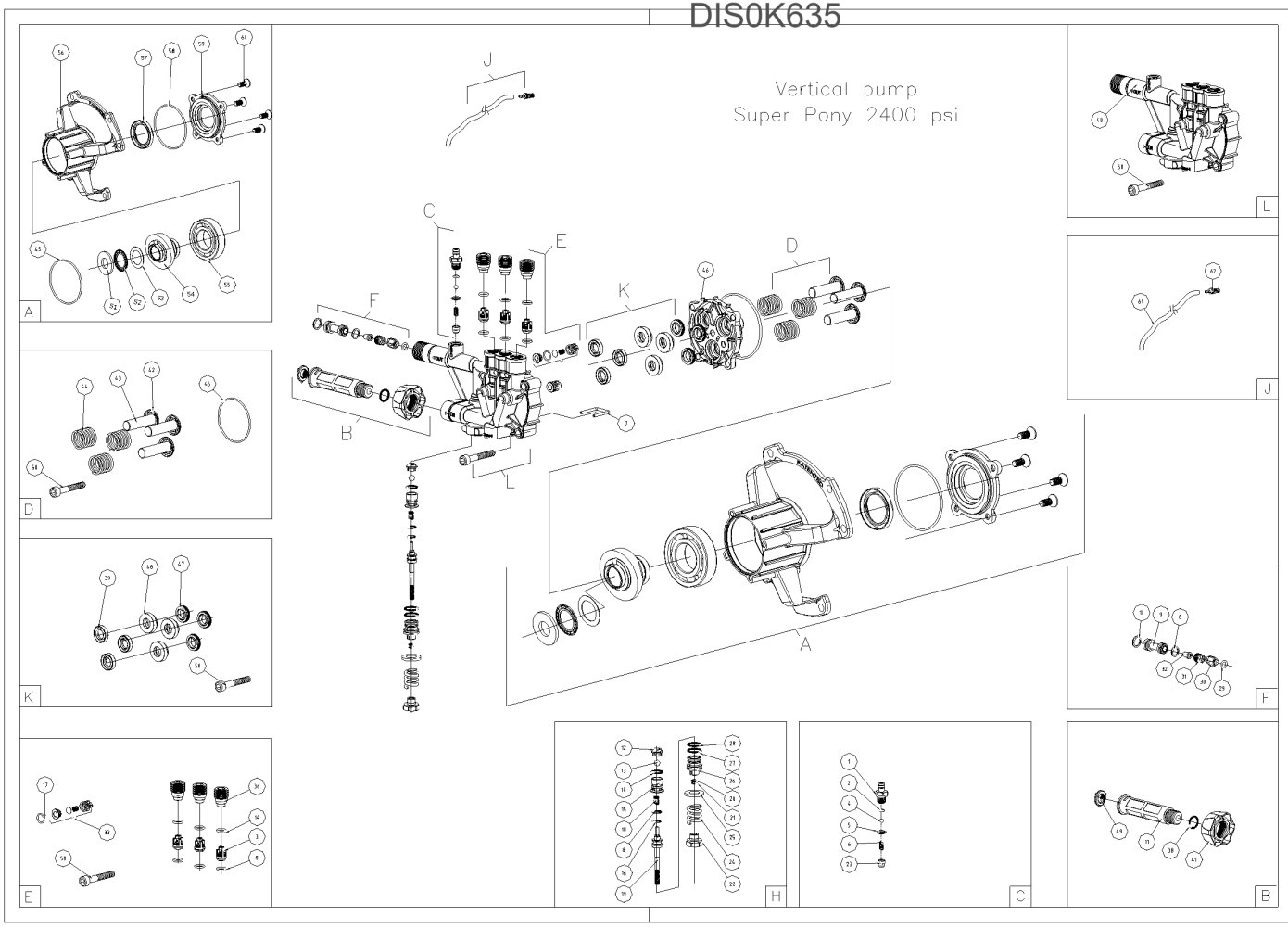
FAIP NORTH AMERICA, INC.

Ref: MTPV93564

Model: MTPV 2400/2 ITG S.PONY 10°30'C62 PR FNA



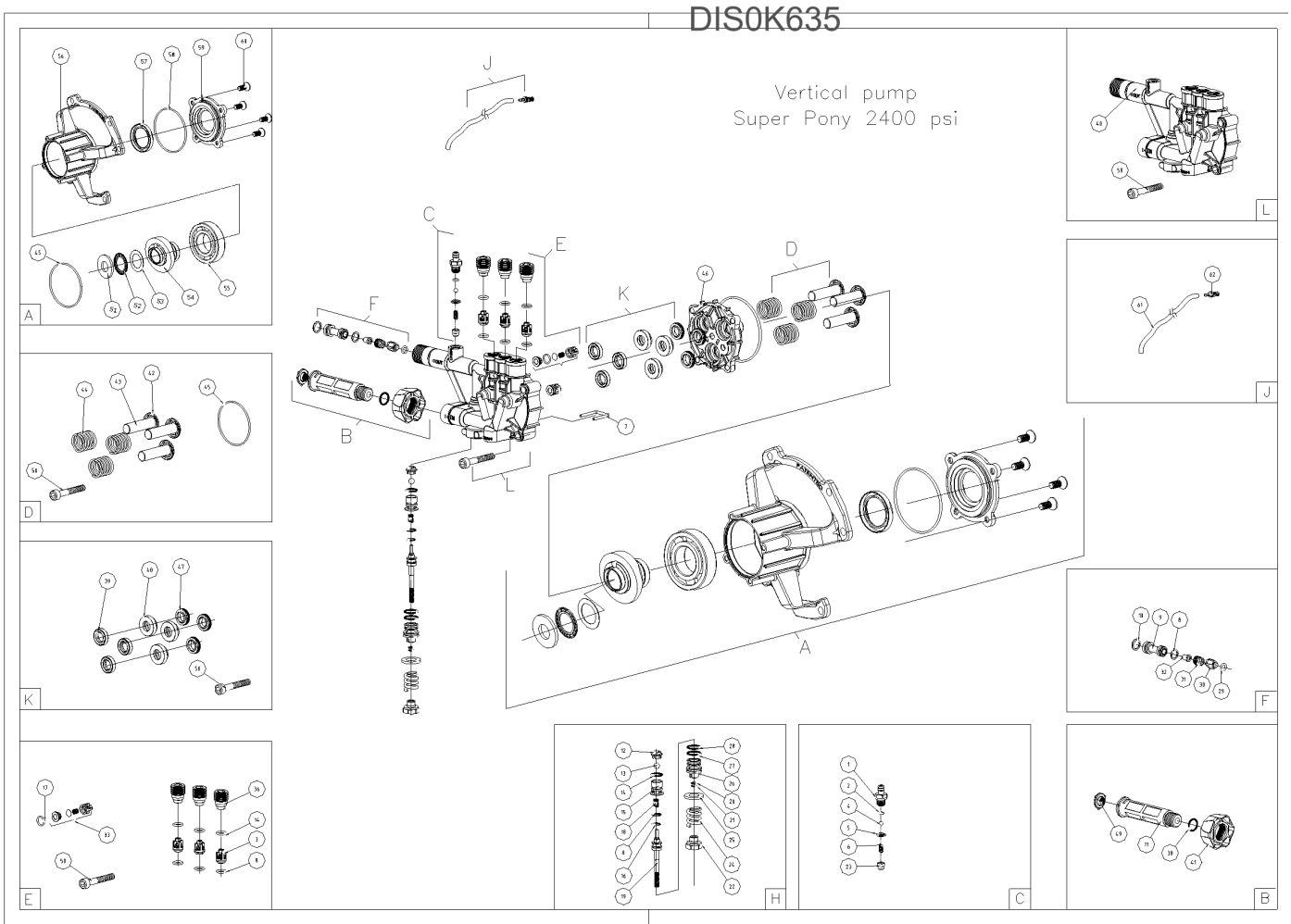
Ref.	K	Part N.	Customer Part N.	Description	Qty	Validity: From To	Price
0001	E			CONNECTOR OT ASP.DETERG.- H110	1,00		--
0002	E			O-RING D. 3.69 X 1.78 NBR 70SH	1,00		--
0003	E			SMALL VALVE A/M H100	3,00		--
0004	E			BALL D. 3/16" AISI 420	1,00		--
0005	E			O-RING D. 7.66 X 1.78 NBR 70SH	1,00		--
0006	E			SPRING CONICA D.3.5 H=11	1,00		--
0007		LAFN82147		PLUG ARR.CART BY-PASS BUR S2	1,00		--
0008	E			O-RING D. 8.73 X 1.78 NBR 70SH	3,00		--
0009	E			INJECTOR UNIT MTPV H100/12 S2	1,00		--
0010	E			O-RING D. 9 X 2 NBR 70SH	1,00		--
0011	E			EXTENSION ASP. G3/8 PL	1,00		--
0012	E			CAP B12	1,00		--
0013	E			BALL D. 7 AISI 420	1,00		--
0014	E			O-RING D. 9 X 2 NBR 70SH	4,00		--
0015	E			VALVE SEAT D. 5.6 B POL.	1,00		--
0016	E			ANTI-EXTR.RING D. 9 X12 X1.5 OR108	1,00		--
0017	E			O-RING D. 8 X 2 NBR 70SH	3,00		--
0018	E			SPRING D. 5.1 X19 X0.4 E/ST	1,00		--
0019	E			CONTROL PISTON BY-PASS H90 OT S.PONY	1,00		--
0020	E			O-RING D. 6.07 X 1.78 NBR 70SH	1,00		--
0021	E			ANTI-EXTR.RING D. 6 X 9	1,00		--
0022	E			NUT E.START ALL.	1,00		--
0023	E			CLAMP INIETT. MTPV H100	1,00		--
0024	E			SPRING D. 17,5 X 25 X 3,5 145 BA	1,00		--
0025	E			SPACER D.12 BY-PASS	1,00		--
0026	E			VALVE BODY BY-PASS B ALL.	1,00		--
0027	E			O-RING D. 14 X 1.78 NBR 70SH	1,00		--
0028	E			O-RING D. 12.42 X 1.78 NBR 70SH	1,00		--
0029	E			O-RING D. 5 X 2 NBR 90SH	1,00		--
0030	E			VALVE H90 PLS	1,00		--
0031	E			SPRING D. 9.2 X10X0.8 AISI 302	1,00		--
0032	E			NOZZLE INIETT.D.2,00-HOBBY 90	1,00		--
0033	E			SMALL VALVE A/M H100 LC	3,00		--
0036	E			VALVE TAP MAND. MTPV S.PONY	3,00		--
0038	E			O-RING D. 11.91 X 2.62 NBR 70SH	1,00		--
0039	E			PACKING D. 12 X18 X4 90SH	3,00		--
0040	E			HEAD S.PONY/12 ITG M7 FIN. LVG	1,00		--
0041	E			RING NUT GHS PLAST. BLU	1,00		--
0042	E			RETAINER RING PIST. H100 D12 0,5 S4	3,00		--



DIS0K635

Vertical pump
Super Pony 2400 psi

Ref.	K	Part N.	Customer Part N.	Description	Qty	Validity:		Price
						From	To	
0043	E			PISTON D. 12 X 47 INOX	3,00			--
0044	E			SPRING PISTONE 4 SP "CLIC"	3,00			--
0045	E			O-RING D. 70.00 X 2.00 NBR 70SH	1,00			--
0046		MFVR93972		CRANKCASE S.PONY D.12 AL FIN.LVG	1,00			--
0047	E			OIL SEAL 12X 20X 5/7+ML M037 80sh	3,00			--
0048	E			BUSHING D.12 S.PONY	3,00			--
0049	E			WATER FILTER ASS. MTPV2000	1,00			--
0050	E			SCREW TCEI M 7X45 32000 N.ZN.G.	4,00			--
0051	E			ROLLER BEAR.DISD. 60X30H6	1,00			--
0052	E			ROLLER BEARING AXK 4060	1,00			--
0053	E			FLANGE D. 40X60-1 AS4060	1,00			--
0054	E			CAP MTPV H90 6207 F/CH 10°30'	1,00			--
0055	E			BEARING 6207 35X72X17 ZVL	1,00			--
0056	E			FLANGE MTPV2400 S.PONY C/6207	1,00			--
0057	E			PACKING 35X50X7	1,00			--
0058	E			O-RING D. 74.30 X 2.62 NBR 70SH	1,00			--
0059	E			CRANKCASE S.PONY D.12 AL FIN.LVG	1,00			--
0060	E			SCREW M 8X 20 TSPEI ZN	4,00			--
0061	E			L.P. HOSE D. 6- 9	1,50			--
0062	E			SUCTION FILTER DETERG.HOBBY 90	1,00			--



Ref.	Part N.	Cust. Part N.	Description	Reference	Price
K A	KTRI94246		CAP KIT F 15-107 MTPV2400	0045 0051 0052 0053 0054 0055 0056 0057 0058 0059 0060	--
K B	KTRI93868		EXTENSION KIT F 15-054 MTPV2000/2	0011 0038 0041 0049	--
K C	KTRI94226		DETERGENT SUCT.KIT F 15-100 MTP PONY LC	0001 0002 0004 0005 0006 0023	--
K D	KTRI94241		PISTON KIT F 15-108 D.12 S.PONY	0042 0043 0044 0045 0050	--
K E	KTRI94242		SMALL VALVE KIT F15-109 MTPV2400	0003 0008 0014 0017 0033 0036 0050	--
K F	KTRI93871		VALVE KIT F 15-057 MTPV2000/2	0008 0009 0010 0029 0030 0031 0032	--
K H	KTRI94243		VALVE BY-PASSKIT F15-101BY-PASS S.PONY	0008 0012 0013 0014 0015 0016 0018 0019 0020 0021 0022 0024 0025 0026 0027 0028	--
K J	KTRI91352		DETERGENT HOSE KIT F 15-013 GN-----	0061 0062	--
K K	KTRI94247		PACKING KIT F 15-112 MTP S.PONY	0039 0047 0048 0050	--
K L	KTRI94244		PUMP HEAD KIT F 15-111 MTP2400 ALL.	0040 0050	--