

# HIGH PRESSURE WASHER OPERATOR MANUAL

Overview	3
Important Safety Instructions	4-5
Assembly Instructions	6
Operating Instructions	7
GFCI instructions	8
Using the Accessories	8
Working with Detergents	9
Shut Down	10
Taking a Break	10
Winterizing and Long-Term Storage	11
Care and Maintenance Instructions	11
Cleaning Tips	11-12
Optional Cleaning Accessories	13-14
Troubleshooting	15-16

## Specifications

Operating pressure	1750 PSI
Water volume	1.5 GPM
Amp draw	14 AMPS
Voltage	120 V
Part No.	1.636-121.0
Serial no.	

## Kärcher Customer Support USA

Call: **1-800-537-4129** for help or visit our website: **[www.karcher-usa.com](http://www.karcher-usa.com)**

## Safety Alert Symbols

### **DANGER**

*indifies "an imminently hazardous situation which, if not avoided, will result in death or serious injury."*

### **WARNING**

*indifies "a potentially hazardous situation which, if not avoided, could result in death or injury."*

### **CAUTION**

*indifies "a potentially hazardous situation which, if not avoided, may result in minor or moderate injury" or in property damage incidents.*

## MODEL OVERVIEW

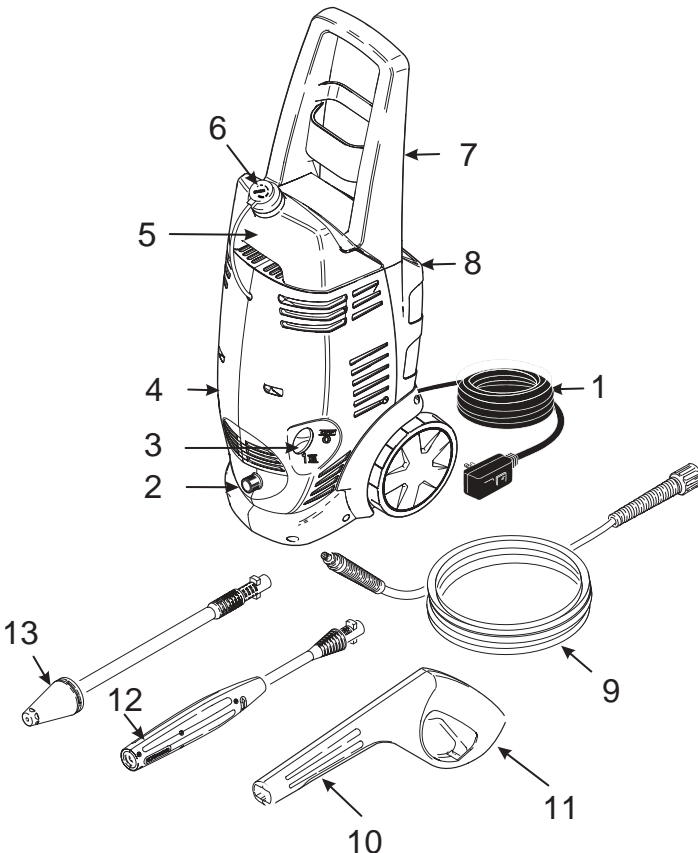
### Item Description:

- |  |                            |
|--|----------------------------|
| 1 Power cord with Ground Fault Circuit Interrupter (GFCI)    | 10 Trigger gun             |
| 2 High pressure outlet                                       | 11 Trigger gun safety lock |
| 3 On/OFF switch  | 12 Vario Spray wand        |
| 4 Water inlet with garden hose connector (not shown)         | 13 Rotating spray wand     |
| 5 Detergent tank (removeable)                                |                            |
| 6 Cap with detergent dosing valve and detergent suction tube |                            |
| 7 Transport handle   |                            |
| 8 Accessory compartment                                      |                            |
| 9 High pressure hose   |                            |

### **⚠ CAUTION**

*Follow the maintenance instructions specified in the manual*

*This machine has been designed for use with cleaning detergents by the manufacturer. The use of other cleaning detergents may affect the operation of the machine and void the warranty.*



***For household use only !***

# IMPORTANT SAFETY INSTRUCTIONS



## WARNING!

*When using this product basic precautions should always be followed, including the following:*

- Read all the instructions before using the product.
- *To reduce the risk of injury, close supervision is necessary when a product is used near children.*
- Know how to stop the product and bleed pressures quickly. Be thoroughly familiar with the controls.
- Stay alert — watch what you are doing.
- Do not operate the product when fatigued or under the influence of alcohol or drugs.
- Keep operating area clear of all persons.
- Do not overreach or stand on unstable support. Keep good footing and balance at all times.
- Follow the maintenance instructions specified in the manual.
- This Product Is Provided With A Ground Fault Circuit Interrupter (GFCI) Built Into The Power Cord Plug. If Replacement Of The Plug Or Cord Is Needed, Use Only Identical Replacement Parts.
- Risk of Injection or Injury to persons - Do not direct discharge stream at persons.
- High pressure jets can be dangerous if subject to misuse. The jet must not be directed at persons, animals, electrical devices, or the machine itself.
- Wear safety goggles.

- Do not use acids and solvents in this product. These products can cause physical injuries to the operator and irreversible damage to the machine.
- To reduce the risk of electrocution, keep all connections dry and off the ground.
- Do not touch plug with wet hands.
- The Trigger Gun Safety Lock PREVENTS the trigger from accidentally being engaged. This safety feature DOES NOT lock trigger in the ON position.

### Grounding Instructions

This product must be grounded. If it should malfunction or breakdown, grounding provides a path of least resistance for electric current to reduce the risk of electric shock. This product is equipped with a cord having an equipment-grounding conductor and a grounding plug. The plug must be plugged into an appropriate outlet that is properly installed and grounded in accordance with all local codes and ordinances.

#### **DANGER**

*Improper connection of the equipment-grounding conductor can result in a risk of electrocution. Check with a qualified electrician or service personnel if you are in doubt as to whether the outlet is properly grounded. Do not modify the plug provided with the product - if it will not fit the outlet, have a proper outlet installed by a qualified electrician. Do not use any type of adapter with this product.*

## Ground Fault Circuit Interrupter (GFCI) Protection

This product is supplied with a Ground Fault Circuit Interrupter (GFCI) built into the power cord plug. This device provides additional protection from the risk of electric shock. If power is interrupted in the line, the GFCI will automatically re-close the circuit to the load after power is restored. Depending on the GFCI model, it may be necessary to manually operate the reset button to restore power to the GFCI load circuit. If replacement of the plug or cord is needed use identical replacement parts.

## Extension Cords

- Use only 3-wire extension cords that have 3-prong grounding-type plugs and 3-pole cord connectors that accept the plug from the product.  
Up to 25 ft = 12/3 AWG;  
25 to 50 ft = 10/3 AWG.
- Use only extension cords that are intended for outdoor use. These extension cords are identified by the marking "Acceptable for use with outdoor appliances; store indoors while not in use."
- Use only extension cords having an electrical rating not less than the rating of the product.
- Do not use damaged extension cords.
- Examine extension cord before using and replace if damaged.
- Do not abuse extension cord and do not yank on any cord to disconnect.
- Keep cord away from heat and sharp edges.
- Always disconnect the extension cord from the receptacle before dis-

connecting the product from the extension cord.

- If you are using an extension cord, it should always be completely unwound from the cable drum.

### ⚠ **WARNING**

*To reduce the risk of electrocution, keep all connections dry and off the ground. Do not touch plug with wet hands.*

## WATER SUPPLY (Cold Water Only)

### ⚠ **CAUTION**

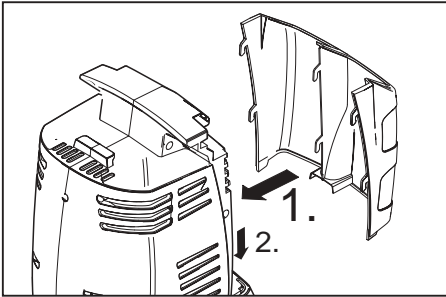
*Dirt in the feed water will damage the unit. To avoid this risk, we recommend fitting a water filter.*

- Water hose must be at least 5/8 inch in diameter.
- Flow rate of water supply must not fall below 2 GPM (gallons per minute).
- Flow rate can be determined by running the water for one minute into an empty 5-gallon container.
- The water supply temperature must not exceed 104°F/40°C.
- Never use the pressure washer to draw in water contaminated with solvents, e.g. paint thinners, gasoline, oil, etc.
- Always prevent debris from being drawn into the unit by using a clean water source.

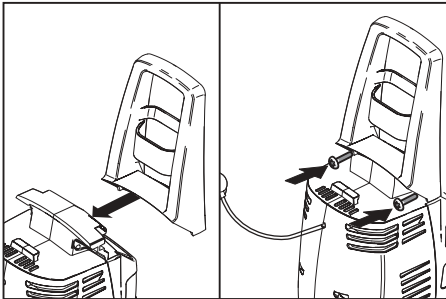
**SAVE THESE  
INSTRUCTIONS !**

## ASSEMBLY INSTRUCTIONS

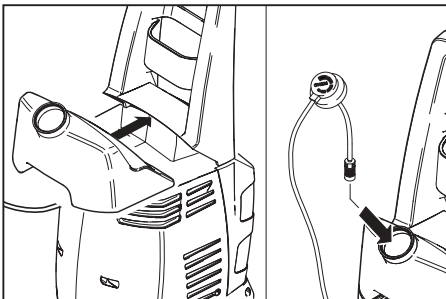
→ **STEP 1:** Mount cover to backside



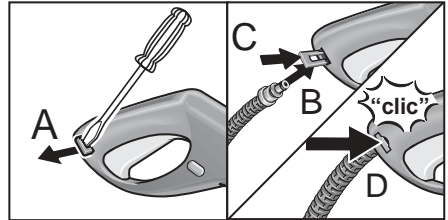
→ **STEP 2:** Attach the handle and secure with 2 screws.



→ **STEP 3:** Place detergent tank into compartment and attach cap with detergent dosing valve and detergent suction tube.

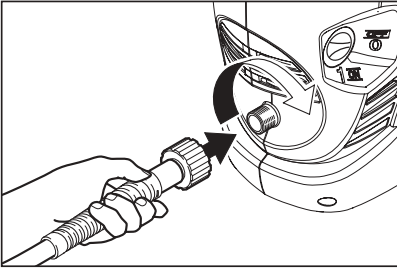


→ **STEP 4:** Attach the high pressure hose to the trigger gun. Pull out the locking slide from the right side of the trigger gun handle (A), and insert the small end of the high pressure hose into place (B). Push the locking slide back into the trigger gun (C) to lock the hose in position (D).

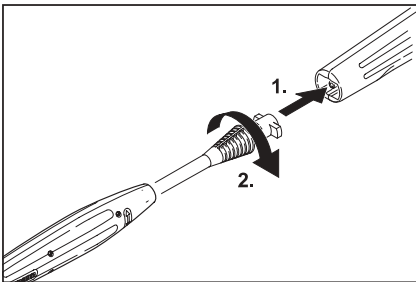


## OPERATING INSTRUCTIONS

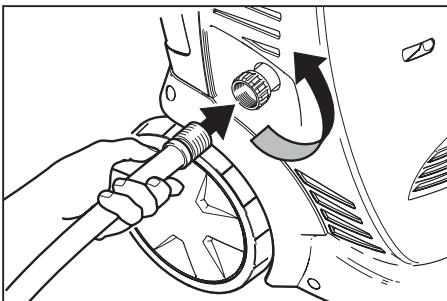
- **STEP 1:** Connect the high pressure hose to the unit's high pressure outlet.



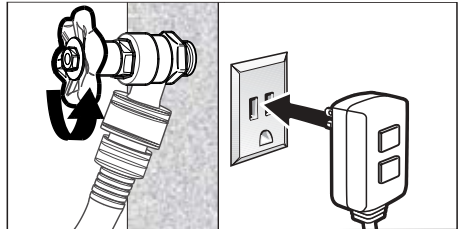
- **STEP 2:** Insert the spray wand of your choice to the trigger gun. Press in against the spring tension and twist into locked position.



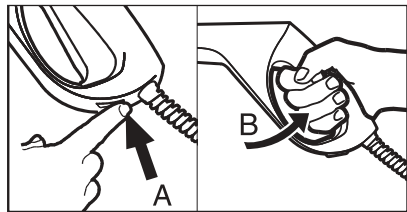
- **STEP 3:** Connect garden hose to unit's water inlet.



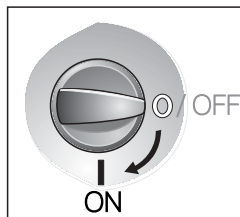
- **STEP 4:** Connect garden hose to the cold water source and turn water on completely. Plug the power cord into the power outlet.



- **STEP 5:** Unlock the Safety lock (A). Trigger the gun (B) to eliminate trapped air, wait for a steady flow of water to emerge from the spray nozzle.



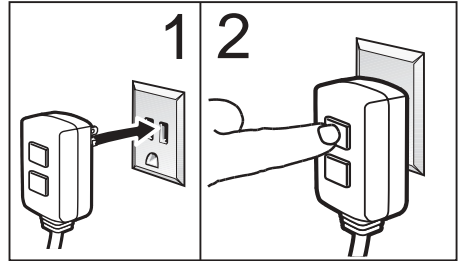
- **STEP 6:** Turn on the high pressure washer (I).  
**The motor starts only if the trigger of the gun is pulled and shuts off when the trigger is released.**



## GFCI INSTRUCTIONS

- **STEP 1:** Plug the Ground Fault Circuit Interrupter (GFCI) into a working outlet.
- **STEP 2:** Press "TEST", then press "RESET" to assure proper connection to power.

Note: The actual appearance of the GFCI may be different from this illustration.



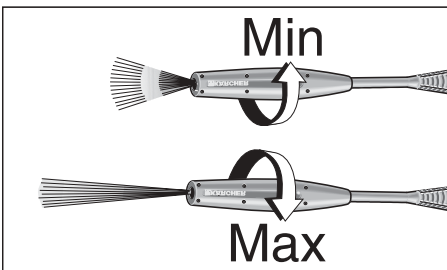
## USING THE ACCESSORIES

### **⚠ WARNING**

*To avoid serious injury never point spray nozzle at yourself, other persons or animals.*

### **Vario power nozzle**

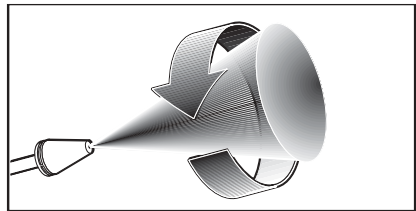
- The Vario power spray wand allows you to adjust the cleaning pressure. To clean at maximum pressure, the wand must be positioned to the high pressure setting (Max). For lower pressure turn the wand collar in the minus (Min) direction. To apply detergent, the wand must be positioned to the low pressure setting (Min).



### **Dirtblaster nozzle**

- This nozzle features a 0° pencil jet which rotates 360° for maximum dirt cutting action, effectively increasing cleaning performance up to 50%. This nozzle combines the cleaning performance of a 0° pencil jet with the surface coverage of a wide angle nozzle.

**Not recommended for soft materials, siding, painted surfaces, decks or autos.**

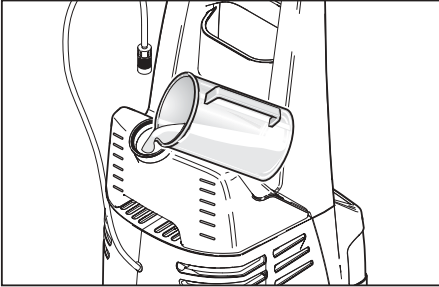




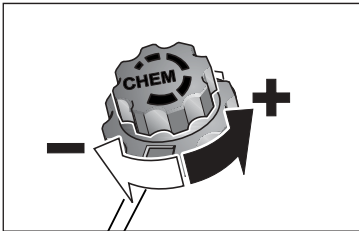
## WORKING WITH DETERGENTS

Detergents can only be applied at low pressure (Min).

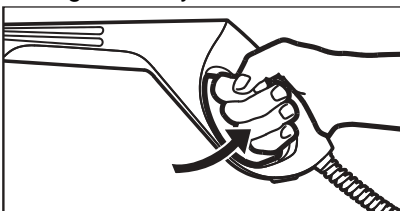
- **STEP 1:** Install the vario power nozzle. Set the spray wand to the low pressure setting (Min).
- **STEP 2:** Fill the Detergent Tank with the selected Ready To Use detergent.



- **STEP 3:** Adjust the detergent dosing valve to the desired dosage.



- **STEP 4:** Turn on the pressure washer (1). Pull trigger to operate unit: Liquid detergent is drawn into the unit and mixed with water. Apply detergent to work area. Do not allow detergent to dry on surface.



For best results see Cleaning Tips on pages 11 & 12 for specific information on how to clean different surfaces.

### *Always Use Kärcher Detergent for Best Results*

Kärcher biodegradable detergents are specially formulated to protect the environment and your pressure washer. Special formula won't clog the suction tube filter and will protect the internal parts of the pressure washer for a longer life. For Kärcher Detergents, check your retailer or call our service center for help.

*The following Kärcher detergents are available:*

### **One Gallon ready to use**

- Vehicle Wash
- All Purpose Cleaner
- Deck Wash
- Degreaser
- House Wash

### **⚠ CAUTION**

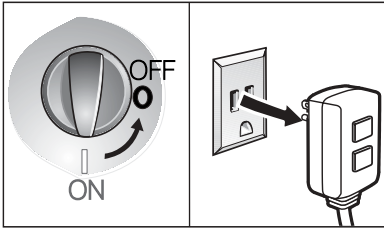
#### **Never use:**

- Bleach, Chlorine products and other corrosive chemicals
- Liquids containing solvents (i.e., paint thinners, gasoline, oils)
- Tri-sodium phosphate products
- Ammonia products
- Acid-based products

These chemicals will harm the unit and will damage the surface being cleaned.

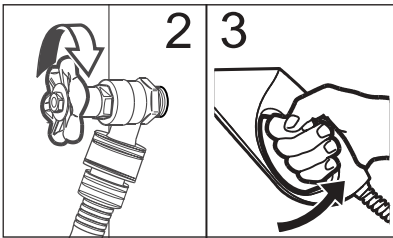
## SHUTTING DOWN

**STEP 1:** Turn the switch to OFF (O) position and unplug cord from outlet.

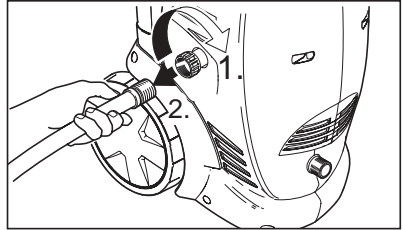


**STEP 2:** Turn off the water source.

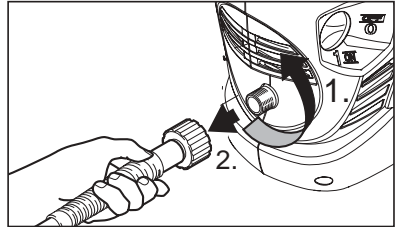
**STEP 3:** Press trigger to release water pressure.



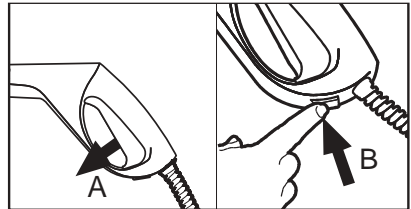
**STEP 4:** Disconnect the garden hose from the water inlet on the unit..



**STEP 5:** Disconnect the high pressure hose from the high pressure outlet.



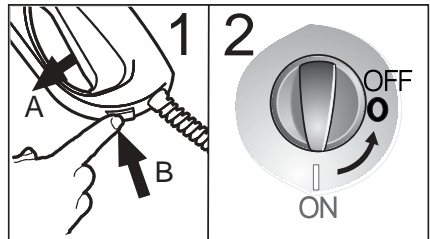
**STEP 6:** Release trigger (A) and engage gun safety lock (B).



## TAKING A BREAK ..five minutes or more

**STEP 1:** Release trigger (A) and engage gun safety lock (B).

**STEP 2:** Turn pressure washer to off (O) position.



## WINTERIZING AND LONG-TERM STORAGE

- 1: Disconnect all water connections.
- 2: Turn on the machine for a few seconds, until the water which had remained in the pump exits, turn off immediately.
- 3: Do not allow high pressure hose to become kinked.
- 4: Store the machine and accessories in a room which does not reach

freezing temperatures. DO NOT store near furnace or other sources of heat as it may dry out the pump seals.

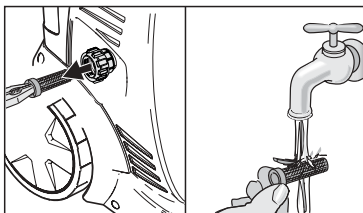
### ⚠ CAUTION

*Failure to follow the above directions will result in damage to the pump assembly and accessories.*

## CARE AND MAINTENANCE INSTRUCTIONS

### Cleaning the water inlet filter

Pull out the water inlet filter with flat-nose pliers and rinse out in warm water.



### Maintenance

The unit is maintenance-free.

## CLEANING TIPS

### Deck Cleaning

**(with or without detergent).** Pre-rinse deck and surrounding area with fresh water. If using Kärcher Deck Wash, apply to surface at low pressure. For best results, limit your work area to smaller sections of approximately 25 square feet. Allow Deck Wash to remain on surface 1-3 minutes. Do not allow detergent to dry on surface. Rinse at high pressure in a long sweeping motion keeping the spray nozzle approximately 3-6 inches from the cleaning surface. Always clean from top to bottom and from left to right. When moving on to a new section of the cleaning surface, be sure to overlap the previous section to

eliminate stop marks and ensure a more even cleaning result.

### House Siding

**(with or without detergent).** Pre-rinse cleaning surface with fresh water. If using Kärcher Pressure Wash, apply to surface at low pressure (for best results, limit your work area to sections of approximately 6 feet and always apply detergent from bottom to top). Allow Pressure Wash to remain on surface 1-3 minutes. Do not allow detergent to dry on surface, if surface appears to be drying, simply wet down surface with fresh water. If needed, use special wash brush attachment (not included) to remove stubborn dirt. Rinse at high pressure from top to bottom in an even

sweeping motion keeping the spray nozzle approximately 6 inches from the cleaning surface.

### **Cement Patios, Brick and Stone**

**(with or without detergent).** Pre-rinse cleaning surface with fresh water. If using Kärcher Pressure Wash or Degreaser, apply to surface at low pressure. For best results, limit your work area to smaller sections of approximately 25 square feet. Allow Pressure Wash or Degreaser to remain on surface 1-3 minutes. Do not allow detergent to dry on surface. Rinse at high pressure in a sweeping motion keeping the spray nozzle approximately 3-6 inches from the cleaning surface. Always clean from top to bottom and from left to right. For removing extremely stubborn stains, use the Dirtblaster Nozzle.

### **Cars, Boats & Motorcycles**

**(with or without detergent).** Pre-rinse vehicle with fresh water. If using Kärcher Touchless Vehicle Wash, apply to surface at low pressure. For best results, clean one side of vehicle at a time and always apply detergent from bottom to top, do not allow detergent to dry on surface. If needed, use special wash brush attachment (not included) to remove stubborn dirt. Rinse at high pressure in a sweeping motion keeping the spray nozzle approximately 6-8 inches from the cleaning surface (distance should increase when rinsing pin-stripping or other sensitive surfaces). Always clean from top to bottom and from left to right. For best results, wipe surface dry with a chamois or soft dry cloth.

### **Barbecue Grills, Outdoor Power Equipment & Gardening Tools**

**(with or without detergent).** Pre-rinse cleaning surface with fresh water. If using Kärcher Pressure Wash or Degreaser, apply detergent at low pressure. Allow Pressure Wash to remain on surface 1-3 minutes. Do not allow detergent to dry on surface. Rinse at high pressure keeping the spray nozzle approximately 3-6 inches from the cleaning surface. For removing extremely stubborn dirt, it may be necessary to move the spray nozzle even closer to the surface for greater dirt cutting action.

### **Patio & Lawn Furniture**

**(with or without detergent).** Pre-rinse furniture and surrounding area with fresh water. If using Pressure Wash, apply to surface at low pressure. Allow Pressure Wash to remain on surface 1-3 minutes. Do not allow detergent to dry on surface. If needed use special Wash Brush Attachment (not included) to remove stubborn dirt. Rinse at high pressure in a sweeping motion keeping the spray nozzle approximately 3-6 inches from the cleaning surface. For best results, clean from top to bottom and from left to right.

### **Recommendations**

- Before cleaning any surface an inconspicuous area should be cleaned to test spray pattern and distance for maximum cleaning results.
- If painted surfaces are peeling or chipping, use extreme caution as pressure washer may remove the loose paint from the surface.
- When using on surfaces which might come in contact with food, flush surfaces with plenty of drinking water.

## OPTIONAL CLEANING ACCESSORIES

*Optional cleaning accessories are available to further enhance your cleaning capabilities: See accessories order form for product descriptions and ordering instructions.*

### Pump Guard

Specially formulated to protect your pressure washer from freezing, corrosion and premature wear. The Pump Guard also adds lubrication to valves and seals to prevent sticking. Highly recommended for all Karcher pressure washers!

**Part No. 9.556-999.0**

### Water Pumping Kit

Attach this accessory to your pressure washer to quickly pump large quantities of water out of a standing source, such as a barrel or bucket. Fits most Karcher pressure washers up to 2300 PSI. (bayonet)

**Part No. 2.637-214.0**

### 33 Ft. Extension High-Pressure Hose

Tired of moving around your pressure washer when you clean? Extend your working range by 33 feet with this extension hose. Fits most Karcher pressure washers up to 2300 PSI. (bayonet)

**Part No. 6.389-092.0**

### Underbody/Gutter Spray Wand

An angled spray lance that is ideal for cleaning tirewalls, roof gutters and other hard-to-reach areas. 30" long assembled. An indispensable tool to add to your cleaning arsenal. Easily attaches to most Karcher pressure washers up to 2300 PSI. (bayonet)

**Part No. 2.640-741.0**

### Flexible Spray Wand

Having trouble reaching areas at odd angles? The Karcher Flexible Spray Wand swivels 360° to easily clean difficult-to-reach areas. Features high and low-pressure jet settings, adjustable right at the nozzle. Fits most Karcher pressure washers up to 2300 PSI. (bayonet)

**Part No. 4.760-265.0**

### 66" Extension Wand (Four piece)

Need to clean second story windows or other high areas? Increase the reach of your pressure washer by up to 66" with this extension kit. Includes 4 aluminum sections for variable length. 66" fully assembled. Fits most Karcher pressure washers up to 2300 PSI. (bayonet)

**Part No. 2.640-746.0**

### Rotating Wash Brush (bayonet)

For more effortless cleaning of all smooth surfaces (painted, glass and plastic) try Karcher's Rotating Wash Brush. Use it on your automobile, house siding or windows. The water pressure from your pressure washer causes the inner brushes to gently spin, making your cleaning job much easier. The angle of brush head is adjustable to help you reach difficult areas. Excellent for the application of detergent. A must-have accessory designed for Karcher pressure washers up to 2300 PSI. (bayonet)

**Part No. 2.640-743.0**

### Soft Clean Washing Brush

Made with soft bristles that will not harm painted surfaces. Easily attaches directly to the trigger gun. Ideal for stubborn

dirt on cars, boats, patio furniture and other surfaces. Great for applying detergent. Fits most Kärcher pressure washers up to 2300 PSI. (bayonet)

**Part No. 2.640-740.0**

### **25 ft. Pipe Cleaning Kit (bayonet)**

Need to clean blocked pipes, drains or downspouts? Kärcher's pipe cleaning kit is the answer! The pipe cleaner propels itself forward while simultaneously flushing out debris. For example, insert the cleaning nozzle in the base of a downspout, pull the trigger on the pressure washer gun and watch as the nozzle shoots out leaves and other debris while climbing upward. Connects directly to the trigger gun of most Kärcher pressure washers up to 2300 PSI. (bayonet)

**Part No. 2.640-747.0**

### **Wet Sandblasting Kit (bayonet)**

Why spend hours stripping old paint and rust by hand using harsh chemicals? Let Kärcher's Wet Sandblasting Kit do the work! Attach the kit to your pressure washer, add abrasive material and attack the rust and paint with our eco-friendly alternative. Fits most Kärcher pressure washers up to 2300 PSI. (bayonet)

**Part No. 2.638-792.0**

### **Detergent Foamer Attachment**

Ideal for applications which require a thick foam. Simply fill the reservoir cup with liquid pressure washer detergent to generate a foam spray. Connects directly to the trigger gun. Fits most Kärcher pressure washers up to 2300 PSI. (bayonet)

**Part No. 6.964-507.0**

### **T-Racer Wide Area Surface Cleaner**

For cleaning surfaces such as patios, terraces and driveways without splash-back, there is no better solution than Kärcher's T-Racer. It saves time by cleaning a 12" wide area gently as it hovers, providing consistent, streak-free cleaning. When you finish cleaning the patio and driveway, remove the wand and use the handle to clean garage doors and other vertical surfaces. Includes two height-adjustable nozzles which spin at high speed for optimum results. Our top selling accessory for Kärcher pressure washers up to 2300 PSI. (bayonet)

**Part No. 2.640-508.0**

### **Kärcher Customer Support USA**

Call: **1-800-537-4129** for help or visit our website: **[www.karcher-usa.com](http://www.karcher-usa.com)**

## TROUBLESHOOTING

**⚠ CAUTION**

*Disconnect the machine from the power source before making any repair.*

Symptom	Cause	Solution
Motor will not start	On/Off switch is in the "OFF" (O) position.	Turn switch to the "ON" (I) position
	Power cord is not plugged in.	Plug in power cord.
	Extension cord is too long.	Replace extension cord with either a 25 ft. 12/3 gauge cord or a 50 ft. 10/3 gauge cord.
	Extension cord is not proper gauge.	
	Extension cord is damaged.	
	Electrical outlet does not supply adequate power.	Try a different outlet.
	Tripped circuit breaker.	Switch off pressure washer. The reset will be automatically, for that wait that the temperature goes down.
Unit does not reach high pressure.	Diameter of garden hose is too small.	Replace with a 5/8 inch garden hose.
	Water supply is restricted.	Check garden hose for kinks, leaks and blockage.
	Not enough inlet water supply.	Open water source full force.
	Water inlet filter is clogged.	Remove filter and rinse out in warm water.
	Spray wand is in low pressure position.	Turn spray wand to high pressure position.
Output pressure varies high and low.	Not enough inlet water supply.	Turn water on full force. Check garden hose for kinks, leaks or blockage.
	Pump is sucking air.	Check that hoses and fittings are air tight. Turn off machine and purge pump by squeezing trigger gun until a steady flow of water emerges through the nozzle.
	Water inlet filter is clogged.	Remove filter and rinse out in warm water.
	Discharge nozzle is obstructed.	Blow out or remove debris with a fine needle.
	Calcified gun, hose or spray wand.	Run distilled vinegar through detergent suction tube.

Symptom	Cause	Solution
No detergent.	Detergent suction tube not properly connected to the machine.	Check connection.
	Detergent is too thick.	Dilute detergent, for best results use Kärcher detergent.
	Filter on detergent suction tube is clogged.	Run warm water through filter to remove debris.
	Damaged or clogged detergent suction tube.	Remove obstruction or replace detergent suction tube.
	Spray wand is in high pressure position.	Turn spray wand tip to low pressure position.
	Discharge nozzle is obstructed.	Blow out or remove debris with fine needle.
Garden hose connection leaks.	Loose fittings.	Tighten fittings.
	Missing/worn rubber washer.	Insert new washer.
Spray wand leaks.	Spray wand not properly attached.	Insert the spray wand into the trigger gun. Carefully press in against the spring tension and twist into the locked position.
	Broken o-ring or plastic insert.	Call service center.
Pump is noisy.	Pump is sucking air.	Check that hoses and fittings are air tight. Turn off machine and purge pump by squeezing trigger gun until a steady flow of water emerges through the nozzle.
Water leaks from pump (up to 10 drops per minute is permissible).	Loose fittings.	Check that all fittings are tight.
	Water seals are damaged or worn.	Call service center.
Oil Drip.	Oil seals are damaged or worn.	Call service center.

### Kärcher Customer Support USA

Call: **1-800-537-4129** for help or visit our website: **[www.karcher-usa.com](http://www.karcher-usa.com)**

If you encounter any additional difficulties not listed, please call for help.