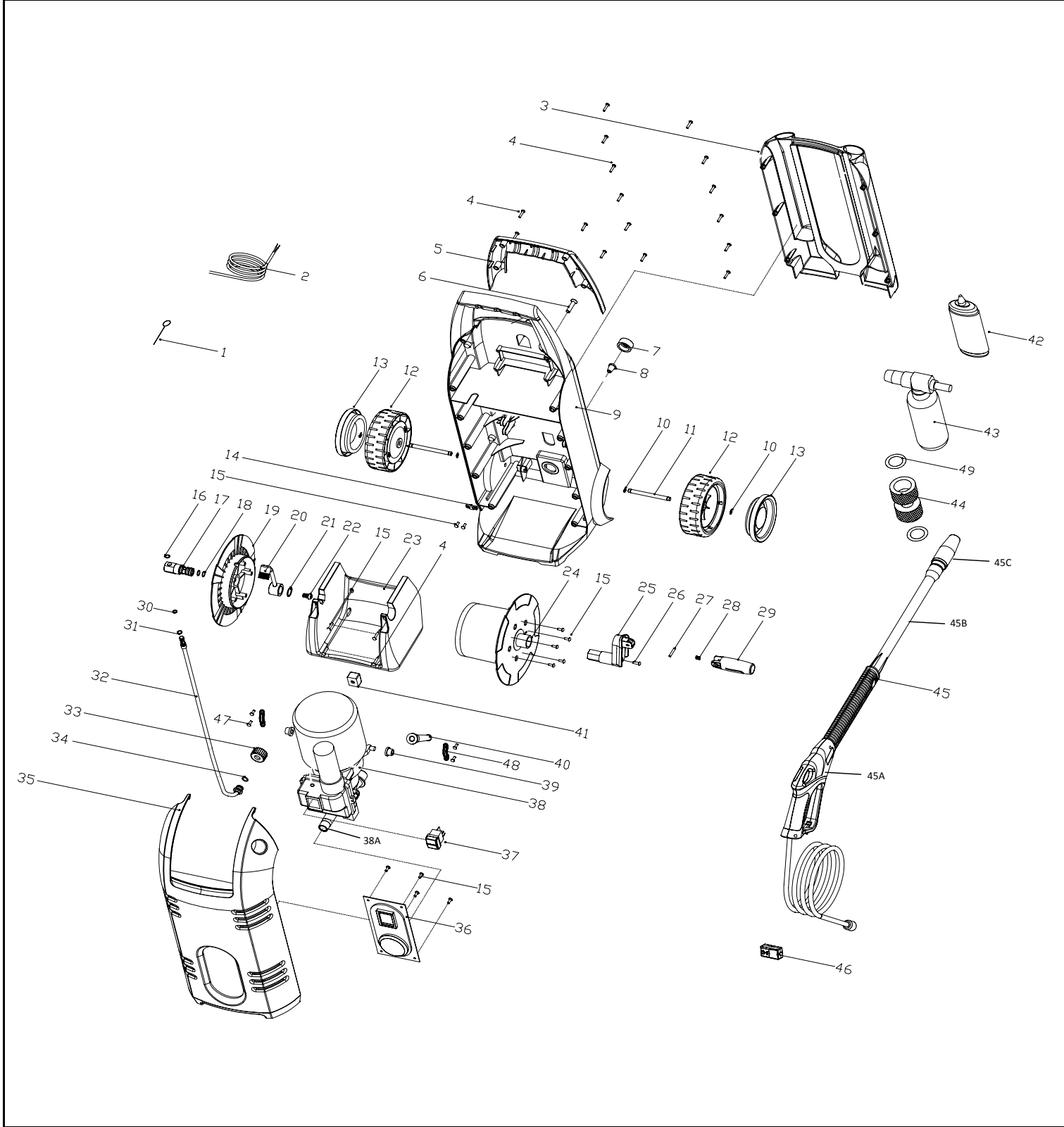




SERVICE SPARE PARTS LIST

| SPECIFY MODEL NO. WHEN ORDERING PARTS | | DATE | REVISED DATE |
|---------------------------------------|--------|------------|--------------|
| High Pressure Washer | | 11/23/2007 | 11/23/2007 |
| MODEL NO. | FH180A | | V2 |



**High Pressure Washer
FH180A**

PARTS LIST

8/11/2009

| No. | Parts No. | Description | Q | P Code |
|-----|-------------|---------------------|----|--------|
| 1 | 6197-160A02 | CLEANING PROBE | 1 | 140 |
| 2 | 7011-170A01 | POWER CORD | 1 | 140 |
| 3 | 7123-170A01 | TOOL STORAGE | 1 | 140 |
| 4 | 6SDABB04-20 | SCREW | 18 | 140 |
| 5 | 6068-160A01 | HANDLE | 1 | 140 |
| 6 | 7SVAB-08-35 | SCREW | 1 | 140 |
| 7 | 7154-140A04 | INLET COVER | 1 | 140 |
| 8 | 7183-140A02 | FILTER | 1 | 140 |
| 9 | 7003-170A02 | HOUSING, AFTER | 1 | 140 |
| 10 | 6080-160A01 | SPRING | 4 | 140 |
| 11 | 7177-170A01 | WHEEL SHAFT | 2 | 140 |
| 12 | 6137-160A01 | WHEEL | 2 | 140 |
| 13 | 6017-BQ0103 | WHEEL COVER | 2 | 140 |
| 14 | 7043-140A01 | CORD CLAMP | 1 | 140 |
| 15 | 6SDABB04-12 | SCREW | 13 | 140 |
| 16 | 6CC-08 | C RING | 1 | 140 |
| 17 | 7081-170A01 | CONNECTOR | 1 | 140 |
| 18 | 6076-160A11 | RUBBER PLUG | 2 | 140 |
| 19 | 6122-160A02 | TURNTABLE (L) | 1 | 140 |
| 20 | 7228-170C01 | JOINT ASS'Y | 1 | 140 |
| 21 | 6CC-18 | C RING | 1 | 140 |
| 22 | 6SDACM08-13 | SCRE | 1 | 140 |
| 23 | 6072-160A01 | BASE | 1 | 140 |
| 24 | 6122-160A01 | TURNTABLE (R) | 1 | 140 |
| 25 | 6190-160A01 | ROCKER-BAR | 1 | 140 |
| 26 | 6SDABB05-15 | SCREW | 1 | 140 |
| 27 | 6PC04-25 | PIN | 1 | 140 |
| 28 | 6024-160A01 | SPRING | 1 | 140 |
| 29 | 6196-160A01 | HANDLE | 1 | 140 |
| 30 | 6076-160A05 | RUBBER PLUG | 1 | 140 |
| 31 | 6076-160A04 | RUBBER PLUG | 1 | 140 |
| 32 | 7228-170C02 | JOINT ASS'Y | 1 | 140 |
| 33 | 6105-160A01 | COVER, OUTPUT WATER | 1 | 140 |
| 34 | 7076-170A01 | RUBBER PLUG | 1 | 140 |

| | | | | |
|------------|--------------------|---|----------|------------|
| 35 | 7003-170A01 | HOUSING, FRONT | 1 | 140 |
| 36 | 6043-160A04 | FACEPLATE | 1 | 140 |
| 37 | 7022-140A04 | SWITCH | 1 | 140 |
| 38 | 7228-180A03 | MOTOR & HIGH PRESSURE PUMP ASS'Y | 1 | 140 |
| 38A | 7200-140A02 | WATER INLET | 1 | 140 |
| 39 | 7014-170A01 | STAND, MOTOR | 2 | 2 |
| 40 | 6059-855001 | CORD GUARD | 1 | 1 |
| 41 | 6014-160A01 | PLASTIC SPACER | 1 | 1 |
| 42 | 7229-AT1401 | GLUE | 1 | 1 |
| 43 | 7228-140C03 | WASHING JAR ASS'Y | 1 | 1 |
| 44 | 7154-180A01 | COUPLER | 1 | 1 |
| 45 | 7228-180B01 | WASH MACHINE HAND ASS'Y, 6M | 1 | 1 |
| 45A | 7196-180B01 | HOSE TTIGGER ASS'Y | 1 | 1 |
| 45B | 7200-140D55 | WAND | 1 | 1 |
| 45C | 7200-140D53 | NOZZLE | 1 | 1 |
| 46 | 7247-180A02 | CIRCUIT-BREAKER | 1 | 1 |
| 47 | 7SLABB04-16 | SCREW | 4 | 4 |
| 48 | 7158-180001 | PLATE | 2 | 2 |
| 49 | 7076-180001 | WASHER | 2 | 2 |