



***Performance Under Pressure***

PARTS LIST FOR  
***CW-3504-4MGH/V***  
***CW-3504-4MGR***  
(AFTER SERIAL #10375000)

Engine Oil Grade:

Honda/ Subaru:

SAE10W-30

Vanguard:

Above 40°F=SAE 30

Below 40°F=SAE10W-30

Engine Oil Capacity:

Honda:

37 oz.

Subaru:

40.5 oz.

Vangurad:

50 oz.

Pump Oil Grade:

Mi-T-M Pump Oil #AW-4085-0016

Pump Oil Capacity:

40.6 oz.

Nozzle Size:

4.0

This Parts Listing has been compiled for your benefit. You can be assured your Mi-T-M Cold Water Pressure Washer was constructed and designed with quality and performance in mind using over 25 years experience in the pressure washer business. Each component has been rigorously tested to insure the highest level of acceptance.

The contents of this Parts Listing are based on the latest product information available at the time of publication. Mi-T-M reserves the right to make changes in price, color, materials, equipment, specifications or models at any time without notice.

### **WARNING**

THIS IS A PROFESSIONAL HIGH PRESSURE, COLD WATER PRESSURE WASHER. CAUTION SHOULD BE OBSERVED WHEN USING OR REPAIRING THIS UNIT! READ AND FOLLOW THE SAFETY WARNINGS LISTED BELOW BEFORE ATTEMPTING ANY REPAIRS ON THIS PRESSURE WASHER!

### **SAFETY WARNINGS**

1. NEVER alter or modify the equipment. Be sure any accessory items and system components being used will withstand the pressure developed. Use only genuine Mi-T-M parts for repair of your pressure washer. Failure to do so can cause hazardous operating conditions and will VOID warranty.
2. NEVER make adjustments on machinery while the unit is connected to the engine without first removing the ignition cables from the spark plugs. Turning over the machinery by hand during adjustment or cleaning might start the machinery, causing serious injury to the operator.
3. Know how to stop and bleed pressures quickly. Be thoroughly familiar with controls.
4. Before servicing the unit, turn unit off, relieve the water pressure and allow the unit to cool down. Do not make repairs while the unit is running. Service in a clean, dry, flat area.
5. After testing the machine, DO NOT leave the pressurized unit unattended. Shut off the unit and release trapped pressure before leaving.

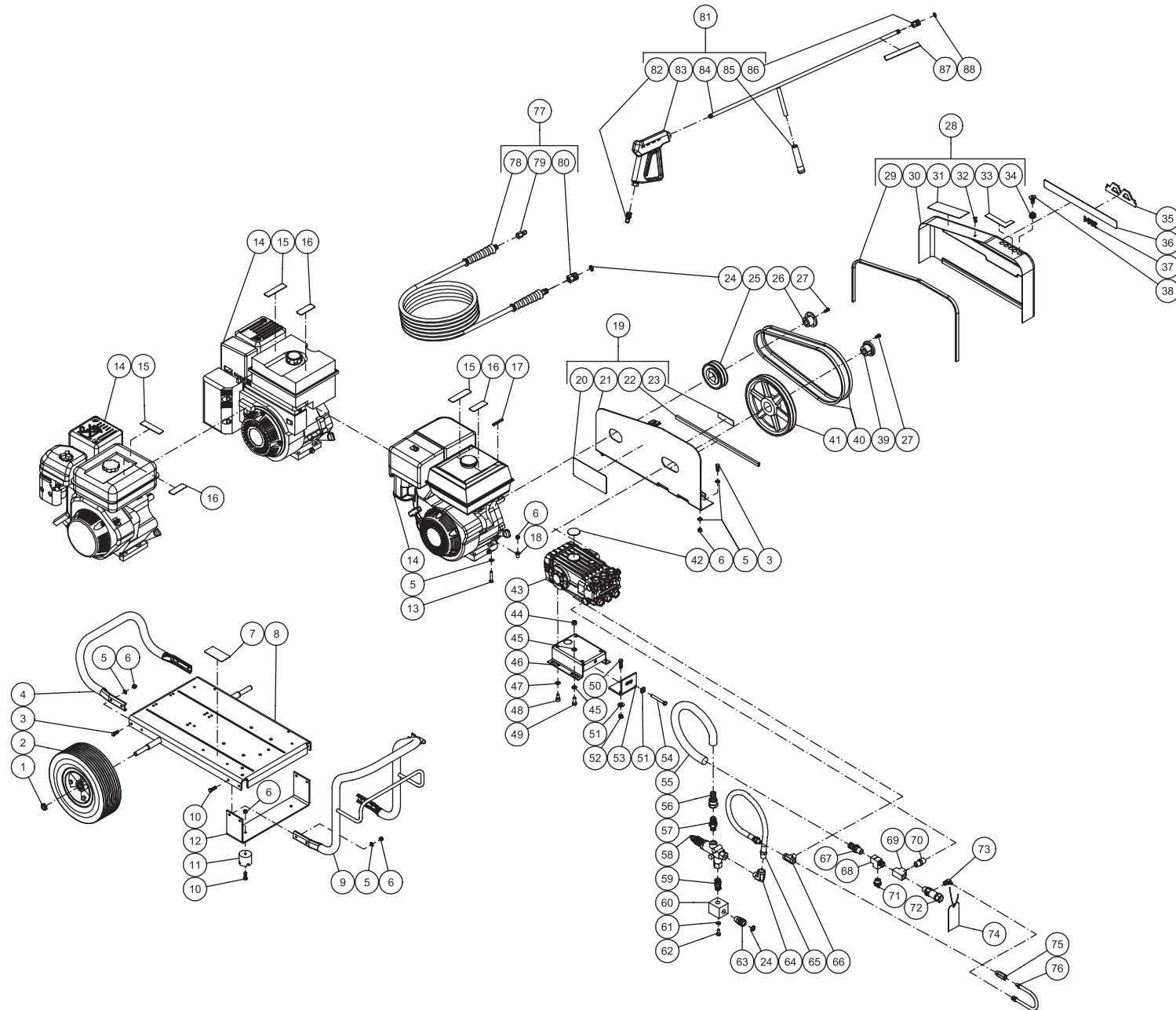
### **Table of Contents**

<b>SPECIFICATIONS.....</b>	<b>3</b>
<b>FRAME ASSEMBLY FOR CW-3504-4MGH/4MGV (AFTER SERIAL #10070000) &amp; CW-3504-4MGR.....</b>	<b>4</b>
<b>PUMP ASSEMBLY (3-0203) (AFTER SERIAL #10375000).....</b>	<b>6</b>
<b>UNLOADER ASSEMBLY (8-0270).....</b>	<b>8</b>
<b>GUN ASSEMBLY (16-0001) .....</b>	<b>10</b>

## SPECIFICATIONS

MODEL NUMBER	CW-3504-4MGH	CW-3504-4MGR	CW-3504-4MGV
Operating Pressure (PSI/Bar):	3500/241.3		
High Pressure Nozzle:	4.0		
Water Volume (GPM/lpm):	3.8/14.4		
Engine:	Honda	Subaru	Briggs & Stratton Vanguard
Horsepower	13.0	13.5	13.0
Engine Type	4 Stroke, Overhead Valve, Single Cylinder		
Oil Type	SAE10W-30		Above 40°F = SAE30 Below 40°F = SAE10W-30
Oil Capacity (oz./liter)	37/1.1	40.5/1.2	50/1.5
Low Oil Protection	Oil Alert™	Oil Sensor	Oil Guard™
Fuel Type	Unleaded Gasoline 86 Octane Minimum		
Fuel Capacity (gal./liter)	1.7/6.5	1.85/7.0	2.0/7.9
Starting	Recoil		
Maximum No Load RPM	3600 (+/- 100) RPM		
Pump:	Belt Driven, Oil Bath, Triplex Piston		
Oil Type	Mi-T-M Pump Oil #AW-4085-0016		
Oil Capacity (oz./liters)	40.6/1.2		
Plungers	Ceramic		
Manifold	Forged Brass		
Valves	Stainless Steel		
Unloader	Preset		
Heat Dump Valve	Relieves heated water during unloader bypass stage		
Unit Net Weight (lbs/Kg)	215.5/97.5		217.5/98.5
Unit Shipping Weight (lbs/Kg)	291/132		293/133
Unit Net Dimension (cm)	46Lx28Wx30H/117Lx71Wx76H		
Unit Shipping Dimension (cm)	48.5Lx30.5Wx35.5H/123Lx77.5Wx90H		

# FRAME ASSEMBLY FOR CW-3504-4MGH/4MGV (AFTER SERIAL #10070000) & CW-3504-4MGR

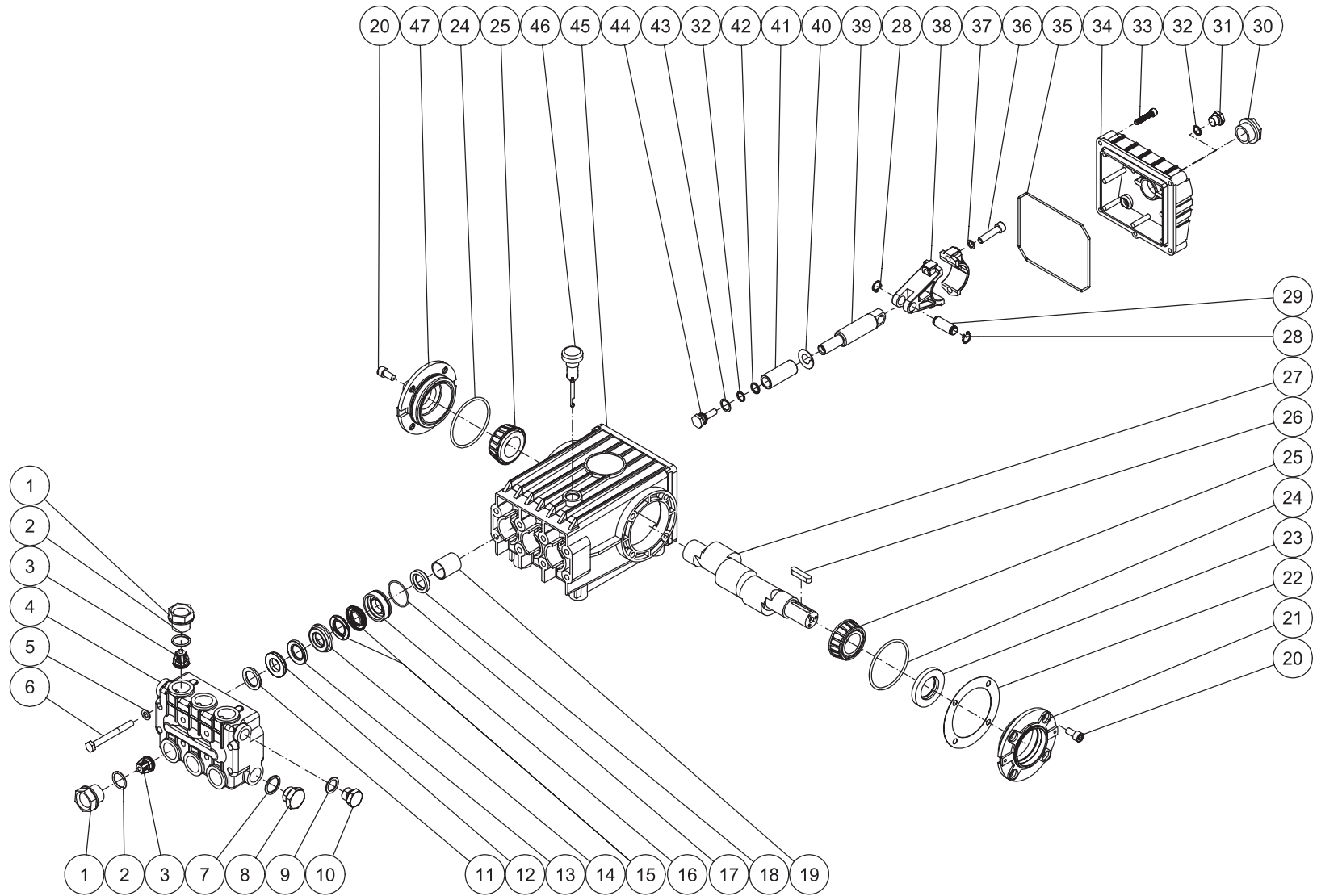


CW-3504-4MGH/R/V-092706-RSW

FRAME ASSEMBLY FOR CW-3504-4MGH/4MGV (AFTER SERIAL #10070000) & CW-3504-4MGR											
REF. #	DESCRIPTION	PART #	QTY.	REF. #	DESCRIPTION	PART #	QTY.	REF. #	DESCRIPTION	PART #	QTY.
1	Jamnut	30-0117	2	30	Beltguard Cover (See 851-0348)	N/A Sep.	1	58	Unloader	8-0270	1
2	Wheel	14-0092	2	31	Decal- Operating Instructions (See 34-9017)	N/A Sep.	1	59	Hex Nipple	24-0031	1
3	Bolt	27-0067	8	32	Fastener	33-0197	1	60	Manifold Block	51-0012	1
4	Handle-Rear	7-0175A42	1	33	Decal- Nozzles	34-0500	1	61	Washer	29-0008	2
5	Washer	28-0003	20	34	Grommet	33-0001	5	62	Bolt	27-0116	2
6	Locknut	30-0157	18	35	Decal- Mi-T-M Logo	62-0086	1	63	Quick Connect Socket	17-0029	1
7	Decal- Data Plate	N/A	1	36	Decal- Mi-T-M Stripe	34-0501	1	64	Elbow	24-0006	1
8	Baseplate	5-0078A42	1	37	Decal- Die Cut 3504	34-0034	1	65	Hose	15-0024	1
9	Handle-Front	7-0174A42	1	38	Spray Nozzle- 0004	18-0028	1	66	Tee	24-0184	1
10	Bolt	27-0068	6	-	Spray Nozzle- 1504	18-0029	1	67	Barb	23-0007	1
11	Isolator	14-0008	2	-	Spray Nozzle- 2504	18-0030	1	68	Tee	23-0124	1
12	Underbracket	13-0137A42	1	-	Spray Nozzle- 4004	18-0031	1	69	Tee	23-0043	1
13	Bolt	27-0070	4	39	Bushing	9-0017	1	70	Hex Nipple	23-0012	1
14	Engine- 13.0 HP Honda (CW-3504-4MGH)	1-0086	1	40	Belt	11-0035	2	71	Heat Dump Valve	22-0005	1
-	Engine- 13.0 HP Vanguard (CW-3504-4MGV)	1-0090	1	41	Sheave	10-0040	1	72	Filter Assembly	19-0207	1
-	Engine- 13.5 HP Subaru (CW-3504-4MGR)	1-0156	1	42	Decal- Pump ID Number	N/A	1	73	Elbow	23-0237	1
15	Decal- Caution: Allow to Cool (See 34-9017)	N/A Sep.	1	43	Pump	3-0203	1	74	Tag- Water Supply Inlet	34-0097	1
16	Decal- Warning: Muffler Hot (See 34-9017)	N/A Sep.	1	44	Locknut	30-0161	4	75	Valve	22-0242	1
17	Key	43-0078	1	45	Washer	28-0030	8	76	Hose	15-0140	1
18	Shim-Engine	33-0169	4	46	Pump Bracket	5-0101A01	1	77	High Pressure Hose Assembly (Inc. 78-80)	851-0006	1
19	Beltguard Back Assembly (Inc. 20-23)	851-0349	1	47	Washer	29-0055	4	78	Hose	15-0209	1
20	Decal- Warning/Caution (See 34-9017)	N/A Sep.	1	48	Bolt	27-8471	4	79	Quick Connect Plug	17-0006	1
21	Beltguard Back (See 851-0349)	N/A Sep.	1	49	Bolt	27-0166	4	80	Quick Connect Socket	17-0004	1
22	Edging *(Two Feet Required)	33-0020	1	50	Bolt	27-0118	2	81	Gun/Wand Assembly (Inc. 82-87)	851-0095	1
23	Decal- Warning: Beltguard Cover (See 34-9017)	N/A Sep.	1	51	Washer	28-0023	3	82	Quick Connect Plug	17-0005	1
24	O-ring	25-0123	-	52	Locknut	30-0159	2	83	Gun	16-0382	1
25	Sheave	10-0030	1	53	Brace Tightener	13-0003A01	1	84	Wand	16-0120A01	1
26	Bushing	9-0005	1	54	Bolt	27-0576	1	85	Handle Grip	7-0002	1
27	Bolt	27-0015	1	55	By-pass Hose	15-0033	1	86	Quick Connect Socket	17-0001	1
28	Beltguard Cover Assembly (Inc. 29-34)	851-0348	1	56	Hose Barb	23-0358	1	87	Decal- Warning: Risk of Injection (See 34-9017)	N/A Sep.	1
29	Edging *(Four Feet Required)	33-0020	1	57	Hex Nipple	23-0359	1	88	O-ring (Replacement Only)	25-0122	-
									Safety Decal Kit (Inc. 15, 16, 20, 23, 31, 87)	34-9017	

\*Must Order in One Foot Lengths

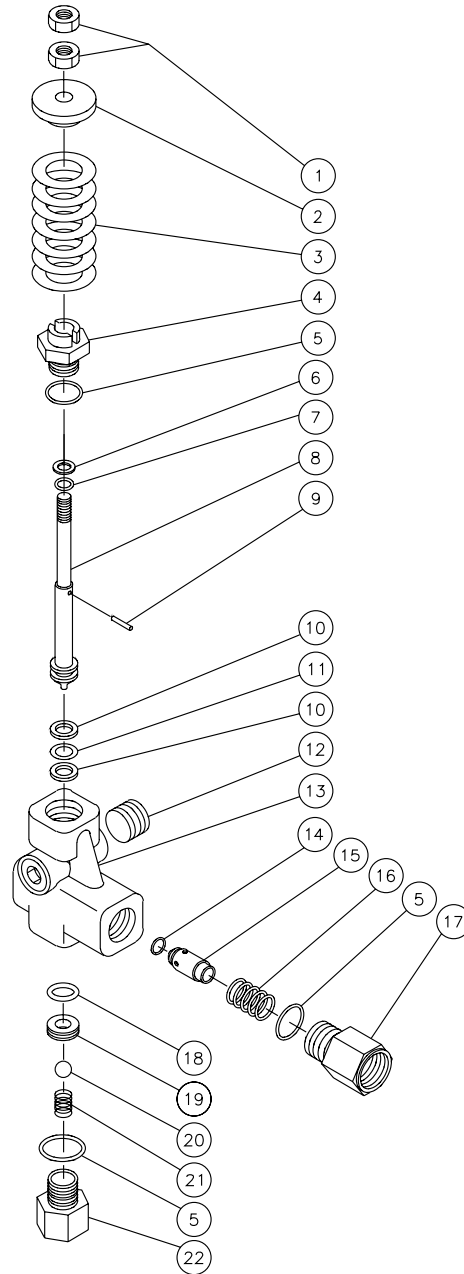
# PUMP ASSEMBLY (3-0203) (AFTER SERIAL #10375000)



3-0202\_3-0203-010408-JJT

PUMP ASSEMBLY											
REF. #	DESCRIPTION	PART #	QTY.	REF. #	DESCRIPTION	PART #	QTY.	REF. #	DESCRIPTION	PART #	QTY.
1	Valve Plug	46-0889	6	18	Oil Seal	26-0047	3	35	O-ring Cover	25-0339	1
2	O-ring	25-0012	6	19	Bushing	9-0029	3	36	Bolt	27-8435	6
3	Valve Assembly (See 70-0009)	N/A Sep.	6	20	Bolt	27-8431	8	37	Lockwasher	29-0154	6
4	Manifold	46-0890	1	21	Crankcase Open Cover	46-0296	1	38	Connecting Rod	46-0051	3
5	Flatwasher	28-1039	8	22	Shim	46-0113	1	39	Piston Rod	46-0056	3
6	Bolt	27-8185	8	23	Oil Seal	26-0049	1	40	Washer	46-0146	3
7	Washer	28-1038	2	24	O-ring	25-0013	2	41	Plunger	46-0052	3
8	Plug	39-0019	2	25	Bearing	48-0012	2	42	Back-up Ring	46-0109	3
9	Washer	28-1002	2	26	Key	43-0048	1	43	Washer	28-0400	3
10	Plug	39-0018	2	27	Crankshaft	N/A	1	44	Bolt	46-0069	3
11	O-ring (See 70-0030)	N/A Sep.	3	28	Retaining Ring	46-0103	6	45	Crankcase	46-0047	1
12	V-Packing	26-0098	3	29	Connecting Rod Pin	43-0032	3	46	Oil Dip Stick	46-0144	1
13	Ring	25-0207	3	30	Oil Level Indicator	46-0114	1	47	Crankcase Cover	46-0336	1
14	High Pressure Intermediate Seal Retainer	46-0659	3	31	Plug	39-0017	1		Valve Kit (6 each 3)	70-0009	
15	Low Pressure Seal	N/A Sep.	3	32	O-ring	25-0014	4		Head Ring Kit (1 each 11)	70-0030	
16	Low Pressure Seal Retainer	46-0057	3	33	Bolt	27-8404	5		V-Packing Kit (3 each 12, 13, 15)	70-0147	
17	O-ring	25-0015	3	34	Crankcase Cover	46-0295	1		Intermediate Retainer Kit (3 each 13, 14)	70-0148	
									V-Packing Assembly (3 each 11-17)	852-0122	

# UNLOADER ASSEMBLY (8-0270)

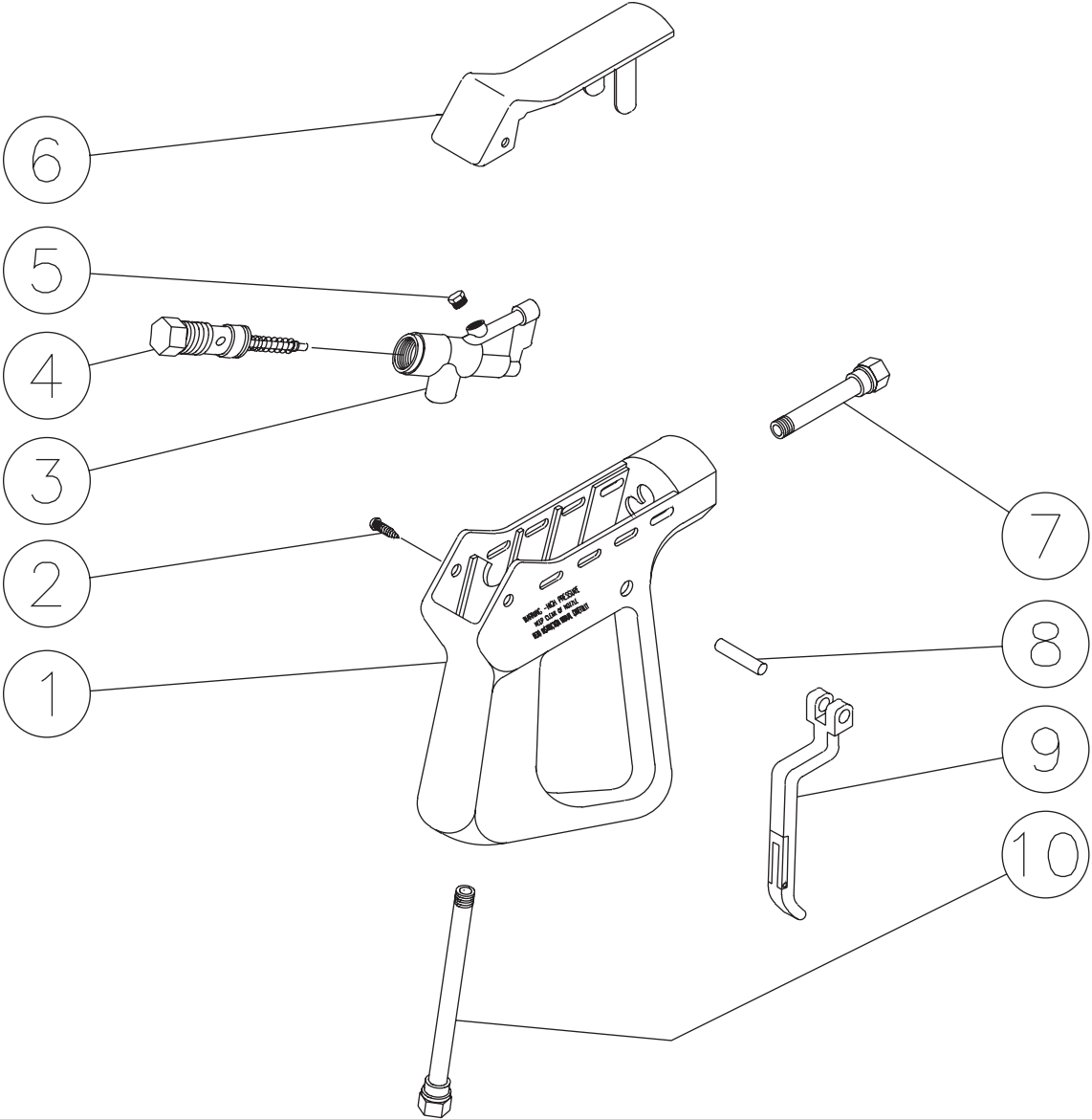


OMGEN043-083094-BAR



<b>UNLOADER ASSEMBLY (8-0270)</b>			
<b>REF. #</b>	<b>DESCRIPTION</b>	<b>PART #</b>	<b>QTY.</b>
1	Hex Nut	30-7203	2
2	Spring Guide	8-0278	1
3	Spring	49-0111	1
4	Piston Housing	8-0279	1
5	O-ring	25-0189	3
6	Back-up Ring	8-0277	1
7	O-ring	25-0192	1
8	Piston	8-0280	1
9	Pin	43-0059	1
10	Back-up Ring	8-0276	2
11	O-ring	25-0191	1
12	Plug	39-0055	2
13	Valve Housing	8-0275	1
14	O-ring	25-0193	1
15	Check Valve	22-0127	1
16	Spring	49-0058	1
17	Outlet Connection	8-0271	1
18	O-ring	25-0190	1
19	Seat	8-0272	1
20	Ball	8-0273	1
21	Spring	49-0059	1
22	Inlet Connection	8-0274	1
	Unloader Kit (5-7, 10, 11, 14, 18-20)	70-0107	1

**GUN ASSEMBLY (16-0001)**



16-0001-110399-RD

<b>GUN ASSEMBLY (16-0001)</b>			
<b>REF. #</b>	<b>DESCRIPTION</b>	<b>PART #</b>	<b>QTY.</b>
1	Plastic Housing	16-0008	1
2	Screw	27-3230	2
3	Brass Housing	16-0012	1
4	Gun Repair Kit	70-0055	1
5	Brass Plug	39-0024	1
6	Plastic Cover	16-0009	1
7	Pipe Assembly	16-0013	1
8	Trigger Pin	16-0063	1
9	Trigger/Safety Lock-off	16-0010	1
10	Pipe Assembly- Inlet	16-0016	1
	Complete Gun Assembly	16-0001	1

Manufactured by Mi-T-M  
8650 Enterprise Drive, Peosta IA 52068  
563-556-7484/ Fax 563-556-1235