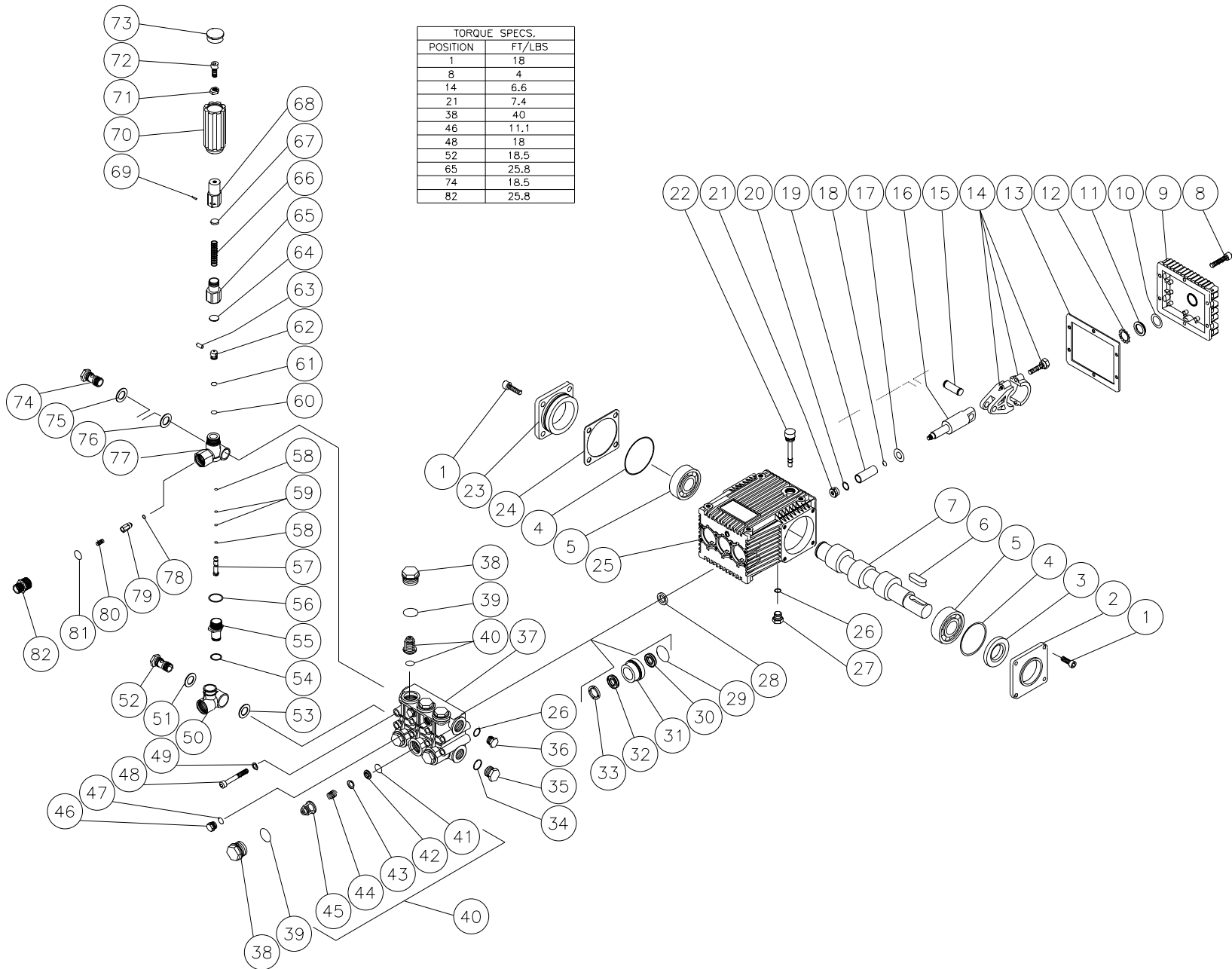


# PUMP ASSEMBLY (3-0176)

TORQUE SPECS.	
POSITION	FT/LBS
1	18
8	4
14	6.6
21	7.4
38	40
46	11.1
48	18
52	18.5
65	25.8
74	18.5
82	25.8



OMPMP055/051498/RD

PUMP ASSEMBLY (3-0176)											
REF. #	DESCRIPTION	PART #	QTY.	REF. #	DESCRIPTION	PART #	QTY.	REF. #	DESCRIPTION	PART #	QTY.
1	Bolt	27-8884	8	30	Low Pressure Seal (See 70-0177)	N/A Sep.	3	60	O-ring (See 70-0180)	N/A Sep.	1
2	Shaft Cover	46-0691	1	31	Packing Retainer	46-0708	3	61	Back-up Ring (See 70-0180)	N/A Sep.	1
3	Oil Seal	26-0188	1	32	V-Packing (See 70-0177)	N/A Sep.	3	62	Poppet	8-0443	1
4	O-Ring	25-0380	2	33	Support Ring (See 70-0178)	N/A Sep.	3	63	Pin	8-0444	1
5	Roller Bearing	48-0061	2	34	O-ring	25-0372	1	64	Spring Button	8-0445	1
6	Key	43-0091	1	35	Plug	39-0088	1	65	Guide Spring	8-0474	1
7	Crankshaft	46-0692	1	36	Plug	39-0086	1	66	Spring	49-0132	1
8	Bolt	27-8885	6	37	Manifold	46-0711	1	67	Spring Button	8-0475	1
9	Crankcase Cover	46-0693	1	38	Valve Cap	39-0095	6	68	Adjustment Barrel	8-0476	1
10	O-ring	25-0370	1	39	O-ring	25-0160	6	69	Pin	8-0477	1
11	Oil Sight Glass	46-0670	1	40	Single Valve Assy. (Inc. 41-45) (See 70-0179)	N/A Sep.	6	67	Unloader Knob	7-0141	1
12	Retainer	46-0671	1	41	O-ring	25-0386	6	68	Nut	30-3025	1
13	Gasket	26-0189	1	42	Valve Seat (See 70-0179)	N/A Sep.	6	72	Bolt	27-8433	1
14	Connecting Rod-Aluminum	46-0696	3	43	Valve Plate (See 70-0179)	N/A Sep.	6	73	Cap	7-0142	1
15	Piston Pin	46-0698	3	44	Valve Spring (See 70-0179)	N/A Sep.	6	74	Adaptor	8-0448	1
16	Plunger Rod	46-0699	3	45	Valve Cage (See 70-0179)	N/A Sep.	6	75	Washer	8-0449	1
17	Slinger Washer	46-0700	3	46	Plug	39-0096	2	76	Washer	8-0450	1
18	O-ring	25-0382	6	47	O-ring	25-0387	2	77	Unloader Body	8-0451	1
19	Ceramic Piston	46-0701	3	48	Bolt	27-8440	8	78	O-ring	25-0391	1
20	Washer	26-0191	3	49	Lockwasher	29-0154	8	79	Check Valve	8-0454	1
21	Nut	30-6020	3	50	Inlet Bypass Adapter	8-0437	1	80	Spring	49-0123	1
22	Oil Dipstick	39-0090	1	51	Washer	8-0440	1	81	O-ring	25-0372	1
23	Bearing Cap	46-0703	1	52	Adaptor	8-0438	1	82	Adaptor Nipple	24-0159	1
24	Shim 0.1mm (Quantity varies 1-3)	46-0704	--	53	Washer	8-0439	1		High Pressure Seal Kit (Inc. 3 each 29, 30, 32)	70-0177	
	Shim 0.2mm (Quantity varies 1-3)	46-0705	--	54	O-ring (See 70-0180)	N/A Sep.	1		Support Ring Kit (Includes 3 each 33)	70-0178	
25	Crankcase	46-0706	1	55	Nipple	8-0441	1		Valve Kit (Includes 6 each 41-45)	70-0179	
26	O-ring	25-0325	2	56	O-ring (See 70-0180)	N/A Sep.	1		Unloader Repair Kit (Inc. 54, 56,58-61, 78)	70-0180	
27	Plug	39-0086	1	57	Piston	8-0442	1		Unloader Complete (50-80)	8-0456	
28	Oil Seal	26-0190	3	58	Back-up Ring (See 70-0180)	N/A Sep.	2				
29	O-ring	25-0384	3	59	O-ring	25-0371	5				