



Mi-T-M® CORPORATION ■ Peosta, IA 52068

ILLUSTRATED PARTS LISTING

**FOR PRESSURE WASHER MODEL(S):
CW-2405-0MGB, CW-2405-0MGH, CW-2405-0MGR**

(SERIAL #177952 -)

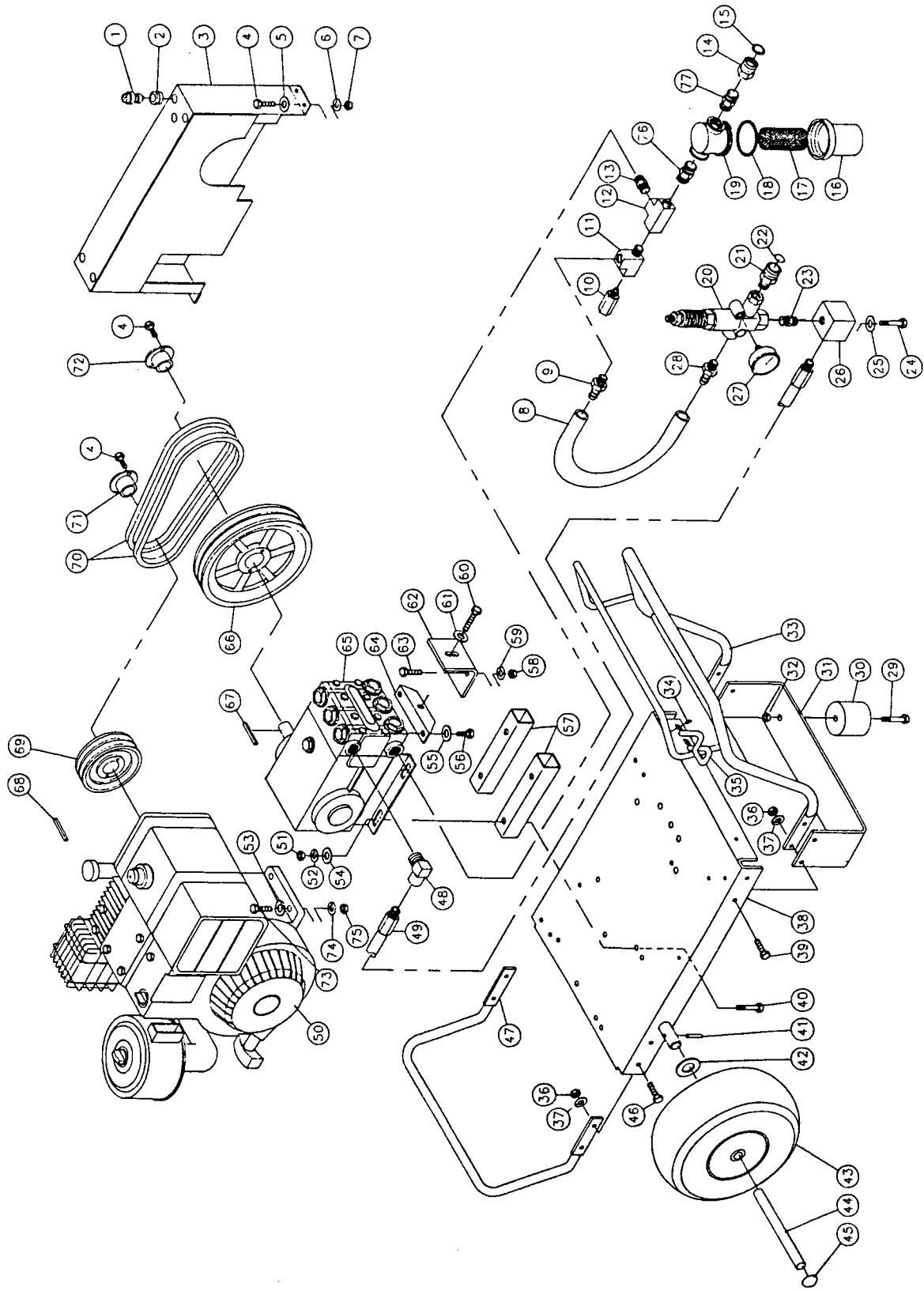
**CW-2405-0MGB, CW-2405-0MGH &
CW-2405-0MGR PARTS LISTING KEY**

PUMP PART#:	3-0079
GEAR REDUCTION PART#:	NA
UNLOADER PART #:	8-0032
GUN/WAND ASSEMBLY PART #:	851-0095
GUN PART #:	16-0001

SPECIFICATIONS:

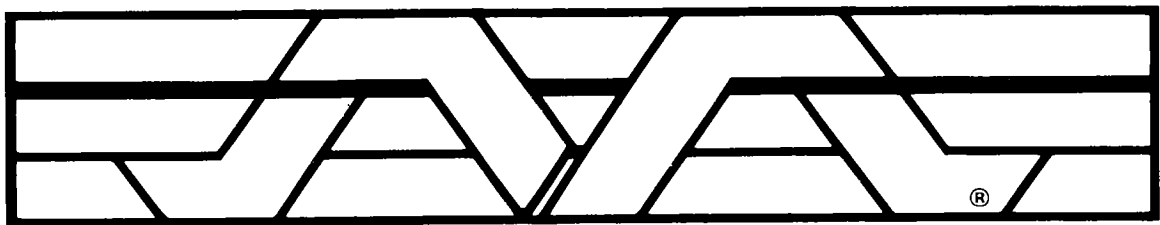
MAXIMUM PRESSURE 2400 PSI
 MAXIMUM FLOW 4.6 GPM
 NOZZLE SIZE #6
 PUMP OIL CAPACITY 40.6 OZ.
 PUMP OIL GRADE SAE #30W NON-DET
 ENGINE OIL CAPACITY 48 OZ.
 ENGINE OIL GRADE #30-SE-SC-SF-SD
 FUEL TANK CAPACITY 192 OZ.
 RECOMMENDED FUEL LEAD FREE

CW-2405-0MGB, CW-2405-0MGGH & CW-2405-0MGR ASSEMBLY EXPLODED VIEW AS OF SERIAL #177952



CW-2405-0MGB, CW-2405-0MGH & CW-2405-0MGR ASSEMBLY PARTS LISTING AS OF SERIAL #177952

Ref. No.	Description	Part No.	Qty.	Ref. No.	Description	Part No.	Qty.
1	Nozzle, 0006	18-0013	1	38	Base plate (CW-2405-0MGR)	5-0007	1
1	Nozzle, 1506	18-0014	1	39	Bolt	27-0068	4
1	Nozzle, 2506	18-0043	1	40	Bolt	27-0173	4
1	Nozzle, 4006	18-0044	1	41	Roll pin	43-0002	1
2	Grommet	33-0001	5	42	Flatwasher	28-0008	3
3	Belt guard	6-0001	1	43	Wheel	14-0006	2
4	Bolt	27-0015	4	44	Axle (CW-2405-0MGB, 0MGR)	20-0008	1
5	Flatwasher	28-0002	4	44	Axle (CW-2405-0MGH)	20-0007	1
6	Lockwasher	29-0006	4	45	Hub cap	33-0018	2
7	Hex nut	30-0002	4	46	Bolt	27-0067	4
8	Bypass hose	15-0035	1	47	Rear handle	7-0104	1
9	Hose barb locking	23-0007	1	48	Elbow	24-0105	1
10	Heat dump valve	22-0005	1	49	Hose	15-0024	1
11	Street tee	23-0124	1	50	Engine (CW-2405-0MGB)	1-0005	1
12	Tee	23-0043	1	50	Engine (CW-2405-0MGH)	1-0039	1
13	Hex nipple	23-0012	1	50	Engine (CW-2405-0MGR)	1-0011	1
14	Garden hose swivel (CW-2405-0MGB)	23-0021	1	51	Hex nut	30-0008	4
14	Garden hose swivel (CW-2405-0MGH, 0MGR)	26-0001	1	52	Lockwasher	29-0009	4
15	Garden hose gasket	19-0060	1	53	Flatwasher (CW-2405-0MGB, 0MGR)	N/A	4
16	Strainer bowl (CW-2405-0MGB)	19-0025	1	53	Flatwasher (CW-2405-0MGH)	28-0005	4
16	Strainer bowl (CW-2405-0MGH, 0MGR)	19-0059	1	54	Flatwasher	28-0005	4
17	Strainer steel screen (CW-2405-0MGB)	19-0015	1	55	Lockwasher	29-0055	2
17	Strainer steel screen (CW-2405-0MGH, 0MGR)	26-0160	1	56	Bolt	27-8471	2
18	Strainer gasket (CW-2405-0MGB)	26-0072	1	57	Pump mounts	13-0028	2
18	Strainer gasket (CW-2405-0MGH, 0MGR)	19-0058	1	58	Hex nut	30-0006	2
19	Strainer cap (CW-2405-0MGB)	19-0058	1	59	Lockwasher	29-0008	2
19	Strainer cap (CW-2405-0MGH, 0MGR)	19-0024	1	60	Bolt	27-0576	1
19	Strainer Assembly Complete (Includes items 14-19 & 77)			61	Flatwasher	28-0023	1
	(CW-2405-0MGB)	19-0057		62	Tightener brace angle	13-0003	1
	Strainer Assembly Complete (Includes items 16-19)			63	Bolt	27-0117	2
	(CW-2405-0MGH, 0MGR)	19-0004		64	Pump tightener angle with nut	13-0050	1
20	Unloader Valve Assembly Complete	8-0032	1	65	Pump	3-0079	1
21	Quick connect socket	17-0029	1	66	Pump sheave	10-0040	1
22	O-ring	25-0123	1	67	Key	43-0048	1
23	Hex nipple	24-0031	1	68	Key	43-0039	1
24	Bolt	27-0116	2	69	Engine sheave	10-0025	1
25	Lockwasher	29-0008	2	70	Belt (CW-2405-0MGB)	11-0011	2
26	Manifold block	51-0012	1	70	Belt (CW-2405-0MGH, 0MGR)	11-0035	2
27	Pressure gauge	22-0107	1	71	Engine bushing (CW-2405-0MGB, 0MGH)	9-0005	1
28	Hose barb locking	23-0007	1	71	Engine bushing (CW-2405-0MGR)	9-0010	1
29	Bolt	27-0068	2	72	Pump bushing	9-0017	1
30	Isolator	14-0008	2	73	Bolt (CW-2405-0MGB)	27-0070	4
31	Underbracket	13-0042	1	73	Bolt (CW-2405-0MGH, 0MGR)	27-0170	4
32	Hex nut locking	30-0157	2	74	Lockwasher (CW-2405-0MGB)	29-0008	4
33	Front handle	7-0101	1	74	Lockwasher (CW-2405-0MGH, 0MGR)	29-0009	4
34	Hex washer head screw	27-3062	4	75	Hex nut (CW-2405-0MGB)	30-0006	4
35	Wand holder	62-0085	2	75	Hex nut (CW-2405-0MGH, 0MGR)	30-0008	4
36	Hex nut	30-0157	8	76	Hex nipple (CW-2405-0MGB)	23-0012	1
37	Lockwasher	28-0003	8	76	Hex nipple (CW-2405-0MGH, 0MGR)	23-0082	1
38	Base plate (CW-2405-0MGB)	5-0078	1	77	Hex nipple (CW-2405-0MGB)	N/A	1
38	Base plate (CW-2405-0MGH)	5-0005	1	77	Hex nipple (CW-2405-0MGH, 0MGR)	23-0026	1



Mi-T-M[®] CORPORATION